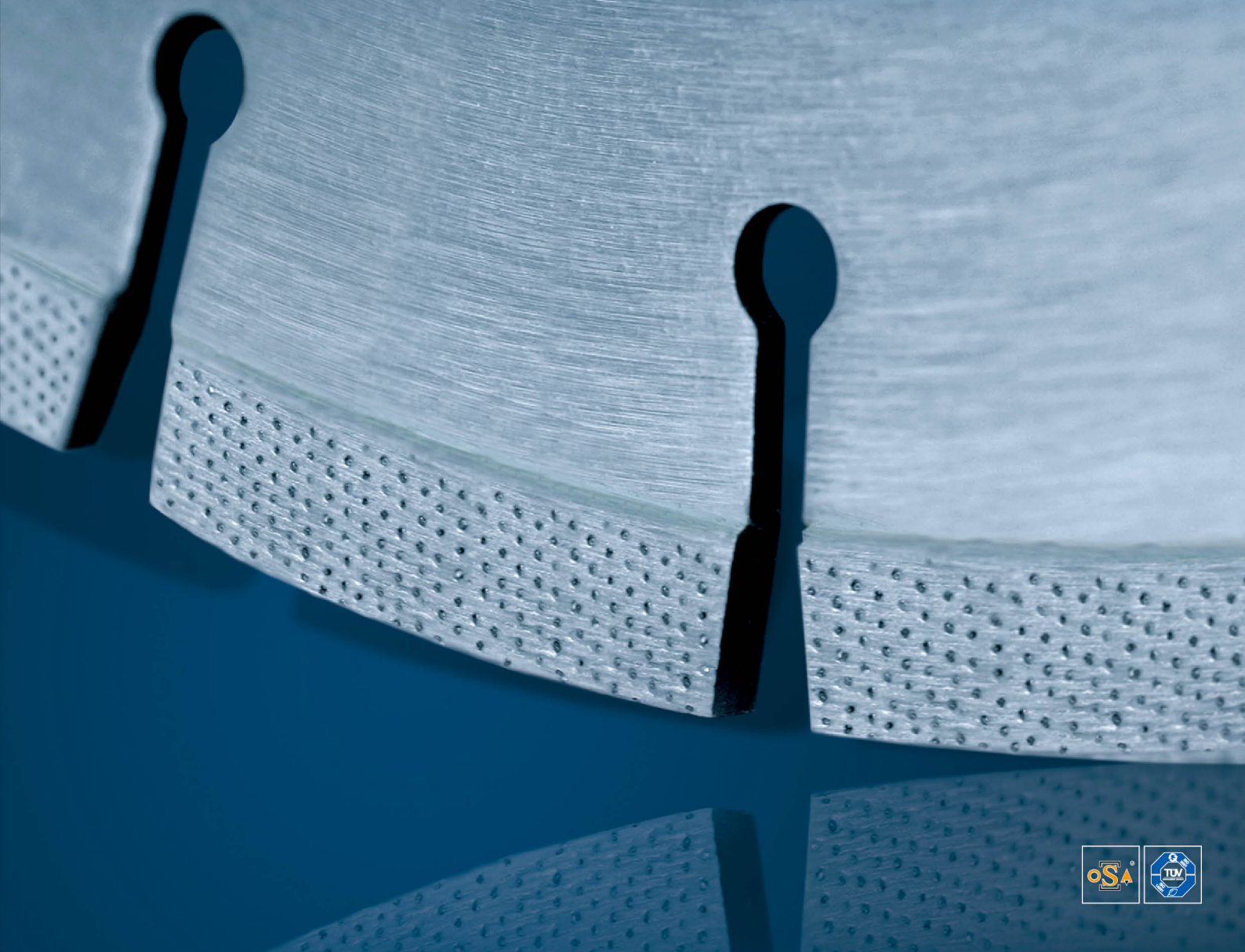


*New  
edition* **R**  
**ZENESIS**®

WORLD'S MOST ADVANCED  
PATTERNED DIAMOND TECHNOLOGY





# ZENESIS<sup>®</sup> TECHNOLOGY

ZENESIS<sup>®</sup> is a platform technology that brings to life dramatic improvement in diamond tool performance by its ability to custom design and mass produce optimal patterns of diamonds based on application needs.

## ZENESIS<sup>®</sup> *New edition R*

A New *R*evolutionary Platform of Diamond Tools

### NEW PLATFORM *R*

- Ideally-analyzed diamond positions create the new platform *R* of pattern structures.
- Remarkable progress in the technique of multi-complex layers from previous version.

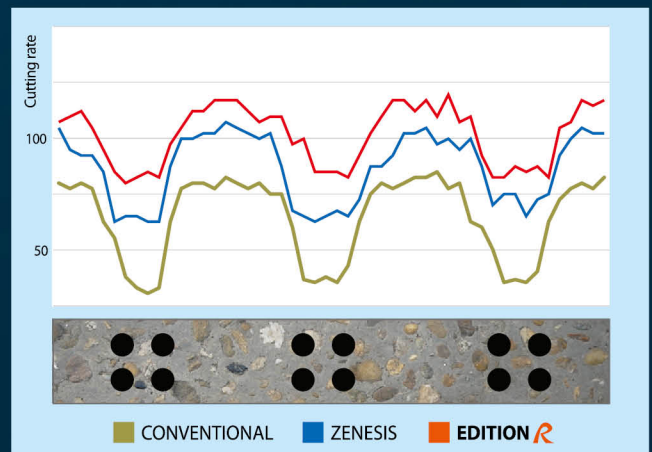
### DESIGNED PERFORMANCE

- Matching platform *R* with applications maximizes sawing performance for specific uses.
- Consistent wear behavior in even extreme sawing conditions.

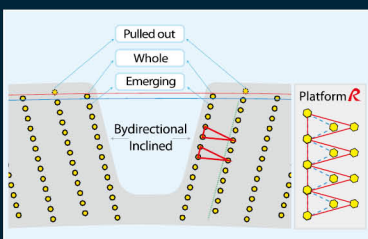
### PRECISION MANUFACTURING

- Most sophisticated manufacturing process enhances the product's stability and its perfection.
- Highly-utilized production process allows greater flexibility and productivity.

### CUTTING PERFORMANCE

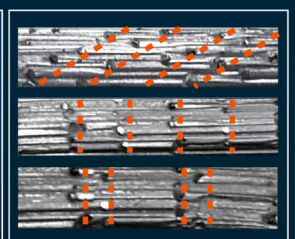
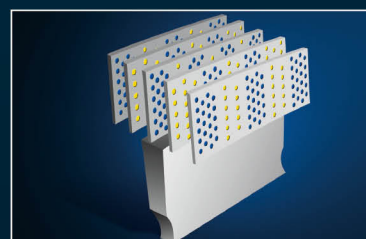


## ZENESIS<sup>®</sup> *New edition R*



### ADVANCED ISOSCELES TRIANGULAR STRUCTURE

- **Design :** Advanced isosceles triangular structure.
- **Concept:** Platform *R* that consists of an advanced triangular structure is designed to control a time of diamond exposure for unlimited innovation.
- **Effect :** Trouble-free sawing and drilling on even the most difficult jobs.



### MULTI - DESIGNED LAYERS

- **Design :** Multi-designed layers.
- **Concept:** Multi-designed layers are patterned to control a portion of diamond exposure and number of diamond on the cut for stable wear and optimized sawing performance.
- **Effect :** Consistent and stable performance on various applications.

## FLOOR SAW BLADE



CODE	ZC-R20	ZC-R35	ZC-R50	ZC-R60
MACHINE	20~30 (HP)	35~48 (HP)	50~60 (HP)	65 (HP)
Application	F	Hard aggregate and high strength concrete		
	G	Medium to hard aggregate and moderate strength concrete		
	L	Soft aggregate and low strength concrete		

## WALL SAW BLADE



CODE	ZW-R10	ZW-R20	ZW-R30
MACHINE	10~15 (kw)	15~25 (kw)	25~ (kw)
Application	F	Heavily reinforced with hard aggregate	
	G	Moderately reinforced with medium aggregate	
	L	Lightly reinforced with soft aggregate	

## HAND-HELD SAW BLADE



HANDHELD	RING SAW	APPLICATION
ZH-R10	ZHR-R10	Reinforced concrete, veay hard materials
ZH-R20	ZHR-R20	Wide range of medium hard building materials
ZH-R30	ZHR-R30	Lime aggrecte, soft materials

## CORE BIT



CODE	ZC-R10	ZC-R20	ZC-R30
MACHINE	2~2.5 (kw)	2.5~3.3 (kw)	3.5~ (kw)
Application	Hard materials	R20	R30
	Medium materials		
	Soft materials		



Use approved safety guards and protective goggles.



## EHWA DIAMOND IND. CO. LTD.

[www.zenesistechnology.com](http://www.zenesistechnology.com) / [salesinfo@ehwadia.co.kr](mailto:salesinfo@ehwadia.co.kr)

374, Nambudae-ro, Osan-city, Gyeonggi-do, Korea (18145)

TEL. (82-31) 370-9300 | FAX. (82-31) 370-9191

