

Synthetic Diamond Powders for Stone, Mining & Construction ISD Series / IPD Series

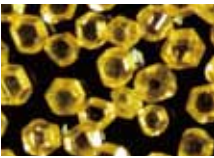
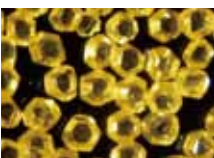
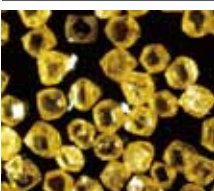
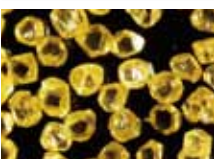
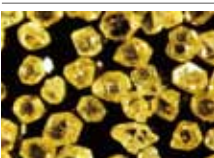
ISD Series / IPD Series

Sales Network

KOREA	ILJIN Head Office	TEL +82-2-3777-8413	FAX +82-2-3777-8491	E-mail dia@iljin.co.kr
	6F, 15, Magokjungang 14-ro, Gangseo-gu, Seoul, 07789, Korea			
	Eumsung Plant	TEL +82-43-879-4752	FAX +82-43-879-4888	
	614-2, Oryu-Ri, Daeso-Myun, Eumsung-Gun, Chungcheongbuk-Do, 27659, Korea			
	Ansan Plant	TEL +82-31-689-5100	FAX +82-31-495-5659	
	690-11, Seonggok-dong, Danwon-gu, Ansan-si, Gyeonggi-do, Korea			
VIETNAM	Ha nam Plant / ILJIN DIAMOND VINA	TEL +912-065-473	E-mail dia@iljin.co.kr	
	Lot Cn03, Dong Van IV Industrial Park, Dai Cuong Commune, Kim Bang District, Hanam Province, Vietnam			
EUROPE	ILJIN EUROPE GmbH.	TEL +49-6196-88759-0	FAX +49-6196-88759-20	E-mail diaeu@iljin.co.kr
	Koelner Strasse 3, 65760 Eschborn, Germany			
JAPAN	ILJIN JAPAN Co., Ltd.	TEL +81-3-5405-2820	FAX +81-3-5405-3577	E-mail diajp@iljin.co.kr
	Hamamatsucho General B/L 7F, 2-2-15, Hamamatsu-cho, Minato-ku, Tokyo, 105-0013, Japan			
AMERICAS	ILJIN USA Inc.	TEL +1-281-448-5111	FAX +1-281-448-5114	E-mail diausa@iljin.co.kr
	15995 N. Barkers Landing Rd. #310, Houston TX 77079, USA			
CHINA	ILJIN CHINA Co., Ltd.	TEL +86-21-61268711	FAX +86-21-61268713	E-mail diachina@iljin.co.kr
	3F-C, BaoNa B/D(LP Tower), NC.25, Xianfeng ST., Minhang District, Shanghai, 201103, China			

ISD

ILJIN Synthetic Diamond

Grade	Mesh Size	Property	Application	Image
ISD-1750	25/30 ~ 60/80	Extremely high strength, thermal stability and strictly controlled shape in perfect cubo-octahedral	· Large circular saws · Multi blade saws · Drill bits · Wire saws · Milling tools	
ISD-1700	25/30 ~ 60/80	High strength, thermal stability and optimized shape for hard working condition	· Large circular saws · Multi blade saws · Drill bits · Wire saws · Milling tools	
ISD-1600	25/30 ~ 60/80	High strength, low inclusion and uniform shape distribution for hard working condition	· Large circular saws · Multi blade saws · Drill bits / · Wire saws · Milling tools · Frame saws · Electroplated tools	
ISD-1500	25/30 ~ 60/80	Mid-range of strength and shapes with low inclusions for general application	· Drill bits · Wire saws · Frame saws · Electroplated tools · Free cutting tools	
ISD-1300	25/30 ~ 60/80	Relatively friable with wider distribution of strength and shape for moderate applications	· Electroplated tools · Grinding wheels · Polishing wheels	

ISD Series will generate optimal performance in a variety of applications and available with diverse characteristics of size, shape, strength and cutting edge. Customized product development is also available upon request.

IPD

ILJIN Premium Diamond

IPD series was developed to create superior performance even under severe working condition due to its property, high strength, sharp cutting edges and micro fracturing ability.

Grade	Mesh Size	Image
IPD-SU IPD-HI	30/40 35/45 40/50	

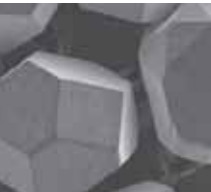
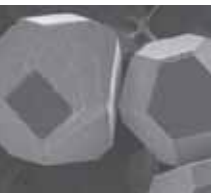
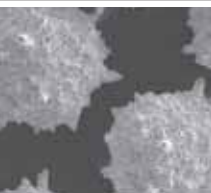
IPD series is available with Ti based coating and single mesh size upon request

Coated Diamond

Advantages of Titanium based coating

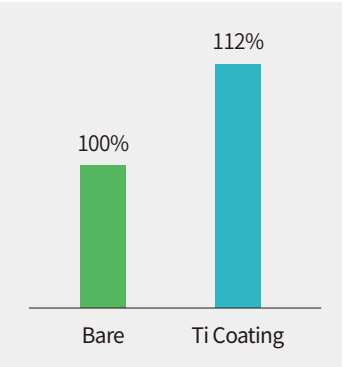
Improved diamond retention in metallurgical bond.
Diamond protection from chemical damage in aggressive sintering condition.

Available Coating

Item	Mesh Size	Property	Bond	Sintering Temperature	Image
Ti Coating	25/30 ~ 60/80	Resistant to chemical reaction and oxidation at normal sintering temp.	Cobalt Bronze Cu	750 ~ 900°C	
Tix Coating	25/30 ~ 60/80	Resistant to chemical reaction and oxidation at high sintering temperature (infiltration)	Tungsten Iron	850 ~ 1100°C	
TN Coating	25/30 ~ 60/80	Ti, Ni double layer High retention force in high content of bronze or Cu bond material	High Bronze Cu		

Retention Force

Bond system : 100%
Sintering temp. : 860°C (Hot Press)

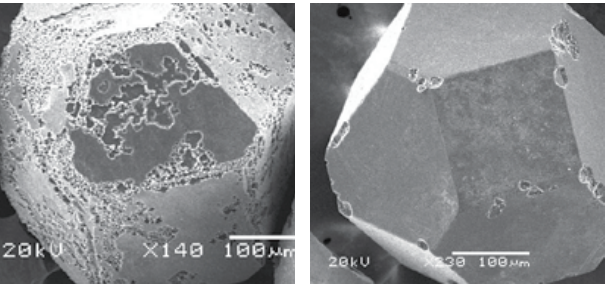


Bending force after sintering

Corrosion Resistance of Coated Diamond

Diamond surface after sintering
(Photo : reclaimed diamond)

Bond system : 40%Fe-25%Cu-35%W
Sintering temp. : 1100°C



Uncoated

Coated

New coating system is available upon request