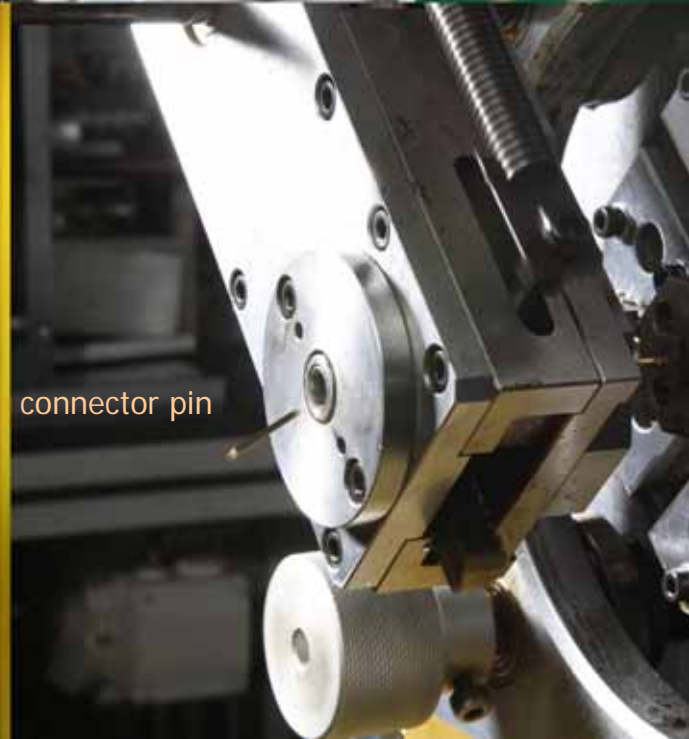


2007 BOOYOUNG PRODUCT GUIDE



회사연혁 / Company History

| | |
|-----------|--|
| 1985. 06. | 부영금속 설립 |
| 1989. 09. | 사각단면 PIN 개발 |
| 1989. 11. | 설비증설 (PIN CUTTING M/C) |
| 1990. 03. | (주)연호전자 업체등록 납품 |
| 1991. 05. | 설비증설 (자동 진공 열처리설비) |
| 1996. 05. | 회사소재지 이전(하남시 광주시) 회사명변경(부영금속/부영전자부품) |
| 1998. 03. | (주)금성정밀 한국 몰렉스 납품 |
| 2000. 06. | (주)HRS코리아 납품 |
| 2000. 11. | (주)한국성전 업체등록 납품 |
| 2003. 12. | 설비 신규증설 (PIN CUTTING M/C) |
| 2004. 07. | (주)한국단자(자동차,전자) 업체등록 납품 |
| 2005. 07. | ISO 9001 : 2000, ISO14001 : 2004 취득 |
| 2006. 04. | 설비증설 (각선 신선기) |
| 2007. 02. | 설비증설 (PIN CUTTING M/C) |
| 1985. 06. | Established Buyoung Metal |
| 1989. 09. | Developed the square cross-section PIN |
| 1989. 11. | Increased facilities (PIN CUTTING M/C) |
| 1990. 03. | Registered as a supplier for Yeonho Electronics Co., Ltd. |
| 1991. 05. | Increased facilities (auto vacuum heat treatment facilities) |
| 1996. 05. | Moved the location of the company (Gwangju City and Hanam City) Changed the company name (Booyoung Metal/Booyoung Electronic Parts) |
| 1998. 03. | Supplied for Geumseong Precision Co., Ltd. and Korea Molex |
| 2000. 11. | Supplied for HRS Korea Co., Ltd. Registered and supplied to Korea Sungjun Co., Ltd. |
| 2003. 12. | Increase of new facilities (PIN CUTTING M/C) |
| 2004. 07. | Registered and supplied to Korea Sungjun Co., Ltd. to Korea Terminals Co., Ltd. (automobile and electronics) |
| 2005. 07. | Acquired of ISO 9001 : 2000, ISO14001 : 2004 |
| 2006. 04. | Increased facilities (Wire drawing of each wire) |
| 2007. 02. | Increased facilities (PIN CUTTING M/C) |



1985
1986
1987
1988
1989
1990
1991
1992
1993
1994
1995
1996
1997
1998
1999
2000
2001
2002
2003
2004
2005
2006
2007

20년 이상 쌓은 전문지식과 기술노하우가 충분한 회사...

부영전자부품은 1985년 설립하여 전자, 전기, 통신, 산업기기 등에 사용되는 전기적 접속기기의 전 산업 핵심부품인 CONNECTOR PIN과 각종 비철금속 WIRE를 20년 이상 전문으로 제조해왔습니다.

부영전자부품은 급변하는 시장 상황에 빠르게 대처하여 끊임없는 기술개발과 생산시설의 자동화 설비 투자로 원재료가공에서부터 제품생산에 이르기까지 ONE-STOP LINE으로 제품을 생산 함으로서 수준 높은 제품과 가격 경쟁력 확보로 거대 중국시장과 그 외 해외시장과의 동등한 경쟁력을 갖추어 기초 소재생산의 선주주자가 되도록 최선의 노력을 다하고 있습니다.

Company with sufficient specialized knowledge and technical know-how for over 20 years

Booyoung Electronic Parts was founded in 1985 to manufacture the connector pin and various non-ferrous metal wires, the core parts for entire industries in electric Connectors used in electronic, electric, communication and industrial equipment and others for over 20 years.

Booyoung Electronic Parts is committed to make ceaseless technology development and investment on automation equipment in the production facilities to respond to the drastically changing market situation in a way of manufacturing the products in one-stop line from the raw material processing to the product manufacturing.

This is to make the optimal effort to be the leader of basic material manufacturing by having the equivalent competitiveness for high level of products and price competitiveness edge against the vast Chinese market and other overseas markets.



부영전자부품
Booyoung Electronic

대표/President
김 판 규
Kim, Pan Gyu

경영 방침/Management Policy

고품질 제품을 위한 노력!

부영전자부품은 황동 PIN을 개발, 생산, 판매 및 부가서비스를 실시하는 회사로서 다음의 품질방침에 따라 조직의 품질경영시스템을 수립, 유지, 관리하고 있습니다.

1. 지속적인 품질개선노력과 품질 우선 주위를 추구하여
2. 고객이 요구하는 품질, 납기, 가격을 충족시켜 고객만족을 현실화 하고 있습니다.

부영전자부품의 “품질 목표”는 품질경영시스템의 수립과 이를 철저히 이행함으로써 (1) 불량률 제로화 (2) 고객 불만의 제로화 (3) 생산설비 효율 극대화를 위해 노력합니다.

환경을 지키는 사회 친화적인 노력!

부영전자부품은 “황동 PIN”을 개발, 생산, 판매 및 부가서비스를 실시하는 회사로서 환경보전에 대한 중요성을 인식하고 그에 따르는 사회적 책임을 다하기 위하여 다음과 같은 환경방침을 선언하고 준수하기 위해 항상 노력하고 있습니다.

1. 체계적인 환경개선을 위해 목표 및 세부목표를 설정하고 운용한다.
2. 환경오염물질 배출을 최소화한다.
3. 환경관련 국내외 법규 및 그 밖의 요구사항을 준수한다

부영전자부품의 “환경 목표”는 환경경영시스템의 수립과 이를 철저히 이행함으로써 (1) 폐기물 발생 최소화 (2) 재활용 극대화 (3) 법규준수의 생활화를 실천하고 있습니다.

Efforts for high quality products!

Booyoung Electronic Parts is a company that undertakes the development, production, sales and added service of bronze pin that establishes, maintains and manages the quality management system of the organization in accordance with the following quality policies.

1. Pursue the sustained quality improvement effort and quality priority system
2. Realize the customer satisfaction by satisfying the quality, delivery period and price as demanded by customers

The “Quality Objective” of Booyoung Electronic Parts is to establish the quality management system and its thorough undertaking for (1) zero defective rate; (2) zero customer complaint; and (3) efficiency maximization for production facilities.

Social-friendly efforts to conserve the environment!

Booyoung Electronic Parts is a company that undertakes the development, production, sales and added service of “bronze pin” that has declared the following environmental policies and recognizes the importance on the environment protection and makes effort to comply with them to fulfill its social responsibilities.

1. Set and operate the goals for systematic environmental improvement and the detailed goals thereto.
2. Minimize the release of the environmental pollution substance.
3. Comply with the environment-related domestic and overseas laws and regulations of domestic and other requirements.

The “Environment Objective” of Booyoung Electronic Parts is to establish the environment management system and its thorough performance for (1) minimization of waste substance; (2) maximization of recycling; and (3) practicing to comply with the laws and regulations.

생산 현장/Production Site



고품질을 유지하면서도 높은 생산성을 위해 특별히 설계된 와이어 생산기!

부영전자부품의 오랜 노하우로 설계되고 제작된 와이어생산기는 국제표준화기구(ISO) 규격을 준수하고 한국공업규격(KS)이 권고한 표준오차 및 공차를 최소화한 고품질의 와이어 생산 설비입니다. 또한 친환경적인 요소를 고려한 기계설계는 고속으로 신선했어 생산효율을 극대화 함으로서 고객이 원하는 품질과 납기요구를 만족시켜드립니다.

For maintaining high quality with high productivity, specially designed wire producer!

The wire generator that is designed and produced with the long accumulated know-how of Buyoung Electronic Parts is the high quality wire production equipment that minimized the standard error and idle operation recommended by the Korean Standard (KS) and complied with the dimension of International Standardization Organization (ISO).

In addition, the machine design with the pro-environment element is wired in high speed to maximize the production efficiency to satisfy the demand of quality and delivery time that customer demands.



1일 3천만개 커넥터핀을 생산하는 국내 최대 설비!

PIN CUTTING 생산설비는 국내 최대 생산설비와 최신설비로 KS 권고 이하의 허용공차 최소화 및 정밀화 무인자동화로 생산량에서 뿐만 아니라 가격경쟁력에서도 타의 추종을 불허합니다.

Largest facilities of Korea that manufactures 30 million units of connector pin for each day!

The pin cutting production equipment is the largest production equipment as well as the newest equipment in Korea that it is second to none in terms of production volume as well as the price competitiveness with the minimization of permitted idle gap less than the KS recommendation and the unmanned automation for precision.



품질관리팀

Quality Management Team

생산설비 개발 및 유지 관리팀

Production Facilities Development
and Maintenance Team



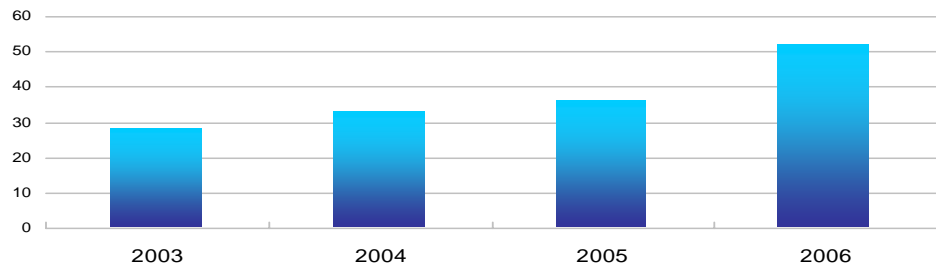
생산능력/Production capability

| 품 목 Classification | 시설능력 Facilities capability | 생산량 Production volume | 조 업 륜 Operation rate |
|-----------------------|-------------------------------|--------------------------|-------------------------|
| 황동각선 Yellow Brass | 65 ton | 58 ton | 90 % |
| Connector PIN | 350,000,000 PIN | 250,000,000 PIN | 90 % |

설비현황/Status of equipment

| No | 설비명 Equipment name | 대수 units | 비고 Remark |
|----|----------------------------------|-------------|---|
| 1 | Pin cutting M/C | 60 | |
| 2 | 각선기 Wire drawing of each wire | 8 | 사각선 및 원형선을 생산한다. The square wire and the circular wire are produced. |
| 3 | 진공열처리 Vacuum heat treatment | 1 | 금속표면의 산화방지와 표면질을 높인다. It enhances the surface quality and prevents oxidation of the metal surface. |
| 4 | 압연기 Rolling mill | 2 | 각종 평각선을 생산한다. Various rectangular wires are produced. |
| 5 | 공구현미경 Toolmaker's microscope | 1 | 외관 및 정밀한 부의 치수를 측정한다. It measures the dimension of appearance and finite part. |
| 6 | 연삭기 Grinder | 2 | |

매출성장/Trend of sales growth (단위: 억원, Unit: hundred Million)



**부영전자부품의 높은 생산성은
고객을 위한 프로정신에서 시작되어 매년 증가하는
매출성장으로 증명됩니다.**

**High productivity of Buyoung Electronic Parts is proven with the
sales growth that begins from the professional service mentality
to the annually increasing sales growth each year.**

A close-up, high-angle photograph of industrial machinery used for processing wire. The scene features a complex arrangement of metal components, including a large cylindrical roller in the foreground, a smaller roller with a textured surface, and various guides and tensioning mechanisms. Several thin, parallel wires are being fed through the machine, creating a sense of motion. The background is a blurred green, suggesting a factory environment. The lighting is bright, highlighting the metallic surfaces and the precision of the equipment.

Connector Pin & Wire

Product Specification



BOOYOUNG ELECTRIC

원재료 제품소개

1. 인청동 Phosphor Bronze

| Mark KS (JIS) | Intensity | Chemical component | | | | | 인장시험 Tensile test | | |
|---------------------|-----------|--------------------|-----------------|-------------------|----|----|-------------------|----------------------------|-------------------|
| | | Cu+Sn+P | Sn | P | Pb | Fe | 경도 Hardness mm | Tensile Strength Kgf/mm | Elongation (%) |
| C5111 1 | 0 | 99.5 or more | 3.5 ~ 4.5 | 0.03 ~ 0.35 | - | - | - | 30 or more | 38 or more |
| | 1/4H | | | | | | 0.2 or more | 35~45 | 25 or more |
| | 1/2H | | | | | | 0.2 or more | 42~52 | 12 or more |
| | H | | | | | | 0.2 or more | 50~60 | 7 or more |
| | EA | | | | | | 0.2 or more | 58 or more | 3 or more |
| C5102 1 | 0 | 99.5 or more | 4.5 ~ 5.5 | 0.03 ~ 0.05 | - | - | - | 31 or more | 40 or more |
| | 1/4H | | | | | | 0.2 or more | 38~48 | 28 or more |
| | 1/2H | | | | | | 0.2 or more | 48~58 | 15 or more |
| | H | | | | | | 0.2 or more | 58~68 | 7 or more |
| | EH | | | | | | 0.2 or more | 63 or more | 4 or more |
| C5191 2 | 0 | 99.5 or more | 5.5 ~ 7.0 | 0.03 ~ 0.35 | - | - | - | 32 or more | 42 or more |
| | 1/4H | | | | | | 0.2 or more | 40~52 | 35 or more |
| | 1/2H | | | | | | 0.2 or more | 50~62 | 20 or more |
| | H | | | | | | 0.2 or more | 60~70 | 8 or more |
| | EH | | | | | | 0.2 or more | 65 or more | 5 or more |
| C5212 3 | 0 | 99.5 or more | 7.0 ~ 9.0 | 0.03 ~ 0.35 | | | - | 35 or more | 45 or more |
| | 1/4H | | | | | | 0.2 or more | 40~52 | 40 or more |
| | 1/2H | | | | | | 0.2 or more | 50~62 | 30 or more |
| | H | | | | | | 0.2 or more | 60~72 | 8 or more |
| | EH | | | | | | 0.2 or more | 70 or more | 5 or more |

2. 양백선 Nickel Silver Wire

| Mark KS (JIS) | Intensity | Chemical component | | | | | | Tensile test | | |
|-----------------------|-----------|--------------------|----------------|-----------------|-----------|----------------|-------------------|---------------------------------------|----------------------------------|-------------------|
| | | Cu | Pb | Fe | Zn | Mn | NI | Hardness mm | Tensile Strength Kgf/mm(N/mm) | Elongation (%) |
| NsW1 (C7701W) 1 | 0 | 54 ~ 58 | 0.1 or less | 0.25 or less | Remainder | 0.5 or less | 16.5 ~ 19.5 | 0.5 or more | 440~635 | 45~65 |
| | 1/2H | | | | | | | 0.5 5 0.5 or more and 5 or less | 635~785 | 65~80 |
| | H | | | | | | | | 765 | 78 or more |
| NsW2 (C7521W) 2 | 0 | 54 ~ 58 | 0.1 or less | 0.25 or less | Remainder | 0.5 or less | 16.5 ~ 19.5 | 0.5 or more | 440~635 | 45~65 |
| | 1/2H | | | | | | | 0.5 5 0.5 or more and 5 or less | 635~785 | 65~80 |
| | H | | | | | | | | 765 | 78 or more |
| NsW3 (C7541W) 3 | 0 | 54 ~ 58 | 0.1 or less | 0.25 or less | Remainder | 0.5 or less | 16.5 ~ 19.5 | 0.5 or more | 440~635 | 45~65 |
| | 1/2H | | | | | | | 0.5 5 0.5 or more and 5 or less | 635~785 | 65~80 |
| | H | | | | | | | | 765 | 78 or more |
| NsW4 (C7451W) 4 | 0 | 54 ~ 58 | 0.1 or less | 0.25 or less | Remainder | 0.5 or less | 16.5 ~ 19.5 | 0.5 or more | 440~635 | 45~65 |
| | 1/2H | | | | | | | 0.5 5 0.5 or more and 5 or less | 635~785 | 65~80 |
| | H | | | | | | | | 765 | 78 or more |

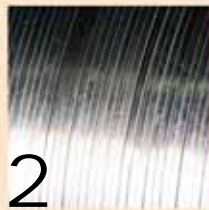
Wire

3. 동선/황동선 Red Brass/Yellow Brass

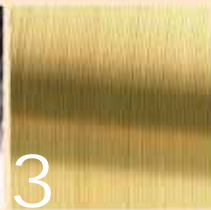
| Mark KS (JIS) | Intensity | Chemical component | | | | | Tensile test | | |
|-----------------------|-----------|---------------------|--------------------|--------------------|-----------|---------------------|-------------------------------|----------------------------------|-------------------|
| | | Cu | Pb | Fe | Zn | P | Hardness mm | Tensile Strength Kgf/mm(N/mm) | Elongation (%) |
| DCuW1 (C1220W) | 0 | 99.90 or more | - | - | - | 0.015 ~ 0.040 | 0.5 or more and 2 or less | 20 or more (196 or more) | 15 or more |
| | | | | | | | 2 Over | | 25 or more |
| | 1/2H | | | | | | 0.5 or more and 12 or less | 26~27(255~363) | - |
| | H | | | | | | 0.5 or more and 10 or less | 35 or more (343 or more) | - |
| BsW1 (C2600W) 1 | 0 | 68.5 ~ 71.5 | 0.05 or more | 0.05 or more | Remainder | - | 0.5 or more | 275 or more | 20 or more |
| | 1/8H | | | | | | 0.5 or more and 12 or less | 345~440 | 10 or more |
| | 1/4H | | | | | | | 390~510 | 5 or more |
| | 1/2H | | | | | | | 490~610 | - |
| | 3/4H | | | | | | 0.5 or more and 10 or less | 590~705 | - |
| | H | | | | | | | 685~805 | - |
| | EH | | | | | | | 785 or more | - |
| BsW2 (C2700W) 2 | 0 | 63.0 ~ 67.0 | 0.07 or more | 0.05 or more | Remainder | - | 0.5 or more | 30 or more (294 or more) | 20 or more |
| | 1/8H | | | | | | 0.5 or more and 12 or less | 35~45(343~441) | 10 or more |
| | 1/4H | | | | | | | 40~52(392~509) | 5 or more |
| | 1/2H | | | | | | | 50~62(490~608) | - |
| | 3/4H | | | | | | 0.5 or more and 10 or less | 60~72(588~706) | - |
| | H | | | | | | | 70~82(686~806) | - |
| | EH | | | | | | | 80 or more (785 or more) | - |
| BsW3 (C2800W) 3 | 0 | 59.0 ~ 63.0 | 0.10 or more | 0.07 or more | Remainder | | 0.5 or more | 315 or more | 20 or more |
| | 1/4H | | | | | | 0.5 or more and 12 or less | 345~460 | 5 or more |
| | 1/2H | | | | | | | 440~590 | - |
| | 3/4H | | | | | | 0.5 or more and 10 or less | 540~705 | - |
| | H | | | | | | | 685 or more | - |



1
인청동
Phosphor Bronze



2
양백선
Nickel Silver Wire



3
황동선
Red Brass/Yellow Brass



4
괘삭황동선
Free Cutting Brass



5
타프피치동선
Tough Pitch Copper



6
니켈합금선
Nickel Alloy

- 4. 괘삭황동 Free cutting brass
- 5. 타프피치동 Tough Pitch Copper
- 6. 니켈합금선 Nickel Alloy

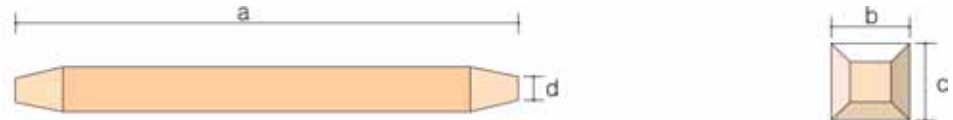


- 7. 그 외 비철금속 Other's
- 8. 수입재료 상담

핀 제품소개

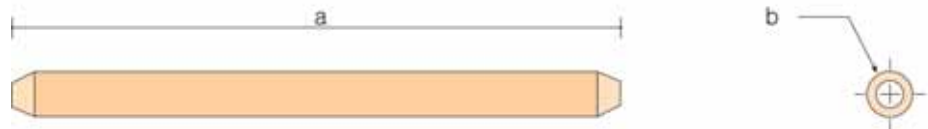
1.사각핀 규격 SQUARE PINS

| (SQUARE) | (Size) | | | | (Length) | | (Reference) |
|--------------|--------|--------|--------|--------|----------|--------|-------------|
| | a | b | c | d | (Min.) | (Max.) | |
| 0.25mm~1.7mm | ±0.1 | ±0.005 | ±0.005 | 0.30mm | 1.9mm | 60mm | |



2.라운드핀 규격 ROUND PINS

| (ROUND) | (Size) | | (Length) | | (Reference) |
|----------------|--------|--------|----------|--------|-------------|
| | a | b | (Min.) | (Max.) | |
| 0.25 mm~2.0 mm | ±0.1 | ±0.005 | 1.9mm | 60mm | |



제품별 생산 규격 Dimension of production for each product

| 사각선 제품 규격 Product dimension for square wire (mm) | |
|---|--|
| 0.25 x 0.25, 0.30 x 0.30, 0.32 x 0.32, 0.35 x 0.35, 0.40 x 0.40, 0.415 x 0.415 | |
| 0.42 x 0.42, 0.45 x 0.45, 0.50 x 0.50, 0.515 x 0.515, 0.55 x 0.55, 0.60 x 0.60 | |
| 0.623 x 0.623, 0.625 x 0.625, 0.635 x 0.635, 0.640 x 0.640, 0.70 x 0.70, 0.79 x 0.79 | |
| 0.80 x 0.80, 0.84 x 0.84, 0.90 x 0.90, 0.99 x 0.99, 1.00 x 1.00, 1.04 x 1.04, 1.125 x 1.125 | |
| 1.07 x 1.07, 1.135 x 1.135, 1.45 x 1.45, 1.50 x 1.50, 1.51 x 1.51, 1.70 x 1.70 | |
| 원형 제품 규격 Product dimension for circular wire (φ) | |
| 0.25, 0.300, 0.42, 0.43, 0.46, 0.48, 0.49, 0.500, 0.530, 0.560, 0.570 | |
| 0.620, 0.640, 0.650, 0.690, 0.700, 0.720, 0.730, 0.760, 0.765, 0.800 | |
| 0.830, 0.900, 0.970, 1.040, 1.200, 1.300, 1.400, 1.500, 1.600, 1.800 | |
| 편각선 제품 규격 Product dimension for declined wire (mm) | |
| 0.3 x 1.9, 1.0 x 1.2, 0.500 x 1.00, 0.400 x 0.600, 0.400 x 3.900, 0.3 x 1.900 | |
| 0.33 x 1.95, 0.25 x 1.95, 0.500 x 0.800, 0.40 x 0.400, 0.35 x 3.9, 0.3 x 0.8 | |
| 0.600 x 0.700, 0.500 x 1.500, 0.800 x 1.800 | |



각 소재별 규격은 고객의 요구기준에 준 하는 제품을 생산 가능하며, 외경 공차는 ±0.005으로 관리한다.
For each material, the ordered production of separate dimension is possible and the division on external diameter is ±0.005.

Connector Pin



동사각벤딩핀
Copper square vending pin



황동원형핀
Yellow brass circular pin



스텐원형핀
Stain circular pin



황동사각스탑퍼벤딩핀
Yellow brass square stopper vending pin



황동석도금사각핀
Yellow brass tin-coated square pin



인청동사각스탑퍼핀
Phosphor copper square stopper pin



황동사각핀
Yellow brass square pin



인청동원형=핀
Phosphor bronze circular □-pin



◀ 황동사각스탑퍼핀
Yellow brass square stopper pin



▶ 황동스탑퍼원형핀
Yellow brass stopper circular pin



황동사각광택벤딩핀
Yellow brass square gloss vending pin



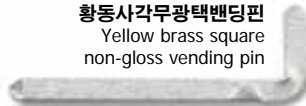
황동사각벤딩핀
Yellow bronze square vending pin



황동사각무광택벤딩핀
Yellow brass square non-gloss vending pin



황동원형석도금=핀
Yellow brass circular tin-coated □-pin



황동원형석도금스탑퍼핀
Yellow brass bright tin-coated stopper pin



BOOYOUNG ELECTRIC

www.booyoung21.co.kr

부영전자부품

소재지 : 경기도 광주시 오폭읍 문형리 255-4

전화 : (031) 765 - 7904 ~ 5

팩스 : (031) 765 - 5073

BOOYOUNG ELECTRIC COMPANY

#255-4, Moonhyung-Ri, Ohop-Up, Kwangju City,
Gyeonggi-Do, Korea

Tel : +82-31-765-7904~5

Fax : +82-31-765-5073