



32 Years
Power Conversion
Expert



Advan



tages



Our Strategy

Renewable Energy

Critical Power

Cloud Service

Our Strategy



Anchored by critical power and propelled by renewable energy and cloud services, Kehua is providing comprehensive management solutions for power protection and intelligent monitoring, promoting interconnectivity between different energy sources. We aim to integrate the power of Ecological Energy Network into various industries and realize the key needs of customers with smart, safe, green and efficient power solutions.

Advantages

Renewable Energy



Our Performance

PV Solution

Micro-Grid/Energy Storage

EV Charger

Energy Internet

PV Power Plant Operation

13GW+ Global Application

1000+ PV Station Projects

600MW+ ESS Installation

No. 5 in Global PCS Supplier Market Ranking

(>10kW)

RELIABLE · RENEWABLE · RESPONSIBLE

Critical Power



8

Power Protection

Energy Saving

System Integration Service

Intelligent Power Management

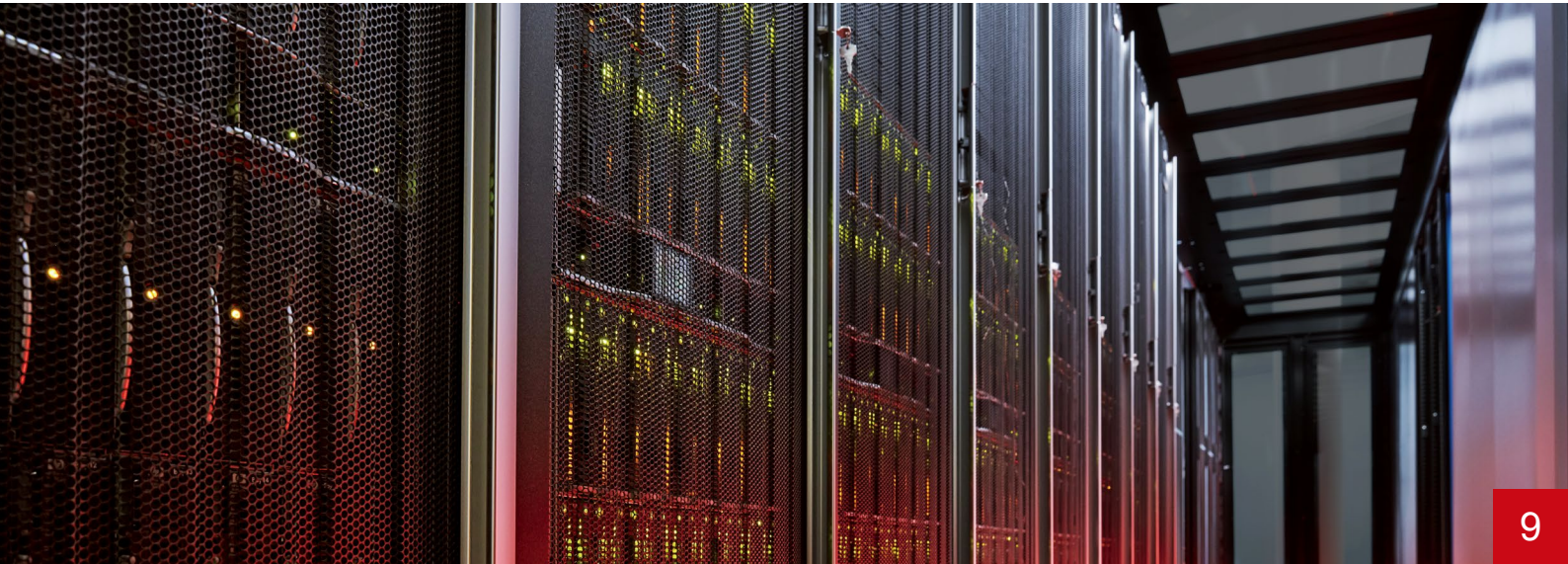
Our Performance

No.1 Chinese UPS brand for continuous **22-year** market share.

200,000+ users in **100+** countries and regions all over the world.

Advantages

Cloud Service



9

Our Performance

Cloud Service

Cloud Security

Cloud Power

IDC Turnkey Solution

10+ Years' Experience

2Tbps+ Export Bandwidth

25,000+ Racks of Construction

190,000+ m² Data Center Areas

RELIABLE · RENEWABLE · RESPONSIBLE

*Advanced R&D Effort
Innovation in Development*





R&D

Advanced R&D Effort

Design of Product & Technology Development Process

Integrated product development (IPD)

Best industry practice elements

Market management

Process re-engineering

Product re-organization

12

Implementation of Product & Technology Development Process

Integrated product development method (IPD)

Product development process

Efficient evaluation mechanism

Information management platform (PLM)

Core technologies in power electronics

R&D

A person wearing a white cleanroom suit, hood, and mask is working in a laboratory. They are holding a clipboard and a pen. The background shows a cleanroom environment with other people in similar suits and various pieces of equipment.

Professional team

3 State Council Experts
with more than 950 R&D
engineers

R&D Investment

Exceed 7% of the
company's turnover

Continuous Innovation

30 years of technological
breakthrough

RELIABLE · RENEWABLE · RESPONSIBLE

Innovation in Development



1 Power & EMC Test Station

3 R&D Centers

4 State Council Experts.

1000+ Patents & Copyrights

130+ National and Industrial Standards

30+ National, Provincial Level Torch Plan Projects

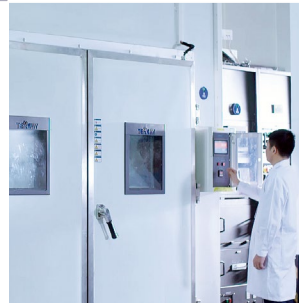
R&D



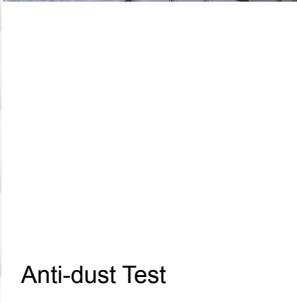
MW Test Lab



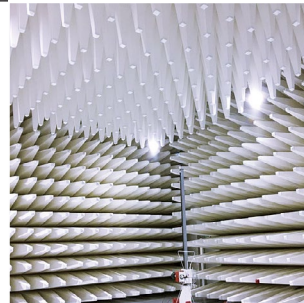
Battery Cycling Lifetime



High & Low Temperature Test



Anti-dust Test



EMC Test



Vibration Test




Salt-spray Test

Product

A close-up photograph of a network switch or patch panel. The image shows a dense array of ports with numerous cables plugged in. A person's hands are visible on the right side, working on the cables. The background is slightly blurred, showing more of the network infrastructure. The word "Product" is overlaid in large white text on the left side of the image.

ction

A close-up, side-profile view of a male technician with a shaved head and a light beard, wearing a blue polo shirt. He is focused on a dense array of white and grey network cables plugged into a rack-mounted device, likely a switch or router. He holds a red-handled screwdriver in his right hand, positioned near a terminal block on the left. The background shows a metal mesh cage, suggesting a server room environment. The lighting is bright and even.

KPS (KEHUA Production System)

KPS (KEHUA Production System)



320,000m² Manufacture Areas

2 Million Units Annual Productions

14 GW Solar Annual Production

4 Major Modern Professional Manufacture Bases

Production

7S

Seiri, Seiton, Seiso,
Seiketsu, Shitsuke,
Safety, Saving



TQM

Total Quality
Management



TPM

Total Productive
Maintenance

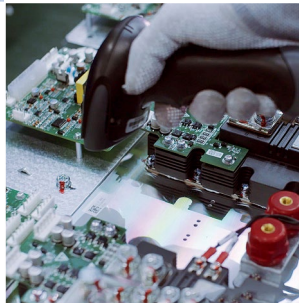


TVM

Total Visual
Management

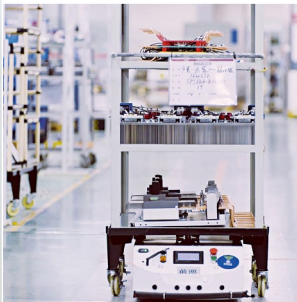
LEAN

LEAN Production



WSS

Work Safety
Standardization



CIP

Continuous,
Improvement, Process





Service



e

*Our Service
Partners
Global Market
Applications*

Our Service



Professional Support Team

Offline On-site Support

Online Engineer Support

Training and Guidance

24H Quick Response

Based on the concept of the Full Service Lifecycle, we put service before all else. An excellent and efficient service system with 3A concept (Assured, Apropos and Active), together with service network stations such as China, India, USA, France, Indonesia, Korea and Vietnam, we quickly respond to customer's requirements in the local area.

Service

Partners



Global Market

● America

● Europe

● Africa

● Oceania

● Asia

● China

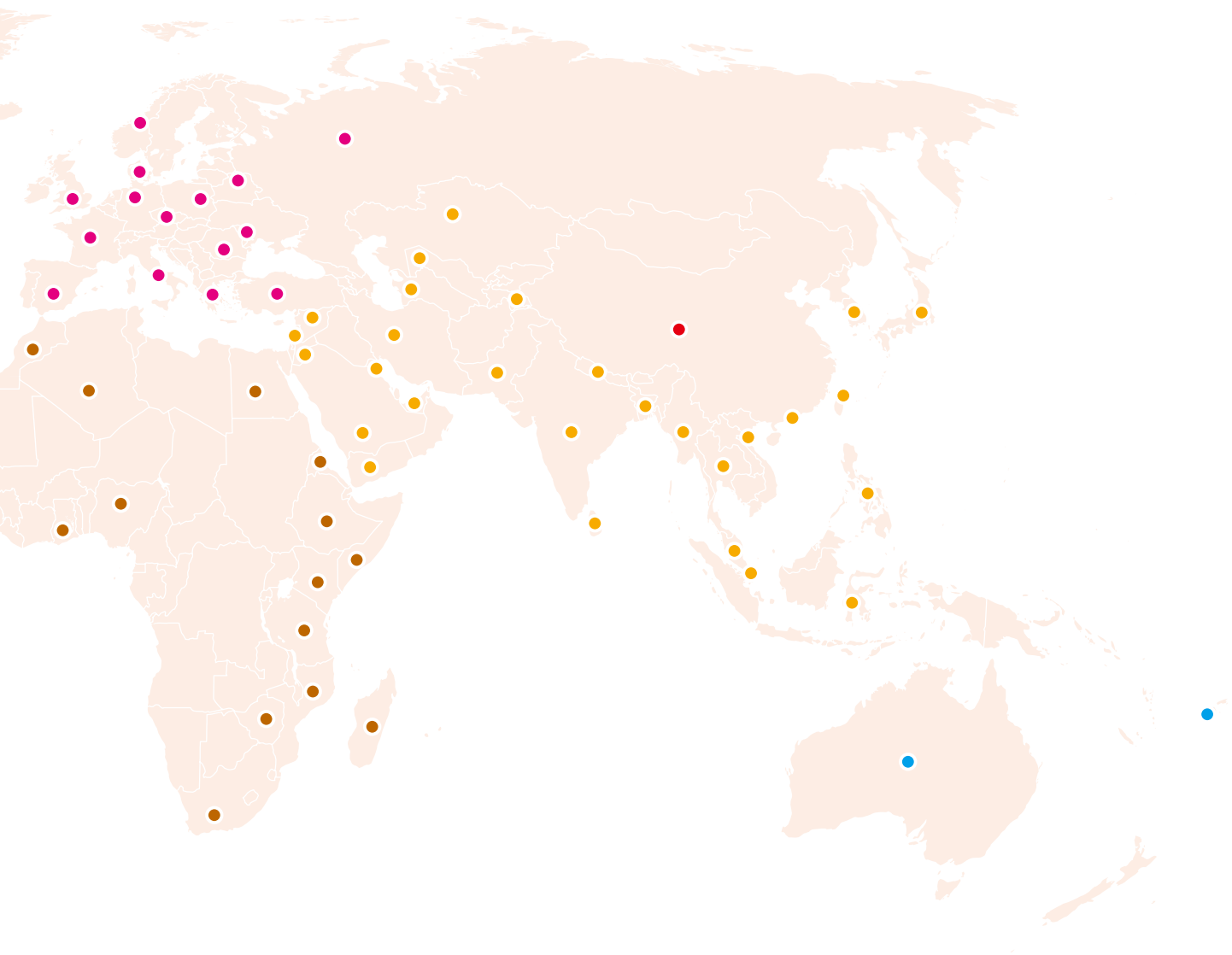


24

We make commitment globally

Today, KEHUA solutions and products reached five continents, serving users over 100 countries and regions in various industries like finance, transportation, heavy industry, communications, government, education, medical care, power energy and etc.

Service



Applications

Renewable Energy



Indian 200MW Power Plant Project



Shanxi 200MW Power Plant



4MW Distributed PV Power Plant



Hunan 100MW Grid-Side ESS Project



150MW Fishery Power Plant



Thailand 2MW Rooftop Project



Uzbekistan 1.2MW ESS Project



Russian 100MW Power Plant



Korean 2MW Distributed Power Plant



Residential ESS Project in Argentina



10 MW Central-distributed PV Power Plant



American Distributed PV Power Plant



410kW/1MWh Micro-grid System in Madagascar

Critical Power



Hong Kong–Zhuhai–Macau Bridge



Vietnam Hanoi Urban Railway



Faleolo International Airport



Hospital in Indonesia



Brunei Petrochemical Industry Base



Ukraine Parliament



Russia Local Bank's Security System

Applications

Cloud Service



4 Self-build IDC in 3 Major Cities



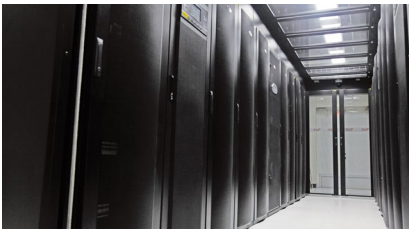
China Mobile Project



China Telecom Project



Shanghai Unicom Project



Bank of China Project



Huabei Oilfield Project



Zhangjiakou EMS Project

To become a
global intelligent
energy service
provider





Kehua Data Co., Ltd.

Add: No. 457, Malong Road, Torch High-Tech Industrial
Zone, Xiamen Fujian 361006 China

Tel: +86-592-5160516

Fax: +86-592-5162166

Email: Intertrade@kehua.com

Web: www.kehua.com



Version No.: 20210122