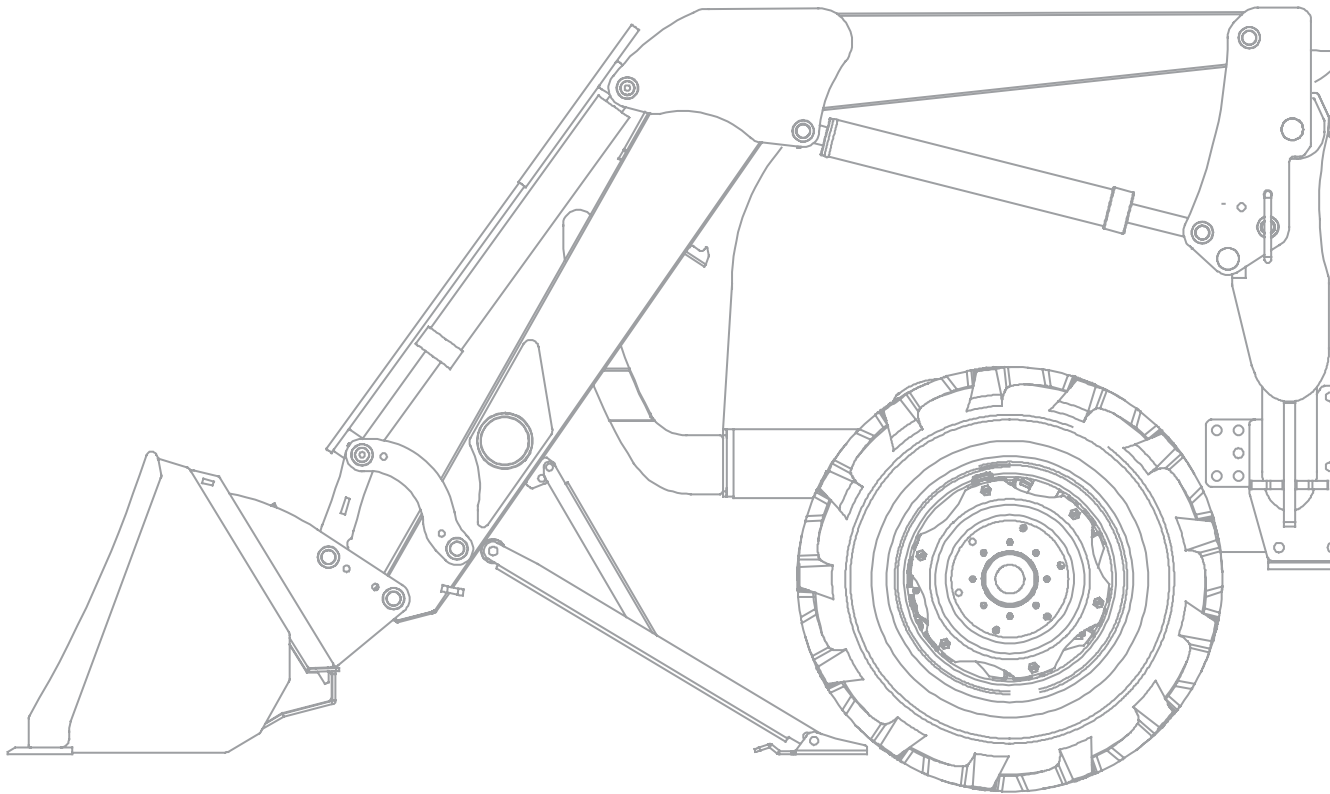


Agricultural machinery
specialist producers



HANIL

HANIL INDUSTRY Co., Ltd.



Contents

Contents	02
History	03
Front End Loader (HL series)	04
Use function	05
Specifications Comparison	06
Features	08
•Standards	
•Option	
Production Facilities	09
Major Clients	10
Global Network	11



History

1980

- HANIL industry Co., Ltd Established

1991

- Tractor working machine Loaders development
- Tractor working machine Grader Trailer development

93

- Korea Agricultural Machinery Industry Cooperative Join Members

95

- Daedong industry, Kuk-je General machinery

96

- NACF Delicery Agreement

97

- LS Mtron, Kubota Korea OEM Agreement

07

- Yanmar Korea Delivery Agreement

2010

- ISO 9001 Authentication

11

- Companies specializing in material part Authentication
- Dedicated to research and development Authentication

12

- ISO 14001 Authentication
- INo-BIZ Innovation SMEs Authentication

13

- Japan's Sanyo kiki machinery and tools Delivery
- CE Authentication

14

- MAIN-BIZ Innovation SMEs Authentication
- Chinese export market

15

- Venture Company Authentication

16

- Company-affiliated R&D centers, Koita
- R & D Center Authentication

17

- Export to Philippines, Indonesia and Australia



Front loader (HL series)



Agricultural machinery
specialist producers

HANIL

HANIL INDUSTRY Co., Ltd.

Front loader

HL series

All tractor which can be mounted on
domestic and international.
An excellent compatibility, powerful durability
Multipurpose multifunction front end loader.



KIOTTI SERIES



KUBOTA L 3608



BRANSON SERIES



YANMAR EF 514



LS Mtron SERIES



KUBOTA M 9540

Use function



Scooping

Moves the solid using the bucket to the specified position.

Grading

Flatten the ground as you want.



Dumping

Dump the soil wherever you want.

Grappling-1

Bulky or large objects can be picked up.(ex. Bale loader)



Grappling-2

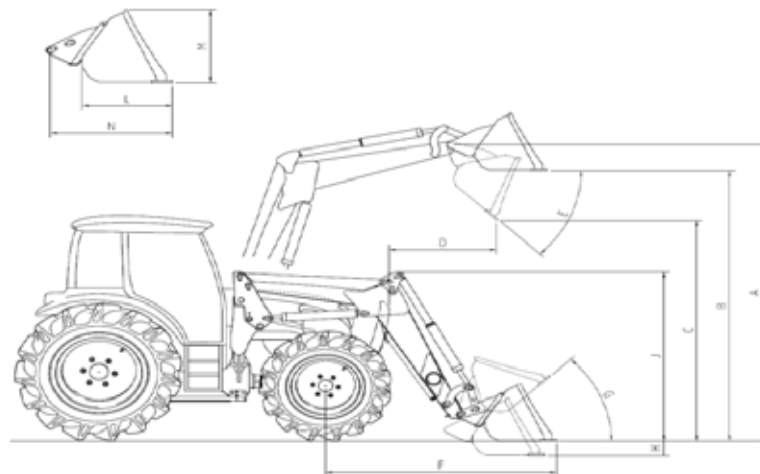
Long objects can be picked up.(Ex. Sugar cane grappler)

Hole digger

Drill the ground with a blade.



Specifications Comparison



Loader Model : HL 1560 20 ~ 30 hp

A.	Maximum lift height to pivot pin	2,177mm	85.7"
B.	Maximum lift height under level bucket	2,004mm	78.9"
C.	Clearance with bucket dumped	1,679mm	66.1"
E.	Maximum dump angle	50.0°	50 °
G.	Maximum rollback angle	30.0°	30 °
H.	Digging depth	140mm	5.5"
1.	Lift capacity to maximum height-at pivot pin	1,027kg	2263.5 lb
2.	Breakout force-at pivot pin	1,540kgf	3396.1 lb
3.	Bucket rollback force at ground line	705kgf	1555.1 lb
4.	Bucket width	1,168mm	46.0"
5.	Bucket capacity	0.18m³	6.2 cu.ft
6.	Boom cylinder	25x60x360.5x130STmm	1x2.4x14.2x5.1ST"
7.	Bucket cylinder	30x45x589x330STmm	1.2x1.8x23.2x13ST"
8.	Bucket Leveling :	NON-Self level type	

Loader Model : HL 1800 30 ~ 40 hp

A.	Maximum lift height to pivot pin	2,557mm	100.7"
B.	Maximum lift height under level bucket	2,269mm	89.3"
C.	Clearance with bucket dumped	1,838mm	72.3"
E.	Maximum dump angle	47.0°	47.0°
G.	Maximum rollback angle	47.5°	47.5°
H.	Digging depth	120mm	4.7"
1.	Lift capacity to maximum height-at pivot pin	959kg	2,114lb
2.	Breakout force-at pivot pin	2,020kgf	4,454lb
3.	Bucket rollback force at ground line	1,072kgf	2,363lb
4.	Bucket width	1,500mm	59.0"
5.	Bucket capacity	0.32m³	11.4cu.ft
6.	Boom cylinder	35x60x666.5x435STmm	1.4x2.4x26.2x17.1ST"
7.	Bucket cylinder	35x60x674x363STmm	1.4x2.4x26.5x14.3ST"
8.	Bucket Leveling :	NON-Self level type	

Loader Model : HL 1900 40 ~ 55hp

A.	Maximum lift height to pivot pin	2,679mm	105.5"
B.	Maximum lift height under level bucket	2,390mm	94.1"
C.	Clearance with bucket dumped	1,933mm	76.1"
E.	Maximum dump angle	52.7°	52.7°
G.	Maximum rollback angle	48.0°	48.0°
H.	Digging depth	118mm	4.6"
1.	Lift capacity to maximum height-at pivot pin	1,198kg	2,640lb
2.	Breakout force-at pivot pin	2,458kgf	5,419lb
3.	Bucket rollback force at ground line	1,355kgf	2,987lb
4.	Bucket width	1,500mm	59.0"
5.	Bucket capacity	0.35m³	12.2cu.ft
6.	Boom cylinder	35x60x725x435STmm	1.4x2.4x28.5x17.1ST"
7.	Bucket cylinder	35x60x729x363STmm	1.4x2.4x28.7x14.3ST"
8.	Bucket Leveling :	NON-Self level type	

Specifications Comparison

Loader Model : HL 2100 50 ~ 65 hp

A.	Maximum lift height to pivot pin	3,001mm	118.1"
B.	Maximum lift height under level bucket	2,704mm	106.5"
C.	Clearance with bucket dumped	2,134mm	84"
E.	Maximum dump angle	55°	55°
G.	Maximum rollback angle	55.5°	55.5°
H.	Digging depth	120mm	4.7"
1.	Lift capacity to maximum height-at pivot pin	1,564kg	3,448lb
2.	Breakout force-at pivot pin	2,592kgf	5,715lb
3.	Bucket rollback force at ground line	1,309kgf	2,886lb
4.	Bucket width	1,600mm ~ 1,800mm	66.0" ~ 72.0"
5.	Bucket capacity	0.49m³	17.3cu.ft
6.	Boom cylinder	40x70x762.5x535STmm	1.6x2.8x30x21.1ST"
7.	Bucket cylinder	35x65x1110x340STmm	1.4x2.6x43.7x13.4ST"

Loader Model : HL 2200 65 ~ 80 hp

A.	Maximum lift height to pivot pin	3,124mm	123.0"
B.	Maximum lift height under level bucket	2,832mm	111.5"
C.	Clearance with bucket dumped	2,292mm	90.2"
E.	Maximum dump angle	56.0°	56.0°
G.	Maximum rollback angle	45.0°	45.0°
H.	Digging depth	120mm	4.7"
1.	Lift capacity to maximum height-at pivot pin	1,457kg	3,212lb
2.	Breakout force-at pivot pin	2,555kgf	5,632lb
3.	Bucket rollback force at ground line	1,321kgf	2,913lb
4.	Bucket width	1,800mm ~ 2,000mm	72.0" ~ 78.0"
5.	Bucket capacity	0.55m³	19.4cu.ft
6.	Boom cylinder	40x70x822.5x535STmm	1.6x2.8x32.4x21.1ST"
7.	Bucket cylinder	35x65x1170x340STmm	1.4x2.6x46.1x13.4ST"

Loader Model : HL 2400 80 ~ 90 hp

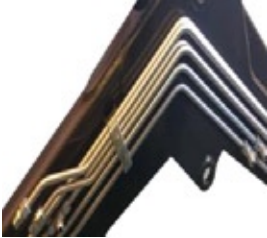
A.	Maximum lift height to pivot pin	3,400mm	133.9"
B.	Maximum lift height under level bucket	2,966mm	116.8"
C.	Clearance with bucket dumped	2,362mm	93.0"
E.	Maximum dump angle	55.0°	55.0°
G.	Maximum rollback angle	47.5°	47.5°
H.	Digging depth	150mm	5.9"
1.	Lift capacity to maximum height-at pivot pin	1,897kg	4182.2lb
2.	Breakout force-at pivot pin	2,583kgf	5694.8lb
3.	Bucket rollback force at ground line	2,561kgf	5645.6lb
4.	Bucket width	2,000mm ~	78.0" ~
5.	Bucket capacity	0.65m³	23.0cu.ft
6.	Boom cylinder	40x80x836x525STmm	1.6x3.1x32.9x20.7ST"
7.	Bucket cylinder	40x80x1258x414STmm	1.6x3.1x49.5x16.3ST"

Loader Model : HL 2600 100 hp ~

A.	Maximum lift height to pivot pin	3,732mm	146.9"
B.	Maximum lift height under level bucket	3,451mm	135.8"
C.	Clearance with bucket dumped	2,844mm	112.0"
E.	Maximum dump angle	55.0°	55.0°
G.	Maximum rollback angle	49.5°	49.5°
H.	Digging depth	137mm	5.4"
1.	Lift capacity to maximum height-at pivot pin	2,110kg	4651.5lb
2.	Breakout force-at pivot pin	2,736kgf	6032.3lb
3.	Bucket rollback force at ground line	2,560kgf	5643.0lb
4.	Bucket width	2,100mm ~	83.0" ~
5.	Bucket capacity	0.67m³	23.6cu.ft
6.	Boom cylinder	40x85x956x621STmm	1.6x3.3x37.6x24.4ST"
7.	Bucket cylinder	40x80x1372x419STmm	1.6x3.1x54x16.5ST"

Features_Standards , Option

Features_Standards



Hydraulic Pipe

Experienced much enhanced durability with the hydraulic pipes manufactured by BENTELER (Made in Germany) and applied to all models.



Special Hydraulic Cylinder

Special hydraulic cylinders are inspected one by one and it puts out the best performance even under rough working conditions.



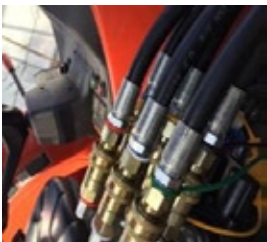
Dual Mounting / Dismounting Device

Anyone can easily mount or dismount the loader with simple one-touch lever.



Leveler

It maintains a certain angle to prevent the loaded object from scattering while the leveler is mounted to enable stable work.



External Hydraulic Coupler

This can be simply connected when using the machinery that requires hydraulic action. The operator can easily mount or dismount the part.



Separation Stand

It enables stable mounting / dismounting of the loader for it can adjust the height depending on the height of the ground.

Option



External Hydraulic Valve

We only use parts that are directly manufactured in Korea.



Convenient automatic implement locking

Connect the bucket to the loader and then release the lever; it will be tightly locked up for safe work.



Relief Valve

It automatically adjusts the hydraulic pressure to prevent overloading that can occur when working with the loader and ensure safe operation.



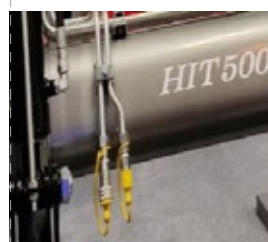
Accumulator

Hydraulic accumulator absorbs the shock during of loader work and protect the tractor.



Solenoid Valve

It allows the operator to use a variety of hydraulic machinery by connecting electronic valve and hydraulic couplings.



3rd function

Fast and efficient 3rd service adds versatility to your loader and tractor when using implements with hydraulic requirements.

Production Facilities



FARO Advanced 3D Measuring Instrument

We enhance the quality of finished products through the periodical process inspection of products and ensures the compatibility with target equipment through precise measurement.



Robotic Welder

Robotic welder is capable of delicate welding operations and mass producing precise parts. it results neat joints and increases durability of product.



CNC Bender / Cutter

CNC Bender and Cutter capable of handling small and medium sized product's.



Laser Processing

Laser processing enables precision processing.



Shearer / Bender

We use ordinary sheares and benders in combination with hydraulic equipment ro enhance production.



Shot Machine

This is for cleaning and descaling of the product's that require precise and detailed processing.



Spray Coating Facility

We produce smooth surface for products with the spray coating facility. The coat strongly endures contacts and does not peel off easily to enhance product's durability.



Durability Teste

Using test instrument, we upgraded the reliability of the product's.

Major Clients

Kubota

 **YANMAR**

 **Sanyokiki**

Branson
TRACTORS

TM TONGYANG MOOLSAN CO., LTD.

ASIA  **MASSEY FERGUSON**
ASIA TECHNOLOGY CO., LTD.

 **daedong**
대동공업

LS  **Mtron**

Global Network





Agricultural machinery specialist producers

www.hanil-cp.com



96-65 Naecheon-Gil, Yongsung-Myeon, Gyeongsan-si, Gyeongbuk, Korea
Tel : +82-(0)53-852-2921~3
hanil2921@naver.com