



## ▪ RF & MICROWAVE COMPONENT



# KJ COMTECH



# Table of Contents

- **Company Overview**
  - . Profile
  - . Major events
  - . Organization Chart
  - . Target Market & Sales
  - . Certificates, Patents
  - . Company View
  - . Equipment
- **Products Portfolios**
  - . Product Line & Customers
  - . Categories by products
  - . Product Introduction.

# Company Overview

## Profile

- Company Name:

**KJ COMTECH CO.,LTD**



- Location

**130-1, Sosabon-3dong, Sosa-ku, Bucheon-si,  
Gyeonggi-do, Korea**

**TEL: 82-70-4066-3098**

**FAX:82-32-347-8017**

**WEB SITE: <http://www.kjct.co.kr>**

**Mail: james@kjct.co.kr**

# Company Overview

## Profile

- **Establishment**  
**10<sup>th</sup>, October, 1983 year**
- **Capital**  
**\$700,000(2013)**
- **CEO**  
**Yoo, li-Hwan**
- **Employees**  
**44 people (2013)**

# Company Overview

## Major events

1983~1990

- 1983-KJ COMTECH was found
- Supplied connectors and cable assembly to Samsung, LG

1991~2000

- Supplied connectors and cable assemblies for repeater (PAGING, CDMA, PCS) to Samsung, LG, Hyundai

2001~2010

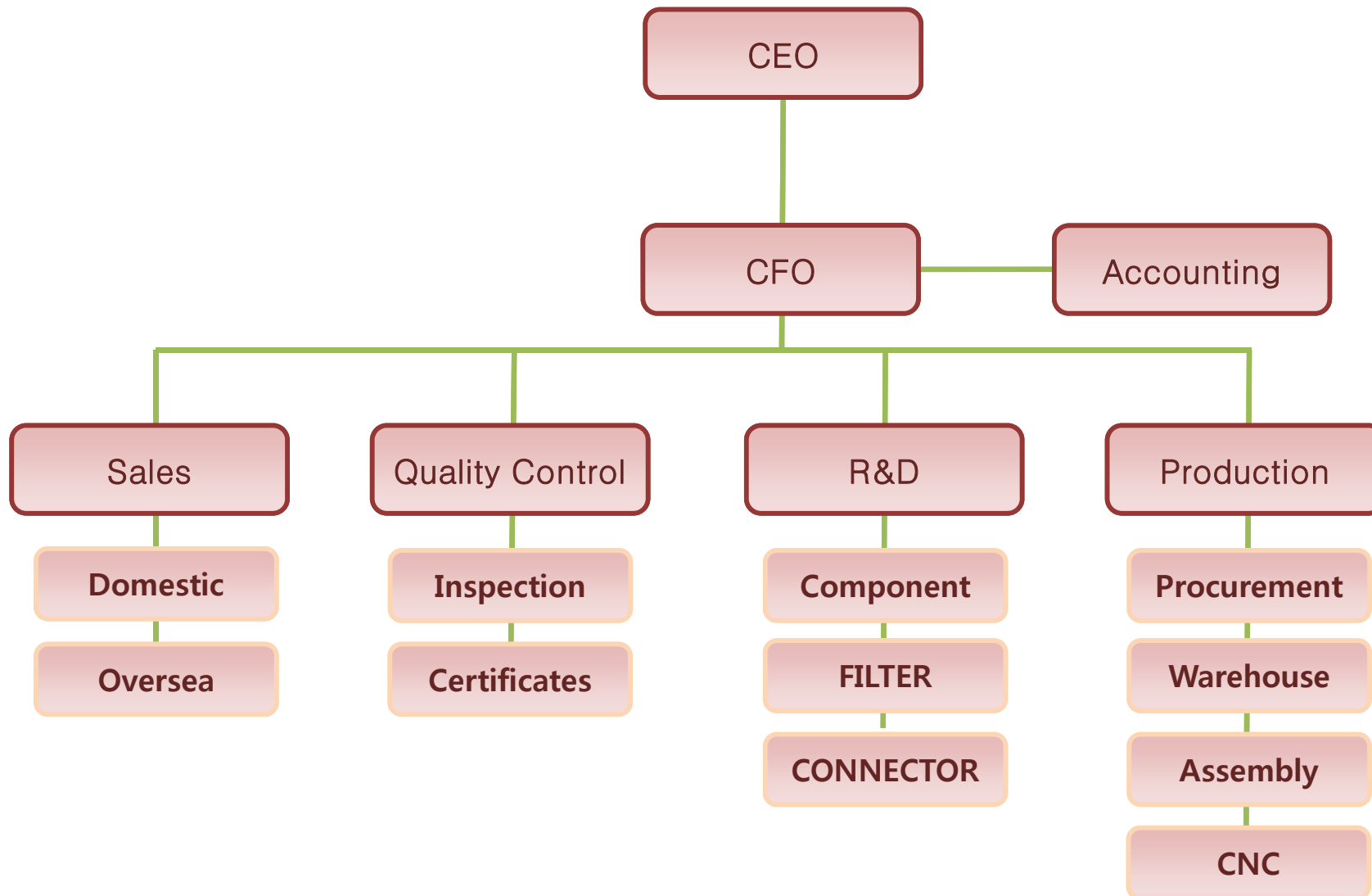
- 2003 ISO9001/TL9000 approved.
- Exporting cavity filters/duplexer, connectors, cable assembly to oversea. Supplied connectors for LCD & Automobile

2011~

- Supplied to signal generator and power divider to Samsung.
- Supplied to FAKRA connectors for automobile.

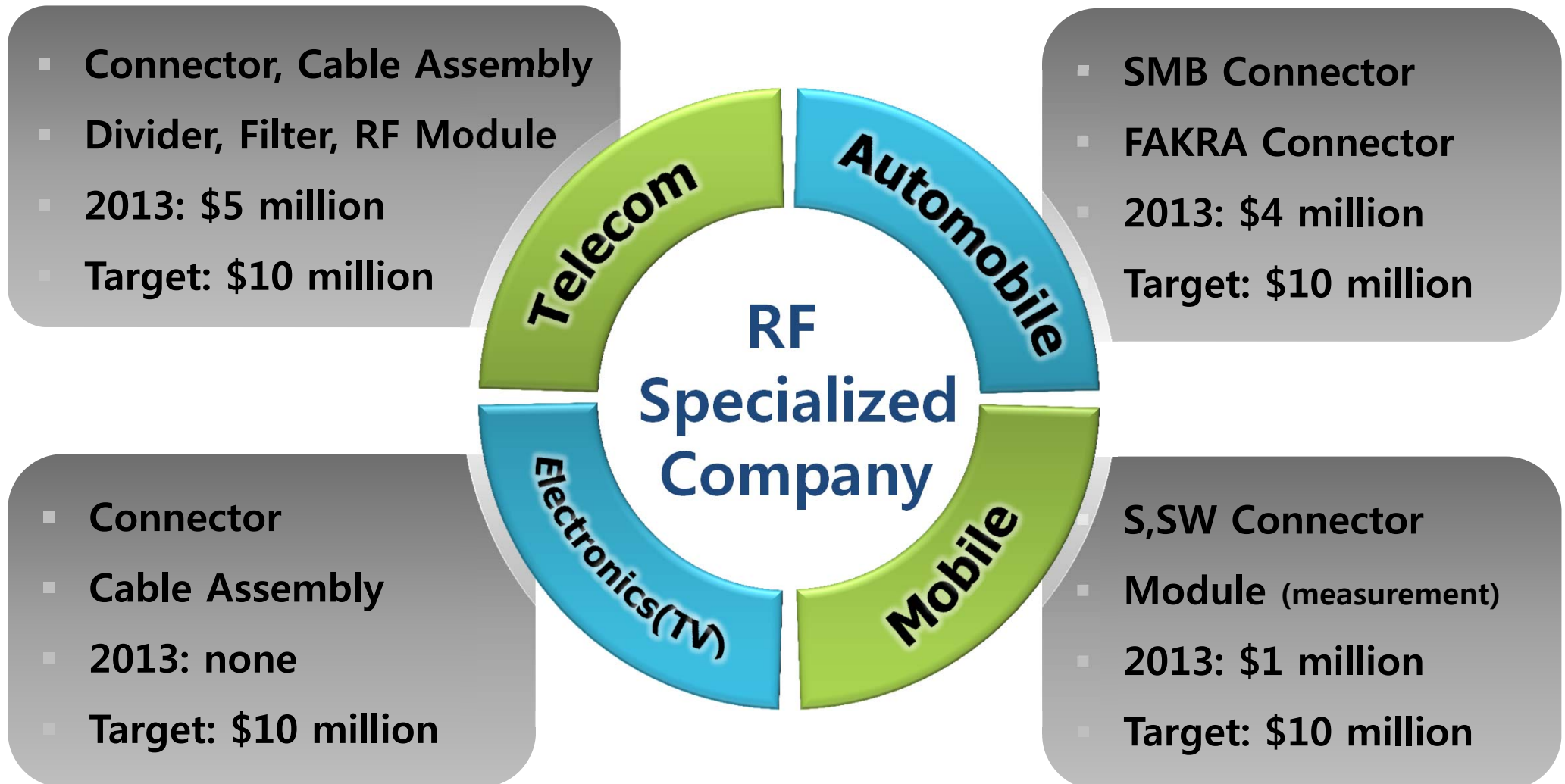
# Company Overview

## Organization Chart



# Company Overview

## Target Market & Sales in 5 years.





# Company Overview

## Certificates, patents



-TS16949 Automotive quality system  
-ISO14001 Management system standard



# Company Overview

## Company View

Area

**1090** $m^2$

Floor Space

**1980** $m^2$



# Company Overview

## Company view

CNC

330m<sup>2</sup>



# Company Overview

## Equipment

**CNC**



**Cleaner**



**Heat Treatment**



**Polishing machine**



**Inspection Tool**



**Dust Collector**



. KJ produce/process the parts used in the connector.



# Company Overview

## Company view

Assembly  
site

660  $m^2$



# Company Overview

## Equipment-Assembly

Cutting  
Machine



Semi-Rigid

Cable  
Stripper



Soldering  
Machine



Body parts

Pin

Bending  
Machine



Marking  
Machine



Press



Hand Press  
Machine



coining  
machine



Connector, Cable Assembly (RG, Semi-Rigid, Feeder),  
Divider, Splitter, Filter

# Company Overview

## Company View

QC



Incoming  
Inspection



Outgoing  
Inspection



# Company Overview

## Equipment-Measurement.

**PIMD**



**Network  
spectrum  
Signal  
Generator**



**Withstanding  
Voltage  
Insulation resist  
ance**



**ROHS**



**Vision  
Measurement**



**Reflow**



**Mating Test  
Machine**



**Guage**



+ Pin/Push Full Gauge, Venire, Micrometer, Electronics Magnifier, Torque Meter, Connecting Devices..



# Company Overview

## Company View

R&D



# Company Overview

## Company View

Warehouse





# Products Portfolios



# Products

## Product Line, Customer



**INDOOR**  
Connector  
Cable Assembly  
Filter  
Arrestor



**OUTDOOR**  
Connector  
Cable Assembly  
Splitter  
Combiner, Duplexer  
Bias Tee  
Arrestor, TMA



# Products

## Product Line, Customer



**Cellphone**  
RF Connector  
**Production line**  
Cable assembly  
Power divider  
Signal Generator

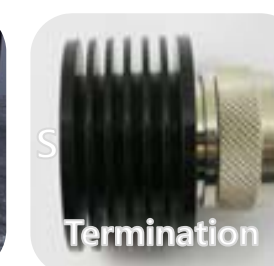
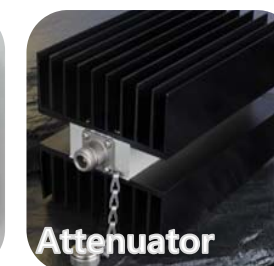
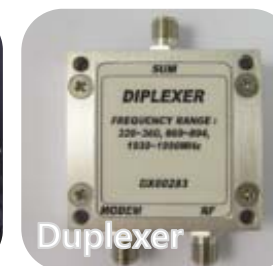


**Automobile**  
SMB, FAKRA



# Products

## Category



### Telecom



- Connector, Adaptor, Cable Assembly, Splitter, Power Divider, Coupler,
- Arrestor, Bias Tee, Switch, Filter, Duplexer, Attenuator, Termination...

### Mobile



- Connector, Adaptor, Cable Assembly
- Power divider, Switch, Signal Generator, Duplexer, Attenuator, Termination...

### Automobile



- Connector, Cable Assembly



# Products

## Connector



MMCX



MCX



SMA



SMB



BNC



TNC



1.0/2.3



F



N



7/16  
DIN



FAKRA



S, SW

- . FAKRA - PCB Type under production
  - CABLE Type under development, 2013
- . Mobile - S, SW connector under development, 2013



# Products

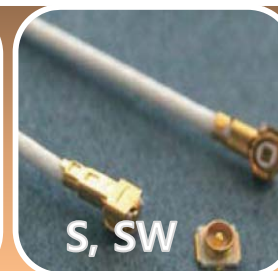
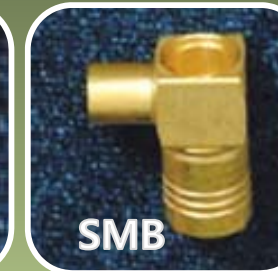
## Adaptor



INDOOR, OUTDDOR

# Products

## Cable Assembly

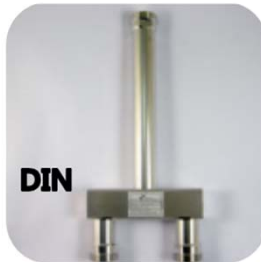


INDOOR, OUTDDOR

# Products

## Splitter

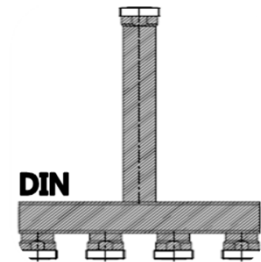
**2WAY**



**3WAY**



**4WAY**



Customer: SK Telecom (Korea), Transit Wireless (USA)



# Products

## Power Divider

2WAY



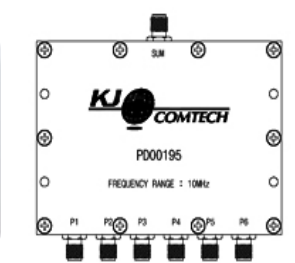
3WAY



4WAY



6WAY



8WAY



12WAY



Power Divider + DC

# Products

## Coupler

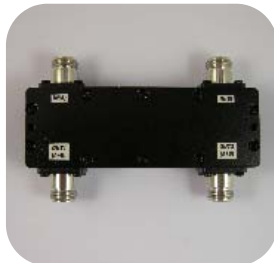
SINGLE



DUAL



HYBRID



+  
ARRESTER



+  
DC BLOCK



+  
BIAS-TEE



OEM

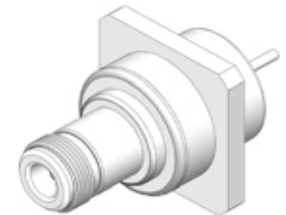
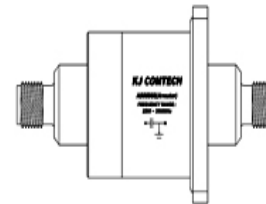


COUPLER + ARRESTER, BIAS-TEE, DC BLOCK, DETECTOR

# Products

## Arrestor

$1/4\lambda$



GAS  
TUBE



GAS TUBE  
SIGNAL



Arrestor+Coupler function.

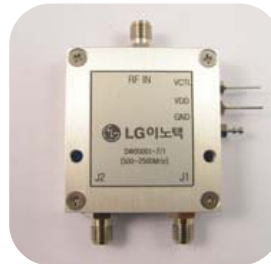
# Products

## Bias Tee, Switch, Signal General

**Bias Tee**



**Switch**



**Signal  
Generator**



Bias Tee + Arrestor, Coupler, Divider, AISG2.0  
Switch– electronics  
Signal Generator – RS232 Standard



# Products

## Filter, Duplexer

Filter

3500 ~  
3555

380~398

995~1005

668~674

1863

2080

Duplexer

458

824 ~  
894

825 ~  
879

830 ~879

830 ~ 879

1940 ~  
2149

Multiplexer

174~240  
2400~2500  
2630~2655

320~350  
824~894  
1940~2150

240~270  
650~670  
1750~1770

Others

HPF  
10 ~ 400

Eliminating  
Wi-Fi  
Interference  
2400 ~ 5000

Customers: LGU+, KT, Softbank, NTT Docomo

# Products

## Attenuator

**Low  
Power**



**High  
Power**



**Variable**



Variable attenuator is under development

# Products

## Termination

**Low  
Power**



**SMA 2W,  
~18GHz**



**N 2W,  
~6GHz**



**QMA 2W,  
~6GHz**



**BNC 2W,  
~ 6GHz**



**7/16 DIN  
2W, ~6GHz**

**High  
Power**



**SMA~50W**

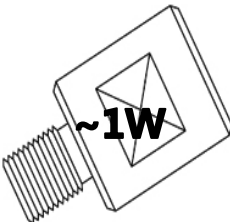


**N~100W**

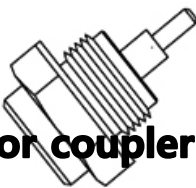


**7/16DIN  
~100W**


**Customize**



**~1W**



**For coupler  
~1W**

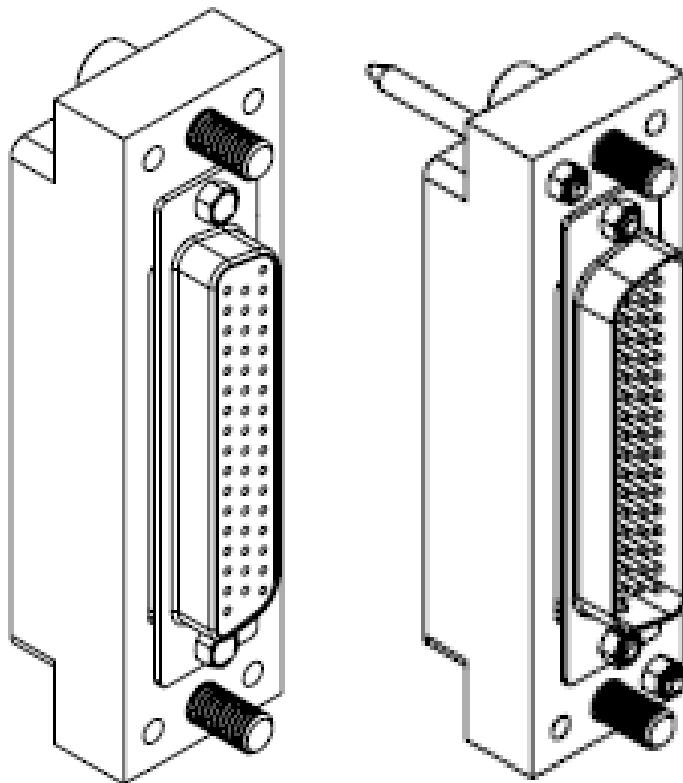


**N~20W  
PIMD**

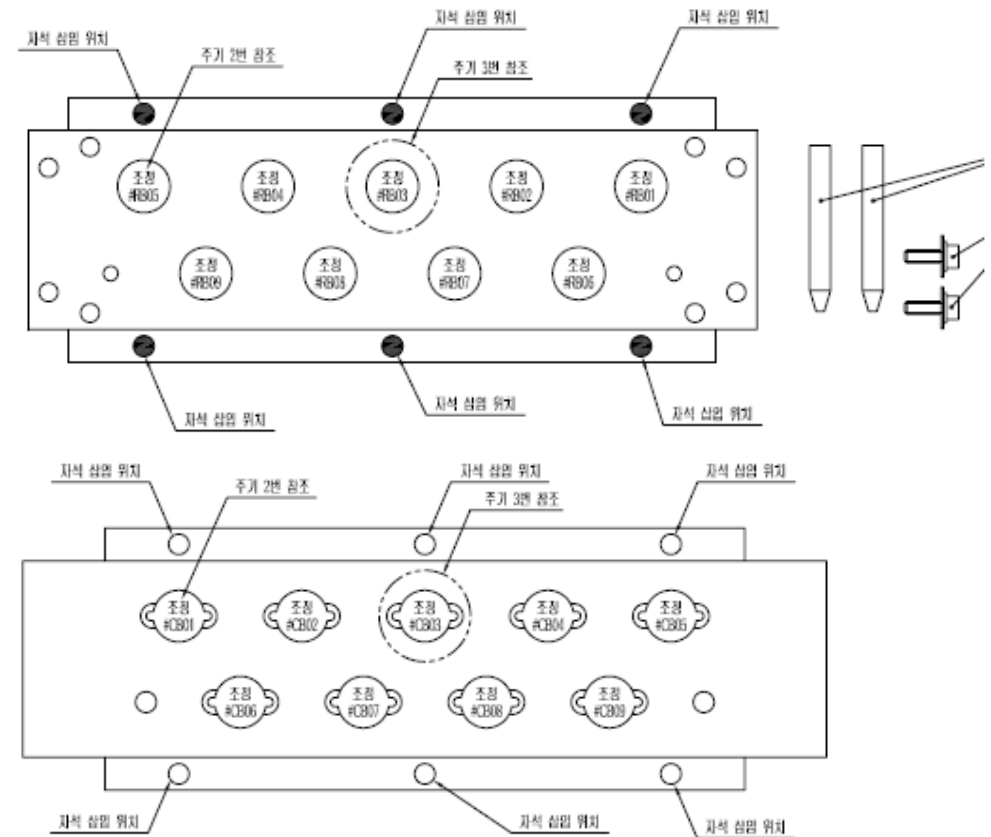
**PIMD**

# Products

## Production Line Jig



D-SUB 50 PIN Adaptor  
Spring, 100,000 times



ROBOT, CART  
Magnet, Support inner  
Connector

# Products

## Summery

### Telecom

Manufacture components used in base station,  
Repeater, Antenna,  
New Development: AMP, TMA

### Automobile

Manufacture more than 5 millions of SMB,  
FAKRA connector each year.  
New Development: Total solution for FAKRA

### Mobile

Manufacture Power Divider, Signal generator,  
Terminator  
New Development: S&SW connector and Cable assembly.

Build a trusting and lifelong partnership with customers and provide them with innovative technologies and services long into the future



**Thank You**