

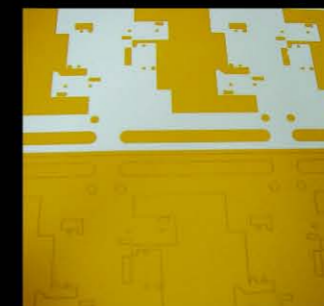
UV Laser Cutter

LPC-DT600

LPC-DT600 laser cutting system was designed for FPCB cutting, glass marking, Sapphire scribing and so on.
This system consists of a UV laser, a scanner, a X-Y-Z stage and a vision.
The Gerber, DXF, and PLT file made in AutoCad can be applied to L&P code which is the processing software.

High Quality & Precision Laser Cutting System

It's Laser & Physics



Cover-layer Cutting



FPCB Body Cutting & Hole Drilling



Si Wafer Cutting & Drilling



Sapphire Wafer Marking & Scribing

**NEXT GENERATION
CUTTING TECHNOLOGY**



SPECIFICATIONS

Laser type	DPSS Nd:YAG
Wavelength	355nm
Pulse repetition rate	Single ~ 70kHz
Power	> 10W
Output stability	< 2% rms
Warm-up time	< 10min.
Spot size	25 μ m
Cooling	Water + Air
Dimension	1500mm(W) x 1550mm(H) x 1300mm(D)
Electricity	220V, 3PH
Weight	< 1500kg
PC	Pentium 4
Monitor	LCD
OS	Windows
Vision	CCD Camera(1024x768), FOV: 4 x 3 mm
S/W	User Friendly Software, Applicable File Format: Gerber, *.dxf, *.plt etc.
X-Y, Z Stage	Stroke 600mm x 600mm(X-Y), 100mm(Z)
	Repeatability $\pm 2 \mu$ m
Scan Head with Automatic Self-Calibration	Offset drift 20 μ rad
	Gain drift 5ppm/K
	Long-term drift over 8hr < 20 μ rad

LPC-DT600



Laser Therapy for

- Vitiligo
- Psoriasis
- Skincoloration

EXL-440, which employs a High Voltage Pulse Trans Module, is a medical device for treatment of vitiligo. The treatment effect is 4 to 6 times faster than conventional phototherapy and effectively induces pigmentation, giving new hope to vitiligo treatment.

In addition, EXL-440 alleviates severe atopic dermatitis, psoriasis pruritus and skin lesions, It also has the effect of improving the stretch marks and the white areas of discolored scars.



System Specification

Laser Medium	Excimer Laser
Wavelength	308 nm
Gas Type	XeCl Mixed Gas
Laser Control	Foot Switch
Operating Mode	Stamp and Continued Mode
Beam Profile	Squared
Laser Power	> 9 W @ Laser Source, > 3 W @ Fiber
Spot Size	20 mm x 20 mm
Pulse rate	440 Hz
Optical Delivery	LLG Fiber
Cooling	Air Cooling
Input Power	220VAC, 12A, 60Hz
Weight	165 kg
Dimensions	500 mm x 970mm x 1,000 mm

Preliminary



Laser Therapy for

- Vitiligo
- Psoriasis
- Skincoloration

Treatment Results



Before

After

Before

After

Preliminary

HVPTM vs Thyatron

	HVPTM Type (EXL-440)	Thyatron Type
Rep. rate	440 Hz	200 Hz
Warm up time	Not needed	More than 10 min.
Life time	Semi-permanent	0.1 B Shot

LASER&PHYSICS Co., Ltd.
www.laser-physics.co.kr

京畿道 龍仁市 處仁區 慕賢面 梅山里 278-4 (郵449-853)
 278-4 Maesan-ri Mohyeon-myeon Cheoin-gu Yongin-si
 Gyeonggi-do Korea (zip. 449-853)
 TEL. +82-31-322-1537
 FAX. +82-31-322-1536
 EMAIL. laser@laser-physics.co.kr

memo

Laser & Physics Co., Ltd. has made the excimer lasers with excellent stability and low price for a long time. L&P's excimer laser with excellent output stability is suitable for a lithography, patterning, ablation, micromachining and medical application.

Also, we can supply all kinds of the excimer laser that consumers need for various applications.

www.laser-physics.co.kr



TYPICAL APPLICATION

- Light Source of Exposure
- Patterning for Flat Panel Display
- Crystallization (LTPS, SLS)
- Laser Ablation
- Micro Machining
- Laser Deposition
- Medical

Parameter	LP-EX-C-01	LP-EX-C-02
Wavelength (nm)	308	
Max Power (W)	10	20
Repetition Rate(Hz)	1 ~ 500	1 ~ 1,000
Beam Size (V x H, mm)	15 x 5	
Beam Divergence(V x H, mrad)	3 x 10	
Power Stability	< 3% standard Diviation	
Chamber Dimension(L x W x D, mm)	900 x 170 x 265	

※ equipment specifications and appearance are subject to change without notice.



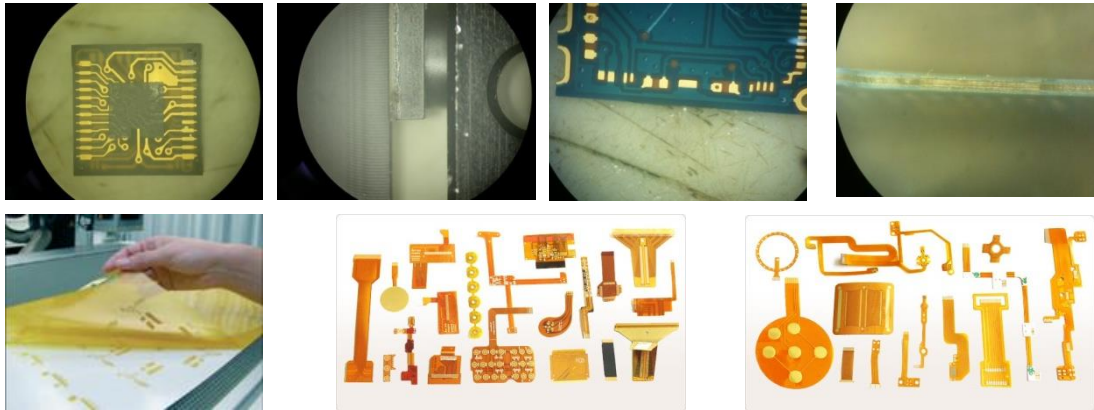
카메라 모듈 커팅 시스템

LPC-DT610

카메라 모듈, PCB, Cu, Cover lay 등을 UV Laser로 절단 하는 장비입니다.

특징

- Optimized Equipment for Camera Module, PCB, Cu Cutting & Drilling.
- Automatic Align & Correction with Vision system.
- Dual Stage for high productivity
- Maximum Cutting Speed : ≥ 600 mm/s (Depends on the material & laser Power).
- [Option] Laser Power Control Unit.
- [Option] Laser Pulse Monitoring Unit.
- [Option] Laser Power Monitoring Unit.



사양



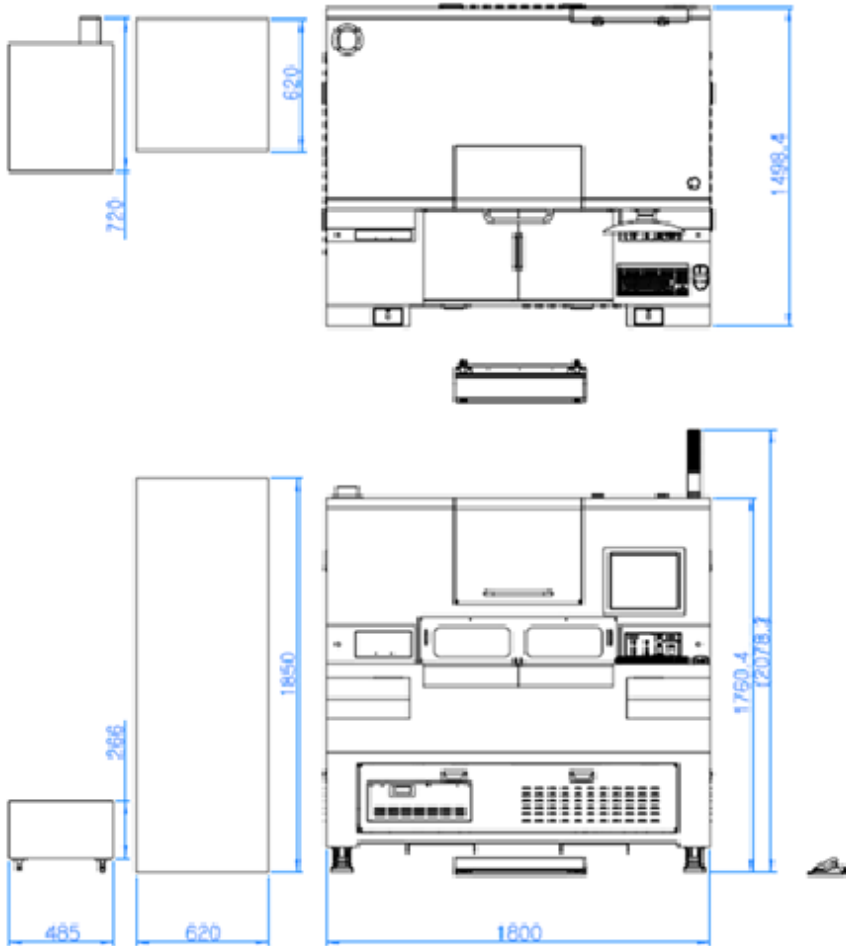
Laser Specification		DPSS UV Laser (20W, 30W, 45W)
Cutting Accuracy		$\pm 20\mu\text{m}$
Vision system		Auto Align & Auto Correction
Utility	Air	5 kg/cm ³
	Suction	510 m ³ /h, $\varnothing 100\text{mm}$ Exhaust port
	Electricity	220VAC, 3 PH, 50/60Hz, 10 kW
Applications		<ul style="list-style-type: none"> ■ Camera Module Cutting ■ PCB Cutting ■ Cover lay Cutting ■ Via Drilling Applications

※ 설비 사양 및 외관은 별도 예고없이 변경될 수 있습니다.



카메라 모듈 커팅 시스템 LPC-DT610

Dimension (mm)



LASER&PHYSICS Co., Ltd.

www.laser-physics.co.kr

본 사: 경기도 용인시 처인구 백옥대로 210번길 31.
TEL. +82-31-322-1537 / FAX. +82-31-322-1536
EMAIL. laser@laser-physics.co.kr

1공장: 경기도 용인시 처인구 모현읍 곡현로 619번길 46-14.
TEL/FAX +82-31-322-0647

memo