

SEBOTECH

| A Total Offshore Technology &
Engineering Solution Provider |

Contents

01

CEO Message

02

Our History

03

Management Philosophy
& Quality Management

- Core Values
- Management Philosophy
- QHSE Management
- SEBOTECH Organization
- Financial Statements of SEBOTECH

04

Our Services

- Engineering
- Project & Quality Management
- Fabrication & Assembly
- Delivery & Installation

05

Our Products

- Helideck Solutions (Aluminum and Steel)
- Aluminum Product Solutions
- Flare Boom & Flare Tower Solutions
- Hatch Cover & Door Solutions
- Wall & Shielding Solutions
- BOP Drilling Support Equipment
- Material Handling Equipment (MHE)
- Marine Product & Special Equipment

06

Major References /
Portfolio

07

Our Customers

08

Our Facilities



CEO Message

Dear Customers,

Thank you for your interest in SEBOTECH.

SEBOTECH is a distinctive company with distinctive capabilities. Since its acquisition by Haeduk Powerway, SEBOTECH has and is still undergoing numerous changes and developments. It is strengthening its core capabilities and competencies while supplementing and improving its shortfalls, all for the purpose of becoming even more distinctive than before. SEBOTECH has turned a page in its history and is now on the path of becoming a unique company.

As such, SEBOTECH do not simply provide global products and services from a simple supplier perspective but, work to discover the "true" needs of our customers by providing successful solutions involving product and technological development, and incorporating different levels of our organization to deliver successful results. As a testimony of such work ethic and approach, SEBOTECH is the only company whom has been awarded the construction of a welded type aluminum helidecks, such a product is a first in Asia and is unmatched by our competitors.

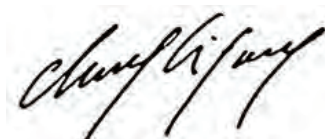
SEBOTECH merges experience and expertise with intelligence. Our project team works to provide our customers with up-to-the-minute information & communication, valuable insights, and innovative products & solutions. The leaders who drive our company are experts at collaborating and guiding our customers through today's complex engineering, fabrication, and installation environment. In addition, our R&D Center continuously provides our customers value by developing product innovations and technological advances.

SEBOTECH promises to provide extensive services for each and every single customer, for any project and products, anywhere around the world. We are dedicated and committed to successfully create value for our customers and to succeed with our customers. We believe our existence and growth depends not just on our success but, the success of our customers as well.

The landscape of the business is changing. We believe SEBOTECH is and will be the right partner for our customers in this tumultuous environment. We believe we are well suited to serve our customers in their future endeavors. We kindly ask for your continued interest in our company and be part of our growth and success.

Thank you.

Chong, Kiyong
President & CEO



Our History

1990s

- July 1994 Sebo Industry created
- Jul 1999 Name changed to
SEBOTECH
- Aug 1999 Acquired ISO 9001
Certification from DNV

2000s

- Jul 2000 Acquired CE Mark(air hoist, air balancer, KH track system)
- Nov 2001 Listed as vendor of Hyundai Heavy Industries
- Dec 2001 Listed as vendor of Hanjin Heavy Industries
- Feb 2002 Listed as vendor of Hyundai Mipo Dockyard
- Sep 2002 Listed as vendor of Samsung Heavy Industries
- Mar 2003 Listed as vendor of Daewoo Shipbuilding & Marine Engineering
- Aug 2003 Established SEBOTECH R&D Center
- May 2004 Acquired S-Mark
(from Korea Occupational Safety and Health Agency)
- Sep 2007 Acquired certification for A30 fire rated Weathertight Hinged Door
- Dec 2007 Acquired certification for A60 fire rated Pneumatic Sliding Door
- Sep 2008 Acquired certification for H60, 120 & J60 fire rated Fire/Blast Wall
- Oct 2008 Acquired CE Mark(electric hoist)
- Apr 2009 Successful independent engineering and fabrication of Aluminum
Helideck
- Sep 2009 Successful independent engineering and fabrication of Burner Boom
- Dec 2009 Acquired ATEX Certificate
(junction box, empty frame proof enclosure, & pendant switch)



2010s

- Mar 2010 Successful independent engineering and fabrication of Moonpool and BOP Spider Beam
- Sep 2011 Successful independent engineering and fabrication of Fire/Blast Wall
- Jul 2012 Successful independent engineering and fabrication of Aluminum Outfitting(Norsok) and Escape Tunnel
- Jan 2015 Acquired by Haeduk Powerway

Management Philosophy & Quality Management

Since our establishment in 1994, SEBOTECH has developed into becoming a leader in the field of offshore engineering and fabrication. We are committed to providing high levels of engineering and manufacturing services to our customers, by developing, designing, and delivering complex and sophisticated offshore products meeting our customer's needs and expectations.

Core Values

Our core values provide the foundation for achieving our vision and succeeding in our business. Our core values enable us to effectively operate our business, ethically conduct our activities, successfully achieve our objectives, and differentiate ourselves from our competitors.



1 Customer First

Putting the customers first enables us to create the value which governs our business. Providing products and services which meet customer's needs and expectations, and engaging our customers to quantify such needs and expectations enables us to guarantee customer satisfaction and consequently develop long-term relationships with our customers. Customer's demands are the driving forces behind our development and we believe our success largely depends on our customer's success.

2 Successful Quality

Successful quality means not only to provide flawless quality products and services but, to provide such quality products and services with an economic impact. We strive to provide such value by focusing on accuracy, exercising preventive thinking & actions, and upholding zero defect standards. In addition, our practice to proactively listen to our customer's needs, to quantify project requirements, to improve and customize our work processes enable us to minimize costs and maximize economic gains in order to enhance the value offered to our customers.

3 Collaboration

We focus on collaboration when engaged and working on projects. Such collaboration is made possible when acknowledging personal diversity, emphasizing a one culture work environment, and demanding effective teamwork. Furthermore, we believe in developing inter-departmental supporting relationships and establishing collaborative work models between internal teams and external customer teams in order to enhance collaboration efforts. Last, we believe in proactive sharing of information and constant communication which are key to realizing such a collaborative practice. We believe collaboration enables us and our customers to realize success and exceptional outcomes.

4 Integrity & Transparency

Integrity is one of the most important and oft-cited value yet, remains the keystone of our operational philosophy. First and foremost, we are committed to making the right decisions and taking the right actions in our daily activities in every moral, ethical, and legal aspect. Second, each employee is held accountable for their actions and all employees demand the same integrity standard from each other. Last, we vow not to compromise our core values in order to obtain results. We believe our integrity and transparency standards define who we are and enables us to develop a safe work environment, as well as trustworthy internal and external work relationships.

5 One & Global

We strive to live a culture based on solidarity, enabling us to behave as one company and one organization, looking towards the market with a global perspective. We believe we can realize such a culture by demanding each and every employee to uphold and live by our core values, to respect diversity, and to establish a collaborative work environment. In addition, we demand each and every employee to continuously self-develop himself/herself in order to broaden our global perspective.

6 People First

Our business is based on people and as such we put great emphasis and value on our employees. This core value emphasizes the recruitment, retaining, and development of high caliber and motivated people. To successfully realize such emphasis, successful establishment of a people centered work environment is key. First, morale building by providing an ever improving work environment provides the basis. Second, we believe our people management system must focused on develop each individual's career path. Last, we believe knowledge gathering, managing, and transferring is critical in providing our employees a platform for growth and development.

Management Philosophy

Focus on the Basics	Enhance our basics and strengthen our work foundation.
Customer First	Become a customer centric organization.
Pursuit of Perfection	Provide world-class products and services.
Pursuit of Growth	Seek growth opportunities in all aspects of our business.

QHSE Management

1 Quality Policy

- Deliver only products and services that meet the required delivery date and standards
- Ensure flawless quality by means of preventive thinking and actions
- Enhance teamwork, build rhythm in our operation, and implement a constant monitoring system
- Enhance competitiveness through unparalleled technology and production methods
- Create a work environment which puts the safety of our people first

2 HSE Management

- Health, safety and environment management operated in accordance with OHSAS 18001 and ISO 14001
- Conduct a monthly safety awareness program
- Maintain regular inspection of safety gears
- Execute regular inspection of facilities and equipment
- Ensure regular inspection of firefighting equipment
- Remove disruptive elements from the workplace followed by regular safety inspections
- Maintain annual medical checkups
- Conduct health awareness programs



ISO9001



ISO14001



ISO/TS29001



OHSAS18001

3 HSE Policy Statement

Our long-term business success depends on our ability to continually improve the quality of our products and services while ensuring the safety of our people and the environment.

Emphasis must be placed on ensuring human health, operational safety, environmental protection, and quality enhancement. This commitment is in the best interests of our customers, our employees, and our contractors. SEBOTECH demands our employee's and contractor's commitment and accountability towards HSE adherence and compliance. Management has a leadership role in the communication and implementation, as well as ensuring compliance with, HSE policies and standards. SEBOTECH is committed to:

- Protecting the health, safety, and security of our employees at all times and strive to eliminate all accidents
- Meeting customer requirements and ensuring continuous customer satisfaction
- Applying our skills to all HSE aspects in the design and production of our products and service offerings
- Setting HSE performance objectives while continually improving processes, services through an effective HSE management system
- Strive to eliminate all environmental incidents through pollution prevention, reduction of natural resource consumption and emissions, and the reduction and recycling of waste
- Openly communicate with stakeholders to ensure understanding of our HSE policies, standards, and programs

This Policy Statement shall be regularly reviewed to ensure ongoing suitability.

The above commitments are additional to our standard SEBOTECH obligations, as well as all applicable laws and regulations.

We value our HSE Policy as it enables us to minimize all losses and add value to our customers.

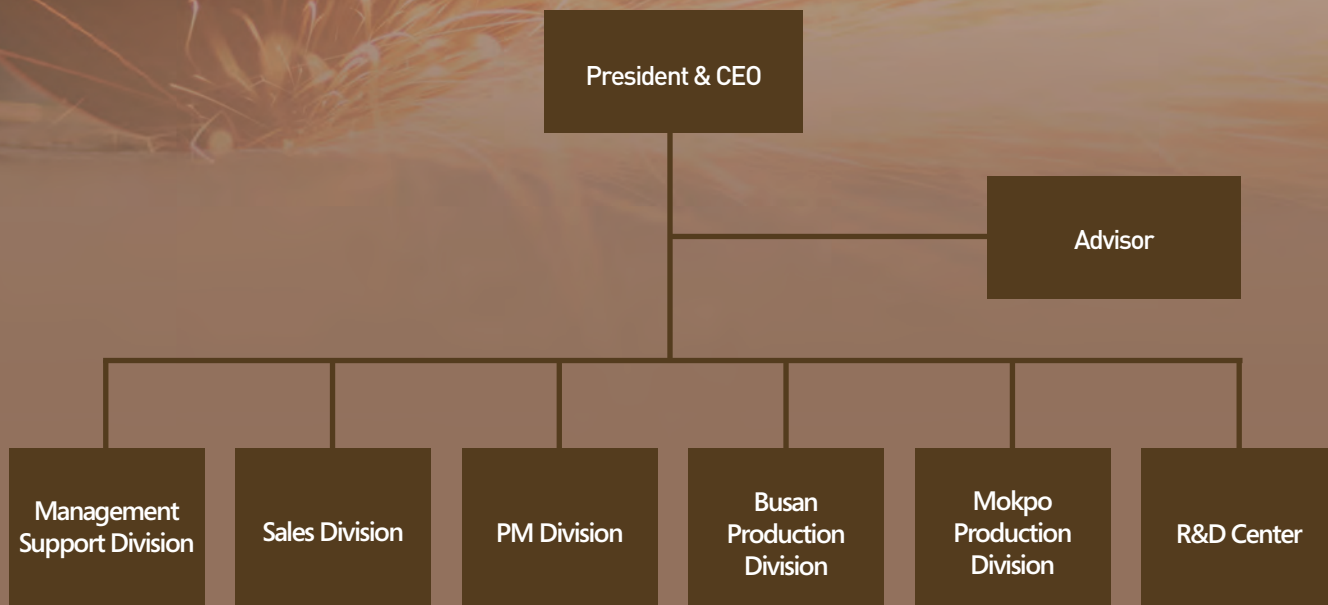
4 Achilles JQS

SEBOTECH is a qualified supplier in Achilles JQS-A Joint Qualification System for suppliers to the oil industry in Norway and Denmark.

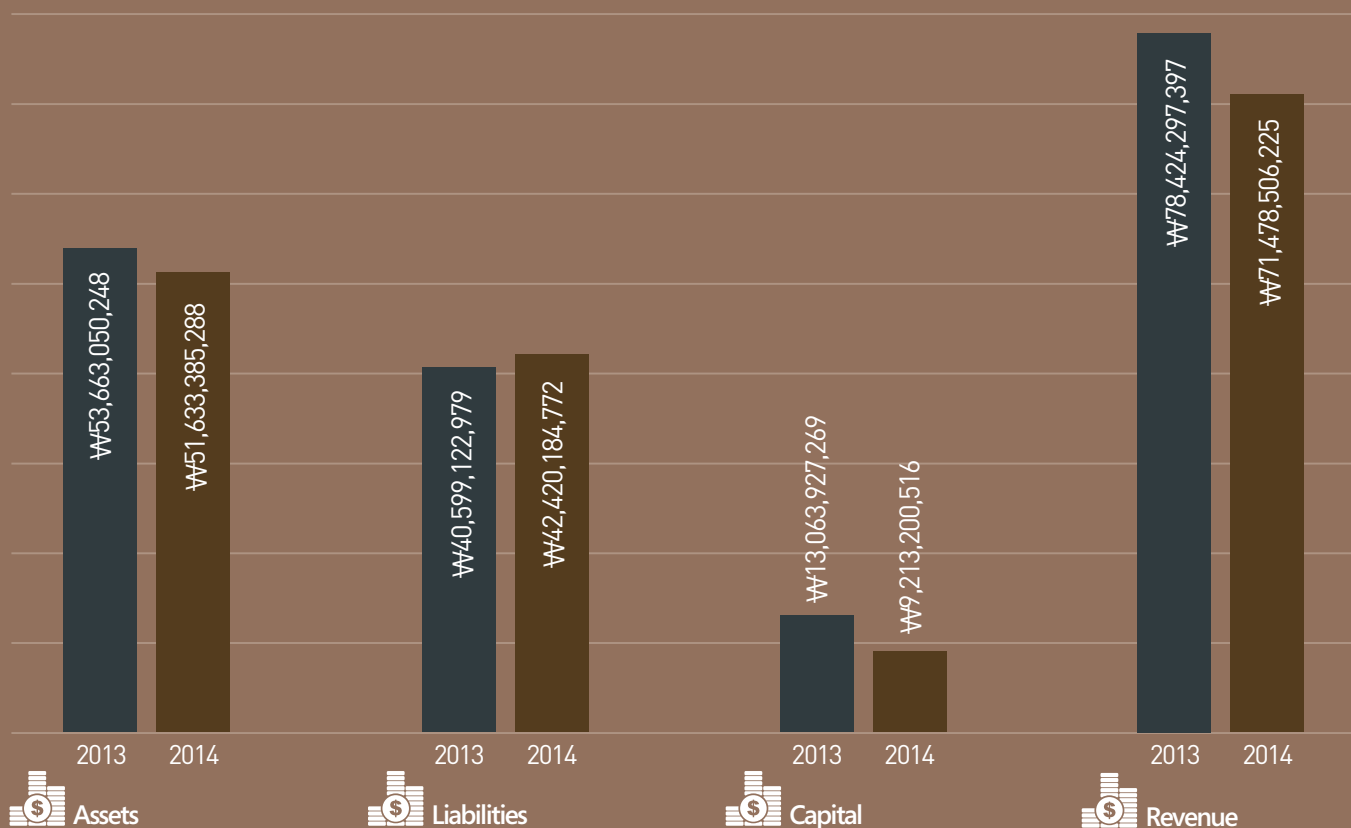


Achilles Id. 27793

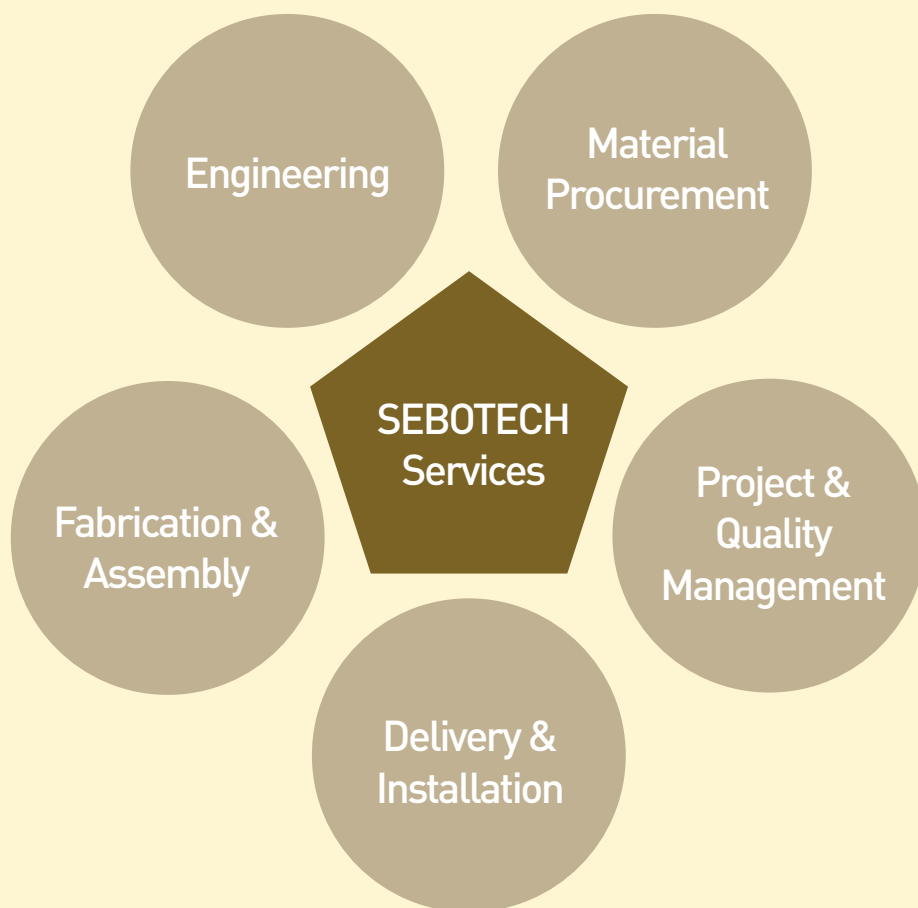
SEBOTECH Organization



Financial Statements of SEBOTECH



Our Services



SEBOTECH's strengths

SEBOTECH provides high quality products and services based on a high level of understanding of offshore projects and requirements.

Engineering

Project & Quality Management

Fabrication & Assembly

Delivery & Installation

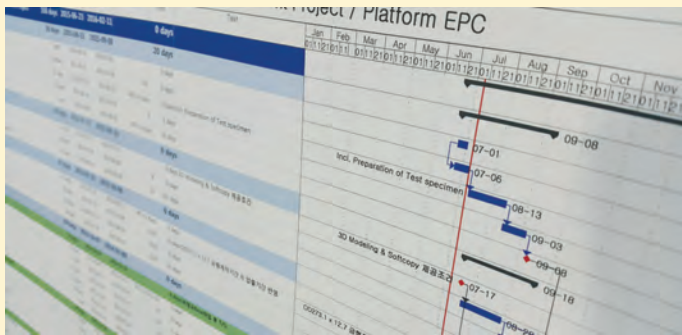
1 ENGINEERING

Our proprietary experiences and knowledge, combined with our continuous technology development, enable us to engineer and design state-of-the-art products and equipment for our customers.

Our engineering competencies provides engineering, procurement, fabrication and construction of major energy infrastructure facilities. We design and develop small to large and complex structures for upstream and downstream process packages for the oil and gas industry. SEBOTECH specializes in engineering projects and its associated services, which span from conceptual design to structural analysis to producing of shop drawings with experiences in both green and brown fields. The company's internal systems, products, and services provide extensive capabilities and experiences to customers. Our primary objective is to engage complex engineering projects in multiple engineering disciplines such as structural, mechanical, electrical, piping, and outfitting.

2 PROJECT & QUALITY MANAGEMENT

Project and quality management teams tailored to individual projects, combined with SEBOTECH's project management system, enable us to ensure project, quality, and product excellence.



We offer a specific set of practices designed to accomplish a singular goal. We have highly experienced project team who are ready to engage in any complex project while utilizing existing infrastructure and interfacing with multiple parties.

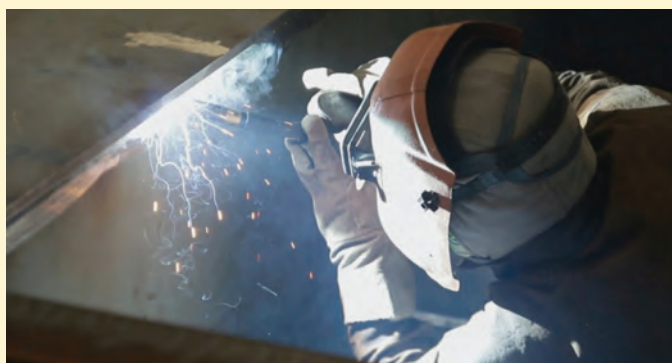
In order to help our customer we navigate and manage with respect to scope, schedule, issues, and budget. Our competency also include our ability to implement an efficient project management platform which allows for effective project management and comprehensive yet detailed reporting on project.

3 FABRICATION & ASSEMBLY

Our production facilities can meet diverse product specific specifications and material requirements, as well as fabricate highly sophisticated products and equipment. SEBOTECH employs a highly skilled and specialized workforce powered by a wide range of WPSs.

	Material		Welding Process	Applicable Code	Welding Position	Approved by
Structure	Aluminum	5083 H32 6082 T6 5083 H32 + 6082 T6	GMAW GTAW	AWS D1.2 DNV-OS-C401 Norsok M102 ISO 15614-2	1G, 2G, 3G, 4G, 6GR 1F, 2F, 3F, 4F	DNV GL / ABS / BV / LR
	Carbon Steel	SM 490YB S355J2H AH/DH/EH36 API 5L X52	SMAW FCAW GTAW SAW	AWS D1.1 DNV-OS-C401	1G, 2G, 3G, 6GR 1F, 2F, 3F, 4F	DNV GL / ABS / BV / LR
	Stainless Steel	SUS 316L Duplex + SUS 316L	GTAW	AWS D1.6 DNV-OS-C401 LR Part 2	1G, 2G, 3G, 4G 1F, 2F, 3F, 4F	DNV GL / ABS / BV / LR
Piping	Carbon Steel	A106Gr.B API 5LX52	GTAW FCAW	ASME Sec. IX	6G	DNV GL / ABS
	Stainless Steel	SUS 316L	GTAW	ASME Sec. IX	6G	DNV GL / ABS

SEBOTECH fabrication practice is a leading provider of offshore solutions. Our fabrication competencies encompass all materials from aluminum, to stainless steel, to carbon steel and all types of products from simple doors to complex structures. Our production facilities can meet diverse products



specifications and material requirements, as well as fabricate highly sophisticated products and equipment. We deliver consistent quality with uninterrupted production. Our production staff is comprised of a highly skilled and experienced workforce specializing in specific material and product ensuring a high product and quality standard. We have multiple production sites located in the Busan, Hwajeon and Mokpo area.

4 DELIVERY & INSTALLATION

Efficient and reliable delivery and installation are key to a successful construction project. Our experienced teams are on standby and ready to deploy to any site in order to complete difficult task and projects. Our field service personnel are experienced in working and interfacing with multiple parties while managing all aspects of the delivery/installation. Our established and proven practice enables us to quickly mobilize and deploy an effective team while maintaining and generating economical value to the customer. Our competencies span from delivery, to installation, to repair services.

Our Products

Helideck Solutions (Aluminum and Steel)

SEBOTECH is one of the leading aluminum and steel construction companies. With 21 years of experience in complex structures, SEBOTECH has been supplying aluminum and steel helidecks for the oil and gas industry. As a leading provider of fully-equipped Helideck Solutions, SEBOTECH is committed to continually improve and develop new technologies in order to ensure the safety of our products.

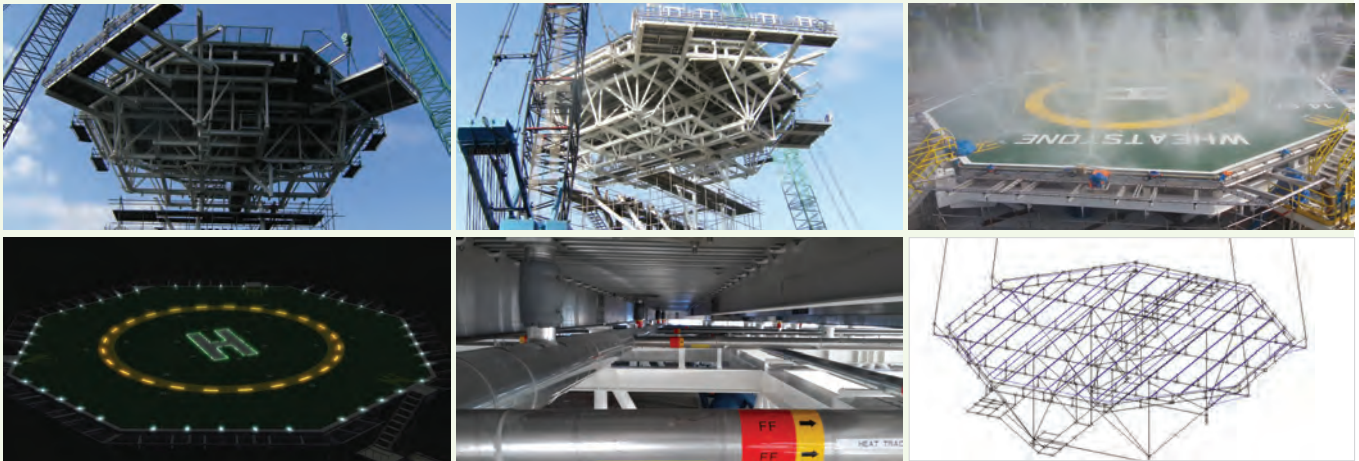
SEBOTECH integrates such commitments in our engineering, design, fabrication, delivery, testing & commissioning activities.



Key Features of SEBOTECH Helideck Solutions

SEBOTECH Helideck Solutions include:

- Turn-Key approach (including engineering, fabrication, delivery, and installation), including steel substructures
- Firefighting Systems with enhanced capabilities and features
- DIFF Systems which allow rapid response to any unexpected fire
- Lighting Systems in accordance with current rules and requirements
- Heat Tracing Systems for extreme weather conditions
- Lifting & Sea-Fastening analysis



Engineering and fabrication that puts safety first

SEBOTECH Helideck Solutions are designed and fabricated with the safety of its users and operators in mind. First, our Helideck Solutions provide enhanced Firefighting Systems to ensure a flawless and rapid response to any emergency events, accidents, or other helicopter related emergency situations. Second, our Helideck Solutions are also equipped with our Lighting Systems which ensures high visibility and safe operation of helicopters at night. That being said, our Helideck Solutions focuses on the safety of the helideck's most critical event: The landing and take-off of aircrafts. Our focus is to provide a full featured solution capable of ensuring the safety and lives of its users.

Never-ending pursuit of safety

As a leading provider of Helideck Solutions equipped with comprehensive safety features, SEBOTECH is dedicated to continuously developing and improving our safety systems.

High level of product understanding based on extensive project experience

SEBOTECH offers Helideck Solutions which fully comply with CAP437, classification standards, client requirements, and other relevant standards and requirements.

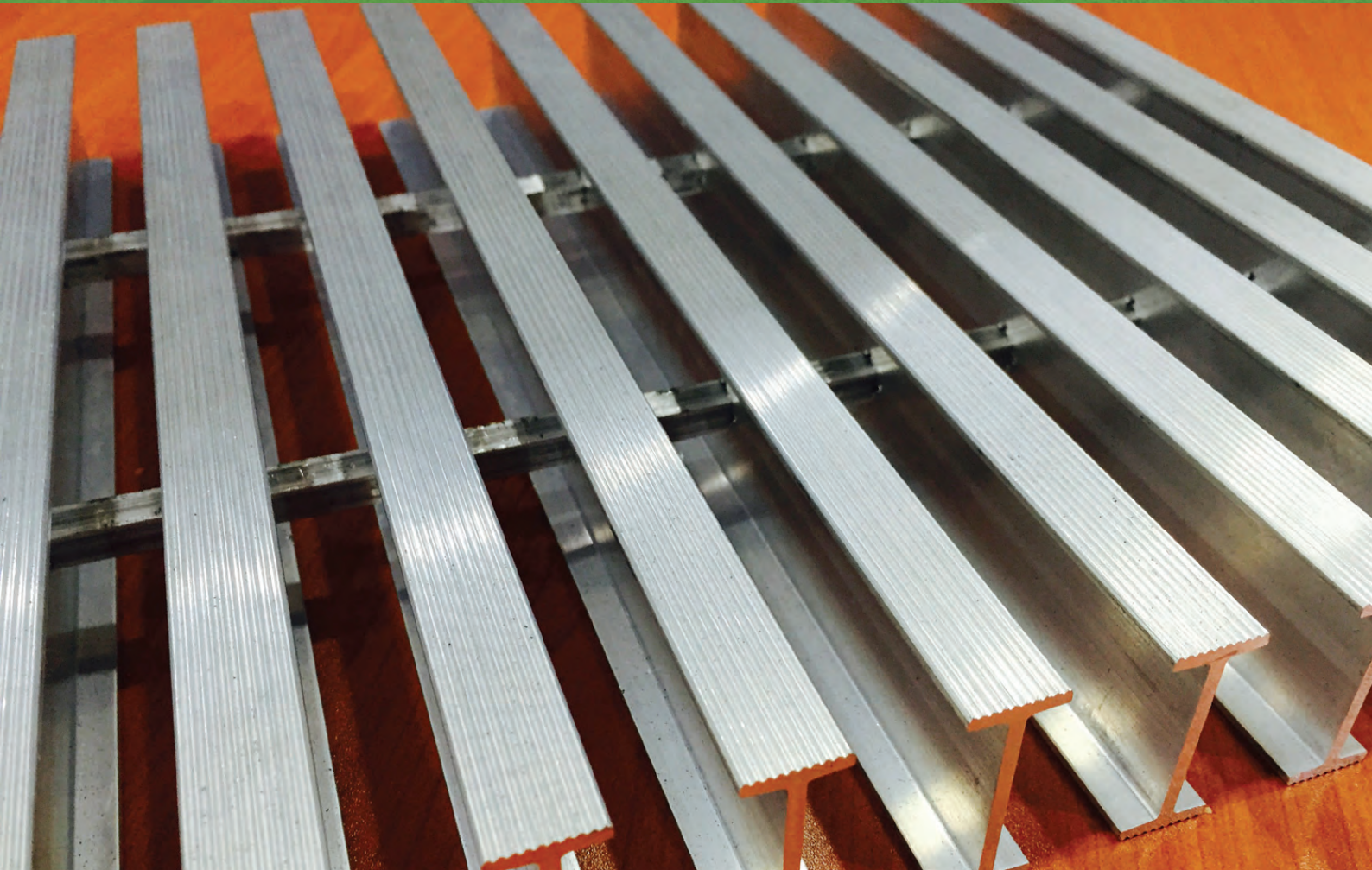
- Size : In accordance with CAP437 & Client requirements
- Regulations:
 - U.K. Civil Aviation Authority, CAP 437 latest version
 - BS8118,"The structural use of aluminum"
 - Owner's Standards
 - Classification Standards



Aluminum Product Solutions

Stair Towers or Outfitting includes walkways, stairways, ladders, platforms, handrails, and other elements for guiding movement, or in the event of an emergency, evacuation of a ship's personnel.

SEBOTECH Aluminum Product Solutions are engineered and fabricated with deep understanding of the material and extensive experiences in order to provide the most value added solutions to our customers.



Eco-friendly aluminum products making ships lighter

Aluminum products are fabricated in our dedicated aluminum workshops focused on making products highly resistant to corrosion and light enough to contribute to weight reduction of ships and structures. Our light-weight aluminum products greatly contribute to weight reduction of offshore topside structures and onshore elevated structures which, translates to savings in the overall structure, while the non-corrosive properties of aluminum greatly contributes to reduction in maintenance costs.

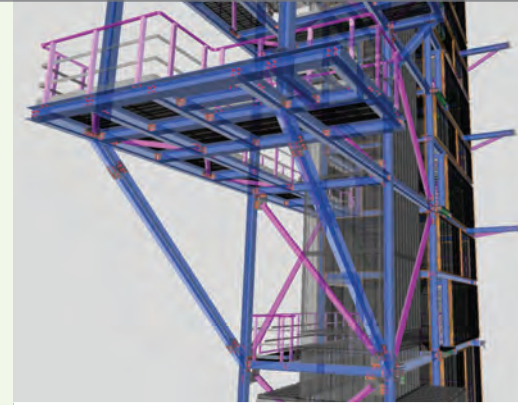
Aluminum products are engineered and fabricated according to project specifications, NORSOK Standards, NMD Rules, and the specific requirements of the ship owner.

- Aluminum Stair Tower Systems
- Aluminum Handrail/Step/Grating/Ladder Systems
- Aluminum Corrugated Wall Systems
- Aluminum Antenna Towers

Complete and prompt fabrication based on in-depth understanding of aluminum materials

The material and spectrum of SEBOTECH's aluminum products are summarized in the table below.

Item	Description(Possibility)
EN AW 5XXX series Rolled plate (Hot & cold)	<ul style="list-style-type: none"> • Available Document DNV-GL. BV. ABS. LR Certification. MDS-01 Mill Certification. • Product code : Chemical composition will be reference En 573-3. rolled product dimensional tolerances are En 485-3, EN 485-4, ANSI H352(other sizes and thickness and tighter tolerances added request) • Lead time : special spec is 3~5months(different to delivery method) stock item is 7~10days to ready. • Notice : Marine product according to EN 10204 3 2 And according to ASTM B928 basic option Max thickness is 40~50mm(description is added requested) • Special spec : MDS product item, non-use temper item, thick item and ETC.
A6XXX series Aluminum alloy Extruded shapes	<ul style="list-style-type: none"> • Available Document : DNV-GL, KR Certification MDS-03, MDS04 Mill Certification. • Product code : Chemical & mechanical composition will be reference En 755. dimensional tolerances are ANSI H35 2 and JIS-H4100 • Lead time : existent mold item is 10~20days special inspection and large item is 2~4months. • Notice : Class certification is added option. <p>All product according to EN 10204 3 1 And according to ASTM B221M basic option extruded Max thickness is added request</p> <ul style="list-style-type: none"> • Special item : DNV-GL, MDS item 6082





Flare Boom & Flare Tower Solutions

Flare booms (also known as burner booms) are used on offshore platforms to burn unnecessary gas & oil extracted from oil & gas wells or to test extracted oil & gas for productivity and economic viability. Unnecessary oil & gas extracted from a well are guided through piping to the flare tip located at the end of the structure for burn-off. Flare booms typically consist of 6 to 10 piping lines and a water shield is installed to protect personnel and equipment from flare and heat.



SEBOTECH's Flare Boom Solutions are engineered for safety and functionality

- Enhanced Shielding via SEBOTECH's proprietary multi nozzles with wider water spread design
- Pre-swing testing after assembly of the boom structure and system (prior to mounting)



Products specifically designed to meet customer requirements

SEBOTECH is capable of supplying various types of boom structures (including cantilevers, swan necks, king posts, and flare towers) to meet specific customer project requirements.

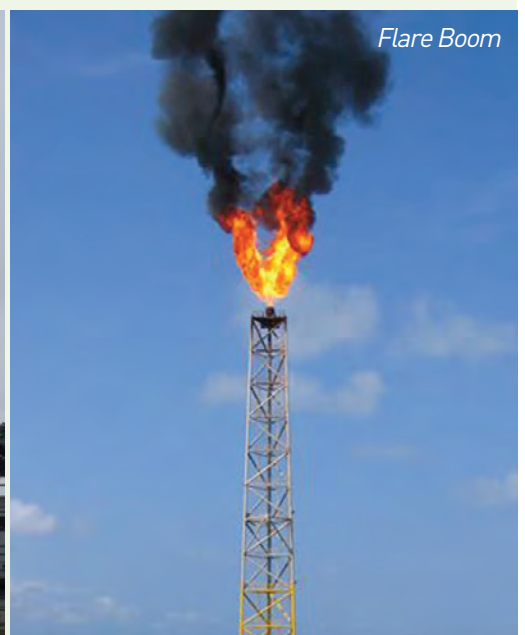
We provide a wide range of additional functionalities upon customer request:

Boom Type : Cantilever/Swan Neck/King Post Mounted, Flare Tower

- Rotation System : operated by Hydraulic cylinder system
- Regulations
 - Relevant classification standards
 - NACE MR01-75
 - API RP521/520
 - ASME B31.3



Swan Neck



Flare Boom

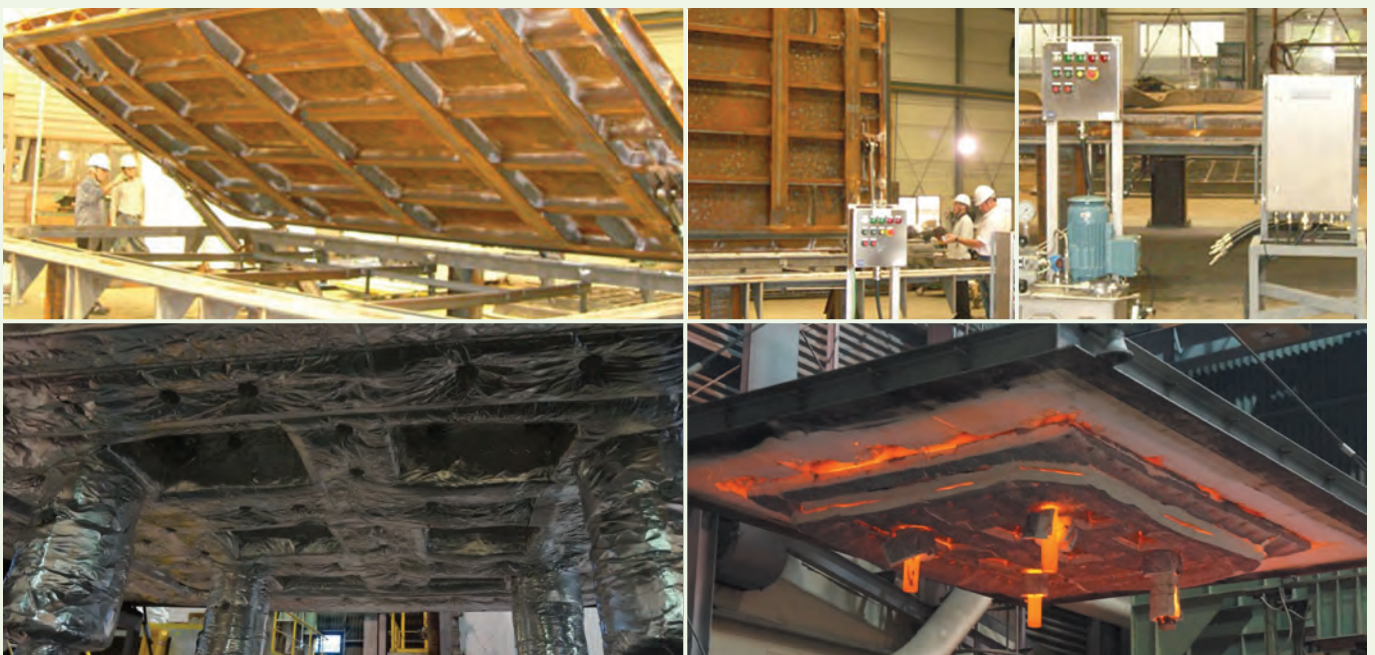


Hatch Cover & Door Solutions

Diverse types and customized configurations to suit different needs

Hatch Covers & Door Solutions are located at many points of a vessel aiding the movement of personnel and equipment. Due to the wide application across a vessel, Hatch Covers & Door Solutions require customization and configuration based on their usage, applicable rules & regulations, and mode of operation.

We provide Hatch Cover & Door Solutions from engineering to delivery including operation test and fire/tightness test depending on customer's request.



SEBOTECH Hatch Covers & Door Solutions customized for a wide range of applications:

Regulation Type

- Existing Certifications applicable upon customer request.
(Various fire ratings, product types, materials, and class certification)
- New Certifications can be acquired from any class pending customer's request.

Operation Type

- Size : According to user requirements
- Manual
- Hydraulic
- Electric

Constriction type

- Watertight
- Weathertight
- Gastight

Fire Rating

- A0/A30/A60
- H0/H60/H120
- J120

Roll-up door System

- Size : According to user requirements (Max. 25M)
- Operation : chain hoist motor/hydraulic motor operated
- Control : Remote, centralized or local control





Wall & Shielding Solutions

SEBOTECH offers Wall & Shielding Solutions designed to ensure a protective and safe working environment immune to rain, wind and other weather conditions, as well as fire, explosions and other extreme situations. All SEBOTECH Wall & Shielding Solutions are certified and approved in accordance with the highest standards. Contribute to enhancing the efficiency & safety of field work environment.

Wind Wall and Door Solutions

Wind wall and door solutions provides protection from rain, wind and other weather conditions and enhance work efficiency. They are fabricated in a corrugated form and have diverse applications pending material, thickness, groove depth, and other specifications.

SEBOTECH develops wall systems in all sizes and specifications suitable for both onshore and offshore environments and can be integrated with SEBOTECH's Door System.



Fire/Blast Wall and Escape Tunnel Solutions

Based on SEBOTECH's extensive experience with offshore products, our pre-fabricated modules enable ease of loading, transportation, installation when implementing Fire/Blast Wall and/or Escape Tunnel Solutions.

SEBOTECH continues to engineer and produce innovative structures and systems applicable to various field operating conditions.

- Fire Rating : A60, H60, H120, J60, J120
- Certificated by class : L/R, DNV



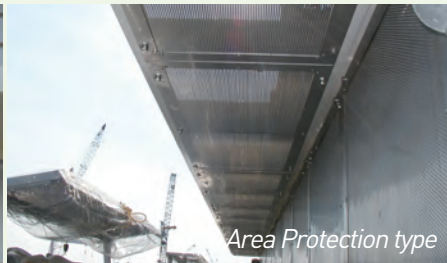
Heat Shield Solutions

SEBOTECH develops radiant heat shield solutions to act as a protective screen for personnel and equipment by reducing the radiant heat flux from different heat sources. Our heat shields are focused to meet the required thermal characteristics, whilst reducing overall weight. The profiled geometry enhances the inherent load carrying capacity and provides sufficient strength to resist with loads over moderate spans without additional stiffening.

- Lighting Type
- Instrument Type
- Area Protection type



Area Protection type



Area Protection type



Lighting type



Instrument type

Key features of Wall & Shield Solutions

The key features of SEBOTECH's Wall & Shield Solutions include:

- Ease of Installation through pre-fabricated module panel
- Total Integration with doors, outfitting, and E&I equipment
- Affordable & Economic cost management
- Light and effective weight
- Fitted at factory or site location



BOP Drilling Support Equipment

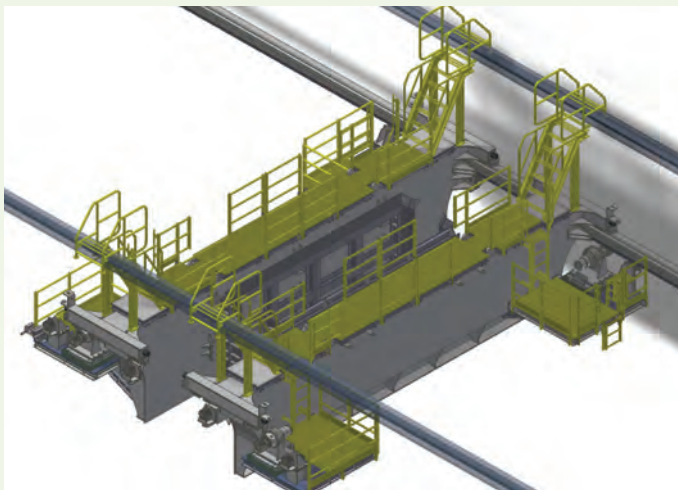
Continuous development and supply of various BOP related products

SEBOTECH supplies a wide range of drilling support equipment for a variety of offshore projects, including BOP spider beams, test stump handlers, lifting frames, sea-fastening devices, and moonpool damping devices. All products and solutions are tested within our shops in order to deliver products whose performance has been fully proven in applicable tests.

BOP Handling Equipment

BOP spider beam

It is used to prevent an impact on the ship for its safe operation when BOP (blowout preventer) is installed on the seabed or retrieved from it.



BOP sea-fastening device

It is used to fasten a BOP for its safe storage when it is not used or after it is used.



BOP test stump handler

Taking the shape of a well-head, this device is used for the pressure testing of a BOP. It has two types: skid and retractable.



BOP lifting frame

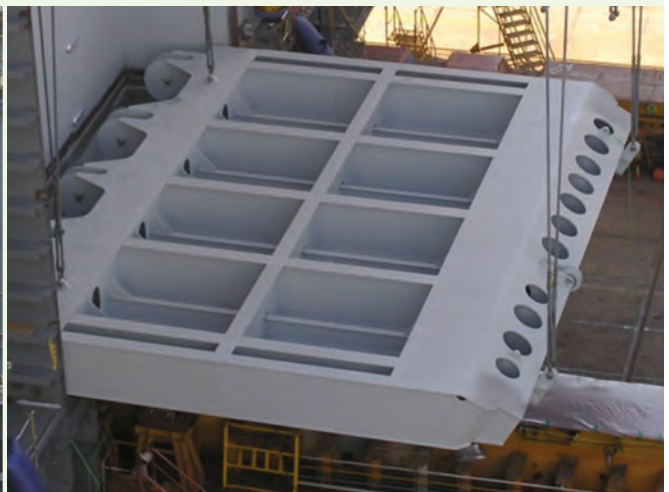
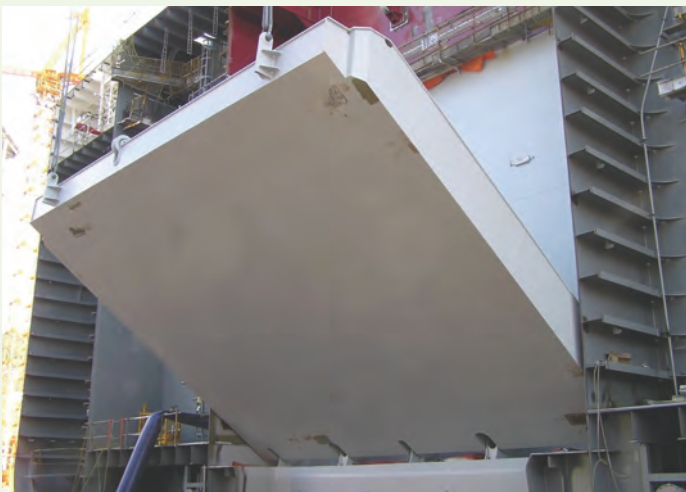
Consisting of a frame, a pad eye, a connecting rod and a link, this is used to lift a BOP.



Moonpool flap and damping device

It prevents the consumption of more fuel due to low speed of the ships caused by the waves in the moonpool.

- Size tailored to customer requirements
- Operation : hydraulic cylinder and chain gear system





Material Handling Equipment (MHE)

SEBOTECH designs a wide range of MHE solutions which meet our customer's demand of high reliability in the most severe conditions. Even under extreme operating conditions, SEBOTECH deployed hoists and cranes systems has proven its performance and reliability. SEBOTECH's complete MHE solutions are applicable and used in many different sectors with a particularly high demand in the offshore industry due to SEBOTECH's ability to meet the highest quality standards.

Monorail Hoists

Electric Type

SEBOTECH's full-featured Electric Type chain hoists have earned recognition for their world class design.

It is composed of highly efficient and economical components including a low headroom aluminum body, fan cooled brake and motor, standard thermal motor protection, and pull-rotor brake in a very economical package.



Air Type

Air Type hoists are ideal for environments where the use of electric equipment is unsuitable.

Key features of SEBOTECH's Air Type hoist include self-cooling motors, variable speed lifting, and load spotting ease.



Manual Type

Manual Type hoists are portable lifting devices easily operated by hand chain. Manual Type hoists are suitable for lifting work in open air grounds and locations with no power supply.



Cranes

JIB Crane

Versatile, efficient, and cost effective, SEBOTECH's 360° rotating JIB Cranes provides flexibility and efficiency while increasing productivity.

Overhead Crane

Overhead Cranes, also called ridge cranes, is composed of a hoist traveling along the bridge between parallel runways and is designed to meet the medium to heavy lifting requirements in the manufacturing process.



Gantry Crane

Gantry Cranes are used where overhead runways are not practical. It has much greater bridge weight than an equivalent overhead crane and are generally used for moving heavy loads, often outdoors.

Suspension Crane & Scissors Lift

Suspension Cranes are typically attached to the existing roof structure. The installation of stand-alone steel superstructures also enables the solution to be flexible to production.

Scissors Lifts are motorized on a railed platform, raised up in order to gain access and enable work on areas with difficult access.

Elephant Crane and others

Elephant Crane comes with permanent wheels for easy transfer under un-laden condition.

SEBOTECH provides complete inventory items and various types of mobile equipments for the oil and gas industry.



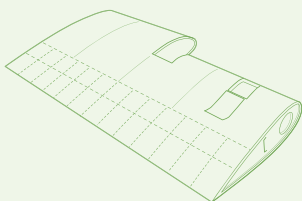
Marine Product & Special Equipment

SEBOTECH develops and fabricates Special Equipment Solutions such as offloading system, vent mast, and bunker mast customized for the oil & gas industry. In addition, SEBOTECH develops and fabricates various Solutions customized for the shipbuilding industry. Our Special Equipment Solutions are developed based on offshore and oil & gas industry standards capable of meeting the high safety standards as well as the extreme environmental conditions. We offer a total solution approach including engineering, production, testing, and delivery.

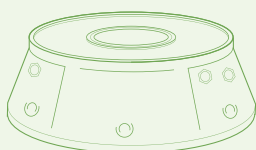
RUDDER ASSEMBLY

Developed and specialized for the shipbuilding industry, the rudder is a device which enables a ship to navigate its direction. It is composed of key parts such as;

- Rudder Blade
(Semi-Spade & Full-Spade types)

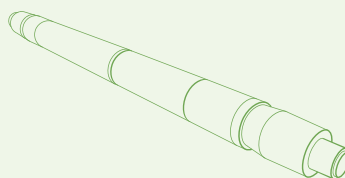


- Rudder Carrier

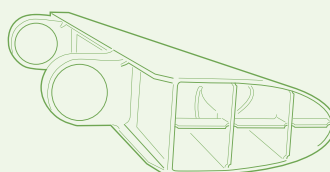


- Stern Tube & Boss

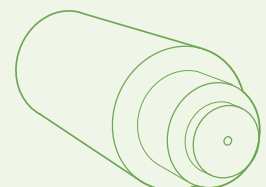
- Rudder Stock



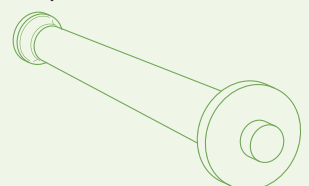
- Rudder Horn or Rudder Trunk



- Pintle



- Propeller Shaft



Major References / Portfolio

Items	End User	Project Name	No.	Type	Shipyard
Aluminum Product Solutions					
Aluminum Outfitting	SONGA	SONGA OFFSHORE CAT.D SEMI-RIG	3031/32	SEMI-SUBMERSIBLE RIG	DSME
Aluminum Outfitting	SONGA	SONGA OFFSHORE CAT.D SEMI-RIG	3034/35	SEMI-SUBMERSIBLE RIG	DSME
Aluminum Stair Tower	DONG energy	DONG HEJRE FIELD FIXED PLATFORM	6053	FIXED PLATFORM	DSME
Aluminum Outfitting	DONG energy	DONG HEJRE FIELD FIXED PLATFORM	6053	FIXED PLATFORM	DSME
Aluminum Stair Tower	STATOIL	STATOIL MARINER TOPSIDES EPC	6056	PLATFORM	DSME
Aluminum Outfitting	STATOIL	STATOIL MARINER TOPSIDES EPC	6056	PLATFORM	DSME
Aluminum Outfitting	STATOIL	GINA KROG TOPSIDES EPCH	6058	PLATFORM	DSME
Aluminum Outfitting	WorleyParsons	HEBRON	Q529	PLATFORM	HHI
Aluminum Outfitting	STATOIL	VALEMON TOPSIDE	7102	PLATFORM	SHI
Aluminum ID Sign Board	STATOIL	GINA KROG TOPSIDES EPCH	6058	PLATFORM	DSME
BOP Drilling Support Equipment					
Moonpool Cover	SONGA	SONGA OFFSHORE CAT.D SEMI-RIG	3031/32	SEMI-SUBMERSIBLE RIG	DSME
Moonpool Cover	SONGA	SONGA OFFSHORE CAT.D SEMI-RIG	3034/35	SEMI-SUBMERSIBLE RIG	DSME
Moon pool Flap	HEEREMA	HEEREMA NEW MONOHULL VESSEL	3402	PIPELAY VESSEL	DSME
Test Stump Handler	TRANSOCEAN	TDD GRS DRILLSHIP	3507/08/09/10	DRILLSHIP	DSME
Moon pool Flap	TRANSOCEAN	TDD GRS DRILLSHIP	3507/08/09/10	DRILLSHIP	DSME
Bop Guiding Spider Beam	ODEBRECHT	ODEBRECHT DEEPWATER DRILLSHIP	3603/04	DRILLSHIP	DSME
Moon pool Flap	ODEBRECHT	ODEBRECHT DEEPWATER DRILLSHIP	3609/10	DRILLSHIP	DSME
Bop Guiding Spider Beam	ODEBRECHT	ODEBRECHT DEEPWATER DRILLSHIP	3609/10	DRILLSHIP	DSME
Moon pool Flap	TRANSOCEAN	TRANSOCEAN DEEPWATER DRILLSHIP	3612/13	DRILLSHIP	DSME
Bop Guiding Spider Beam	TRANSOCEAN	TRANSOCEAN DEEPWATER DRILLSHIP	3612/13	DRILLSHIP	DSME
Test Stump	TRANSOCEAN	TRANSOCEAN DEEPWATER DRILLSHIP	3612/13	DRILLSHIP	DSME
Moon pool Flap	ATWOOD	ATWOOD DEEPWATER DRILLSHIP	3614/17/19/22	DRILLSHIP	DSME
Bop Guiding Spider Beam	ATWOOD	ATWOOD DEEPWATER DRILLSHIP	3614/17/19/22	DRILLSHIP	DSME
Test Stump	ATWOOD	ATWOOD DEEPWATER DRILLSHIP	3614/17/19/22	DRILLSHIP	DSME
Bop Lifting Frame and Link	ATWOOD	ATWOOD DEEPWATER DRILLSHIP	3614/17/19/22	DRILLSHIP	DSME
Bop Sea Fastening Device	ATWOOD	ATWOOD DEEPWATER DRILLSHIP	3614/17/19/22	DRILLSHIP	DSME
Moon pool Flap	VANTAGE	VANTAGE DEEPWATER DRILLSHIP	3615	DRILLSHIP	DSME
Bop Guiding Spider Beam	VANTAGE	VANTAGE DEEPWATER DRILLSHIP	3615	DRILLSHIP	DSME
Moon pool Flap	VANTAGE	ENHANCED DEEPWATER DRILLSHIP	3618	DRILLSHIP	DSME
Test Stump Handler	SONANGOL	SONANGOL DRILLSHIP	3620/21	DRILLSHIP	DSME
Moon pool Flap	SONANGOL	SONANGOL DRILLSHIP	3620/21	DRILLSHIP	DSME
Bop Sea Fastening Device	SEADRILL	WEST EMINENCE	7045/56	SEMI-SUBMERSIBLE RIG	SHI
Flare Boom & Flare Tower Solutions					
Flare Tower System(Burner Boom)	GRUPO R	GRUPO R GVA7500 SEMI RIG	3026/27	SEMI-SUBMERSIBLE RIG	DSME
Flare Tower System(Burner Boom)	PETROSERV	PETROSERV GVA7500 SEMI RIG	3024/28	SEMI-SUBMERSIBLE RIG	DSME
Burner Boom	ODFJELL	ODFJELL GVA7500 SEMI DRILLING RIG	3033	SEMI-SUBMERSIBLE RIG	DSME
Burner Boom Package	PETROSERV	CAROLINA DEEPWATER DRILLSHIP	3605	DRILLSHIP	DSME
Burner Boom	ODEBRECHT	ODEBRECHT DEEPWATER DRILLSHIP	3609/10	DRILLSHIP	DSME
Burner Boom	TRANSOCEAN	TRANSOCEAN DEEPWATER DRILLSHIP	3612/13	DRILLSHIP	DSME
King Post	ATWOOD	ATWOOD DEEPWATER DRILLSHIP	3614/17/19/22	DRILLSHIP	DSME
Burner Boom	VANTAGE	VANTAGE DEEPWATER DRILLSHIP	3615	DRILLSHIP	DSME
Burner Boom	SONANGOL	SONANGOL DRILLSHIP	3620/21	DRILLSHIP	DSME

Items	End User	Project Name	No.	Type	Shipyard
Flare Boom & Flare Tower Solutions					
Burner Boom	ENSCO	ENSCO DS-8	2059/62	DRILLSHIP	SHI
Burner Boom	ENSCO	ENSCO DS-10	2096	DRILLSHIP	SHI
Burner Boom	OCEAN RIG	OCEAN RIG DRILLSHIP #5/#6	7094/96	DRILLSHIP	SHI
Burner Boom	OCEAN RIG	OCEAN RIG DRILLSHIP #7	7103	DRILLSHIP	SHI
Burner Boom	SEADRILL	WEST DRACO/WEST DORADO	7119/20	DRILLSHIP	SHI
Burner Boom	OCEAN RIG	OCEAN RIG #9 DEILLSHIP TOPSIDE	7121	DRILLSHIP	SHI
Hatch Cover & Door Solutions					
Big size Roll Up Door	SEADRILL	SEADRILL GVA7500 SEMI DRILLING RIG	3019/20	SEMI-SUBMERSIBLE RIG	DSME
Sliding Mega door	SEADRILL	SEADRILL GVA7500 SEMI DRILLING RIG	3019/20	SEMI-SUBMERSIBLE RIG	DSME
Weather tight sliding door	ODFJELL	ODFJELL GVA7500 SEMI DRILLING RIG	3023/25	SEMI-SUBMERSIBLE RIG	DSME
Hatch cover (Weather/watertight)	ODFJELL	ODFJELL GVA7500 SEMI DRILLING RIG	3023/25	SEMI-SUBMERSIBLE RIG	DSME
Vee Door	ODFJELL	ODFJELL GVA7500 SEMI DRILLING RIG	3023/25	SEMI-SUBMERSIBLE RIG	DSME
Big size Door	GRUPO R	GRUPO R GVA7500 SEMI RIG	3026/27	SEMI-SUBMERSIBLE RIG	DSME
Weather tight sliding door	GRUPO R	GRUPO R GVA7500 SEMI RIG	3026/27	SEMI-SUBMERSIBLE RIG	DSME
Hatch Cover (Weather/watertight)	GRUPO R	GRUPO R GVA7500 SEMI RIG	3026/27	SEMI-SUBMERSIBLE RIG	DSME
Weather Tight Sliding Door	PETROSERV	PETROSERV GVA7500 SEMI RIG	3024/28	SEMI-SUBMERSIBLE RIG	DSME
Hatch Cover (We./Wt.)	PETROSERV	PETROSERV GVA7500 SEMI RIG	3024/28	SEMI-SUBMERSIBLE RIG	DSME
Big size Roll Up Door	PETROSERV	PETROSERV GVA7500 SEMI RIG	3024/28	SEMI-SUBMERSIBLE RIG	DSME
Weather Tight Sliding Door	SONGA	SONGA OFFSHORE CAT.D SEMI-RIG	3031/32	SEMI-SUBMERSIBLE RIG	DSME
Manual Hatch	SONGA	SONGA OFFSHORE CAT.D SEMI-RIG	3031/32	SEMI-SUBMERSIBLE RIG	DSME
Weather Tight Sliding Door	SONGA	SONGA OFFSHORE CAT.D SEMI-RIG	3034/35	SEMI-SUBMERSIBLE RIG	DSME
Pneumatic Sliding Door	ODFJELL	ODFJELL GVA7500 SEMI DRILLING RIG	3033	SEMI-SUBMERSIBLE RIG	DSME
Manual Hatch	ODFJELL	ODFJELL GVA7500 SEMI DRILLING RIG	3033	SEMI-SUBMERSIBLE RIG	DSME
Vee Door	MAERSK	MAERSK CJ70 JACK-UP RIG	3305	JACK-UP RIG	DSME
Manual Hatch	MAERSK	MAERSK CJ70 JACK-UP RIG	3305	JACK-UP RIG	DSME
Water Tight Hatch	ALLSEAS	PIETER SHELTER VESSEL	3401	PIPELAY VESSEL	DSME
Recess Door	HEEREMA	HEEREMA NEW MONOHULL VESSEL	3402	PIPELAY VESSEL	DSME
Pilot Door	HEEREMA	HEEREMA NEW MONOHULL VESSEL	3402	PIPELAY VESSEL	DSME
Water Tight Hatch	TOP	TOP 550MT PLSV	3403/04	PIPE SUPPORT VESSEL	DSME
Vee Door	TRANSOCEAN	TRANSOCEAN DCL DRILLSHIP	3501/02/03/04/05	DRILLSHIP	DSME
Sliding Hatch	TRANSOCEAN	TDD GRS DRILLSHIP	3507/08/09/10	DRILLSHIP	DSME
Hatches Cover (Weather/watertight)	TMT	TMT DEEPWATER DRILLSHIP	3601/02/08	DRILLSHIP	DSME
Weather tight Sliding Door	ODEBRECHT	ODEBRECHT DEEPWATER DRILLSHIP	3603/04	DRILLSHIP	DSME
Hatches Cover (Weather/watertight)	ODEBRECHT	ODEBRECHT DEEPWATER DRILLSHIP	3603/04	DRILLSHIP	DSME
Manual Hatches	PETROSERV	CAROLINA DEEPWATER DRILLSHIP	3605	DRILLSHIP	DSME
POD Bay Sliding Door & Hatch	PETROSERV	CAROLINA DEEPWATER DRILLSHIP	3605	DRILLSHIP	DSME
Pneumatic Sliding Door	PETROSERV	CAROLINA DEEPWATER DRILLSHIP	3605	DRILLSHIP	DSME
Weather Tight Sliding Door	ODEBRECHT	ODEBRECHT DEEPWATER DRILLSHIP	3609/10	DRILLSHIP	DSME
Manual Hatch	ODEBRECHT	ODEBRECHT DEEPWATER DRILLSHIP	3609/10	DRILLSHIP	DSME
Manual Hatch	TRANSOCEAN	TRANSOCEAN DEEPWATER DRILLSHIP	3612/13	DRILLSHIP	DSME
Manual Hatch	ATWOOD	ATWOOD DEEPWATER DRILLSHIP	3614/17/19/22	DRILLSHIP	DSME
Manual Hatch	VANTAGE	VANTAGE DEEPWATER DRILLSHIP	3615	DRILLSHIP	DSME
Manual Hatch	VANTAGE	ENHANCED DEEPWATER DRILLSHIP	3618	DRILLSHIP	DSME
Hydraulic Hatch	INPEX	INPEX ICHTHYS FPSO	6054	FPSO	DSME
Thruster Trunk Top Hatch	INPEX	INPEX ICHTHYS FPSO	6054	FPSO	DSME
Hatch Cover	PETRONAS	PETRONAS FLNG	6302	PFLNG	DSME
Manual Hatch	PETRONAS	PETRONAS FLNG	6302	PFLNG	DSME
Big size Roll-up Door	BP	PLUTONIO	-	FPSO	HHI

Items	End User	Project Name	No.	Type	Shipyard
Hatch Cover & Door Solutions					
Electro-Hydraulic Hatch	BP	QUAD 204	Q204	FPSO	HHI
Powered Hatches	BP	QUAD 204	Q204	FPSO	HHI
Electro-Hydraulic Hatch	TOTAL	USAN	Q517	FPSO	HHI
Manual Water Tight Hatch	TOTAL	GOLIAT	Q52425	FPSO	HHI
Canister Hatch for Helideck	ENSCO	ENSCO DS-8	2059/62	DRILLSHIP	SHI
Non-Class Single Sliding Door	ENSCO	ENSCO DS-8	2059/62	DRILLSHIP	SHI
Big Sliding Door	ENSCO	ENSCO DS-10	2096	DRILLSHIP	SHI
Sliding Door	QGOG	QGOG 90K Drillship#1~2	2071	DRILLSHIP	SHI
"A" Class External Door	SEADRILL	WEST EMINENCE	7045/56	SEMI-SUBMERSIBLE RIG	SHI
Mega Roll Up Door	SEADRILL	WEST EMINENCE	7045/56	SEMI-SUBMERSIBLE RIG	SHI
Vee Door	STENA	STENA DRILLSHIP TOP SIDE	7046/53/59	DRILLSHIP	SHI
"A" Class External Door	STENA	STENA DRILLSHIP TOP SIDE	7046/53/59	DRILLSHIP	SHI
Vee Door	STENA	STENA#4 DRILLSHIP TOP SIDE	7078	DRILLSHIP for Arctic	SHI
Vee Door	MOSVOLD	MOSVOLD DRILLSHIP TOP SIDE	7048	DRILLSHIP	SHI
Vee Door	YBORG	Gazflot	7072/75	RIG for Arctic	SHI
Sliding Door	CARDIFF MARINE	CARDIFF DRILLSHIP 1 TOP SIDE	7070/71/76/80	DRILLSHIP	SHI
Non-Class single Sliding Door	OCEAN RIG	OCEAN RIG DRILLSHIP #5/#6	7094/96	DRILLSHIP	SHI
Non-Class single Sliding Door	OCEAN RIG	OCEAN RIG DRILLSHIP #8	7097	DRILLSHIP	SHI
Non-Class single Sliding Door	OCEAN RIG	OCEAN RIG DRILLSHIP #7	7103	DRILLSHIP	SHI
V-Door, Non-Class single Sliding Door	OCEAN RIG	CARDIFF DRILLSHIP TOP SIDE	7104	DRILLSHIP	SHI
Single Sliding Door	SEADRILL	WEST DRACO/WEST DORADO	7119/20	DRILLSHIP	SHI
Big Sliding Door	OCEAN RIG	OCEAN RIG #9 DEILLSHIP TOPSIDE	7121	DRILLSHIP	SHI
Hydraulic Hatch	SEADRILL	GVA 7,500 SEMI DRILLING RIG	S672	SEMI-SUBMERSIBLE RIG	HSHI
Helideck Solutions					
Al. Helideck	ODFJELL	ODFJELL GVA7500 SEMI DRILLING RIG	3025	SEMI-SUBMERSIBLE RIG	DSME
Al. Helideck	GRUPO R	GRUPO R GVA7500 SEMI RIG	3026/27	SEMI-SUBMERSIBLE RIG	DSME
Al. Helideck	PETROSERV	PETROSERV GVA7500 SEMI RIG	3028	SEMI-SUBMERSIBLE RIG	DSME
Helideck Platform with Equipment	SONGA	SONGA OFFSHORE CAT.D SEMI-RIG	3031/32	SEMI-SUBMERSIBLE RIG	DSME
Helideck Platform with Equipment	SONGA	SONGA OFFSHORE CAT.D SEMI-RIG	3034/35	SEMI-SUBMERSIBLE RIG	DSME
Helideck Platform with Equipment	ODFJELL	ODFJELL GVA7500 SEMI DRILLING RIG	3033	SEMI-SUBMERSIBLE RIG	DSME
Al. Helideck	RWE Innogy	RWEI SEABREEZE	3303/04	SELF-ELEVATING PLATFORM	DSME
Al. Helideck	MAERSK	MAERSK CJ70 JACK-UP RIG	3305	JACK-UP RIG	DSME
Al. Helideck	HEEREMA	HEEREMA NEW MONOHULL VESSEL	3402	PIPELAY VESSEL	DSME
Al. Helideck	ExxonMobil	ExxonMobil ARKUTUN-DAGI TOPSIDES	6046	FIXED PLATFORM	DSME
Helideck	CHEVRON	CHEVRON WHEATSTONE PLATFORM	6052	FIXED PLATFORM	DSME
Al. Helideck	INPEX	INPEX ICHTHYS FPSO	6054	FPSO	DSME
Al. Helideck	STATOIL	STATOIL MARINER TOPSIDES EPC	6056	PLATFORM	DSME
Al. Helideck	WOODSIDE	NR-2	Q507	FIXED PLATFORM	HHI
Al. Helideck	TOTAL	AKPO	S325	FIXED PLATFORM	HHI
Al. Helideck	DAEWOO INTERNATIONAL	SHWE FIELD DEVELOPMENT	Q52225	PLATFORM	HHI
Steel Helideck	TOTAL	MOHO NORD FPU	S707	FPU	HSHI
Material Handling Equipment(MHE)					
Material Handling Equipment	GRUPO R	GRUPO R GVA7500 SEMI RIG	3026/27	SEMI-SUBMERSIBLE RIG	DSME
Lifting Hoist (Hull /Top side)	SONGA	SONGA OFFSHORE CAT.D SEMI-RIG	3031/32	SEMI-SUBMERSIBLE RIG	DSME
Overhead Crane	SONGA	SONGA OFFSHORE CAT.D SEMI-RIG	3031/32	SEMI-SUBMERSIBLE RIG	DSME
Lifting Hoist (Hull /Top side)	SONGA	SONGA OFFSHORE CAT.D SEMI-RIG	3034/35	SEMI-SUBMERSIBLE RIG	DSME
Overhead Crane	SONGA	SONGA OFFSHORE CAT.D SEMI-RIG	3034/35	SEMI-SUBMERSIBLE RIG	DSME
Lifting Hoist (Hull /Top side)	ODFJELL	ODFJELL GVA7500 SEMI DRILLING RIG	3033	SEMI-SUBMERSIBLE RIG	DSME

Items	End User	Project Name	No.	Type	Shipyard
Material Handling Equipment(MHE)					
Trolley & Hoist	TRANSOCEAN	TDD GRS DRILLSHIP	3507/08/09/10	DRILLSHIP	DSME
Material Handling Equipment (Trolleys)	TRANSOCEAN	TDD GRS DRILLSHIP	3507/08/09/10	DRILLSHIP	DSME
Air Hoist for Moon pool Drape Hose	ODEBRECHT	ODEBRECHT DEEPWATER DRILLSHIP	3603/04	DRILLSHIP	DSME
Trolley & Hoist For Agitator	ODEBRECHT	ODEBRECHT DEEPWATER DRILLSHIP	3609/10	DRILLSHIP	DSME
Overhead Crane	TRANSOCEAN	TRANSOCEAN DEEPWATER DRILLSHIP	3612/13	DRILLSHIP	DSME
Trolley & Hoist	TRANSOCEAN	TRANSOCEAN DEEPWATER DRILLSHIP	3612/13	DRILLSHIP	DSME
Material Handling Equipments	TRANSOCEAN	TRANSOCEAN DEEPWATER DRILLSHIP	3612/13	DRILLSHIP	DSME
Overhead Crane	ATWOOD	ATWOOD DEEPWATER DRILLSHIP	3614/17/19/22	DRILLSHIP	DSME
Trolley & Hoist (Top / Hull Side)	ATWOOD	ATWOOD DEEPWATER DRILLSHIP	3614/17/19/22	DRILLSHIP	DSME
Material Handling Equipments	ATWOOD	ATWOOD DEEPWATER DRILLSHIP	3614/17/19/22	DRILLSHIP	DSME
Overhead Crane	VANTAGE	VANTAGE DEEPWATER DRILLSHIP	3615	DRILLSHIP	DSME
Trolley & Hoist (Top / Hull Side)	VANTAGE	VANTAGE DEEPWATER DRILLSHIP	3615	DRILLSHIP	DSME
Material Handling Equipments	VANTAGE	VANTAGE DEEPWATER DRILLSHIP	3615	DRILLSHIP	DSME
Trolley & Hoist (Top / Hull Side)	VANTAGE	ENHANCED DEEPWATER DRILLSHIP	3618	DRILLSHIP	DSME
Material Handling Equipments	VANTAGE	ENHANCED DEEPWATER DRILLSHIP	3618	DRILLSHIP	DSME
Trolley & Hoist (Top / Hull Side)	SONANGOL	SONANGOL DRILLSHIP	3620/21	DRILLSHIP	DSME
Material Handling Equipments	SONANGOL	SONANGOL DRILLSHIP	3620/21	DRILLSHIP	DSME
Trolley & Hoist	SEADRILL	SEADRILL DRILLSHIP	3623/24	DRILLSHIP	DSME
Material Handling Equipments	SEADRILL	SEADRILL DRILLSHIP	3623/24	DRILLSHIP	DSME
Material Handling Equipments Top side	TOTAL	TOTAL CLOV FPSO	6049	FPSO	DSME
Material Handling Equipments Hull side	TOTAL	TOTAL CLOV FPSO	6049	FPSO	DSME
Miscellaneous Lifting Handling Equipment	CHEVRON	CHEVRON WHEATSTONE PLATFORM	6052	FIXED PLATFORM	DSME
MHE	INPEX	ICHTHYS FIELD DEVELOPMENT	7108	CPF	SHI
Hoist	STATOIL	Cat-J #1/Cat-J #2	7117/18	Jack-up Rig	SHI
Wall & Shielding Solutions					
Wind Wall & Door Package	SEADRILL	SEADRILL GVA7500 SEMI DRILLING RIG	3019/20	SEMI-SUBMERSIBLE RIG	DSME
Wind Wall & Door Package	ODFJELL	ODFJELL GVA7500 SEMI DRILLING RIG	3023/25	SEMI-SUBMERSIBLE RIG	DSME
Wind Wall & Door Package	GRUPO R	GRUPO R GVA7500 SEMI RIG	3026/27	SEMI-SUBMERSIBLE RIG	DSME
Wind Wall & Door Package	PETROSERV	PETROSERV GVA7500 SEMI RIG	3024/28	SEMI-SUBMERSIBLE RIG	DSME
Wind Wall & Door Package	SONGA	SONGA OFFSHORE CAT.D SEMI-RIG	3031/32	SEMI-SUBMERSIBLE RIG	DSME
Wind Wall & Door Package	SONGA	SONGA OFFSHORE CAT.D SEMI-RIG	3034/35	SEMI-SUBMERSIBLE RIG	DSME
Wind Wall	ODFJELL	ODFJELL GVA7500 SEMI DRILLING RIG	3033	SEMI-SUBMERSIBLE RIG	DSME
Heat shield for human protection	RWE Innogy	RWEI SEABREEZE	3303/04	SELF-ELEVATING PLATFORM	DSME
Wind Wall & Door Package	TRANSOCEAN	TRANSOCEAN DCL DRILLSHIP	3501/02/03/04/05	DRILLSHIP	DSME
Wind Wall & Door Package	TMT	TMT DEEPWATER DRILLSHIP	3601/02/08	DRILLSHIP	DSME
Wind Wall & Door Package	ODEBRECHT	ODEBRECHT DEEPWATER DRILLSHIP	3603/04	DRILLSHIP	DSME
Wind Wall & Door Package	PETROSERV	CAROLINA DEEPWATER DRILLSHIP	3605	DRILLSHIP	DSME
Wind Wall & Door Package	ODEBRECHT	ODEBRECHT DEEPWATER DRILLSHIP	3609/10	DRILLSHIP	DSME
Wind Wall & Door Package	TRANSOCEAN	TRANSOCEAN DEEPWATER DRILLSHIP	3612/13	DRILLSHIP	DSME
Wind Wall & Door Package	ATWOOD	ATWOOD DEEPWATER DRILLSHIP	3614/17/19/22	DRILLSHIP	DSME
Wind Wall & Door Package	VANTAGE	VANTAGE DEEPWATER DRILLSHIP	3615	DRILLSHIP	DSME
Heat shield for Topside	CHEVRON	CVX AGBAMI FPSO	5902	FPSO	DSME
Heat shield for Lighting & Mech.	CHEVRON	CVX AGBAMI FPSO	5902	FPSO	DSME
Radiation Heat Shield Hull Side	TOTAL	TOTAL PAZFLOR FPSO HULL	5907	FPSO	DSME
Radiation Heat Shield Top Side	TOTAL	TOTAL PAZFLOR FPSO TOPSIDES	6045	FPSO	DSME
Heat shield for Lighting & Mech.	TOTAL	TOTAL PAZFLOR FPSO TOPSIDES	6045	FPSO	DSME
Heat Shield for FWD Lifeboat	TOTAL	TOTAL CLOV FPSO	6049	FPSO	DSME
Heat Shield for Topside Module	TOTAL	TOTAL CLOV FPSO	6049	FPSO	DSME

Items	End User	Project Name	No.	Type	Shipyard
Wall & Shielding Solutions					
Electrical Lighting Heat Shield	TOTAL	TOTAL CLOV FPSO	6049	FPSO	DSME
Heat Shield of Telecom	TOTAL	TOTAL CLOV FPSO	6049	FPSO	DSME
Heat Shield for Instrument	TOTAL	TOTAL CLOV FPSO	6049	FPSO	DSME
Heat Shield Gas Metering	TOTAL	TOTAL CLOV FPSO	6049	FPSO	DSME
Exterior Cladding Wall	CHEVRON	CHEVRON WHEATSTONE PLATFORM	6052	FIXED PLATFORM	DSME
Electrical Lighting Heat Shield	CHEVRON	CHEVRON WHEATSTONE PLATFORM	6052	FIXED PLATFORM	DSME
Heat Shield for Stair Tower	CHEVRON	CHEVRON WHEATSTONE PLATFORM	6052	FIXED PLATFORM	DSME
Heat shield for Topside	TOTAL	DALIA FPSO TOPSIDES	6041	FPSO	DSME
Heat shield for Lighting & Mech.	TOTAL	DALIA FPSO TOPSIDES	6041	FPSO	DSME
Heat shield for flare tower	PETRONAS	PETRONAS FLNG	6302	PFLNG	DSME
Wind Wall & Door Package	Dolphin Drilling	BOLLSTA DOLPHIN	2620	SEMI-SUBMERSIBLE RIG	HHI
Wind Wall & Door Package	DIAMOND OFFSHORE	OCEAN GREATWHITE	2704	SEMI-SUBMERSIBLE RIG	HHI
Radiant Heat Shield	BP	PLUTONIO	-	FPSO	HHI
Lighting Heat Shield & Frame, Workshop Equip.	BP	PLUTONIO	-	FPSO	HHI
Escape Tunnel	BP	QUAD 204	Q204	FPSO	HHI
Fire /Blast Wall	BP	CLAIR RIDGE	Q527	PLATFORM	HHI
Radiant Heat Shield & Structure, Workshop Equip.	CHEVRON	East Area	-	FIXED PLATFORM	HHI
Fire Protection System, Workshop Equip.	ExxonMobil	KIZOMBA-A	-	FPSO	HHI
H / Jet Blast Wall	WOODSIDE	NR-2	Q507	FIXED PLATFORM	HHI
Radiant Heat Shield (Topside),	TOTAL	AKPO	S325	FPSO	HHI
Lighting Heat Shield	TOTAL	AKPO	S325	FPSO	HHI
Fire & Blast Wall (J60&H60)	TOTAL	AKPO	S325	FIXED PLATFORM	HHI
Bridge Heat Shield	PTTEP	BONGKOT	Q51825	PLATFORM	HHI
Heat Shield	DAEWOO INTERNATIONAL	SHWE FIELD DEVELOPMENT	Q52225	PLATFORM	HHI
Fencing Wall with Sup't for Elec.	CHEVRON	GORGON	Q52125	LNG PLANT	HHI
Cladding for Stair Tower Panel	TOTAL	GOLIAT	Q52413	FPSO	HHI
Blast Wall	BP	CLAIR RIDGE	Q527	PLATFORM	HHI
Wind Wall & Door Package	STENA	STENA DRILLSHIP TOP SIDE	7046/53/59	DRILLSHIP	SHI
Wind Wall & Door Package	STENA	STENA#4 DRILLSHIP TOP SIDE	7078	DRILLSHIP for Arctic	SHI
Wind Wall & Door Package	VYBORG	Gazflot	7072/75	RIG for Arctic	SHI
Radiation Heat Shield	SHELL	PRELUDE FLOATING LNG	7100	FLNG	SHI
Fire Wall	STATOIL	VALEMON TOPSIDE	7102	PLATFORM	SHI
Escape Tunnel	STATOIL	VALEMON TOPSIDE	7102	PLATFORM	SHI
Explosion Relief Panel	STATOIL	VALEMON TOPSIDE	7102	PLATFORM	SHI
Corrugated Wall	INPEX	ICHTHYS FIELD DEVELOPMENT	7108	CPF	SHI
Wind Wall	STATOIL	Cat-J #1	7117	Jack-up Rig	SHI
Radiant Heat Shield & Structure for Escape Route	TOTAL	AKPO FIELD DEVELOPMENT	S-325	FPSO	HSHI
Marine Product & Special Equipment					
Vent Mast	Pelindo Energy	JSK 50mmscfd FRU	-	FRU	Kangnam

Our Customers



Customers



EPC/Shipyards



Partners



Our Facilities

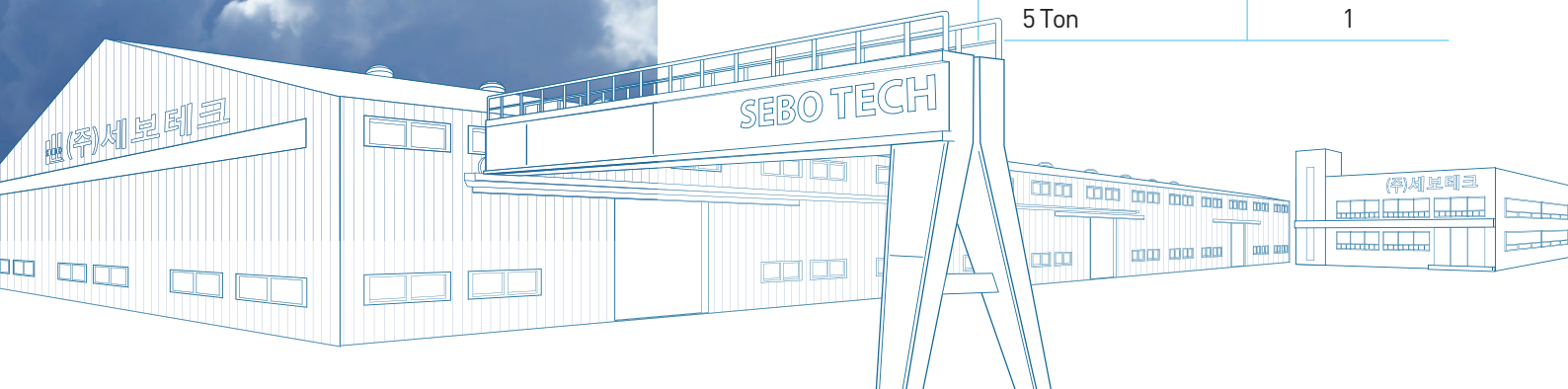
Headquarters & R&D

- **Address:** 43, Myeongji ocean city 9-ro, Gangseo-gu, Busan, Korea

Busan Factory

- **Address:** 381, Noksansaneopjung-ro, Gangseo-gu, Busan, Korea
- **Area:**
 - Total: 7,300m²~ (2,200 Pyung)
 - Shop: 3,600m²~ (1,100 Pyung)
- **Expertise & Focus:** SEBOTECH's Busan Factory is specialized in the manufacturing, fabrication, and assembly of Aluminum Solutions (i.e. various aluminum outfitting products), Wall Solutions (i.e. Wind Walls, Blast Walls) and Door Solutions (i.e. Sliding Doors). Noticeably, our factory is equipped and manned by key staff personnel specialized in aluminum material preparations and welding.
- **Equipment & Machinery**

Equipment	Specifications	Units
Welding Machines	TIG	16
	MIG	11
	CO2	5
Drilling Machine	Ø32	11
Band Saw	15T	4
High Speed Cutter	15T	4
Milling Machine	Ø18	1
Air Compressor	100 HP	1
Forklift	3 Ton	1
	7 Ton	1
Cranes	30 Ton Gantry Crane	1
	30 Ton	1
	20 Ton	2
	5 Ton	1

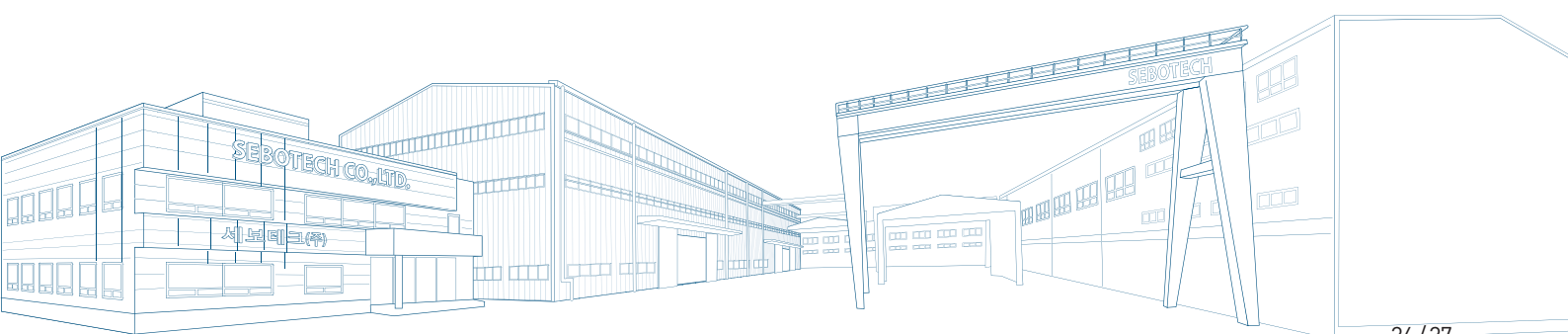


Hwajeon Factory

- **Address:** 11, Hwajeonsandan 5-ro 14beon-gil, Gangseo-gu, Busan, Korea
- **Area:**
 - i. Total: 7,282m²~ (2,202 Pyung)
 - ii. Shop: 2,121m²~ (637 Pyung)
- **Expertise & Focus:** Hwajeon Factory is specialized in the manufacturing, fabrication, and assembly of carbon steel products (i.e. various outfitting products), Wall Solutions (i.e. Wind Walls, Blast Walls), Hatch Cover & Door Solutions, and BOP Drilling Support Equipment. Our factory is equipped and manned by key staff personnel specialized in carbon steel material products.
- **Equipment & Machinery**

Equipment	Specifications	Units
Welding Machines	TIG	6
	TIG Portable	1
	CO2	31
	ARC Portable	1
	Gouging Welder	2
	Stud Welder	3
CNC	-	1
Milling Machine	-	1
Drilling Machines	Ø40	4
Cutting Machine	6T	1
Bending Machine	5T	1
Air Compressor	100 HP	1
Press	3 Ton	1
	5 Ton	1
Corner Shear Machine	-	1
Plasma Cutter	-	1
Forklift	7 Ton	1

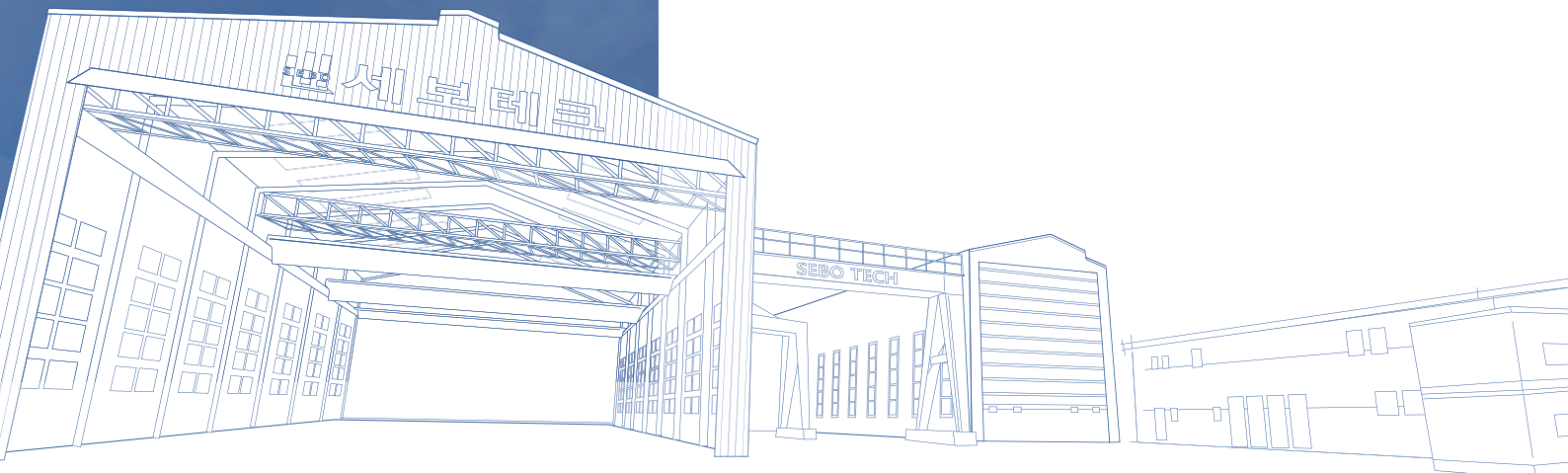
Equipment	Specifications	Units
Cranes	30 Ton Gantry Crane	1
	30 Ton	1
	20 Ton	1
	10 Ton	1
	7.5 Ton Gantry Crane	1
	5 Ton Gantry Crane	2
	5 Ton	1
	2.8 Ton Gantry Crane	1
	2.8 Ton	1



Mokpo Factory (Mokpo Shop 1)

- **Address:** 172, Yongang-ro, Samho-eup, Yeongam-gun, Jeollanam-do, Korea
- **Area:**
 - i. Total: 11,400m²~ (3,451 Pyung)
 - ii. Shop: 3,500m²~ (1,061 Pyung)
- **Expertise & Focus:** SEBOTECH's Mokpo Factory, Shop 1 is specialized in the manufacturing, fabrication, and assembly of large aluminum structure products (i.e. Al. Helideck Solutions) and Wall Solutions (i.e. Wind Walls, Blast Walls). In addition, our shop is equipped with testing equipment for Boom Solutions.
- **Equipment & Machinery**

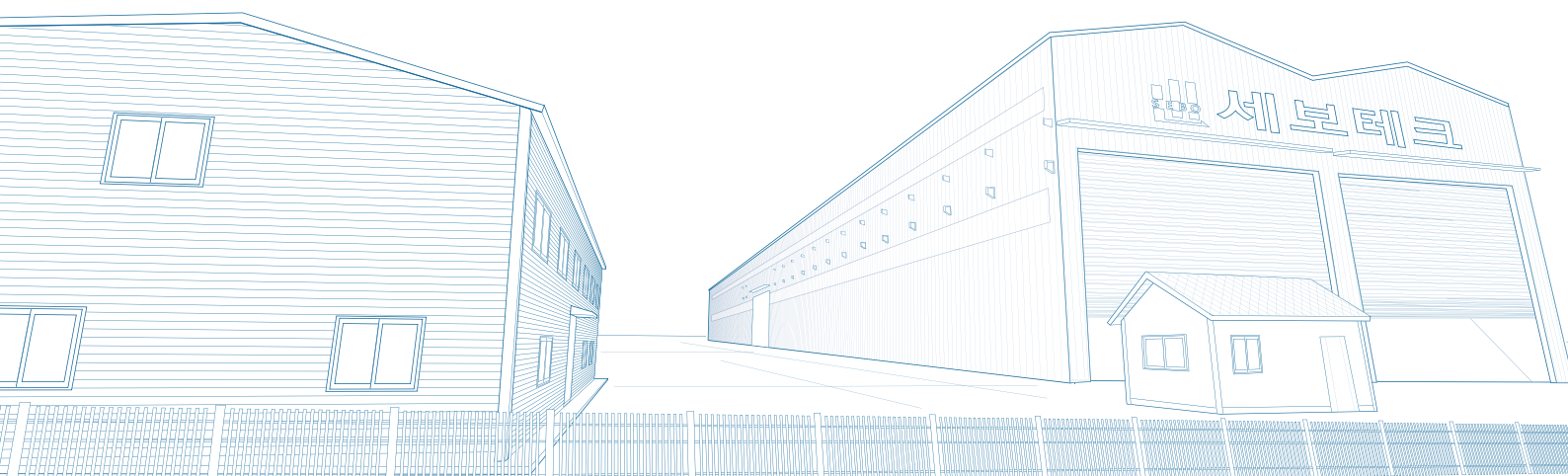
Equipment	Specifications	Units
Welding Machines	TIG	3
	MIG	7
	CO2	43
	Auto Carriage(CO2)	5
Band Saw	650(W)	1
Forklift	7 Ton	1
Plasma Cutter	-	1
Cutter	YK 150	2
Air Compressor	100 HP	1
	50 HP	2
Cranes	30 Ton	2
	20 Ton Gantry Crane	2
	15 Ton	2
	10 Ton	1



Mokpo Factory (Mokpo Shop 2)

- **Address:** 31, Daebulsandan 1-ro, Samho-eup, Yeongam-gun, Jeollanam-do, Korea
- **Area:**
 - i. Total: 21,020m²~ (6,370 Pyung)
 - ii. Shop: 13,520m²~ (4,097 Pyung)
- **Expertise & Focus:** SEBOTECH's Mokpo Factory, Shop 2 is specialized in the manufacturing, fabrication, and assembly of large aluminum & carbon steel structure products (i.e. Helideck Solutions), Wall Solutions (i.e. Wind Walls, Blast Walls), and Boom Solutions (i.e. Flare Boom & Flare Tower Solutions). In addition, our shop is equipped with testing equipment for various product.
- **Equipment & Machinery**

Equipment	Specifications	Units
Welding Machines	TIG	5
	CO2	66
	MIG	3
	Dry Oven	2
Band Saw	450(W)	3
Forklift	7 Ton	2
Drilling Machines	-	2
Air Compressor	200 HP	1
	100 HP	2
Cranes	100+50 Ton	4
	40 Ton	4
	15 Ton	4





43, Myeongji ocean city 9-ro, Gangseo-gu, Busan, Korea
FAX : +82-51-775-4501 TEL : +82-51-775-4500
COPYRIGHT® SEBOTECH Co.,Ltd.