

## ■ 행가도어 / HANGER DOOR

# (株)宇信 행가도어는

개폐시 작동이 편리하며 다양한 색상으로 미려한 외관을 자랑합니다.  
주로 공장출입문, 창고, 농장등에 사용됩니다.

### ■ 우신행가도어는

- 堅固하여 反永久的입니다.
- 鐵材Door에 비해 5배 가볍습니다.
- 多様な 色相으로 表面이 秀麗합니다.
- 開閉시 作動이 便利하고 저소음입니다.
- 施工시 組立式으로 簡便합니다.
- Semi-permanent because of its solid characteristics
- Lighter by 5 times compare with steel door
- Graceful appearance by the various kinds of colors
- Excellent operation and low noise as opening and close shutting the door
- Convenient to deal because of its prefabricated execution of works



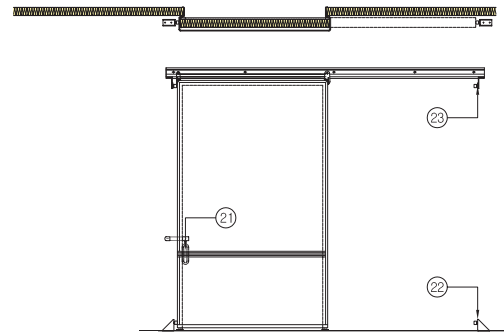
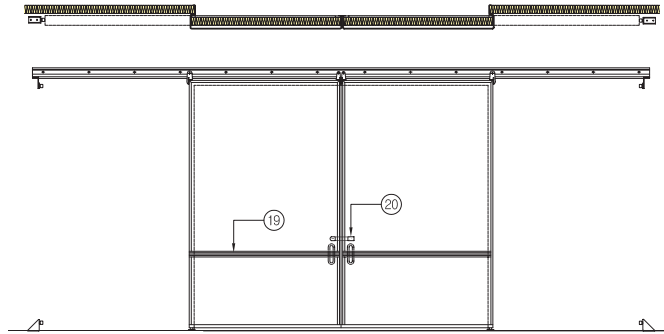
DOUBLE HANGER DOOR



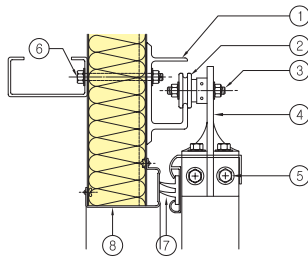
SINGLE HANGER DOOR

## DOUBLE HANGER DOOR

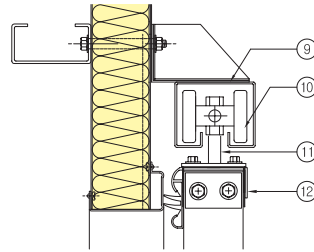
## SINGLE HANGER DOOR



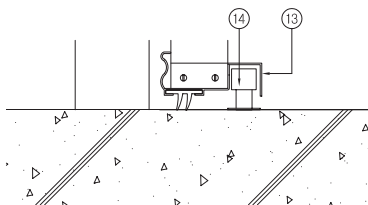
상부단면도 A형



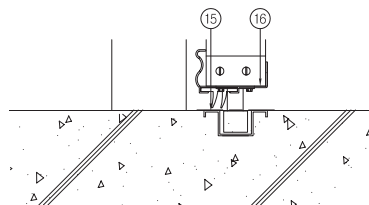
상부단면도 B형



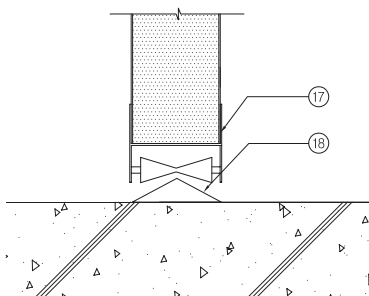
하부단면도 A형



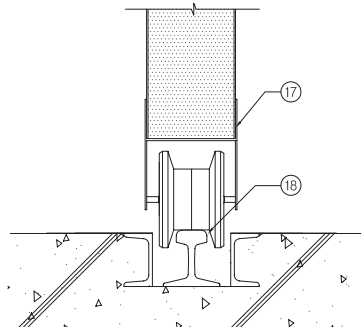
하부단면도 B형



하부단면도 C형



하부단면도 D형



- ① C-type Al TRACK
- ② NYLON WHEEL
- ③ CRANK SHAFT
- ④ ST'S BRACKET
- ⑤ STAINLESS STEEL BOLT
- ⑥ MEET BOLT
- ⑦ DOUBLE-EDGED GASKET
- ⑧ AL-FASCIA
- ⑨ HANGER RAIL
- ⑩ BEARING ROLLER
- ⑪ HANGER CONTROL AXIS
- ⑫ AL UPPER PART FRAME
- ⑬ AL GUIDE RAIL
- ⑭ GUIDE ROLLER
- ⑮ ST'S RAIL
- ⑯ AL LOWER PART FRAME
- ⑰ LOWER PART ROLLER
- ⑱ STEEL LOWER PART RAIL
- ⑲ AL DOOR HANDLE
- ⑳ DOOR LOCK
- ㉑ HANDLE
- ㉒ LOWER PART STOP BAR
- ㉓ UPPER PART STOP BAR