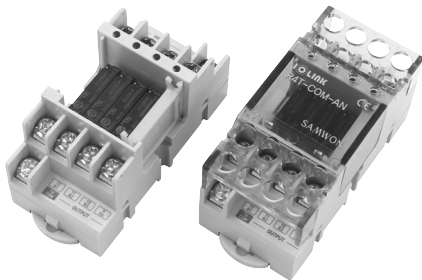


R4T-COM Series 4 Points Common-type

User's Guide



Thank you for purchasing product of SAMWON ACT.
Please check model of product that you purchase first, and read this manual prior to use it.

• Caution for Safety

Warning Case that results in serious damage in human body or equipment, and fire if user handles this equipment wrongly

Caution Case that results in slight damage in human body or equipment, and fire if user handles this equipment wrongly

Warning

- 1. Do Not use other voltage except appointed voltage.**
It may be the cause of fire or damage of equipment.
- 2. Use it within nominal voltage and current which are marked on load.**
It may be the cause of fire or damage of equipment.
- 3. Check COMMON polarity of using controller (PLC, etc) first, and then select proper product.**
It may be the cause of fire or damage of this equipment and user's.
- 4. Make controller and connection cable between relay terminals after checking internal wiring of relay terminal and PIN (terminal or socket) array of controller if you want to make it for yourself.**
It may be the cause of malfunction or damage of this equipment and user's.

* The connection cable for PLC of various makers is provided by us. Please refer to the catalogue or contact Head or branch office if you need more detail models and specification.

Caution

- 1. Plug or unplug power line and/or connector for signal after making sure to shut off power so as that it is prevented to be damaged or malfunctioned.**
- 2. Read this user's guide which is attached to product, and check product's performance, specification, operation pattern, signal, and how to handle prior to use.**
Keep user's guide please.
- 3. When wiring the terminal block, please tighten it with the specified torque using the appropriate tool.**
If it is outside of this range torque, it may cause malfunction due to breakage or looseness of tightening surface terminal.
- 4. Use removal key which is supplemented for replacement.**

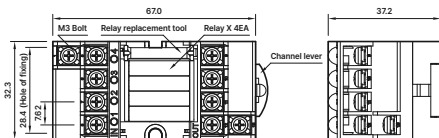
Model selection

Model	Mounting relay	No. of I/O points	Coil rated voltage	Common		Interface		Dimensions (W * Dmm)	Mounting method
				Coil side	Contact side	Coil side	Contact side		
R4T-COM-AN	PANASONIC	4 Point (1a * 4)	24V DC	NPN \ominus COM	4 Point Com.	Screw terminal block 7.62mm Pitch		32.3 * 67.0	Screw fastening / DIN Rail (Channel)
R4T-COM-AP	APAN3124			PNP \ominus COM					

PA-N relay specification

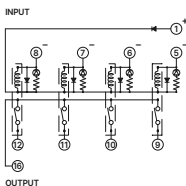
Item		APAN3124
Contact	Contact composition	1 Form A (Bifurcated)
	Rated load (Resistive load)	5A 250V AC / 5A 30V DC
	Max. switching current	5A
	Max. switching voltage	250V AC / 110V DC (0.4A)
Coil	Rated voltage	24V DC
	Operating voltage	70% max. of Rated voltage
	Return voltage	5% min. of Rated voltage
	Coil resistance	5,236 Ω
	Rated power consumption	110mW
Surge voltage (Coil and contact)		6,000V
Withstand voltage (Coil and contact)		3,000V rms for 1min
Country of origin		CHINA

Dimension

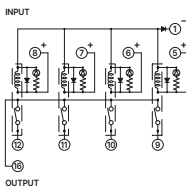


Wiring diagram

• R4T-COM-AN



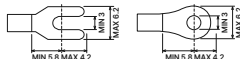
• R4T-COM-AP



Material/Specification

Rated load	250VAC, 30VDC 5A/Point, 10A/Com
Case	Modified PPO
Protective cover	Polycarbonate
Board	Epoxy 1.6t / 2oz
Suitable wire	AWG 22 ~ 16 (1.5mm ² /MAX)
Terminal screw	M3 X 6
Screw torque	7~8Kgf·cm (0.68~0.78)
Ambient temperature	-10°C ~ +50°C (No condensation)

Applicable crimp terminal



How to replace relay (Removal Key is embedded in product)



* The above specifications are subject to change without notice.

* Please contact HQ or branch office where you purchased product for A/S of this product or technique.



삼원ACT(주)

SAMWON ACT Co., Ltd.

■ HQ | 47035, 28, Daedong-ro, Sasang-gu, Busan
TEL : 051) 320-7777 FAX : 051) 312-2233
■ SEOUL Office | 14353, M Cluster-707, 17, Deogan-ro
104beon-gil, Gwangmyeong-si, Gyeonggi-do
TEL : 02) 837-2230 FAX : 02) 837-2226

NO.202308-OM-ENG-R4T-COM