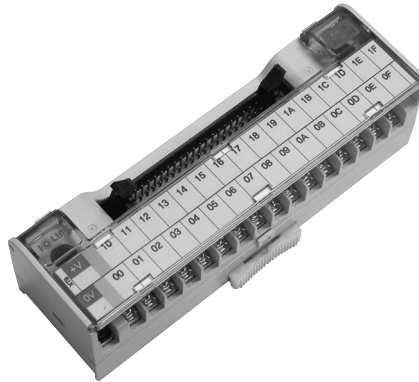


XTB-PLC Series

User's Guide



Thank you for purchasing product of SAMWON ACT.
Please check model of product that you purchase first, and read this manual prior to use it.

• Caution for Safety

Caution Case that results in serious damage in human body or equipment, and fire if user handles this equipment wrongly

Warning Case that results in slight damage in human body or equipment, and fire if user handles this equipment wrongly

Caution

1. When machining and wiring the mounting hole, do not allow foreign matter such as dust or wire covering to enter the connection terminal. Failure to do so may result in damage to the unit, heat, or ignition.
2. Be sure to shut off the power supply from the outside before mounting and wiring.

※ The connection cable for PLC of various makers is provided by us. Please refer to the catalogue or contact Head or branch office if you need more detail models and specifications.

Warning

1. Use within the specified temperature range. (−10℃ ~ +50℃) Damage to the outer case may occur.
2. Use within the specified rated voltage and rated current range.
This may result in fire or damage to the product.
3. Read this user's guide which is attached to product, and check product's nominal, characteristics, specification, wiring diagram and how to handle prior to use.
4. Please make sure to check the internal wiring diagram of the terminal block and the arrangement of the controller PIN (terminal) when making the connection cable between the controller (PLC etc.). It may be the cause of malfunction or damage of this equipment and user's.

• Model Configuration

XTB – ME1

①

②

- ① 32-point PLC dedicated IO fixed interface terminal block
- ② Applicable PLC model
(Please refer to the model selection table below)

• Model Selection

Model	PLC	Applicable PLC card	Applicable cable	No. of Poles	Cable Connector Model	Dimensions (W×Dmm)	Mounting method
XTB-ME1	MITSUBISHI Q/A1S	QX41/QX42/QY41P/QY42P A1SX41/A1SX42/A1SY41 A1SY42/A1SY82/A1SH42	C40HF— □ PX-1	Power : 2P IO : 34P	HIF3BA-40PA -2.54DSA	131.0×40.0	Screw mounting/ DIN Rail (Channel)
XTB-ME2		QX81	C37HD— □ PX-MI1				
XTB-ME3		A1SX81	C37HD— □ PX-MI3				
		QY81P	C37HD— □ PX-MI1				
XTB-LS1	LS IS XGT	A1SY81P	C37HD— □ PX-MI3				
		XGI-D24A/XGI-D24B XGI-D28A/XGI-D28B	C40HF— □ PX-1				
XTB-LS2		XGQ-TR4A/XGQ-TR4B XGQ-TR8A/XGQ-TR8B	C40HF— □ PX-1				
XTB-LS3	LS IS MASTER-K	G4I-D24A/C, G4I-D24B G6I-D24A	C37HD— □ PX				
		G4I-D28A	C40HF— □ PX-3, 1A				
		G3I-D28A					
		XTB-LS4	G4Q-TR4A/G4Q-TR4B G6Q-TR4A/G6Q-TR4B				
XTB-LS5		G3Q-TR8A	C40HF— □ PX-3				
		G4Q-TR8A	C40HF— □ PX-1A, 3				
XTB-LB1	LS IS XGB	XBE-DC32A	C40HH— □ PU-XBI				
XTB-LB2		XBE-TN32A XBE-TP32A	C40HH— □ PU-XBI				
XTB-SM1	SIEMENS S7-300	6ES7 321-1BL00-0AA0 6ES7 322-1BL00-0AA0 6ES7 323-1BL00-0AA0	R40HH— □ SM				

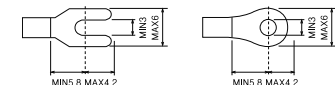
• Rating/Specification

Rated voltage	125V AC / 24V DC
Rated current	Power 2A, I/O 0.5A
Insulation resistance	100MΩ or above (DC 500V)
Dielectric strength	AC500V 1min
Applicable wire	AWG22~16 (1.5mm ² / MAX)
Terminal Screw	M3 × 6L
Screw torque	7~8Kgf · cm (0.68~0.78 N · m)
Ambient temperature	−10℃ ~ +50℃ (No condensation)

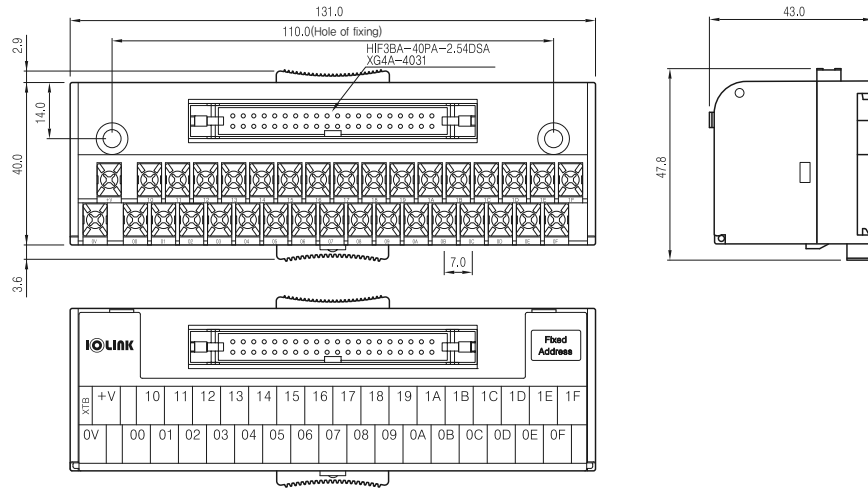
• Material

Terminal	Modified PPO
Protective cover	Polycarbonate
P.C.B	Epoxy 1.6t

• Applicable crimp terminal



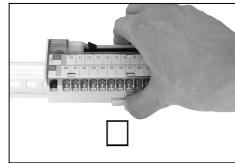
● Dimension



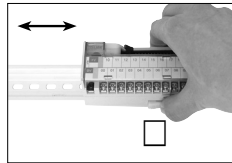
● Diagram

Array Terminal	Applicable Model																																				
<table><tr><td>XTB</td><td>+V</td><td>10</td><td>11</td><td>12</td><td>13</td><td>14</td><td>15</td><td>16</td><td>17</td><td>18</td><td>19</td><td>1A</td><td>1B</td><td>1C</td><td>1D</td><td>1E</td><td>1F</td></tr><tr><td>OV</td><td>00</td><td>01</td><td>02</td><td>03</td><td>04</td><td>05</td><td>06</td><td>07</td><td>08</td><td>09</td><td>0A</td><td>0B</td><td>0C</td><td>0D</td><td>0E</td><td>0F</td><td></td></tr></table>	XTB	+V	10	11	12	13	14	15	16	17	18	19	1A	1B	1C	1D	1E	1F	OV	00	01	02	03	04	05	06	07	08	09	0A	0B	0C	0D	0E	0F		XTB-ME1 / XTB-ME3 XTB-LS2 / XTB-LS4 / XTB-LS5 XTB-LB2
XTB	+V	10	11	12	13	14	15	16	17	18	19	1A	1B	1C	1D	1E	1F																				
OV	00	01	02	03	04	05	06	07	08	09	0A	0B	0C	0D	0E	0F																					
<table><tr><td>XTB</td><td>COM</td><td>10</td><td>11</td><td>12</td><td>13</td><td>14</td><td>15</td><td>16</td><td>17</td><td>18</td><td>19</td><td>1A</td><td>1B</td><td>1C</td><td>1D</td><td>1E</td><td>1F</td></tr><tr><td>COM</td><td>00</td><td>01</td><td>02</td><td>03</td><td>04</td><td>05</td><td>06</td><td>07</td><td>08</td><td>09</td><td>0A</td><td>0B</td><td>0C</td><td>0D</td><td>0E</td><td>0F</td><td></td></tr></table>	XTB	COM	10	11	12	13	14	15	16	17	18	19	1A	1B	1C	1D	1E	1F	COM	00	01	02	03	04	05	06	07	08	09	0A	0B	0C	0D	0E	0F		XTB-ME2 XTB-LS1 / XTB-LS3 XTB-LB1
XTB	COM	10	11	12	13	14	15	16	17	18	19	1A	1B	1C	1D	1E	1F																				
COM	00	01	02	03	04	05	06	07	08	09	0A	0B	0C	0D	0E	0F																					
<table><tr><td>XTB</td><td>COM</td><td>10</td><td>11</td><td>12</td><td>13</td><td>14</td><td>15</td><td>16</td><td>17</td><td>18</td><td>19</td><td>1A</td><td>1B</td><td>1C</td><td>1D</td><td>1E</td><td>1F</td></tr><tr><td>COM</td><td>00</td><td>01</td><td>02</td><td>03</td><td>04</td><td>05</td><td>06</td><td>07</td><td>08</td><td>09</td><td>0A</td><td>0B</td><td>0C</td><td>0D</td><td>0E</td><td>0F</td><td></td></tr></table>	XTB	COM	10	11	12	13	14	15	16	17	18	19	1A	1B	1C	1D	1E	1F	COM	00	01	02	03	04	05	06	07	08	09	0A	0B	0C	0D	0E	0F		XTB-SM1
XTB	COM	10	11	12	13	14	15	16	17	18	19	1A	1B	1C	1D	1E	1F																				
COM	00	01	02	03	04	05	06	07	08	09	0A	0B	0C	0D	0E	0F																					

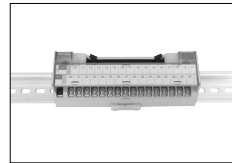
● How to move after DIN rail mounting



Lock is released by pressing the clip.



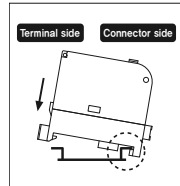
Terminal block can be moved while pressing the clip.



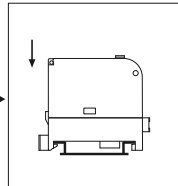
Place the clip in the desired position and it will be fixed.

● How to remove DIN rail

• Mounting method

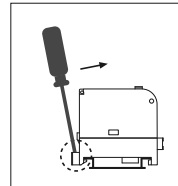


Hang the connector side to the DIN rail as shown in the figure.

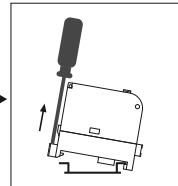


Mounting is completed by pressing in the direction of the arrow.

• Detaching method



Hang the clip using a ⊖ driver and push it in the direction of the arrow.



Lift in the direction of the arrow to complete separation.

• XTB-ME1 / XTB-LS2

+V	+V	0F	0E	0D	0C	0B	0A	09	08	07	06	05	04	03	02	01	00
②	④	⑥	⑧	⑩	⑫	⑭	⑮	⑯	⑰	⑱	⑲	⑳	㉑	㉒	㉓	㉔	㉕
①	③	⑤	⑦	⑨	⑪	⑬	⑭	⑯	⑰	⑱	㉑	㉒	㉓	㉔	㉕	㉖	㉗
OV	OV	1F	1E	1D	1C	1B	1A	19	18	17	16	15	14	13	12	11	10

• XTB-ME3 / XTB-LS4

01	03	05	07	09	0B	0D	0F	11	13	15	17	19	1B	1D	1F	OV	
②	④	⑥	⑧	⑩	⑫	⑭	⑮	⑯	⑰	⑱	㉑	㉒	㉓	㉔	㉕	㉖	㉗
①	③	⑤	⑦	⑨	⑪	⑬	⑭	⑯	⑰	⑱	㉑	㉒	㉓	㉔	㉕	㉖	㉗
00	02	04	06	08	0A	0C	0E	10	12	14	16	18	1A	1C	1E	+V	+V

• XTB-LB1

01	03	05	07	09	0B	0D	0F	com	11	13	15	17	19	1B	1D	1F	com
②	④	⑥	⑧	⑩	⑫	⑭	⑮	⑯	⑰	⑱	㉑	㉒	㉓	㉔	㉕	㉖	㉗
①	③	⑤	⑦	⑨	⑪	⑬	⑭	⑯	⑰	⑱	㉑	㉒	㉓	㉔	㉕	㉖	㉗
00	02	04	06	08	0A	0C	0E	com	10	12	14	16	18	1A	1C	1E	com

• XTB-SM1

+V	20	21	22	23	24	25	26	27	OV	+V	30	31	32	33	34	35	36	37	OV
②	④	⑥	⑧	⑩	⑫	⑭	⑮	⑯	⑰	⑱	㉑	㉒	㉓	㉔	㉕	㉖	㉗	㉘	㉙
①	③	⑤	⑦	⑨	⑪	⑬	⑭	⑯	⑰	⑱	㉑	㉒	㉓	㉔	㉕	㉖	㉗	㉘	㉙
+V	00	01	02	03	04	05	06	07	OV	+V	10	11	12	13	14	15	16	17	OV

• XTB-ME2 / XTB-LS3

01	03	05	07	09	0B	0D	0F	11	13	15	17	19	1B	1D	1F	com	
②	④	⑥	⑧	⑩	⑫	⑭	⑮	⑯	⑰	⑱	㉑	㉒	㉓	㉔	㉕	㉖	㉗
①	③	⑤	⑦	⑨	⑪	⑬	⑭	⑯	⑰	⑱	㉑	㉒	㉓	㉔	㉕	㉖	㉗
00	02	04	06	08	0A	0C	0E	10	12	14	16	18	1A	1C	1E	com	

• XTB-LB1

com	com	0F	0E	0D	0C	0B	0A	09	08	07	06	05	04	03	02	01	00
②	④	⑥	⑧	⑩	⑫	⑭	⑮	⑯	⑰	⑱	㉑	㉒	㉓	㉔	㉕	㉖	㉗
①	③	⑤	⑦	⑨	⑪	⑬	⑭	⑯	⑰	⑱	㉑	㉒	㉓	㉔	㉕	㉖	㉗
com	com	1F	1E	1D	1C	1B	1A	19	18	17	16	15	14	13	12	11	10

• XTB-LB2

01	03	05	07	09	0B	0D	0F	+V	11	13	15	17	19	1B	1D	1F	OV
②	④	⑥	⑧	⑩	⑫	⑭	⑮	⑯	⑰	⑱	㉑	㉒	㉓	㉔	㉕	㉖	㉗
①	③	⑤	⑦	⑨	⑪	⑬	⑭	⑯	⑰	⑱	㉑	㉒	㉓	㉔	㉕	㉖	㉗
00	02	04	06	08	0A	0C	0E	+V	10	12	14	16	18	1A	1C	1E	OV

• XTB-LS5

01	03	05	07	09	0B	0D	0F	11	13	15	17	19	1B	1D	1F	+V	+V	OV	OV
②	④	⑥	⑧	⑩	⑫	⑭	⑮	⑯	⑰	⑱	㉑	㉒	㉓	㉔	㉕	㉖	㉗	㉘	㉙
①	③	⑤	⑦	⑨	⑪	⑬	⑭	⑯	⑰	⑱	㉑	㉒	㉓	㉔	㉕	㉖	㉗	㉘	㉙
00	02	04	06	08	0A	0C	0E	10	12	14	16	18	1A	1C	1E	+V	+V	OV	OV

※ The above specifications are subject to change without notice.

※ Please contact HQ or branch office where you purchased product for A/S of this product or technique.