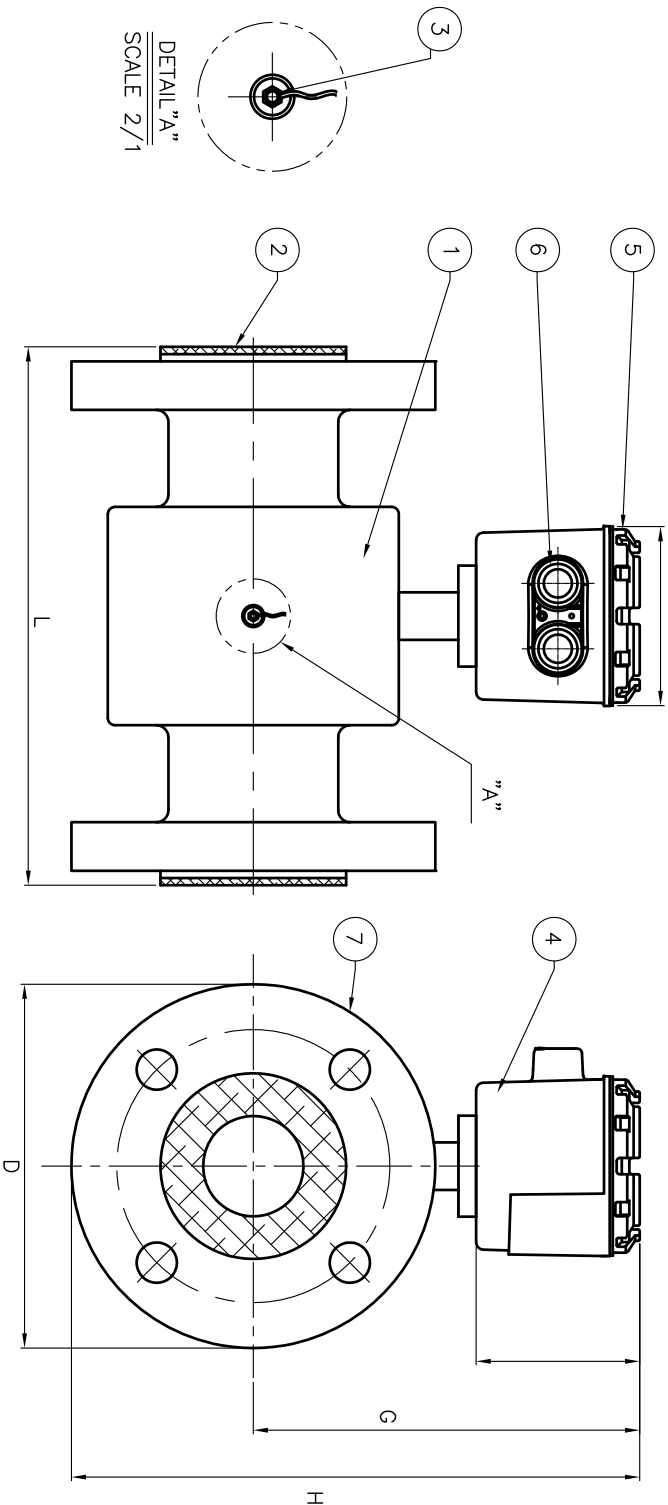


1. ENCLOSURE : WEATHER PROOF
2. MOUNTING : JIS 10K(STD)




| No. | PIPE SIZE | | DIMENSIONS | | | | | APPROX WEIGHT |
|-----|-----------|-------|------------|------|------|------|----|---------------|
| | mm | INCH | D mm | L mm | G mm | H mm | Kg | |
| 1 | 10A | 3/8 | 90 | 150 | 198 | 241 | 4 | |
| 2 | 15A | 1/2 | 95 | 150 | 198 | 246 | 4 | |
| 3 | 20A | 3/4 | 100 | 150 | 198 | 251 | 4 | |
| 4 | 25A | 1 | 125 | 150 | 204 | 262 | 5 | |
| 5 | 32A | 1-1/4 | 135 | 150 | 209 | 279 | 7 | |
| 6 | 40A | 1-1/2 | 140 | 200 | 209 | 284 | 8 | |
| 7 | 50A | 2 | 155 | 200 | 214 | 297 | 10 | |
| 8 | 65A | 2-1/2 | 175 | 200 | 229 | 322 | 15 | |
| 9 | 80A | 3 | 185 | 200 | 234 | 334 | 15 | |
| 10 | 100A | 4 | 210 | 250 | 244 | 354 | 20 | |
| 11 | 125A | 5 | 250 | 250 | 259 | 384 | 22 | |
| 12 | 150A | 6 | 280 | 300 | 279 | 422 | 33 | |

| No. | PIPE SIZE | | DIMENSIONS | | | | | APPROX WEIGHT |
|-----|-----------|------|------------|------|------|------|-----|---------------|
| | mm | INCH | D mm | L mm | G mm | H mm | Kg | |
| 13 | 200A | 8 | 330 | 350 | 309 | 479 | 43 | |
| 14 | 250A | 10 | 400 | 400 | 334 | 532 | 72 | |
| 15 | 300A | 12 | 445 | 500 | 366 | 589 | 100 | |
| 16 | 350A | 14 | 490 | 500 | 387 | 640 | 121 | |
| 17 | 400A | 16 | 560 | 600 | 412 | 695 | 145 | |
| 18 | 450A | 18 | 620 | 600 | 440 | 747 | 207 | |
| 19 | 500A | 20 | 675 | 600 | 467 | 802 | 210 | |
| 20 | 600A | 24 | 795 | 600 | 522 | 912 | 250 | |
| 21 | 700A | 28 | 905 | 700 | 580 | 1027 | 350 | |
| 22 | 800A | 32 | 1020 | 800 | 640 | 1147 | 460 | |
| 23 | 900A | 36 | 1120 | 900 | 690 | 1247 | 550 | |
| 24 | 1000A | 40 | 1235 | 1000 | 750 | 1367 | 680 | |

| | | | | | | | | | |
|-----|--------------|------|----------|----------|----------|--|--|--|--|
| △ | | | | | | | | | |
| △ | | | | | | | | | |
| △ | | | | | | | | | |
| △ | | | | | | | | | |
| △ | | | | | | | | | |
| △ | FOR APPROVAL | | | | | | | | |
| REV | DESCRIPTION | DATE | DESIGNED | REVIEWED | APPROVED | | | | |

MANUFACTER

 **Seoulin Instech Co., Ltd.**

TITLE

MAGNETIC FLOWMETER
SMF-S
ASSEMBLY DRAWING

CUSTOMER

-

PROJECT

-

SCALE

N/S

DATE NO.

SJ-MO32-DWG-AS002_RO

REV

1

SCALE

1:1

REV

1

SCALE

1:1

REV

1

| | | | | |
|----|-------------|--------------|-----|---|
| 7 | FLANGE | C/S(STD) | 2 | REF.ATT1 |
| 6 | CABLE GRAND | 62H-ALLOY | 1 | |
| 5 | COVER | AL-ALLOY | 1 | |
| 4 | T/B BOX | AL-ALLOY | 1 | |
| 3 | ELECTRODE | 316LSS (STD) | 2 | <input type="checkbox"/> Platinum <input type="checkbox"/> Tantalum |
| 2 | LINING | PTFE(STD) | 1 | <input type="checkbox"/> HASTELLOY-B <input type="checkbox"/> HASTELLOY-C |
| 1 | SENSOR | C/S(STD) | 1 | <input type="checkbox"/> 304SS <input type="checkbox"/> 316SS |
| NO | DESCRIPTION | MATERIAL | QTY | SPECIFICATION |

BILL OF MATERIAL

| | |
|----------|---|
| CUSTOMER | - |
| PROJECT | - |

| | |
|------------|--|
| TITLE | MAGNETIC FLOWMETER SMF-S ASSEMBLY DRAWING |
| MANUFACTER |  Seoulin Instech Co., Ltd. |

| | |
|----------|----------------------|
| SCALE | N/S |
| DATE NO. | SJ-MO32-DWG-AS002_RO |
| REV | 1 |