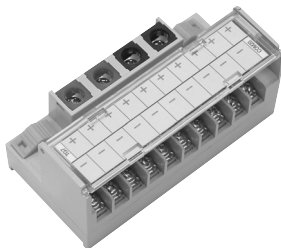


## TG7-COM20P Series

### User's Guide



Thank you for purchasing product of SAMWON ACT.  
Please check model of product that you purchase first, and read this manual prior to use it.

#### ● Caution for Safety

**⚠ Caution** Case that results in serious damage in human body or equipment, and fire if user handles this equipment wrongly

**⚠ Warning** Case that results in slight damage in human body or equipment, and fire if user handles this equipment wrongly

#### **⚠ Caution**

1. When machining and wiring the mounting hole, do not allow foreign matter such as dust or wire covering to enter the connection terminal.  
Failure to do so may result in damage to the unit, heat, or ignition.
2. Be sure to shut off the power supply from the outside before mounting and wiring.

※ The connection cable for PLC of various makers is provided by us. Please refer to the catalogue or contact Head or branch office if you need more detail models and specifications.

#### **⚠ Warning**

1. Use within the specified temperature range, ( $-10^{\circ}\text{C} \sim +50^{\circ}\text{C}$ )  
Damage to the outer case may occur.
2. Use within the specified rated voltage and rated current range.  
This may result in fire or damage to the product.
3. Read this user's guide which is attached to product, and check product's nominal, characteristics, specification, wiring diagram and how to handle prior to use.
4. Please make sure to check the arrangement of the +, - when wiring.  
It may be the cause of malfunction or damage of this equipment and user's.

## ● Model Configuration

# TG7-COM 20P□

①

②

③

- ① Common terminal block which is 7.0mm Pitch  
separate input power terminal for Common use only
- ② No. of terminal Poles
- ③ Common terminal configuration

## ● Model Selection

Model	No. of Poles	Common terminal configuration	Dimensions	Mounting method
TG7-COM20P	Input : 4	Input : 2P <sup>+</sup> , 2P <sup>-</sup> / Output : Upper side 10P <sup>+</sup> , Lower side 10P <sup>-</sup>	80.0 × 40.0	Screw mounting/ DIN Rail (Channel)
TG7-COM20PB	Output : 20	Input : 2P <sup>+</sup> , 2P <sup>-</sup> / Output : Left side upper and lower 10P <sup>+</sup> , Right side upper and lower 10P <sup>-</sup>		

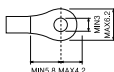
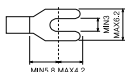
## ● Characteristics

Rated voltage	125V Max.
Rated current	10A
Insulation resistance	100MΩ or above (DC 500V)
Dielectric strength	AC500V 1min
Applicable wire	AWG22~16 (MAX / 1.5mm <sup>2</sup> )
Terminal Screw	Input : M3.5x10L (4Pole) Output : M3x6L (20Pole)
Screw torque	7~8Kgf · cm (0.68~0.78N · m)
Ambient temperature	-10℃ ~ +50℃ (No condensation)

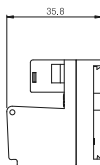
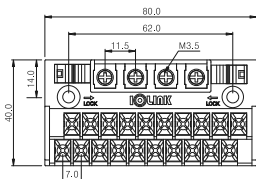
## ● Material

Terminal	Modified PPO
Protective cover	Modified PPO
P.C.B	Epoxy 1.6t

## ● Applicable crimp terminal

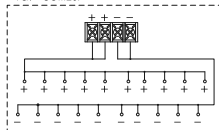


## ● Dimension

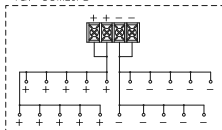


## ● Wiring Diagram

\* TG7-COM20P



\* TG7-COM20PB



※ The above specifications are subject to change without notice.

※ Please contact HQ or branch office where you purchased product for A/S of this product or technique.



**삼원ACT(주)**  
SAMWON ACT Co., Ltd.

■ HQ : 47035, 28, Daedong-ro, Sasang-gu, Busan  
TEL : (051)320-7777 FAX : (051)312-2233  
■ SEOUL Office: 14353, M Cluster-707, 17, Deogan-ro  
104beon-gil, Gwangmyeong-si, Gyeonggi-do  
TEL : (02)837-2230 FAX : (02)837-2226

NO.201107-OM-ENG-TG7-COM20P