

# BREATHING VALVES

series  
VD

Protection	Mines	n.a.	IM2	Ex d I Mb
	Gas	1-2	II2G	Ex d IIC or IIB+H <sub>2</sub> Gb - Ex e IIC Gb
	Dusts	21-22	II2D	Ex tb IIIC Db

Degree of Protection  
IP66(\*)

Amb. Temp.

Standard  
Extended



-20°C  
-60°C



+40°C  
+60°C



Standards and Certificates



Directive 2014/34/EU (ATEX)

EN 60079-0 • EN 60079-1  
EN 60079-7 • EN 60079-31

U

INERIS 14 ATEX 9014U



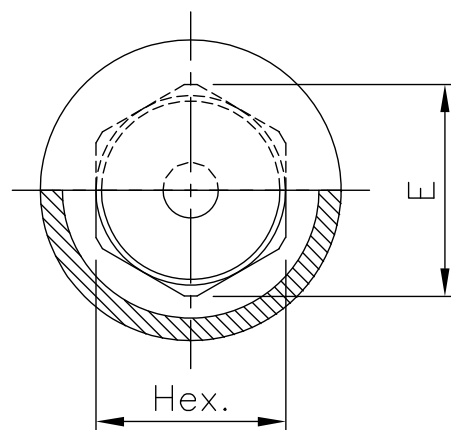
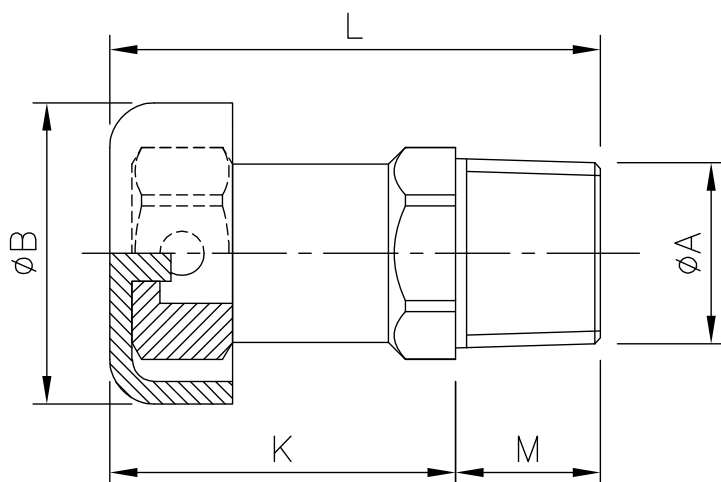
IEC 60079-0 • IEC 60079-1  
IEC 60079-7 • IEC 60079-31

IECEx INE 14.0045U

- Breathing valves.
- Particularly recommended for moist heat environments, they are used to allow the air passage from the internal to the external side of the explosionproof enclosure on which they are installed.
- Made completely in stainless steel AISI 316L.

Options

- Accessories see page C28.



Type	ØA Threading	ØB	M	K	Hex	E	L	Weight (g)
VD38S	3/8" NPT	27	13	31	17	19	44	70
VD1S	1/2" NPT	32	17	27	22	24	44	119
VD16S	M16x1,5	32	13	31	22	24	44	104
VD20S	M20x1,5	37	17	27	27	30	44	155

## NOTES

Breathing valves get same temperature class as the enclosure on which they are installed

Breathing valves shall be installed on enclosures with volume up to 160,6 dm<sup>3</sup> for group IIB+H<sub>2</sub> and up to 62,9 dm<sup>3</sup> for group IIC.

(\*) degree of protection IP66 is guaranteed when the plastic cap (VD03) is installed on the valve. Without it the degree of protection is IP64.

## Example: VD20S

Order Coding

Type

VD = breathing valve

Size and Threading

38 = 3/8" NPT

1 = 1/2" NPT

16 = M16x1,5

20 = M20x1,5

Material

S = stainless steel AISI 316L

