

Reflex type level gauge

Model : L100 series

Spec. sheet no. LD01-01

EAC

Description

Reflex liquid level gauge has a sturdily constructed body, with the glass and cover securely held by U-bolts to maintain a hermetic seal (see figure below). This type of level gauge features several parallel grooves cut into the glass surface that is in contact with the liquid. The resulting prismatic diffraction gives to appear white by reflection : liquids black by absorption thus the level of even transparent liquids can be clearly observed.

Low-medium and high-pressure type may be used according to application conditions and units may be manufactured using carbon steel, stainless steel or a wide variety of other materials for parts in contact with the liquid. Type L100 reflex gauges have a number of further advantages including light weight, availability of long visible lengths and low price.

Type



General type (Max. 4 MPa)



High pressure type (Max. 18 MPa)

Specification

Material

Carbon steel
LTCS
Stainless steel
A182-F11, 22, 5, 9, 91 and Monel
Titanium
Hastelloy

Visible length

90 ~ 3695 mm

Max. No. of section

10 sections

Vessel connection

½" to 1½" flanged or screw

Option

- Scale plate
 - Unit : Centimeter, Meter
- Vent
 - Needle valve
 - Gate valve
 - Globe valve
 - Nipple and cap
 - Plug
- Drain
 - Needle valve
 - Gate valve
 - Globe valve
 - Nipple and cap
 - Plug
- Bracket
 - Longer than 3,000 mm of C to C

WISE®

Main order

Ordering information

1. Base model

L100	Reflex level gauge
L110	Large chamber type reflex level gauge
L120	Zig-zag type reflex level gauge

2. Material

CC	Body - C.S / Cover - C.S
44	Body - 304SS / Cover - 304SS
4L	Body - 304L SS / Cover - 304SS
64	Body - 316SS / Cover - 304SS
6L	Body - 316L SS / Cover - 304SS
VV	Body - PVC / Cover - PVC
PP	Body - PP / Cover - PP
ZZ	Other

3. Vessel connection

A1	½" 150Lb RF
A2	¾" 150Lb RF
A3	1" 150Lb RF
A4	1½" 150Lb RF
A5	½" 300Lb RF
A6	¾" 300Lb RF
A7	1" 300Lb RF
A8	1½" 300Lb RF

4. Hook-up

TB	Top and Bottom
SR	Side and Side (Right)
SL	Side and Side (Left)
ZZ	Other

5. Gauge valve

S	Straight
O	Off-set
N	None

6. C to C / Visible Length / Glass

R00	320 - 369 / 90 / 115 * 1 (For Top-Bottom)
R01	370 - 394 / 140 / 165 * 1 (For Top-Bottom)
R02	395 - 424 / 165 / 190 * 1 (For Top-Bottom)
R03	425 - 454 / 195 / 220 * 1 (For Top-Bottom)
R04	455 - 484 / 225 / 250 * 1 (For Top-Bottom)
R05	485 - 504 / 255 / 280 * 1 (For Top-Bottom)
R06	505 - 524 / 275 / 300 * 1 (For Top-Bottom)
R07	525 - 544 / 295 / 320 * 1 (For Top-Bottom)
R08	545 - 604 / 315 / 340 * 1 (For Top-Bottom)
R50	140 - 189 / 90 / 115 * 1 (For Side-Side)
R51	190 - 214 / 140 / 165 * 1 (For Side-Side)
R52	215 - 244 / 165 / 190 * 1 (For Side-Side)
R53	245 - 274 / 195 / 220 * 1 (For Side-Side)
R54	275 - 304 / 225 / 250 * 1 (For Side-Side)
R55	305 - 324 / 255 / 280 * 1 (For Side-Side)
R56	325 - 344 / 275 / 300 * 1 (For Side-Side)
R57	345 - 364 / 295 / 320 * 1 (For Side-Side)
R58	365 - 424 / 315 / 340 * 1 (For Side-Side)
ZZZ	Other

7. Drain connection_Size and connection type

1	½" NPT(F)
2	½" S.W
3	¾" NPT(F)
4	¾" S.W
O	Other

8. Drain connection_Type

1	Only Plug
2	Valve with Plug
3	Valve with Elbow and Plug
4	Valve with End Cap
5	Valve with Elbow and End Cap
O	Other

9. Drain connection_Valve Type

X	None
G	Gate Valve, API 800Lb
L	Globe Valve, API 800Lb
B	Ball Valve
N	Needle Valve
O	Other

Sample ordering code

1	2	3	4	5	6	7	8	9
L100	CC	A1	TB	S	R00	1	CS	X



© WISE Control Inc. All rights reserved. ALL PRODUCT, PRODUCT SPECIFICATIONS AND DATA ARE SUBJECT TO CHANGE WITHOUT NOTICE TO IMPROVE RELIABILITY, FUNCTION OR DESIGN OR OTHERWISE.

10. Drain connection_Material

CC	C.S
44	304SS
4L	304L SS
64	316SS
6L	316L SS
VV	PVC
PP	PP
ZZ	Other

15. Option

L1	Scale Plate
L2	Non-Frosting
L3	Jacket
L4	Illuminator
L5	Support Bracket
L6	Renewable Seat
LO	Other
LX	None

11. Vent connection_Size and Connection type

1	½" NPT(F)
2	½" S.W
3	¾" NPT(F)
4	¾" S.W
O	Other

12. Vent connection_Type

1	Only Plug
2	Valve with Plug
3	Valve with Elbow and Plug
4	Valve with End Cap
5	Valve with Elbow and End Cap
O	Other

13. Vent connection_Valve type

X	None
G	Gate Valve, API 800Lb
L	Globe Valve, API 800Lb
B	Ball Valve
N	Needle Valve
O	Other

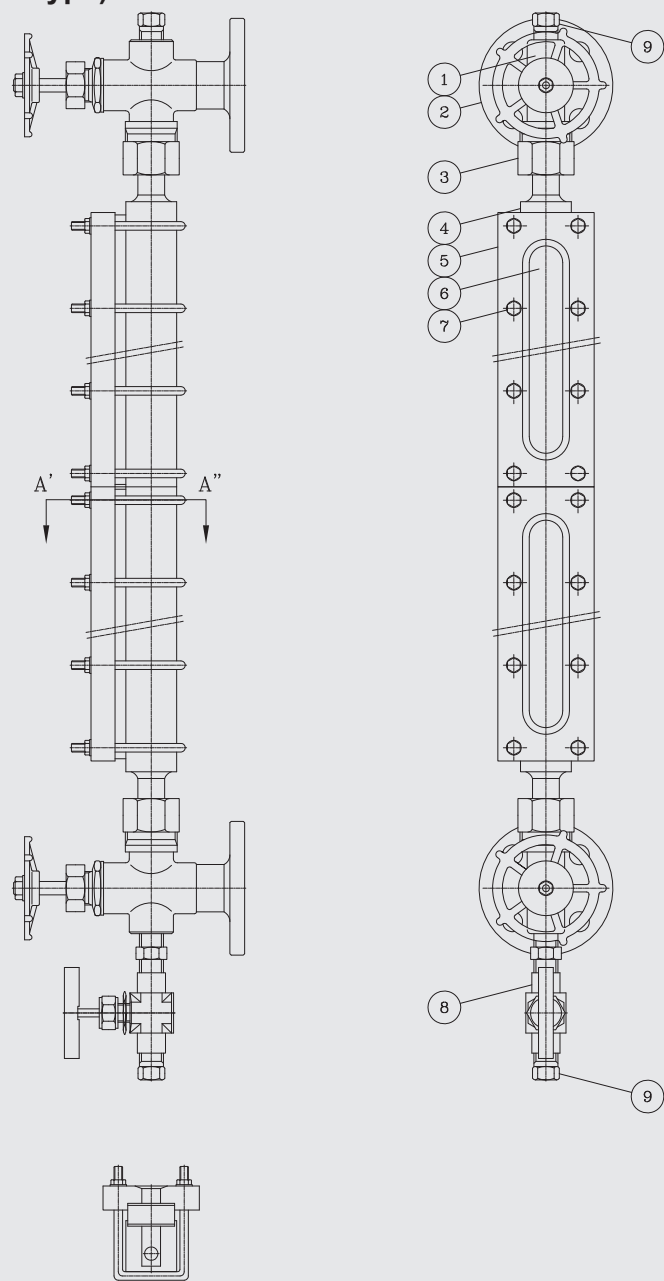
14. Vent connection_Material

CC	C.S
44	304SS
4L	304L SS
64	316SS
6L	316L SS
VV	PVC
PP	PP
ZZ	Other

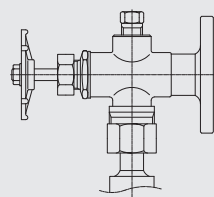
Sample ordering code

10	11	12	13	14	15
CC	1	1	X	CC	L1

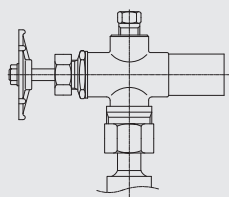
Model : L100 (Reflex type)



Section A'-A''



FLANGE TYPE



SOCKET WELD TYPE

NO.	DESCRIPTION	MATERIAL
1	GAUGE VALVE	C.S/304SS/316SS
2	VESSEL CONNECTION FLANGE	C.S/304SS/316SS
3	GAUGE CONNECTION	C.S/304SS/316SS
4	GAUGE BODY	C.S/304SS/316SS
5	COVER	C.S/304SS/316SS
6	GLASS	BOLISICATE
7	BOLT	A193 B7/B8
8	DRAIN VALVE	C.S/304SS/316SS
		C.S/304SS/316SS
9	PLUG	C.S/304SS/316SS