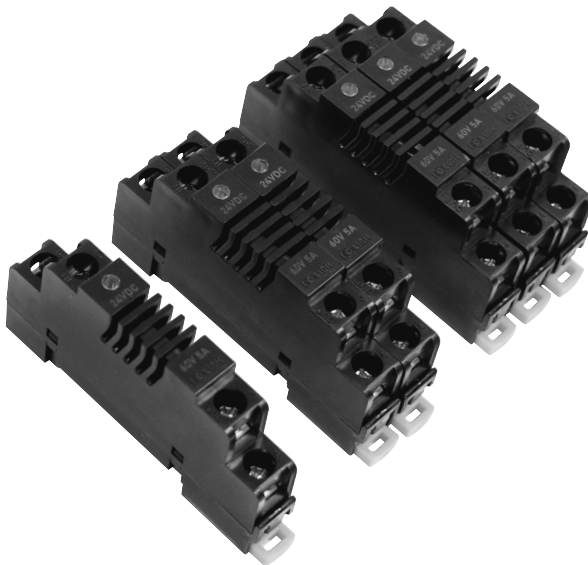


S1T-4P-202G 1Points, Output Load Capacity 5A

User's Guide



Thank you for purchasing product of SAMWON ACT.

Please check model of product that you purchase first, and read this manual prior to use it.

● Caution for Safety

⚠ Caution Case that results in serious damage in human body or equipment, and fire if user handles this equipment wrongly

⚠ Warning Case that results in slight damage in human body or equipment, and fire if user handles this equipment wrongly

⚠ Caution

1. When machining and wiring the mounting hole, do not allow foreign matter such as dust or wire covering to enter the connection terminal. Failure to do so may result in damage to the unit, heat, or ignition.
2. Be sure to shut off the power supply from the outside before mounting and wiring.

※ The connection cable for PLC of various makers is provided by us. Please refer to the catalogue or contact Head or branch office if you need more detail models and specifications.

⚠ Warning

1. Use within the specified temperature range. (−10℃ ~ +50℃) Damage to the outer case may occur.
2. Use within the specified rated voltage and rated current range.
This may result in fire or damage to the product.
3. Read this user's guide which is attached to product, and check product's nominal, specification, wiring diagram and how to handle prior to use.
4. Please make sure to check the diagram and the arrangement of the controller PIN (terminal) when wiring.
It may be the cause of malfunction or damage of this equipment and user's.

● Model Selection

Model	Installation Relay	IO Point(s)	Input Rated voltage	Common		Interface		Dimensions (W×Dmm)	Mounting method
				Input	Output	Input	Output		
S1T-4P-202G	PANASONIC AQZ202G	1Point (1a × 1)	24V DC	Individual Power (Short bar built)	Individual Com. (Short bar built)	Screw Terminal M3 Screw		10.0 × 67.0	DIN Rail (Channel)

● Relay Specification (Ambient temperature 25℃)

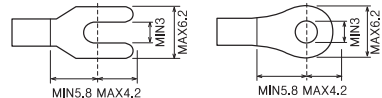
Item			AQZ202G
Input	LED forward current		50 mA
	LED reverse voltage		5V
	Peak forward current		1 A
	Power dissipation		75 mW
Output	Load voltage ^(Note)		60 V
	Continuous load current		6.0 A
	Peak load current		12.0 A
	Power dissipation		1.6 W
Total power dissipation			1.6W
I/O isolation voltage			2,500 Vrms
Transfer characteristics	Turn on time	Typical	3.8ms
		Maximum	10ms
	Turn off time	Typical	0.2ms
		Maximum	0.3ms
Country of origin			JAPAN

Note) Load voltage(Peak AC) recommends 48V(Max.).

● Material/Specification

Load Capacity	60V(Peak AC), 5A
Case	Modified PPO
P.C.B	Epoxy 1.6t / 2oz
Applicable wire	AWG22~16 (1.5mm ² /MAX)
Terminal Screw	M3 X 6L
Screw torque	7~8Kgf · cm (0.68~0.78N · m)
Ambient temperature	-10℃ ~ +50℃ (No condensation)

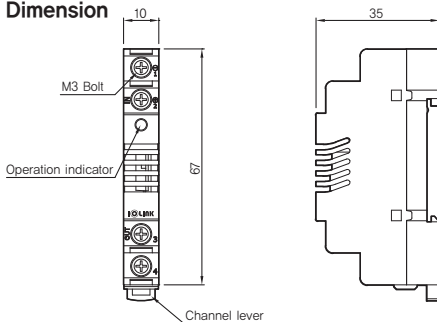
● Applicable crimp terminal



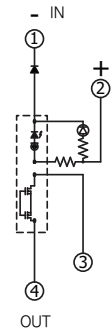
● Accessories



● Dimension



● Diagram



- ※ The above specifications are subject to change without notice.
- ※ Please contact HQ or branch office where you purchased product for A/S of this product or technique.

Major products

- Relay terminal 1, 2, 4, 6, 8, 16, 32point
- Interface terminal 20, 24, 26, 34, 40, 50, 57, 40 x 2pole
- PLC I/O Connecting cables MITSUBISHI, LSIS, CIMON, OMRON, FUJI, YOKOGAWA, HITACHI, SIEMENS, AB, etc.
- Servo Connecting cables Encoder cable, Power cable, Motion cable / MITSUBISHI, YASKAWA, OMRON, PANASONIC, LSIS, SAMSUNG, etc.
- Wiring harness / Special cable assembly



- HQ : 47035, 28, Daedong-ro, Sasang-gu, Busan, Korea
TEL : (051)320-7777 FAX : (051)312-2233
- SEOUL Office: 501, Iljik-dong, Gwangmyeong-si, Gyeonggi-do
TEL : (02)837-2230 FAX : (02)837-2226