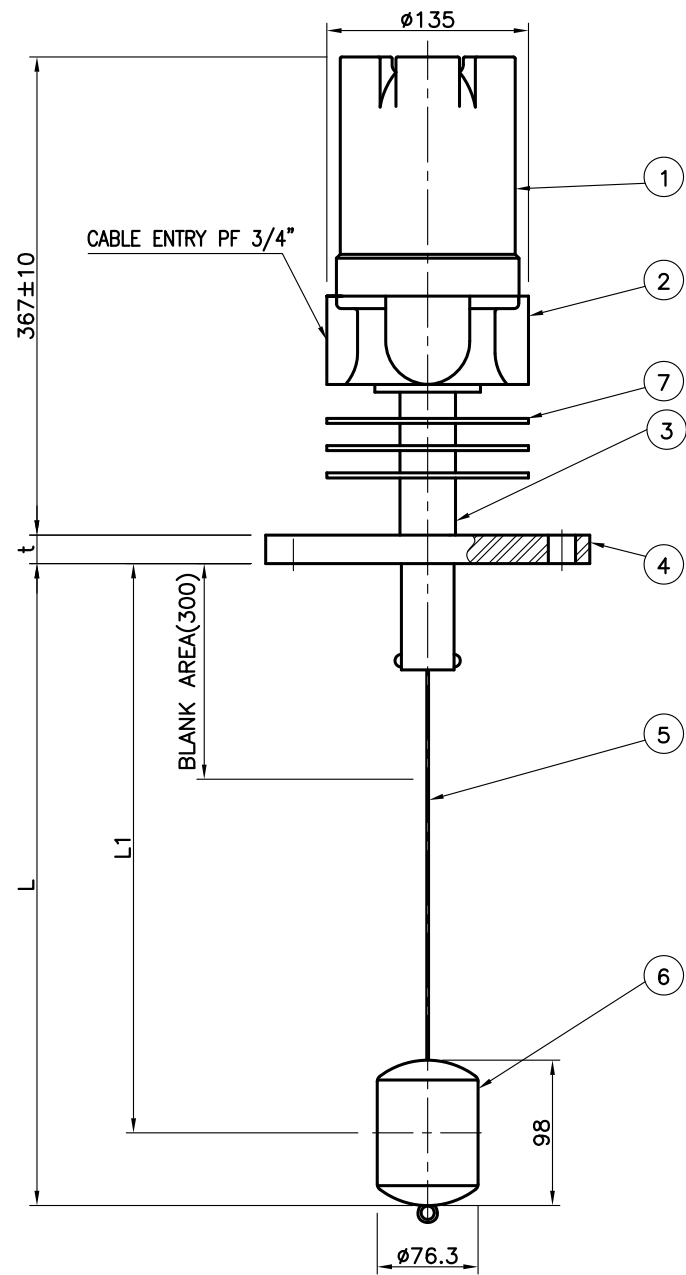
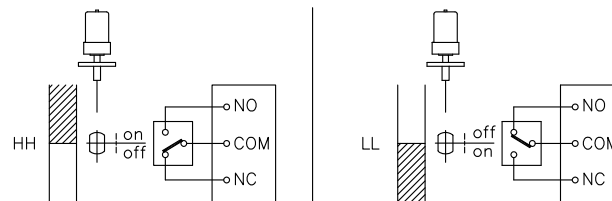


1000N-DWG-L10R-PS



1> 1Point (Alarm-SPDT) : HH or LL Alarm



DESIGN DATA

CODE	N/A		
UNIT	mm		
KIND OF FLUID	—		
PRESS.	DESIGN	Max. 30	Kg/Cm ²
	OPERATING	—	Kg/Cm ²
TEMP. (SENSOR)	DESIGN	−40 ~ 230	°C
	OPERATING	—	°C
TEMP. (ELECTRONICS)	DESIGN	−40 ~ 80	°C
	OPERATING	—	°C
SP.GR.	0.7 ~ 1.3		
ENCLOSURE	EXPLOSION PROOF	Ex d IIC T6, IP66	
FLANGE SIZE	ANSI 150# 4" RF		
DISPLACER SIZE	ø76.3x98L		
CONTACT RATING	250V AC 5A		

TAG NO.	L	L1	L2	L3	L4
			—	—	—
			—	—	—
			—	—	—
			—	—	—

NOTES

7	COOLING FIN	AL	3		
6	DISPLACER	316SS	1		
5	WIRE	316SS	1		
4	FLANGE	316SS	1	ANSI 150# 4" RF	
3	STEM	316SS	1		
2	HOUSING	ADC12	1		
1	HOUSING COVER	AC2B	1		

NO	DESCRIPTION	MATERIAL	Q'TY	SPECIFICATION	REMARK
----	-------------	----------	------	---------------	--------

BILL OF MATERIAL

CUSTOMER	—
----------	---

PROJECT	—
---------	---

TITLE	DISPLACEMENT TYPE LEVEL SWITCH SMC-1-B-2-OP-3-A ASSEMBLY DRAWING
-------	--

MANUFACTURER	SeoJin Instech Co., Ltd.
--------------	--------------------------

SCALE	N/S	ERP CODE	—	Work Order No.	—	REV.	
DWG NO.	SJ-M013-DWG-AP004						

△					
△					
△					
△					
△	FOR APPROVAL				
REV.	DESCRIPTION	DATE	DESIGNED	REVIEWED	APPROVED