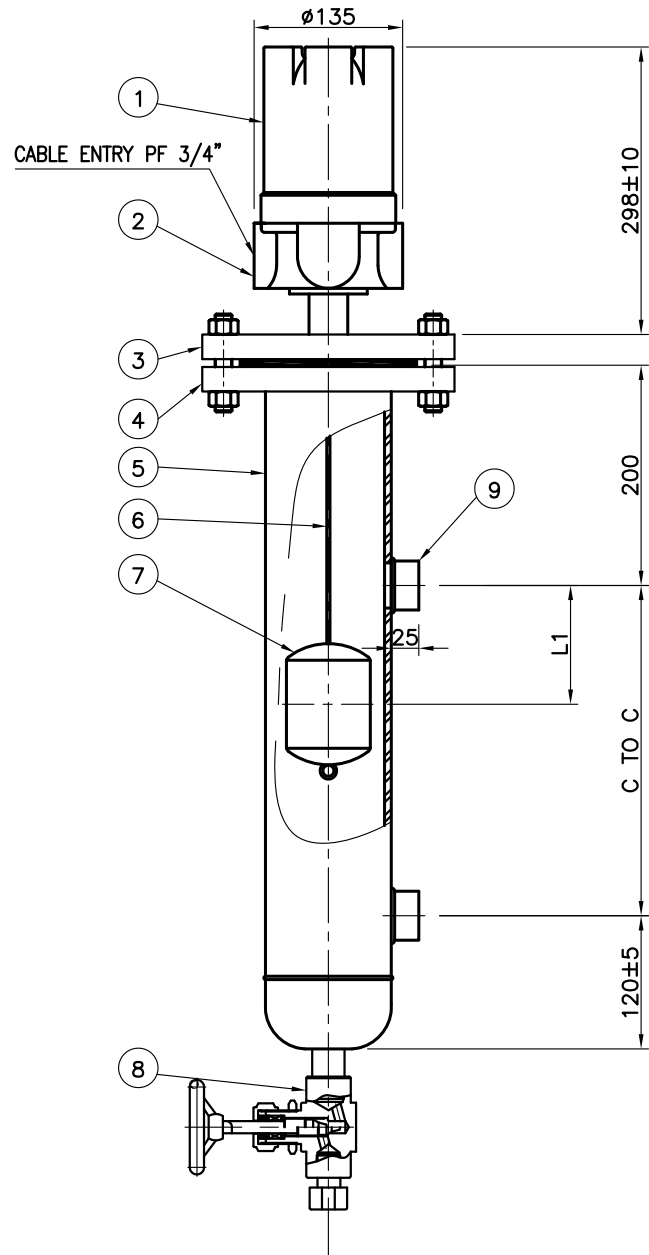
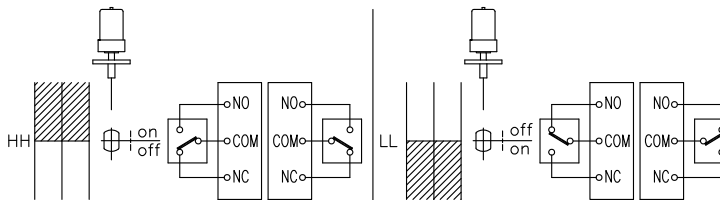


SJ-M013-DWG-AP022



2> 1Point (Alarm-DPDT) : HH or LL Alarm



DESIGN DATA

CODE	N/A				
UNIT	mm				
KIND OF FLUID	—				
PRESS.	DESIGN	Max. 10	Kg/Cm ²		
	OPERATING	—	Kg/Cm ²		
TEMP. (SENSOR)	DESIGN	−40 ~ 120	°C		
	OPERATING	—	°C		
TEMP. (ELECTRONICS)	DESIGN	−40 ~ 80	°C		
	OPERATING	—	°C		
SP.GR.	0.7 ~ 1.3				
ENCLOSURE	WEATHER PROOF				
DISPLACER SIZE	ø76.3x98L				
CONTACT RATING	250V AC 10A				
TAG NO.	C TO C	L1	L2	L3	L4
			—	—	—
			—	—	—
			—	—	—
			—	—	—

NOTES

- CHAMBER ORDERING INFORMATION.
SMC-1-A-2

9	SIDE CONNECTION	A105	2	1" SW	
8	DRAIN VALVE	A105	1	NPT 1/2"	
7	DISPLACER	316SS	1		
6	WIRE	316SS	1		
5	CHAMBER	A105 / A234 WFB	1	4" Sch.40	
4	CHAMBER FLANGE	A105	1	ANSI 150# 4" RF	
3	SENSOR FLANGE	A105	1		
2	HOUSING	ADC12	1		
1	HOUSING COVER	AC2B	1		
NO	DESCRIPTION	MATERIAL	Q'TY	SPECIFICATION	REMARK

BILL OF MATERIAL

CUSTOMER	—			
PROJECT	—			
TITLE	DISPLACEMENT TYPE LEVEL SWITCH SMC-2-A-2-OP-3-A ASSEMBLY DRAWING			
MANUFACTURER	SeoJin Instech Co., Ltd.			
SCALE	1:1	ERP CODE	—	Work Order No. —
REV.	N/A			
DWG NO.	SJ-M013-DWG-AP022			

△					
△					
△					
△					
△	FOR APPROVAL				
REV.	DESCRIPTION	DATE	DESIGNED	REVIEWED	APPROVED