

ELECTRICAL CONNECTION DIAGRAM

TOTAL Q'TY : - SETS

NO.	TAG NO.	FLUID(UPPER/LOWER)	OPER. PRESS. MAX.(Barg)	OPER. TEMP. MAX.(°C)	RATING	C TO C (MEASURING RANGE)	CONNECTION	HEAD ORIENTATION	ACCURACY	Q'TY
1	-	-	-	-	150#	-	ANSI 150# 2" RF (SIDE-SIDE)	RIGHT	±0.5% F.S	- SETS

△										
△										
△										
△										
△	FOR INFORMATION DWG									
REV.	DESCRIPTION	DATE	DESIGNED	CHECKED	REVIEWED	APPROVED				

DESIGN DATA

CODE	ASME B31.1		
UNIT	mm		
ENCLOSURE		WEATHER PROOF	IP65
TORQUE TUBE MAT'L		316LSS	
POWER CONSUMPTION		25mA MAX.	
POWER SUPPLY		24V DC	
OUTPUT SIGNAL		4~20mA, HART COMM.	

NOTES

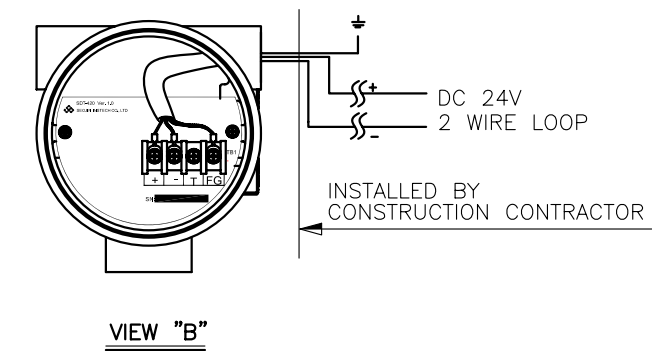
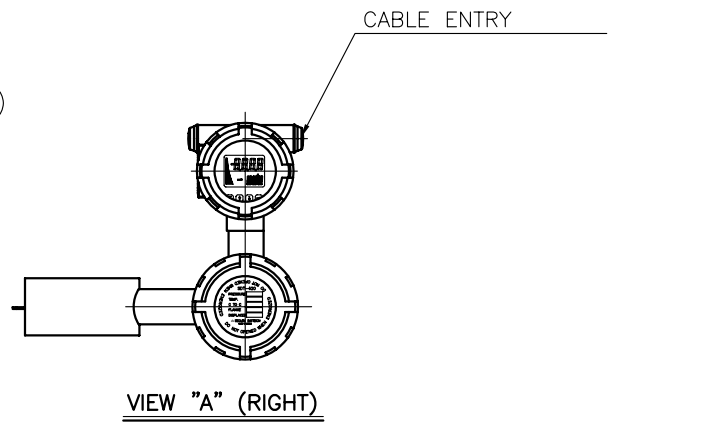
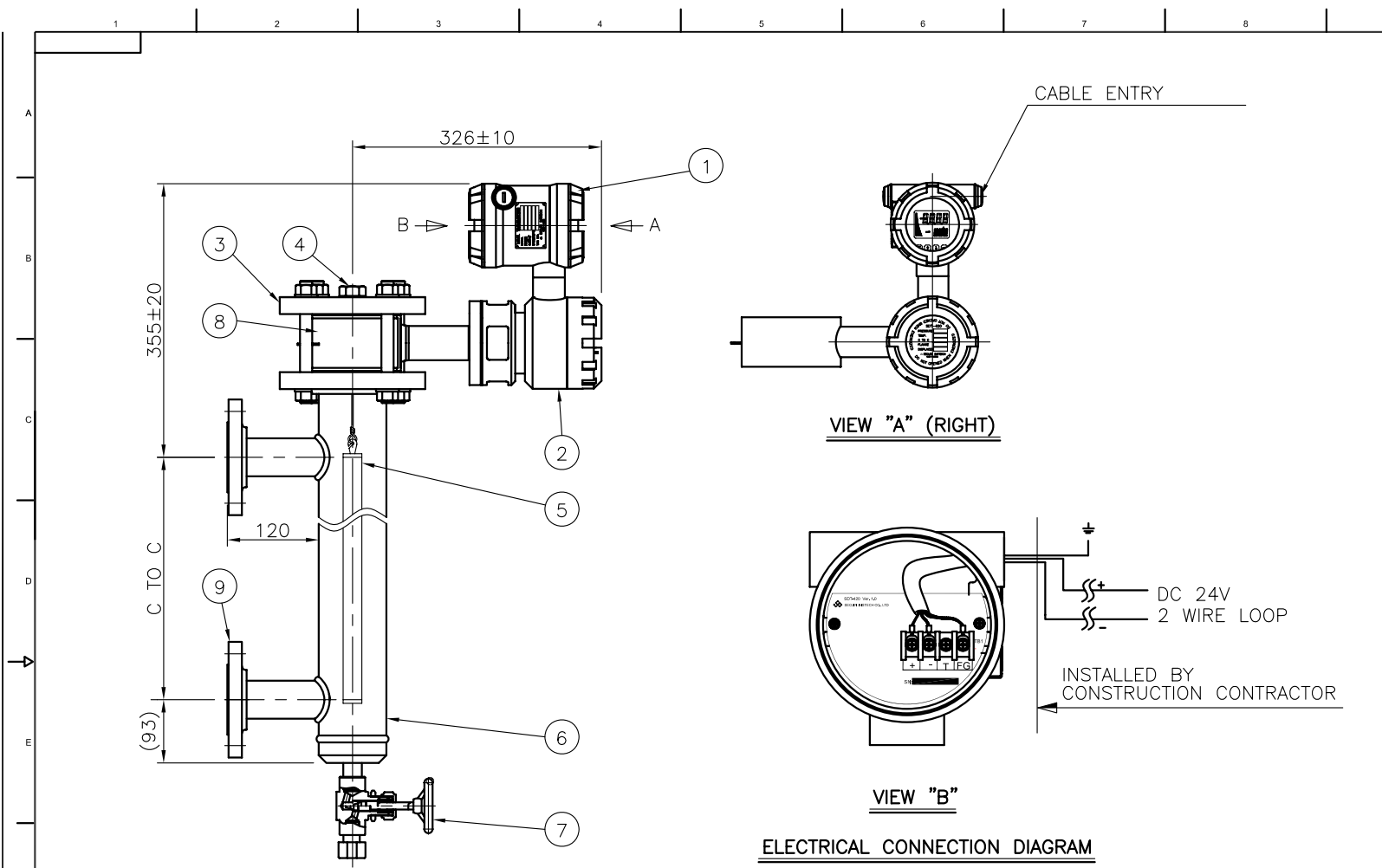
1. REFER TO INSTALLATION MANUAL WHEN YOU SET IT UP
2. TYPICAL CABLE 2 OFF TWISTED PAIR MIN. 22AWG STRANDED CORE WITH OVERALL SHIELDING AS REQUIRED
3. CHAMBER ORDERING INFORMATIONSDT-420CH-A-1-B-1-A-1-A-3-A-1

9	CONNECTION FLANGE	A105	2		
8	TORSION BAR GUARD	A105	1		
7	GLOBE VALVE & PLUG	A105	1	NPT 1/2"	
6	CHAMBER	A106B	1	3" Sch40	
5	DISPLACER	316LSS	1		
4	VENT PLUG	A105	1	NPT 3/4"	
3	BLIND FLANGE	A105	1	ANSI 150# 3" RF	
2	ADJUST HOUSING	ADC12	1		
1	DISPLAYER	ADC12	1		
NO	DESCRIPTION	MATERIAL	Q'TY	SPECIFICATION	REMARK

BILL OF MATERIAL

CUSTOMER	-
PROJECT	-
TITLE	DISPLACEMENT TYPE LEVEL TRANSMITTER SDT-420-31-A-1-A-1-A-1-A-1-A-1-A ASSEMBLY DRAWING
MANUFACTURER	SeoJin Instech Co., Ltd.

SCALE		ERP CODE	-	Work Order No.	-	REV.	
N/S	DWG NO.						



ELECTRICAL CONNECTION DIAGRAM

TOTAL Q'TY : - SETS

NO.	TAG NO.	FLUID(UPPER/LOWER)	OPER. PRESS. MAX.(Barg)	OPER. TEMP. MAX.(°C)	RATING	C TO C (MEASURING RANGE)	CONNECTION	HEAD ORIENTATION	ACCURACY	Q'TY
1	-	-	-	-	150#	-	ANSI 150# 2" RF (SIDE-SIDE)	RIGHT	±0.5% F.S	- SETS

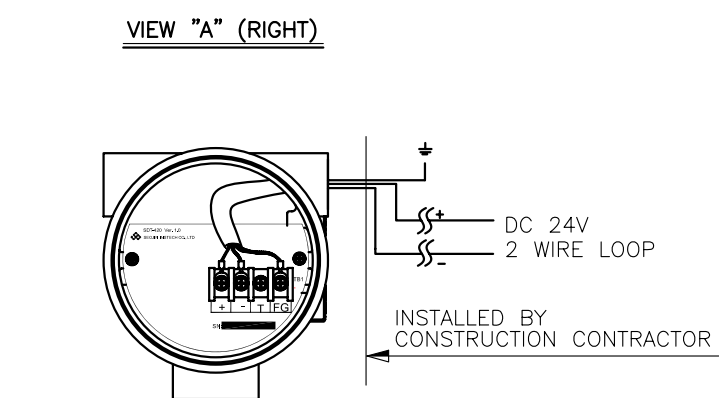
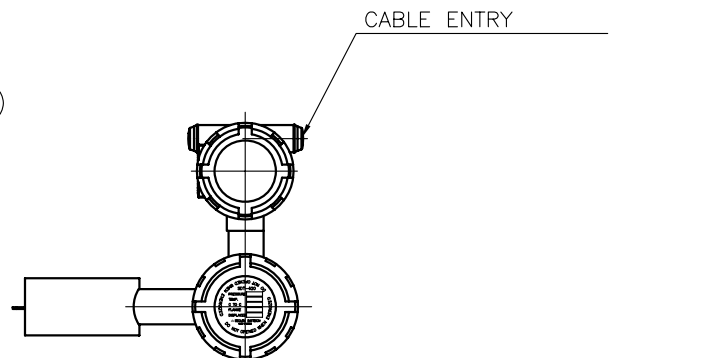
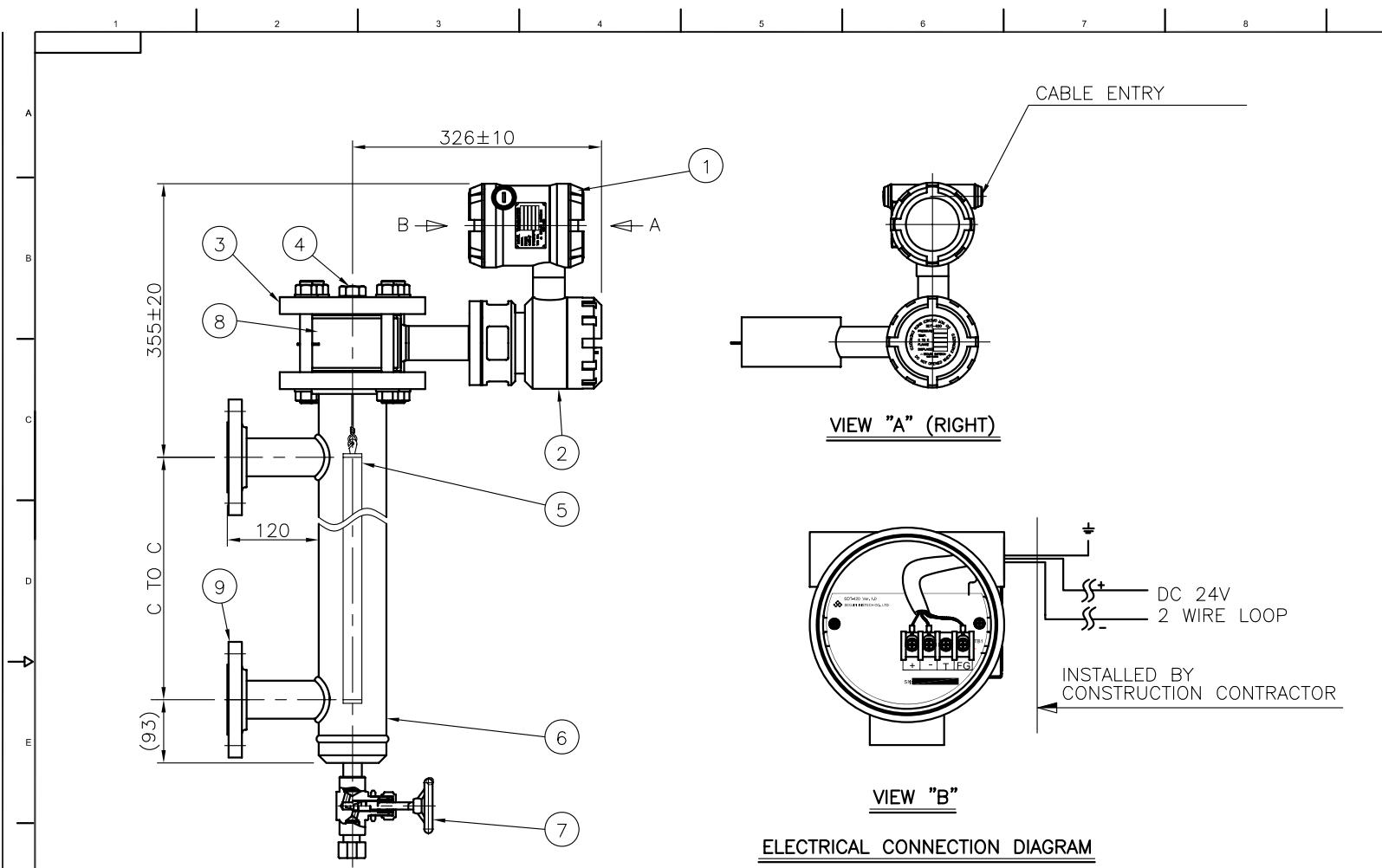
△										
△										
△										
△										
△	FOR INFORMATION DWG									
REV.	DESCRIPTION	DATE	DESIGNED	CHECKED	REVIEWED	APPROVED				

DESIGN DATA			
CODE	ASME B31.1		
UNIT	mm		
ENCLOSURE	EXPLOSION PROOF	Ex d IIC T6, IP67	
TORQUE TUBE MAT'L	316LSS		
POWER CONSUMPTION	25mA MAX.		
POWER SUPPLY	24V DC		
OUTPUT SIGNAL	4~20mA, HART COMM.		

- NOTES
- REFER TO INSTALLATION MANUAL WHEN YOU SET IT UP
 - TYPICAL CABLE 2 OFF TWISTED PAIR MIN. 22AWG STRANDED CORE WITH OVERALL SHIELDING AS REQUIRED
 - CHAMBER ORDERING INFORMATIONSDT-420CH-A-1-B-1-A-1-A-3-A-1

9	CONNECTION FLANGE	A105	2		
8	TORSION BAR GUARD	A105	1		
7	GLOBE VALVE & PLUG	A105	1	NPT 1/2"	
6	CHAMBER	A106B	1	3" Sch40	
5	DISPLACER	316LSS	1		
4	VENT PLUG	A105	1	NPT 3/4"	
3	BLIND FLANGE	A105	1	ANSI 150# 3" RF	
2	ADJUST HOUSING	ADC12	1		
1	DISPLAYER	ADC12	1		
NO	DESCRIPTION	MATERIAL	Q'TY	SPECIFICATION	REMARK

BILL OF MATERIAL				
CUSTOMER				
PROJECT				
TITLE				
DISPLACEMENT TYPE LEVEL TRANSMITTER SDT-420-31-A-1-A-1-A-2-A-1-A ASSEMBLY DRAWING				
MANUFACTURER				
SeoJin Instech Co.,Ltd.				
SCALE	ERP CODE	Work Order No.	REV.	
N/S				



ELECTRICAL CONNECTION DIAGRAM

TOTAL Q'TY : - SETS

NO.	TAG NO.	FLUID(UPPER/LOWER)	OPER. PRESS. MAX.(Barg)	OPER. TEMP. MAX.(°C)	RATING	C TO C (MEASURING RANGE)	CONNECTION	HEAD ORIENTATION	ACCURACY	Q'TY
1	-	-	-	-	150#	-	ANSI 150# 2" RF (SIDE-SIDE)	RIGHT	±0.5% F.S	- SETS

△									
△									
△									
△									
△	FOR INFORMATION DWG								
REV.	DESCRIPTION	DATE	DESIGNED	CHECKED	REVIEWED	APPROVED			

DESIGN DATA

CODE	ASME B31.1
UNIT	mm
ENCLOSURE	EXPLOSION PROOF Ex d IIC T6, IP67
TORQUE TUBE MAT'L	316LSS
POWER CONSUMPTION	25mA MAX.
POWER SUPPLY	24V DC
OUTPUT SIGNAL	4~20mA, HART COMM.

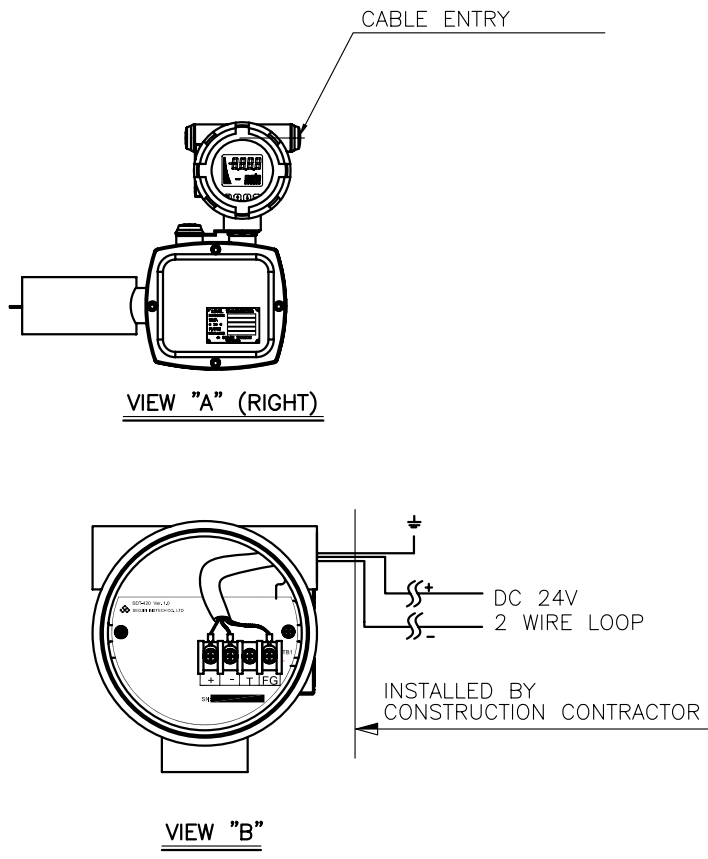
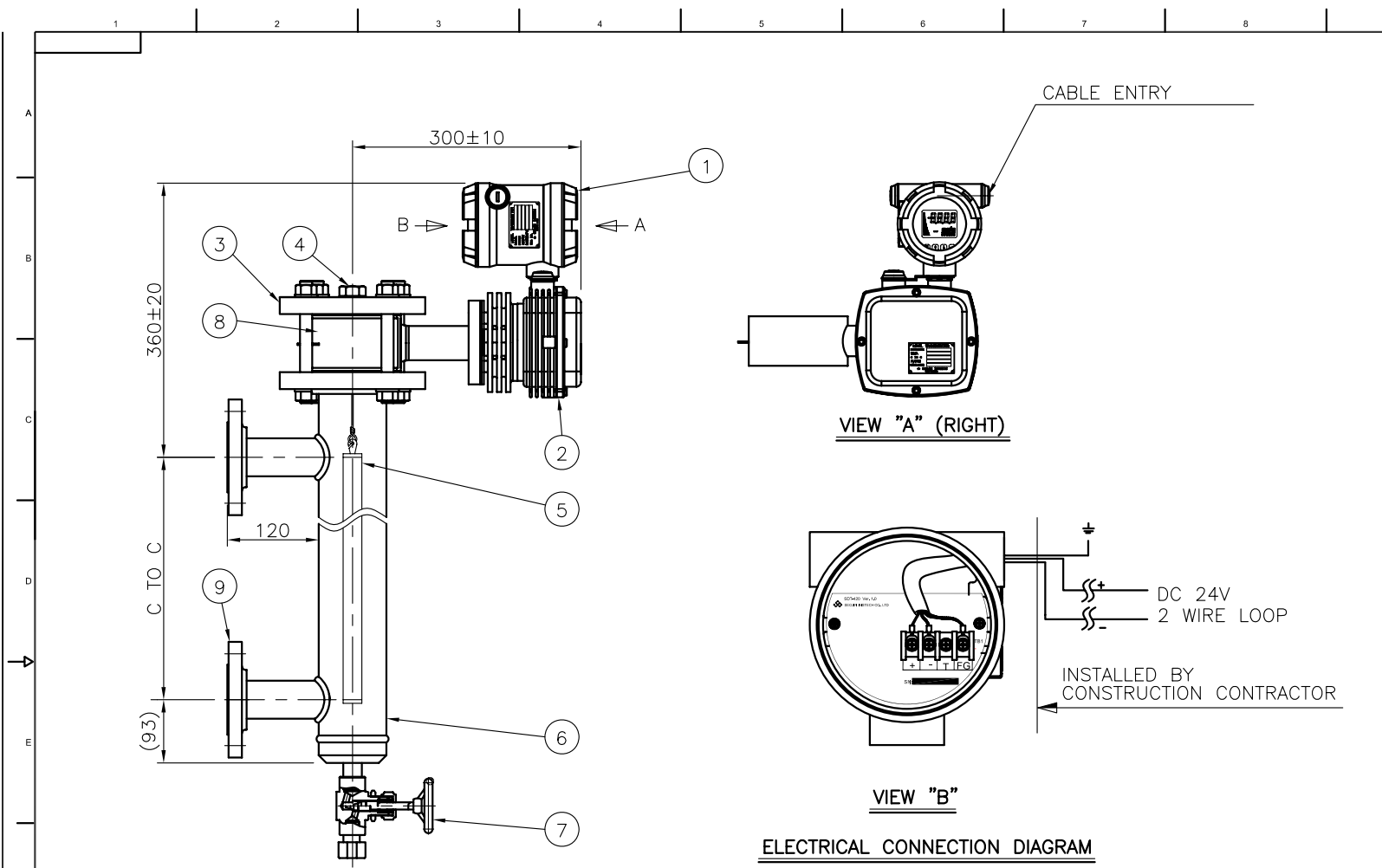
NOTES

- REFER TO INSTALLATION MANUAL WHEN YOU SET IT UP
- TYPICAL CABLE 2 OFF TWISTED PAIR MIN. 22AWG STRANDED CORE WITH OVERALL SHIELDING AS REQUIRED
- CHAMBER ORDERING INFORMATIONSDT-420CH-A-1-B-1-A-1-A-3-A-1

9	CONNECTION FLANGE	A105	2		
8	TORSION BAR GUARD	A105	1		
7	GLOBE VALVE & PLUG	A105	1	NPT 1/2"	
6	CHAMBER	A106B	1	3" Sch40	
5	DISPLACER	316LSS	1		
4	VENT PLUG	A105	1	NPT 3/4"	
3	BLIND FLANGE	A105	1	ANSI 150# 3" RF	
2	ADJUST HOUSING	ADC12	1		
1	DISPLAYER	ADC12	1		
NO	DESCRIPTION	MATERIAL	Q'TY	SPECIFICATION	REMARK

BILL OF MATERIAL

CUSTOMER	-
PROJECT	-
TITLE	DISPLACEMENT TYPE LEVEL TRANSMITTER SDT-420-31-A-1-A-1-A-2-A-1-A ASSEMBLY DRAWING
MANUFACTURER	SeoJin Instech Co., Ltd.
SCALE	N/S
ERP CODE	-
Work Order No.	-
REV.	



ELECTRICAL CONNECTION DIAGRAM

TOTAL Q'TY : - SETS

NO.	TAG NO.	FLUID(UPPER/LOWER)	OPER. PRESS. MAX.(Barg)	OPER. TEMP. MAX.(°C)	RATING	C TO C (MEASURING RANGE)	CONNECTION	HEAD ORIENTATION	ACCURACY	Q'TY
1	-	-	-	-	150#	-	ANSI 150# 2" RF (SIDE-SIDE)	RIGHT	±0.5% F.S	- SETS

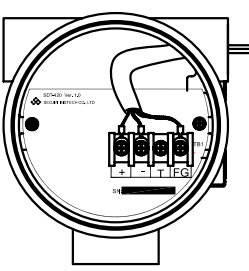
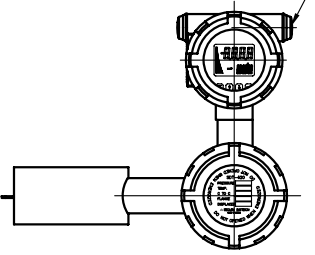
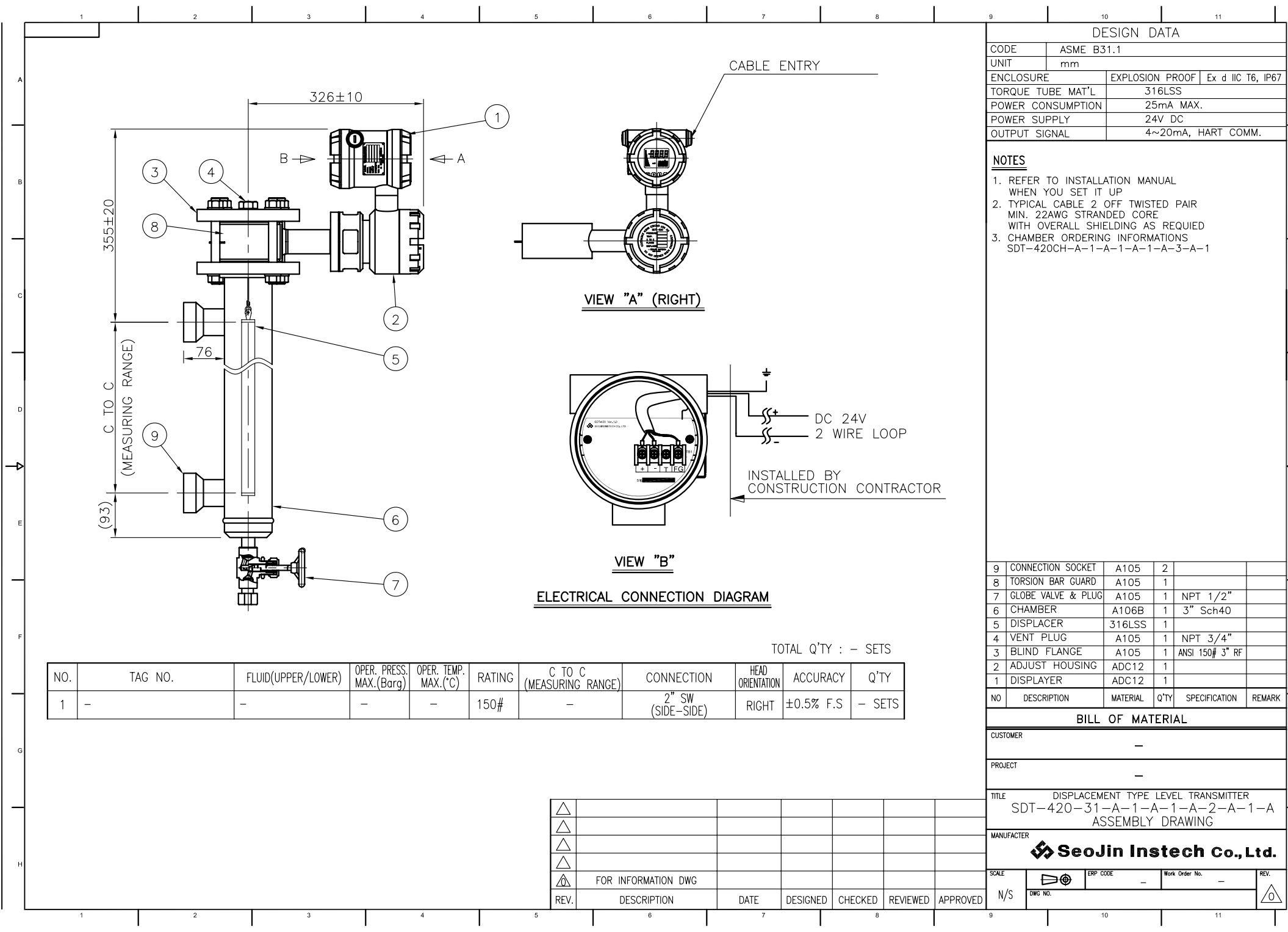
△										
△										
△										
△										
△	FOR INFORMATION DWG									
REV.	DESCRIPTION	DATE	DESIGNED	CHECKED	REVIEWED	APPROVED				

DESIGN DATA			
CODE	ASME B31.1		
UNIT	mm		
ENCLOSURE	INTRINSIC SAFETY	Ex ia IIC T6,T6 IP65	
TORQUE TUBE MAT'L	316LSS		
POWER CONSUMPTION	25mA MAX.		
POWER SUPPLY	24V DC		
OUTPUT SIGNAL	4~20mA, HART COMM.		

- NOTES
- REFER TO INSTALLATION MANUAL WHEN YOU SET IT UP
 - TYPICAL CABLE 2 OFF TWISTED PAIR MIN. 22AWG STRANDED CORE WITH OVERALL SHIELDING AS REQUIRED
 - CHAMBER ORDERING INFORMATIONSDT-420CH-A-1-B-1-A-1-A-3-A-1

9	CONNECTION FLANGE	A105	2		
8	TORSION BAR GUARD	A105	1		
7	GLOBE VALVE & PLUG	A105	1	NPT 1/2"	
6	CHAMBER	A106B	1	3" Sch40	
5	DISPLACER	316LSS	1		
4	VENT PLUG	A105	1	NPT 3/4"	
3	BLIND FLANGE	A105	1	ANSI 150# 3" RF	
2	ADJUST HOUSING	ADC12	1		
1	DISPLAYER	ADC12	1		
NO	DESCRIPTION	MATERIAL	Q'TY	SPECIFICATION	REMARK

BILL OF MATERIAL				
CUSTOMER				
PROJECT				
TITLE				
DISPLACEMENT TYPE LEVEL TRANSMITTER SDT-420-31-A-1-A-1-A-3-A-1-A ASSEMBLY DRAWING				
MANUFACTURER				
SeoJin Instech Co., Ltd.				
SCALE	ERP CODE	Work Order No.	REV.	
N/S	DWG NO.			



ELECTRICAL CONNECTION DIAGRAM

TOTAL Q'TY : - SETS

NO.	TAG NO.	FLUID(UPPER/LOWER)	OPER. PRESS. MAX.(Barg)	OPER. TEMP. MAX.(°C)	RATING	C TO C (MEASURING RANGE)	CONNECTION	HEAD ORIENTATION	ACCURACY	Q'TY
1	-	-	-	-	150#	-	2" SW (SIDE-SIDE)	RIGHT	±0.5% F.S	- SETS

△									
△									
△									
△									
△	FOR INFORMATION DWG								
REV.	DESCRIPTION	DATE	DESIGNED	CHECKED	REVIEWED	APPROVED			

DESIGN DATA

CODE	ASME B31.1
UNIT	mm
ENCLOSURE	EXPLOSION PROOF Ex d IIC T6, IP67
TORQUE TUBE MAT'L	316LSS
POWER CONSUMPTION	25mA MAX.
POWER SUPPLY	24V DC
OUTPUT SIGNAL	4~20mA, HART COMM.

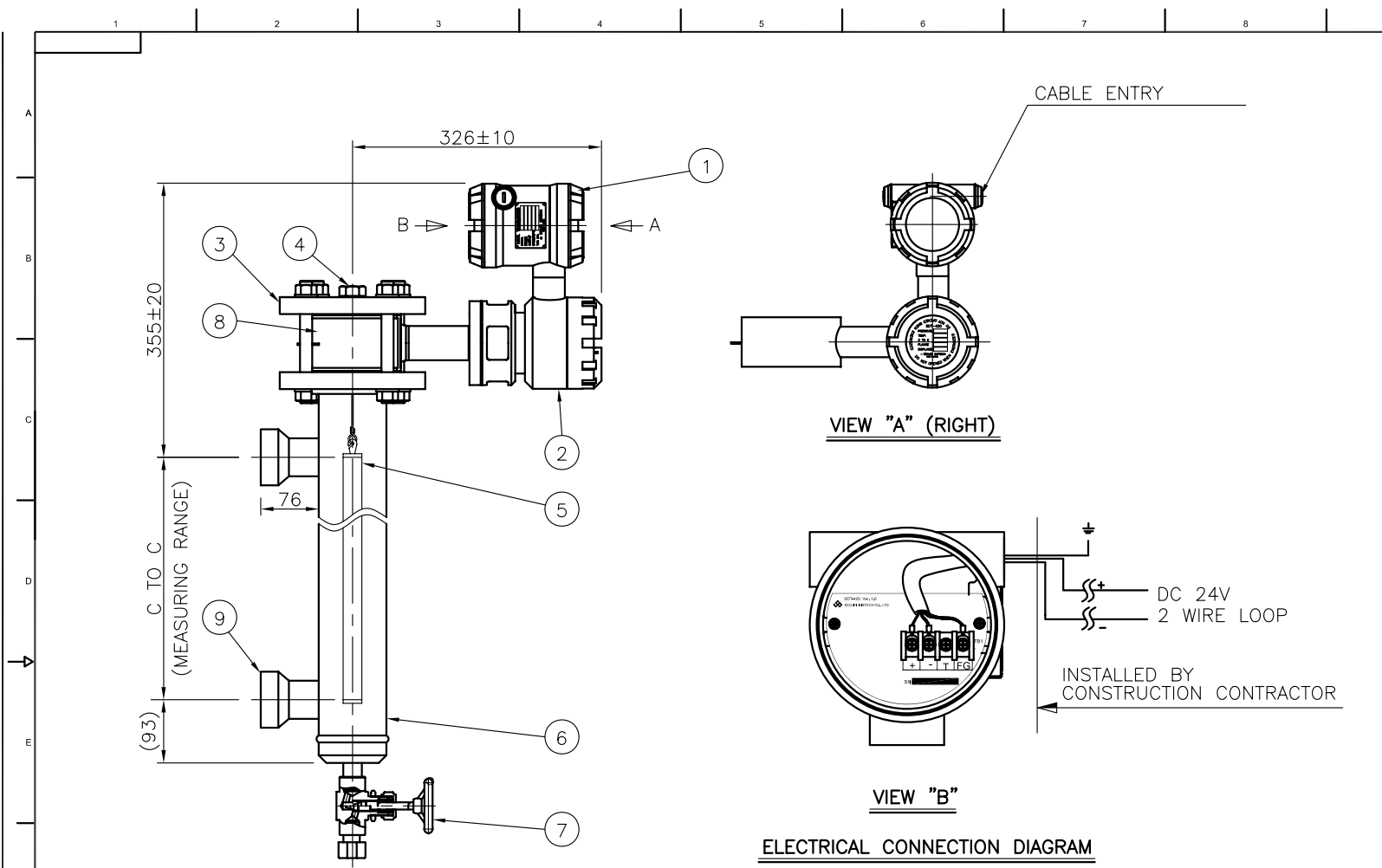
NOTES

- REFER TO INSTALLATION MANUAL WHEN YOU SET IT UP
- TYPICAL CABLE 2 OFF TWISTED PAIR MIN. 22AWG STRANDED CORE WITH OVERALL SHIELDING AS REQUIRED
- CHAMBER ORDERING INFORMATIONSDT-420CH-A-1-A-1-A-1-A-3-A-1

9	CONNECTION SOCKET	A105	2		
8	TORSION BAR GUARD	A105	1		
7	GLOBE VALVE & PLUG	A105	1	NPT 1/2"	
6	CHAMBER	A106B	1	3" Sch40	
5	DISPLACER	316LSS	1		
4	VENT PLUG	A105	1	NPT 3/4"	
3	BLIND FLANGE	A105	1	ANSI 150# 3" RF	
2	ADJUST HOUSING	ADC12	1		
1	DISPLAYER	ADC12	1		
NO	DESCRIPTION	MATERIAL	Q'TY	SPECIFICATION	REMARK

BILL OF MATERIAL

CUSTOMER	-
PROJECT	-
TITLE	DISPLACEMENT TYPE LEVEL TRANSMITTER SDT-420-31-A-1-A-1-A-2-A-1-A ASSEMBLY DRAWING
MANUFACTURER	SeoJin Instech Co., Ltd.
SCALE	N/S
ERP CODE	-
Work Order No.	-
REV.	



ELECTRICAL CONNECTION DIAGRAM

TOTAL Q'TY : - SETS

NO.	TAG NO.	FLUID(UPPER/LOWER)	OPER. PRESS. MAX.(Barg)	OPER. TEMP. MAX.(°C)	RATING	C TO C (MEASURING RANGE)	CONNECTION	HEAD ORIENTATION	ACCURACY	Q'TY
1	-	-	-	-	150#	-	2" SW (SIDE-SIDE)	RIGHT	±0.5% F.S	- SETS

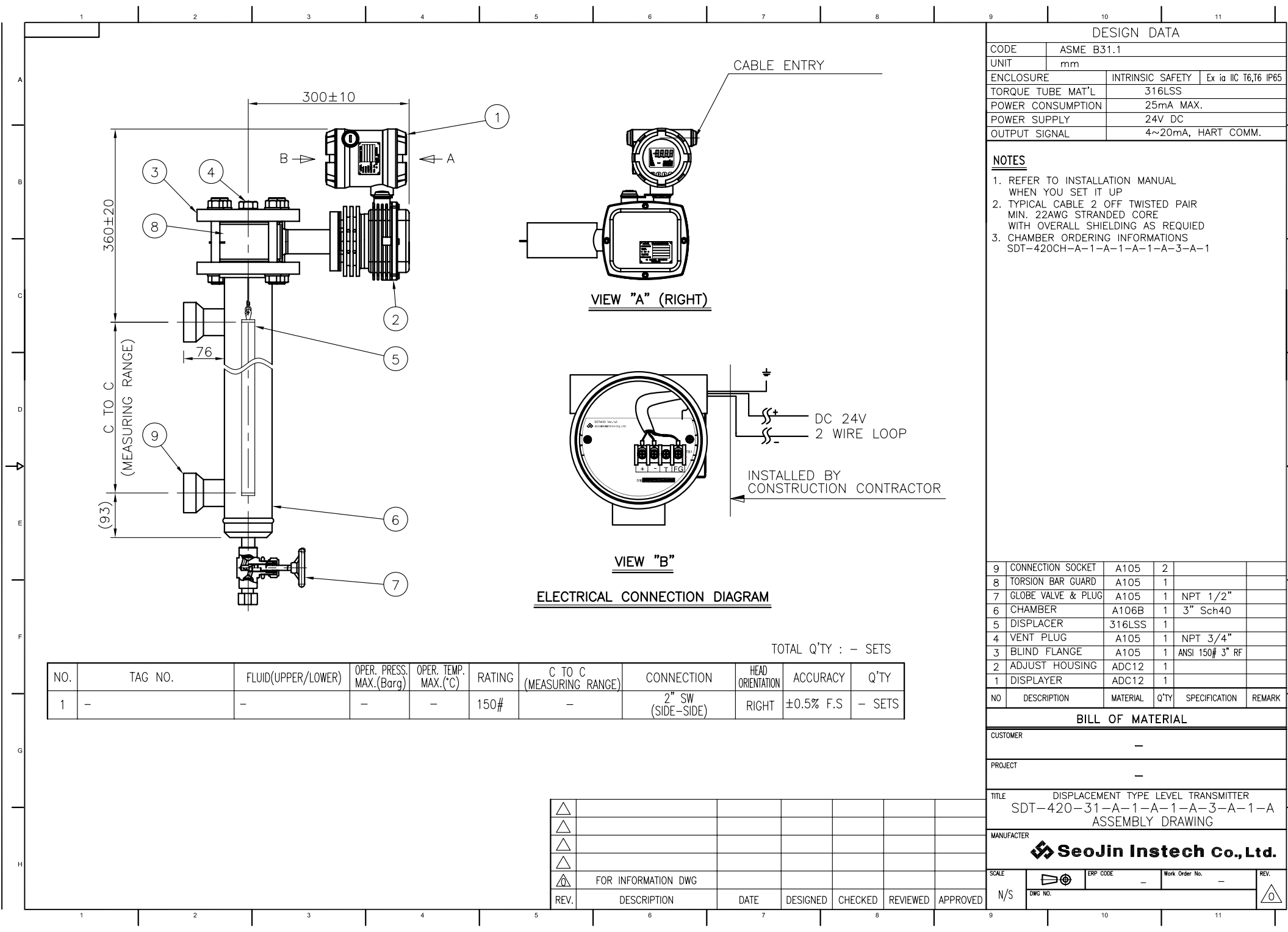
△									
△									
△									
△									
△	FOR INFORMATION DWG								
REV.	DESCRIPTION	DATE	DESIGNED	CHECKED	REVIEWED	APPROVED			

DESIGN DATA			
CODE	ASME B31.1		
UNIT	mm		
ENCLOSURE		EXPLOSION PROOF	Ex d IIC T6, IP67
TORQUE TUBE MAT'L		316LSS	
POWER CONSUMPTION		25mA MAX.	
POWER SUPPLY		24V DC	
OUTPUT SIGNAL		4~20mA, HART COMM.	

- NOTES
- REFER TO INSTALLATION MANUAL WHEN YOU SET IT UP
 - TYPICAL CABLE 2 OFF TWISTED PAIR MIN. 22AWG STRANDED CORE WITH OVERALL SHIELDING AS REQUIRED
 - CHAMBER ORDERING INFORMATIONSDT-420CH-A-1-A-1-A-1-A-3-A-1

9	CONNECTION SOCKET	A105	2		
8	TORSION BAR GUARD	A105	1		
7	GLOBE VALVE & PLUG	A105	1	NPT 1/2"	
6	CHAMBER	A106B	1	3" Sch40	
5	DISPLACER	316LSS	1		
4	VENT PLUG	A105	1	NPT 3/4"	
3	BLIND FLANGE	A105	1	ANSI 150# 3" RF	
2	ADJUST HOUSING	ADC12	1		
1	DISPLAYER	ADC12	1		
NO	DESCRIPTION	MATERIAL	Q'TY	SPECIFICATION	REMARK

BILL OF MATERIAL				
CUSTOMER				
PROJECT				
TITLE				
DISPLACEMENT TYPE LEVEL TRANSMITTER SDT-420-31-A-1-A-1-A-2-A-1-A ASSEMBLY DRAWING				
MANUFACTURER				
SeoJin Instech Co.,Ltd.				
SCALE	ERP CODE	Work Order No.	REV.	
N/S				



ELECTRICAL CONNECTION DIAGRAM

TOTAL Q'TY : - SETS

NO.	TAG NO.	FLUID(UPPER/LOWER)	OPER. PRESS. MAX.(Barg)	OPER. TEMP. MAX.(°C)	RATING	C TO C (MEASURING RANGE)	CONNECTION	HEAD ORIENTATION	ACCURACY	Q'TY
1	-	-	-	-	150#	-	2" SW (SIDE-SIDE)	RIGHT	±0.5% F.S	- SETS

△										
△										
△										
△										
△	FOR INFORMATION DWG									
REV.	DESCRIPTION	DATE	DESIGNED	CHECKED	REVIEWED	APPROVED				

DESIGN DATA

CODE	ASME B31.1		
UNIT	mm		
ENCLOSURE	INTRINSIC SAFETY		Ex ia IIC T6,T6 IP65
TORQUE TUBE MAT'L	316LSS		
POWER CONSUMPTION	25mA MAX.		
POWER SUPPLY	24V DC		
OUTPUT SIGNAL	4~20mA, HART COMM.		

NOTES

1. REFER TO INSTALLATION MANUAL WHEN YOU SET IT UP
2. TYPICAL CABLE 2 OFF TWISTED PAIR MIN. 22AWG STRANDED CORE WITH OVERALL SHIELDING AS REQUIRED
3. CHAMBER ORDERING INFORMATIONSDT-420CH-A-1-A-1-A-1-A-3-A-1

9	CONNECTION SOCKET	A105	2		
8	TORSION BAR GUARD	A105	1		
7	GLOBE VALVE & PLUG	A105	1	NPT 1/2"	
6	CHAMBER	A106B	1	3" Sch40	
5	DISPLACER	316LSS	1		
4	VENT PLUG	A105	1	NPT 3/4"	
3	BLIND FLANGE	A105	1	ANSI 150# 3" RF	
2	ADJUST HOUSING	ADC12	1		
1	DISPLAYER	ADC12	1		
NO	DESCRIPTION	MATERIAL	Q'TY	SPECIFICATION	REMARK

BILL OF MATERIAL

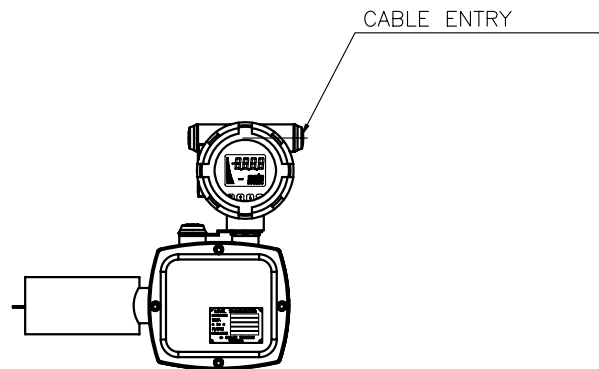
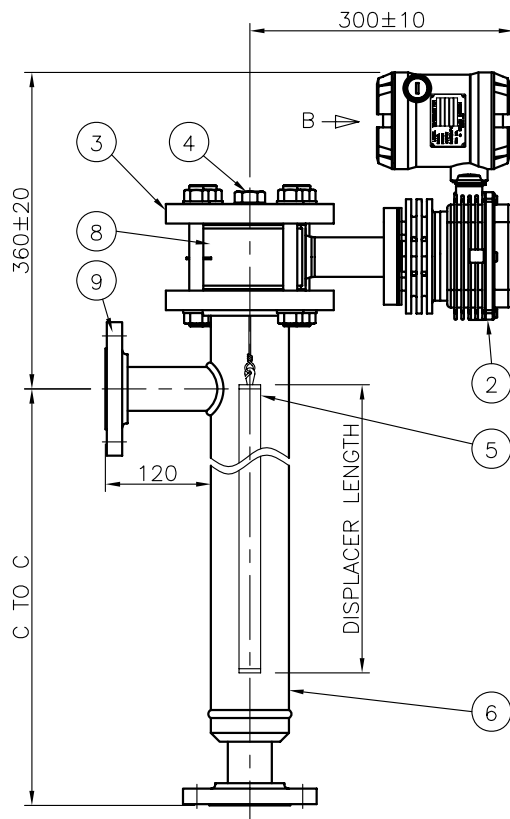
CUSTOMER -

PROJECT -

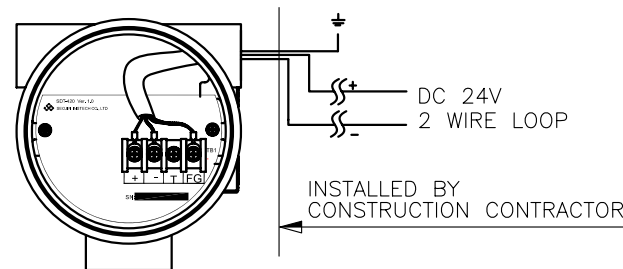
TITLE DISPLACEMENT TYPE LEVEL TRANSMITTER
SDT-420-31-A-1-A-1-A-3-A-1-A
ASSEMBLY DRAWING

MANUFACTURER **SeoJin Instech Co.,Ltd.**

SCALE	ERP CODE	Work Order No.	REV.
N/S			



VIEW "A" (RIGHT)



VIEW "B"

ELECTRICAL CONNECTION DIAGRAM

TOTAL Q'TY : - SETS

NO.	TAG NO.	FLUID(UPPER/LOWER)	OPER. PRESS. MAX.(Barg)	OPER. TEMP. MAX.(°C)	RATING	C TO C	DISPLACER LENGTH	CONNECTION	HEAD ORIENTATION	ACCURACY	Q'TY
1	-	-	-	-	150#	-	-	ANSI 150# 2" RF (SIDE-BOTTOM)	RIGHT	±0.5% F.S	- SETS

△											
△											
△											
△											
△	FOR INFORMATION DWG										
REV.	DESCRIPTION	DATE	DESIGNED	CHECKED	REVIEWED	APPROVED					

DESIGN DATA




CODE	ASME B31.1		
UNIT	mm		
ENCLOSURE		WEATHER PROOF	IP65
TORQUE TUBE MAT'L		316LSS	
POWER CONSUMPTION		25mA MAX.	
POWER SUPPLY		24V DC	
OUTPUT SIGNAL		4~20mA, HART COMM.	

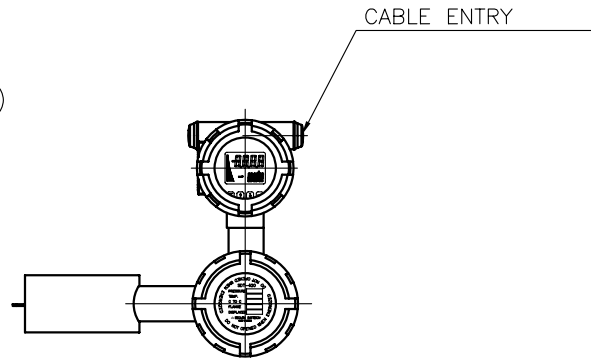
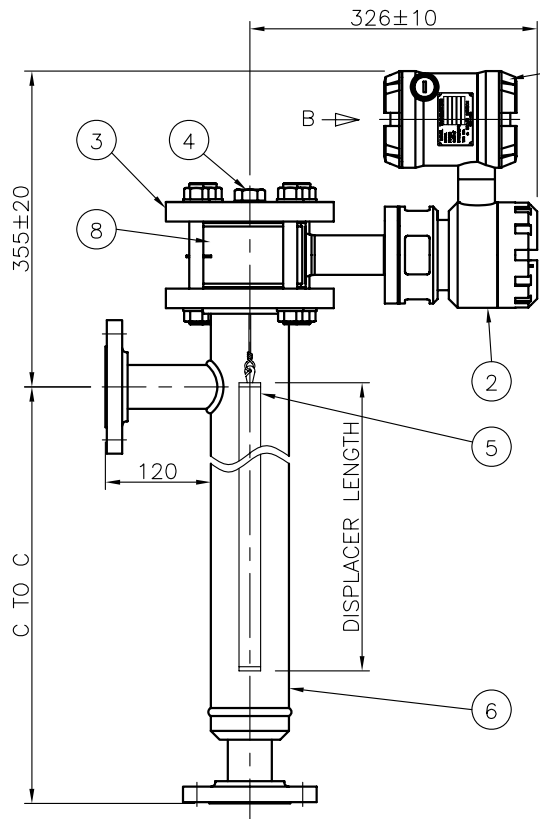
NOTES

1. REFER TO INSTALLATION MANUAL WHEN YOU SET IT UP
2. TYPICAL CABLE 2 OFF TWISTED PAIR MIN. 22AWG STRANDED CORE WITH OVERALL SHIELDING AS REQUIRED
3. CHAMBER ORDERING INFORMATIONSDT-420CH-B-1-B-1-A-1-A-3-A-1

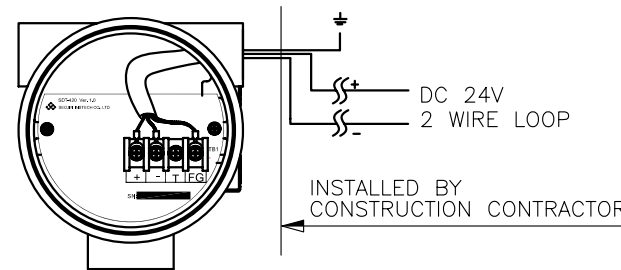
9	CONNECTION FLANGE	A105	2		
8	TORSION BAR GUARD	A105	1		
7	GLOBE VALVE & PLUG	A105	1	NPT 1/2"	
6	CHAMBER	A106B	1	3" Sch40	
5	DISPLACER	316LSS	1		
4	VENT PLUG	A105	1	NPT 3/4"	
3	BLIND FLANGE	A105	1	ANSI 150# 3" RF	
2	ADJUST HOUSING	ADC12	1		
1	DISPLAYER	ADC12	1		
NO	DESCRIPTION	MATERIAL	Q'TY	SPECIFICATION	REMARK

BILL OF MATERIAL

CUSTOMER	-						
PROJECT	-						
TITLE	DISPLACEMENT TYPE LEVEL TRANSMITTER SDT-420-31-A-1-A-1-A-1-A-1-A-1-A ASSEMBLY DRAWING						
MANUFACTURER	 SeoJin Instech Co., Ltd.						
SCALE		ERP CODE	-	Work Order No.	-	REV.	
N/S	DWG NO.						



VIEW "A" (RIGHT)



VIEW "B"

ELECTRICAL CONNECTION DIAGRAM

TOTAL Q'TY : - SETS

NO.	TAG NO.	FLUID(UPPER/LOWER)	OPER. PRESS. MAX.(Barg)	OPER. TEMP. MAX.(°C)	RATING	C TO C	DISPLACER LENGTH	CONNECTION	HEAD ORIENTATION	ACCURACY	Q'TY
1	-	-	-	-	150#	-	-	ANSI 150# 2" RF (SIDE-BOTTOM)	RIGHT	±0.5% F.S	- SETS

△											
△											
△											
△											
△	FOR INFORMATION DWG										
REV.	DESCRIPTION	DATE	DESIGNED	CHECKED	REVIEWED	APPROVED					

DESIGN DATA

CODE	ASME B31.1
UNIT	mm
ENCLOSURE	EXPLOSION PROOF Ex d IIC T6, IP67
TORQUE TUBE MAT'L	316LSS
POWER CONSUMPTION	25mA MAX.
POWER SUPPLY	24V DC
OUTPUT SIGNAL	4~20mA, HART COMM.

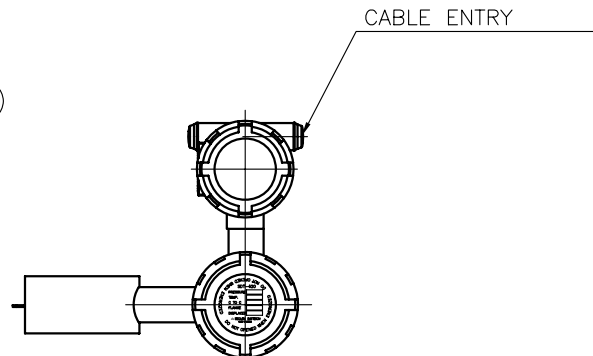
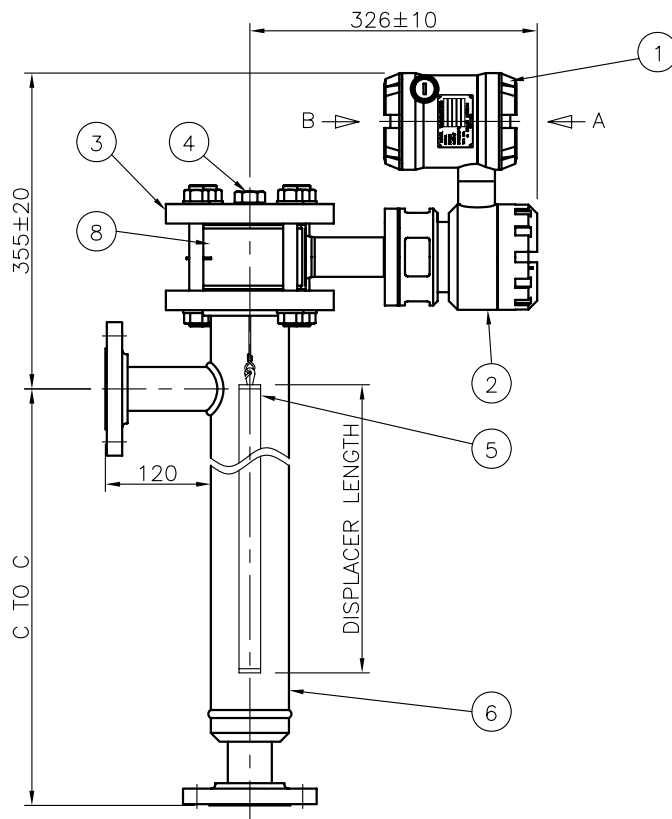
NOTES

- REFER TO INSTALLATION MANUAL WHEN YOU SET IT UP
- TYPICAL CABLE 2 OFF TWISTED PAIR MIN. 22AWG STRANDED CORE WITH OVERALL SHIELDING AS REQUIRED
- CHAMBER ORDERING INFORMATIONSDT-420CH-B-1-B-1-A-1-A-3-A-1

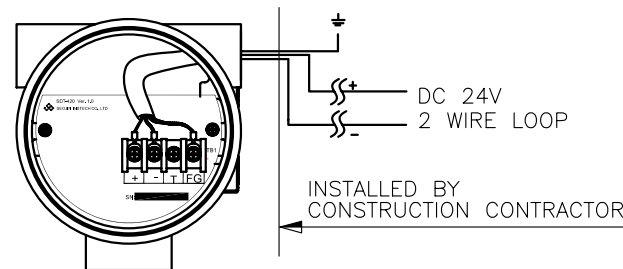
9	CONNECTION FLANGE	A105	2		
8	TORSION BAR GUARD	A105	1		
7	GLOBE VALVE & PLUG	A105	1	NPT 1/2"	
6	CHAMBER	A106B	1	3" Sch40	
5	DISPLACER	316LSS	1		
4	VENT PLUG	A105	1	NPT 3/4"	
3	BLIND FLANGE	A105	1	ANSI 150# 3" RF	
2	ADJUST HOUSING	ADC12	1		
1	DISPLAYER	ADC12	1		
NO	DESCRIPTION	MATERIAL	Q'TY	SPECIFICATION	REMARK

BILL OF MATERIAL

CUSTOMER	-
PROJECT	-
TITLE	DISPLACEMENT TYPE LEVEL TRANSMITTER SDT-420-31-A-1-A-1-A-2-A-1-A ASSEMBLY DRAWING
MANUFACTURER	SeoJin Instech Co.,Ltd.
SCALE	N/S
ERP CODE	-
Work Order No.	-
REV.	△



VIEW "A" (RIGHT)



VIEW "B"

ELECTRICAL CONNECTION DIAGRAM

TOTAL Q'TY : - SETS

NO.	TAG NO.	FLUID(UPPER/LOWER)	OPER. PRESS. MAX.(Barg)	OPER. TEMP. MAX.(°C)	RATING	C TO C	DISPLACER LENGTH	CONNECTION	HEAD ORIENTATION	ACCURACY	Q'TY
1	-	-	-	-	150#	-	-	ANSI 150# 2" RF (SIDE-BOTTOM)	RIGHT	±0.5% F.S	- SETS

△											
△											
△											
△											
△	FOR INFORMATION DWG										
REV.	DESCRIPTION	DATE	DESIGNED	CHECKED	REVIEWED	APPROVED					

DESIGN DATA

CODE	ASME B31.1
UNIT	mm
ENCLOSURE	EXPLOSION PROOF Ex d IIC T6, IP67
TORQUE TUBE MAT'L	316LSS
POWER CONSUMPTION	25mA MAX.
POWER SUPPLY	24V DC
OUTPUT SIGNAL	4~20mA, HART COMM.

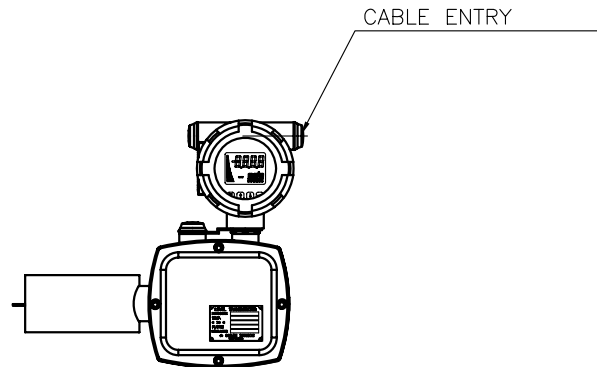
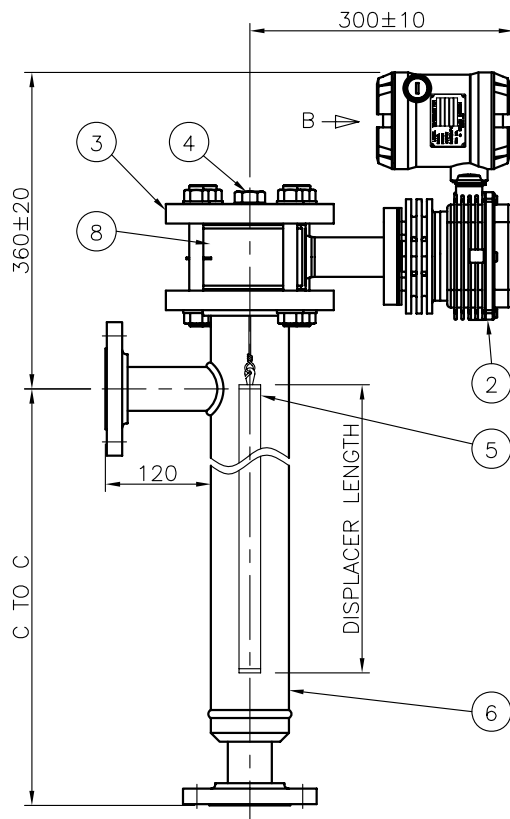
NOTES

1. REFER TO INSTALLATION MANUAL WHEN YOU SET IT UP
2. TYPICAL CABLE 2 OFF TWISTED PAIR MIN. 22AWG STRANDED CORE WITH OVERALL SHIELDING AS REQUIRED
3. CHAMBER ORDERING INFORMATIONSDT-420CH-B-1-B-1-A-1-A-3-A-1

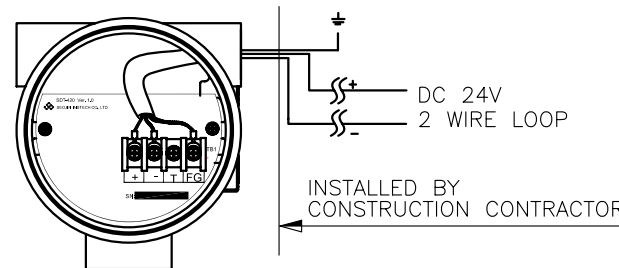
9	CONNECTION FLANGE	A105	2		
8	TORSION BAR GUARD	A105	1		
7	GLOBE VALVE & PLUG	A105	1	NPT 1/2"	
6	CHAMBER	A106B	1	3" Sch40	
5	DISPLACER	316LSS	1		
4	VENT PLUG	A105	1	NPT 3/4"	
3	BLIND FLANGE	A105	1	ANSI 150# 3" RF	
2	ADJUST HOUSING	ADC12	1		
1	DISPLAYER	ADC12	1		
NO	DESCRIPTION	MATERIAL	Q'TY	SPECIFICATION	REMARK

BILL OF MATERIAL

CUSTOMER	-
PROJECT	-
TITLE	DISPLACEMENT TYPE LEVEL TRANSMITTER SDT-420-31-A-1-A-1-A-2-A-1-A ASSEMBLY DRAWING
MANUFACTURER	SeoJin Instech Co.,Ltd.
SCALE	N/S
ERP CODE	-
Work Order No.	-
REV.	△



VIEW "A" (RIGHT)



VIEW "B"

ELECTRICAL CONNECTION DIAGRAM

TOTAL Q'TY : - SETS

NO.	TAG NO.	FLUID(UPPER/LOWER)	OPER. PRESS. MAX.(Barg)	OPER. TEMP. MAX.(°C)	RATING	C TO C	DISPLACER LENGTH	CONNECTION	HEAD ORIENTATION	ACCURACY	Q'TY
1	-	-	-	-	150#	-	-	ANSI 150# 2" RF (SIDE-BOTTOM)	RIGHT	±0.5% F.S	- SETS

△											
△											
△											
△											
△	FOR INFORMATION DWG										
REV.	DESCRIPTION	DATE	DESIGNED	CHECKED	REVIEWED	APPROVED					

DESIGN DATA

CODE	ASME B31.1		
UNIT	mm		
ENCLOSURE		INTRINSIC SAFETY	Ex ia IIC T6,T6 IP65
TORQUE TUBE MAT'L		316LSS	
POWER CONSUMPTION		25mA MAX.	
POWER SUPPLY		24V DC	
OUTPUT SIGNAL		4~20mA, HART COMM.	

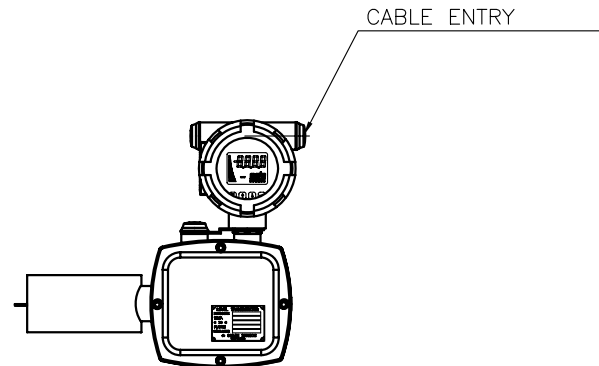
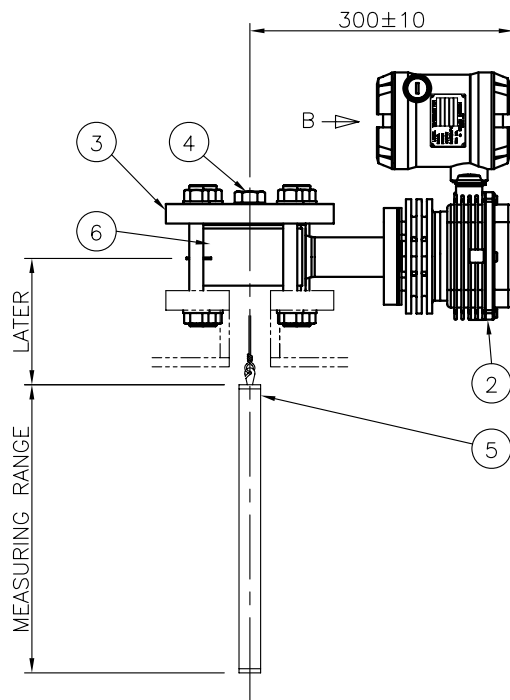
NOTES

- REFER TO INSTALLATION MANUAL WHEN YOU SET IT UP
- TYPICAL CABLE 2 OFF TWISTED PAIR MIN. 22AWG STRANDED CORE WITH OVERALL SHIELDING AS REQUIRED
- CHAMBER ORDERING INFORMATIONSDT-420CH-B-1-B-1-A-1-A-3-A-1

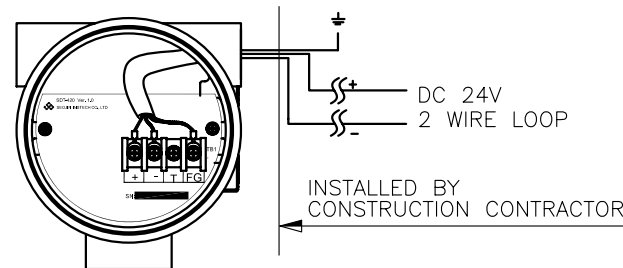
9	CONNECTION FLANGE	A105	2		
8	TORSION BAR GUARD	A105	1		
7	GLOBE VALVE & PLUG	A105	1	NPT 1/2"	
6	CHAMBER	A106B	1	3" Sch40	
5	DISPLACER	316LSS	1		
4	VENT PLUG	A105	1	NPT 3/4"	
3	BLIND FLANGE	A105	1	ANSI 150# 3" RF	
2	ADJUST HOUSING	ADC12	1		
1	DISPLAYER	ADC12	1		
NO	DESCRIPTION	MATERIAL	Q'TY	SPECIFICATION	REMARK

BILL OF MATERIAL

CUSTOMER	-
PROJECT	-
TITLE	DISPLACEMENT TYPE LEVEL TRANSMITTER SDT-420-31-A-1-A-1-A-3-A-1-A ASSEMBLY DRAWING
MANUFACTURER	SeoJin Instech Co., Ltd.
SCALE	N/S
ERP CODE	-
Work Order No.	-
REV.	



VIEW "A" (RIGHT)



VIEW "B"

ELECTRICAL CONNECTION DIAGRAM

TOTAL Q'TY : - SETS

NO.	TAG NO.	FLUID(UPPER/LOWER)	OPER. PRESS. MAX.(Barg)	OPER. TEMP. MAX.(°C)	RATING	MEASURING RANGE	HEAD ORIENTATION	ACCURACY	Q'TY
1	-	-	-	-	150#	-	RIGHT	±0.5% F.S	- SETS

△									
△									
△									
△									
△	FOR INFORMATION DWG								
REV.	DESCRIPTION	DATE	DESIGNED	CHECKED	REVIEWED	APPROVED			

DESIGN DATA

CODE	ASME B31.1		
UNIT	mm		
ENCLOSURE		WEATHER PROOF	IP65
TORQUE TUBE MAT'L		316LSS	
POWER CONSUMPTION		25mA MAX.	
POWER SUPPLY		24V DC	
OUTPUT SIGNAL		4~20mA, HART COMM.	

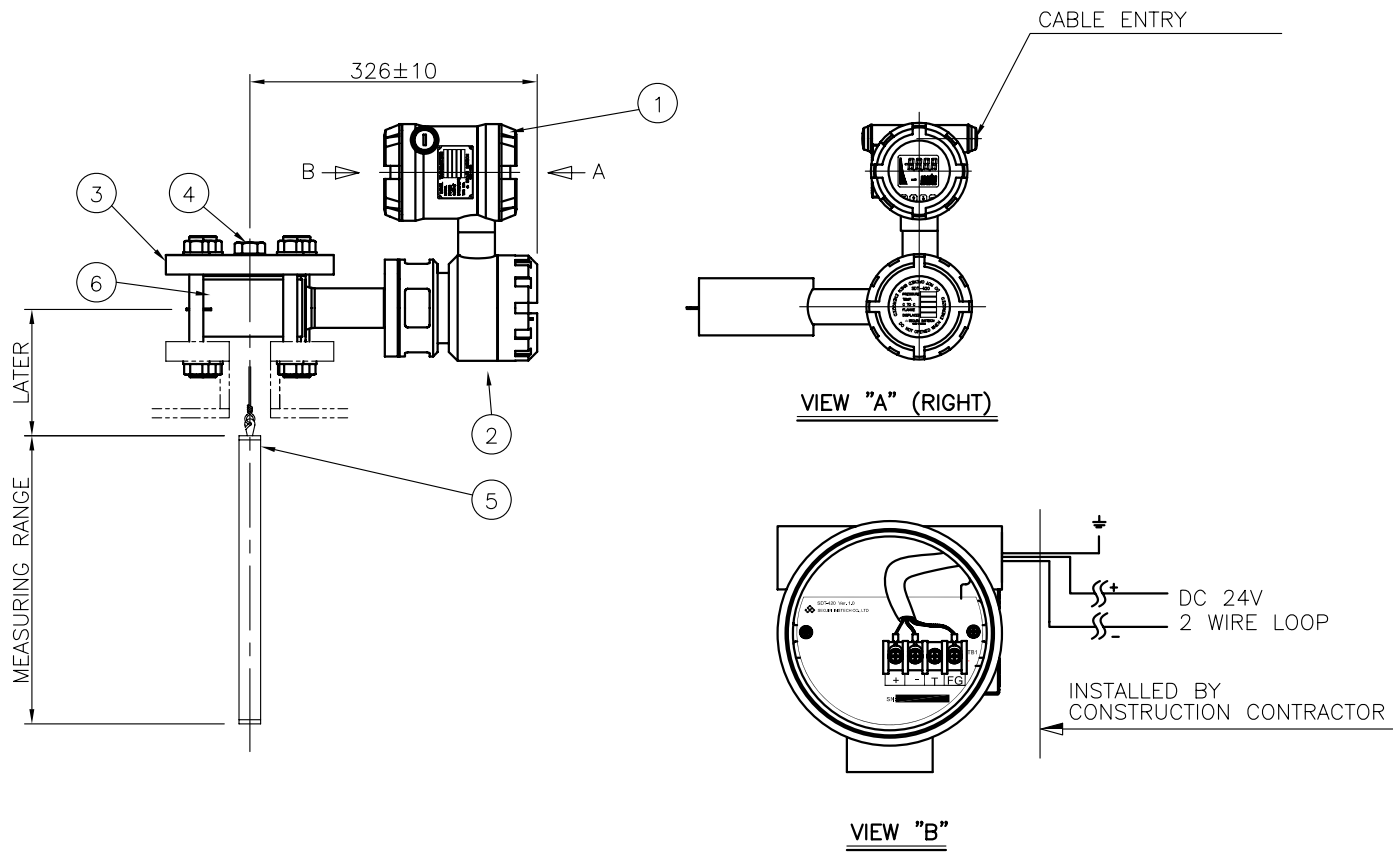
NOTES

1. REFER TO INSTALLATION MANUAL WHEN YOU SET IT UP
2. TYPICAL CABLE 2 OFF TWISTED PAIR MIN. 22AWG STRANDED CORE WITH OVERALL SHIELDING AS REQUIRED

6	TORSION BAR GUARD	A105	1		
5	DISPLACER	316LSS	1		
4	VENT PLUG	A105	1	NPT 3/4"	
3	BLIND FLANGE	A105	1	ANSI 150# 3" RF	
2	ADJUST HOUSING	ADC12	1		
1	DISPLAYER	ADC12	1		
NO	DESCRIPTION	MATERIAL	Q'TY	SPECIFICATION	REMARK

BILL OF MATERIAL

CUSTOMER	-
PROJECT	-
TITLE	DISPLACEMENT TYPE LEVEL TRANSMITTER SDT-420-31-A-1-A-1-A-1-A-1-A-1-A ASSEMBLY DRAWING
MANUFACTURER	SeoJin Instech Co., Ltd.
SCALE	N/S
ERP CODE	-
Work Order No.	-
REV.	



ELECTRICAL CONNECTION DIAGRAM

TOTAL Q'TY : - SETS

NO.	TAG NO.	FLUID(UPPER/LOWER)	OPER. PRESS. MAX.(Barg)	OPER. TEMP. MAX.(°C)	RATING	MEASURING RANGE	HEAD ORIENTATION	ACCURACY	Q'TY
1	-	-	-	-	150#	-	RIGHT	±0.5% F.S	- SETS

△									
△									
△									
△									
△	FOR INFORMATION DWG								
REV.	DESCRIPTION	DATE	DESIGNED	CHECKED	REVIEWED	APPROVED			

DESIGN DATA

CODE	ASME B31.1
UNIT	mm
ENCLOSURE	EXPLOSION PROOF Ex d IIC T6, IP67
TORQUE TUBE MAT'L	316LSS
POWER CONSUMPTION	25mA MAX.
POWER SUPPLY	24V DC
OUTPUT SIGNAL	4~20mA, HART COMM.

NOTES

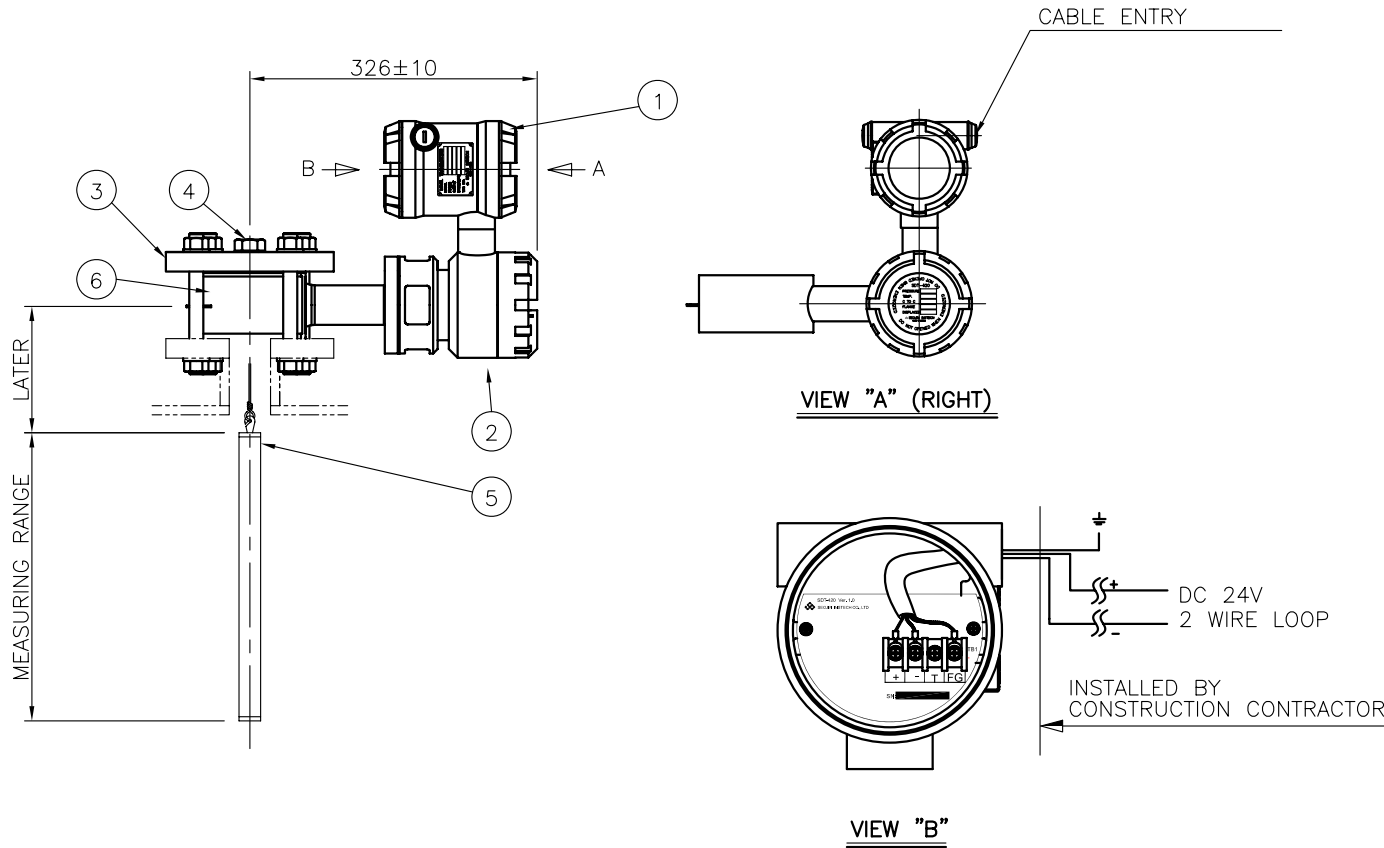
- REFER TO INSTALLATION MANUAL WHEN YOU SET IT UP
- TYPICAL CABLE 2 OFF TWISTED PAIR MIN. 22AWG STRANDED CORE WITH OVERALL SHIELDING AS REQUIRED

6	TORSION BAR GUARD	A105	1		
5	DISPLACER	316LSS	1		
4	VENT PLUG	A105	1	NPT 3/4"	
3	BLIND FLANGE	A105	1	ANSI 150# 3" RF	
2	ADJUST HOUSING	ADC12	1		
1	DISPLAYER	ADC12	1		
NO	DESCRIPTION	MATERIAL	Q'TY	SPECIFICATION	REMARK

BILL OF MATERIAL

CUSTOMER	-		
PROJECT	-		
TITLE	DISPLACEMENT TYPE LEVEL TRANSMITTER SDT-420-31-A-1-A-1-A-2-A-1-A ASSEMBLY DRAWING		
MANUFACTURER	SeoJin Instech Co., Ltd.		

SCALE		ERP CODE	-	Work Order No.	-	REV.	
N/S	DWG NO.						



ELECTRICAL CONNECTION DIAGRAM

TOTAL Q'TY : - SETS

NO.	TAG NO.	FLUID(UPPER/LOWER)	OPER. PRESS. MAX.(Barg)	OPER. TEMP. MAX.(°C)	RATING	MEASURING RANGE	HEAD ORIENTATION	ACCURACY	Q'TY
1	-	-	-	-	150#	-	RIGHT	±0.5% F.S	- SETS

△									
△									
△									
△									
△	FOR INFORMATION DWG								
REV.	DESCRIPTION	DATE	DESIGNED	CHECKED	REVIEWED	APPROVED			

DESIGN DATA

CODE	ASME B31.1
UNIT	mm
ENCLOSURE	EXPLOSION PROOF Ex d IIC T6, IP67
TORQUE TUBE MAT'L	316LSS
POWER CONSUMPTION	25mA MAX.
POWER SUPPLY	24V DC
OUTPUT SIGNAL	4~20mA, HART COMM.

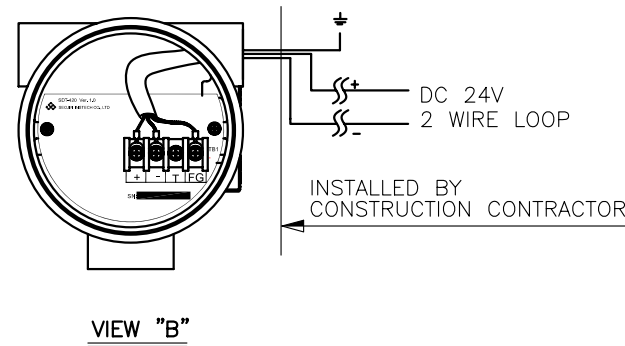
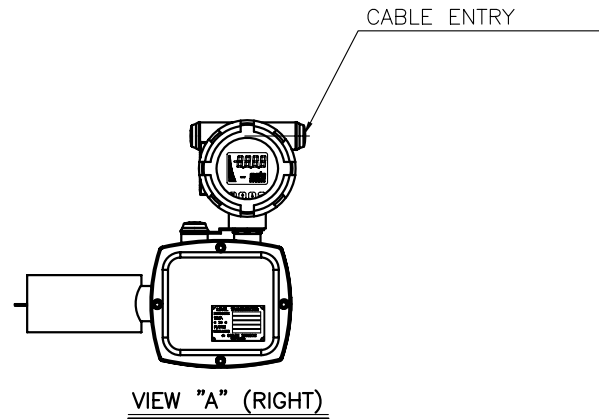
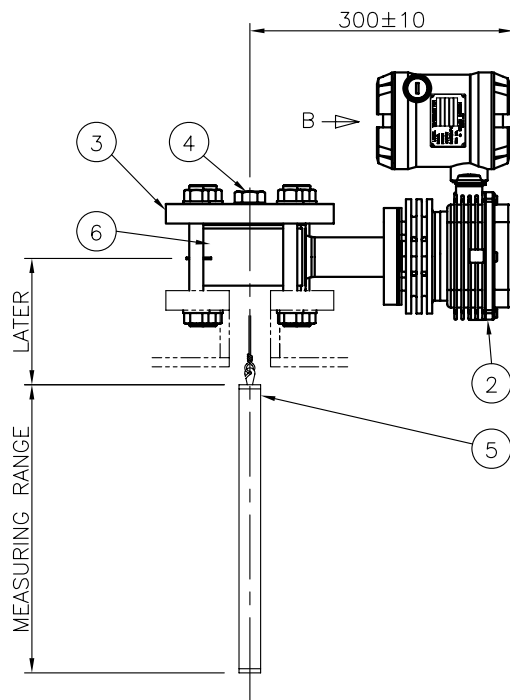
NOTES

- REFER TO INSTALLATION MANUAL WHEN YOU SET IT UP
- TYPICAL CABLE 2 OFF TWISTED PAIR MIN. 22AWG STRANDED CORE WITH OVERALL SHIELDING AS REQUIRED

6	TORSION BAR GUARD	A105	1		
5	DISPLACER	316LSS	1		
4	VENT PLUG	A105	1	NPT 3/4"	
3	BLIND FLANGE	A105	1	ANSI 150# 3" RF	
2	ADJUST HOUSING	ADC12	1		
1	DISPLAYER	ADC12	1		
NO	DESCRIPTION	MATERIAL	Q'TY	SPECIFICATION	REMARK

BILL OF MATERIAL

CUSTOMER	-
PROJECT	-
TITLE	DISPLACEMENT TYPE LEVEL TRANSMITTER SDT-420-31-A-1-A-1-A-2-A-1-A ASSEMBLY DRAWING
MANUFACTURER	SeoJin Instech Co., Ltd.
SCALE	N/S
ERP CODE	-
Work Order No.	-
REV.	



ELECTRICAL CONNECTION DIAGRAM

TOTAL Q'TY : - SETS

NO.	TAG NO.	FLUID(UPPER/LOWER)	OPER. PRESS. MAX.(Barg)	OPER. TEMP. MAX.(°C)	RATING	MEASURING RANGE	HEAD ORIENTATION	ACCURACY	Q'TY
1	-	-	-	-	150#	-	RIGHT	±0.5% F.S	- SETS

△									
△									
△									
△									
△	FOR INFORMATION DWG								
REV.	DESCRIPTION	DATE	DESIGNED	CHECKED	REVIEWED	APPROVED			

DESIGN DATA

CODE	ASME B31.1			A
UNIT	mm			
ENCLOSURE		INTRINSIC SAFETY	Ex ia IIC T6,T6 IP65	
TORQUE TUBE MAT'L		316LSS		
POWER CONSUMPTION		25mA MAX.		
POWER SUPPLY		24V DC		
OUTPUT SIGNAL		4~20mA, HART COMM.		

NOTES

1. REFER TO INSTALLATION MANUAL WHEN YOU SET IT UP
2. TYPICAL CABLE 2 OFF TWISTED PAIR MIN. 22AWG STRANDED CORE WITH OVERALL SHIELDING AS REQUIRED

6	TORSION BAR GUARD	A105	1		
5	DISPLACER	316LSS	1		
4	VENT PLUG	A105	1	NPT 3/4"	
3	BLIND FLANGE	A105	1	ANSI 150# 3" RF	
2	ADJUST HOUSING	ADC12	1		
1	DISPLAYER	ADC12	1		
NO	DESCRIPTION	MATERIAL	Q'TY	SPECIFICATION	REMARK

BILL OF MATERIAL

CUSTOMER	-
PROJECT	-
TITLE	DISPLACEMENT TYPE LEVEL TRANSMITTER SDT-420-31-A-1-A-1-A-3-A-1-A ASSEMBLY DRAWING
MANUFACTURER	SeoJin Instech Co., Ltd.
SCALE	N/S
ERP CODE	-
Work Order No.	-
REV.	△
DWG NO.	SJ-M017-DWG-AP104