

R32G Series

User's Guide



Thank you for purchasing product of SAMWON ACT.
Please check model of product that you purchase first, and read this manual prior to use it.

• Caution for Safety

- Caution** Case that results in serious damage in human body or equipment, and fire if user handles this equipment wrongly
- Warning** Case that results in slight damage in human body or equipment, and fire if user handles this equipment wrongly

Caution

- Do Not use other voltage except appointed voltage.
It may be the cause of fire or damage of equipment.
- Use it within nominal voltage and current which are marked on load.
It may be the cause of fire or damage of equipment.
- Check COMMON polarity of using controller (PLC, etc) first, and then select proper product.
It may be the cause of fire or damage of this equipment and user's.
 - COMMON Polarity of controller is '+' (NPN TYPE): R32G-NT
 - COMMON Polarity of controller is '-' (PNP TYPE): R32G-PT
- Make controller and connection cable between relay boards after checking internal wiring of relay board and PIN (terminal or socket) array of controller if you want to make it for yourself.
It may be the cause of fire, and malfunction or damage of this equipment and user's.

※ The connection cable for PLC of various makers is provided by us. Please refer to the catalogue or contact Head or branch office if you need more detail models and specifications.

Warning

- Plug or unplug power line and/or connector for signal after making sure to shut off power so as that it is prevented to be damaged or malfunctioned.
- Read this user's guide which is attached to product, and check product's performance, specification, operation pattern, signal, and how to handle prior to use. Keep user's guide please.
- When wiring the terminal block, please tighten it with the specified torque using the appropriate tool. If it is outside of this range torque, it may cause malfunction due to breakage or looseness of tightening surface terminal.
- Use removal key which is supplemented for replacement.
Using other tools may be the cause of damage of relay or relay socket.

• Odering information

Model	Relay	IO Point	Coil voltage	Common		Interface		Dimension (W * Dmm)	Mounting method
				Coil	Contact	Coil	Contact		
R32G-NT	OMRON G6B-1174P-	32Point (1a*32)	24V DC	NPN	8 Point Com.	MIL-C-83503 40Pin	Screw Terminal 7.62mm Pitch 40Pole	189.0*88.0	DIN Rail (Channel)
R32G-PT	FD-US DC24V			PNP					

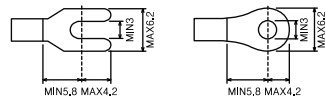
• Comparison of specification of relay

Item			G6B-1174P-FD-US DC24V
Contact	Arrangement		SPST-NO (1a)
	Nominal switching capacity	Resistive load	5A 250V AC/5A 30V DC
		Inductive load	2A 250V AC/2A 30V DC
	Max. switching current		5A
	Max. switching voltage		380V AC/125V DC
Coil	Nominal voltage		24V DC
	Pick-up voltage		70% max. of rated voltage
	Drop-out voltage		10% min. of rated voltage
	Coil resistance		2,880 Ω
	Nominal operation power		Approx. 200mW
Surge voltage between contact and coil			6,000V
Initial breakdown voltage between contact and coil			AC 3,000V 50/60Hz 1min
Country of origin			JAPAN

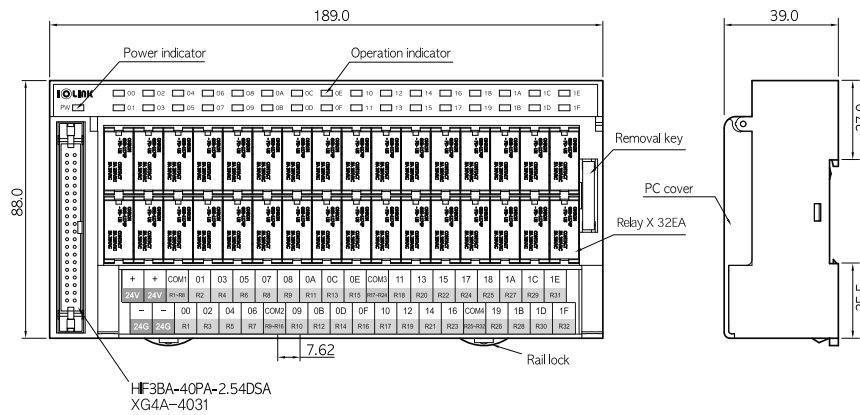
• Material/Specification

Case	Modified PPO
Protective cover	Polycarbonate
PCB	Epoxy 1.6t / 2oz
Elec. wire	AWG22~16 (MAX / 1.5mm ²)
Terminal Screw	M3 X 8L
Screw Torque	7~8kgf • cm (0.68~0.78 N • m)
Ambient temperature	-10℃ ~ +50℃ (No condensation)

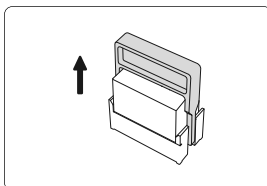
• Applicable Crimp Terminal



• Dimension



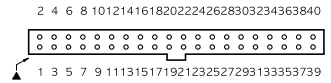
• How to replace relay (Removal Key is embeded in product)



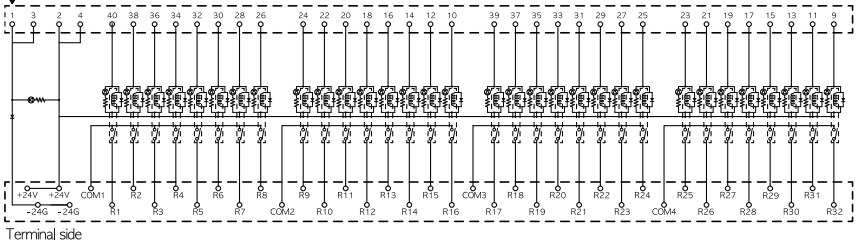
- Make sure to use removal key as shown in right figure when removing relay.
- Do Not make sure to use removal key when installing relay, and insert it into socket indirectly.

• Wiring Diagram

- R32G-NT (NPN)

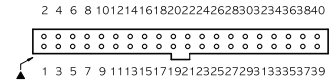


Connector side

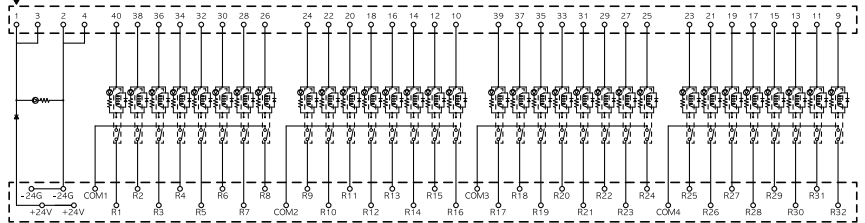


Terminal side

- R32G-PT (PNP)



Connector side



Terminal side

- ※ The above specifications are subject to change without notice.
- ※ Please contact HQ or branch office where you purchased product for A/S of this product or technique.

Major products

- Relay terminal 1, 2, 4, 6, 8, 16, 32point
- Interface terminal 20, 24, 26, 34, 40, 50, 57, 40 x 2pole
- PLC I/O Connecting cables MITSUBISHI, LSIS, CIMON, OMRON, FUJI, YOKOGAWA, HITACHI, SIEMENS, AB, etc.
- Servo Connecting cables Encoder cable, Power cable, Motion cable / MITSUBISHI, YASKAWA, OMRON, PANASONIC, LSIS, SAMSUNG, etc.
- Wiring harness / Special cable assembly