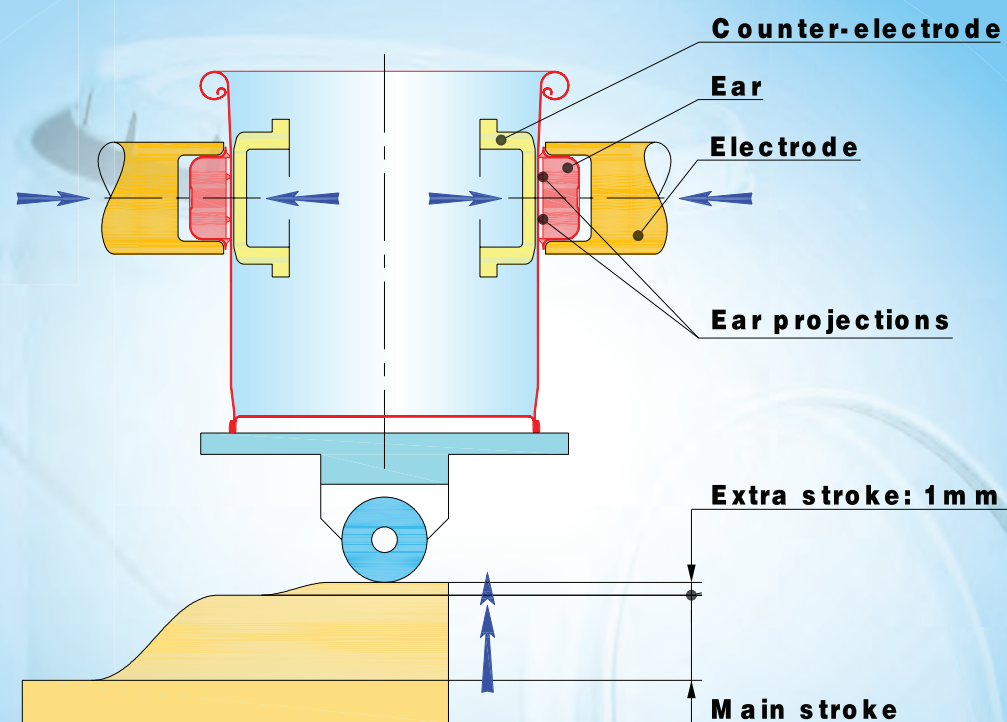


3

BAIL PLACING

Control of the bail placing in order to prevent damage on the canbody during the drop tests.

Sabatier recently improved the coating penetration in order to ensure a good quality ear welding.



Patent pending N° 08/54364

Sabatier
SOUDRONIC GROUP

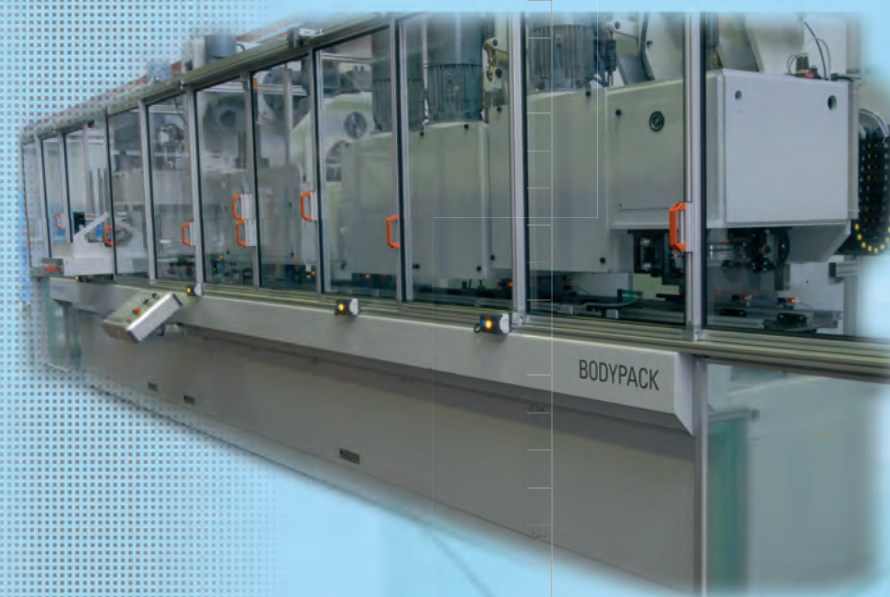
31, avenue de Rome - F 13127 VITROLLES
Tel. +33 (0)4 42 46 94 00 - Fax +33 (0)4 42 46 94 46
email: info@sabatier.fr
www.sabatier.fr

Design Aves - © SABATIER SAS - 02/2009



BODYPACK®

FOR UN-APPROVED PAILS



3 CRITICAL POINTS HAVE TO BE MASTERED
TO GET UN-APPROVAL

2

The top part
of the pail

1

The bottom
seaming

3

The ear and
bail placing



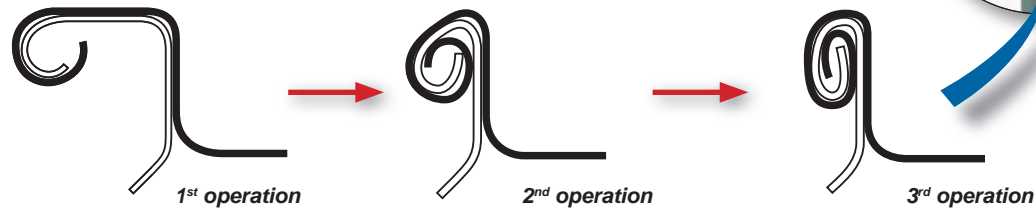
Sabatier
SOUDRONIC GROUP

3 CRITICAL POINTS HAVE TO BE MASTERED TO GET UN-APPROVAL



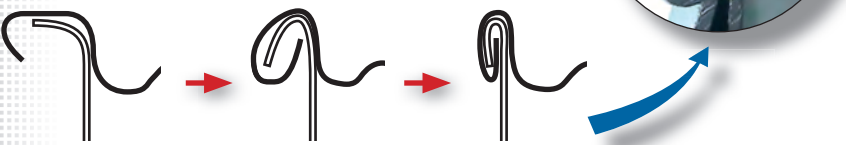
1 THE BOTTOM SEAMING

HIGHLY RESISTANT TRIPLE SEAM



BASIC DOUBLE SEAM

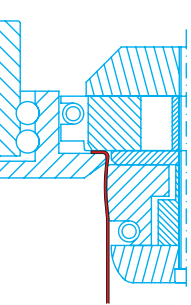
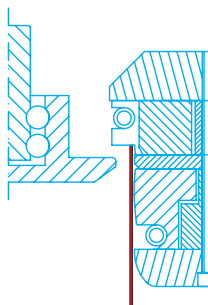
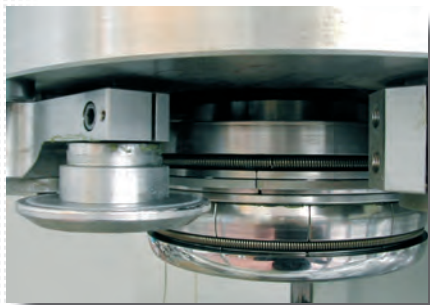
Requires heavier material to resist the drop tests.



PATENTED NEW BODYPACK[®]

Its experience and the recent development of its Bodypack range enabled Sabatier to improve the triple seam quality:

- Better control of the flange width
- Penetration speed of the rollers to process thinner material.



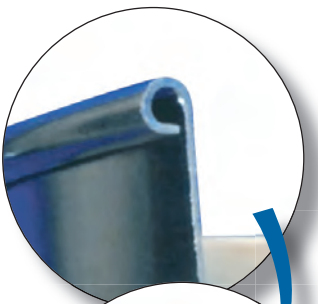
2 LID CLOSING

The top part of the pail should be rigid enough to ensure a tight closing of the lid.

2 CLOSING SYSTEMS



TRIPLE CURL ON THE BODYPACK LINE

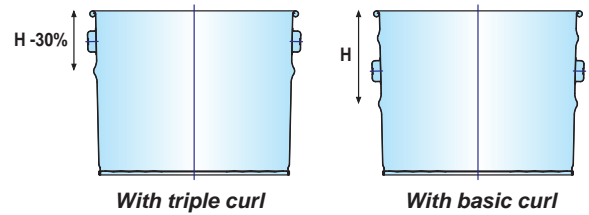


■ Top part produced on 3 stations for a fine adjustment.



STACKING BEAD

The triple curl can allow to spare the top bead



The reduction of the stack height allows up to 50% saving on transport costs

Comparison with a basic curl:

