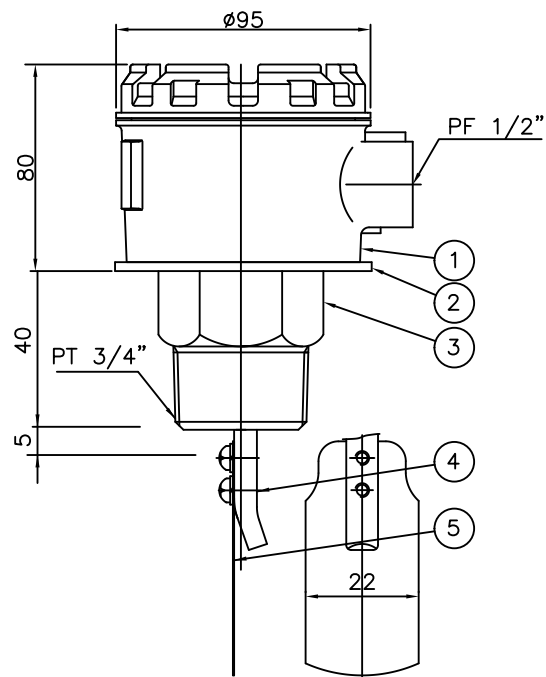
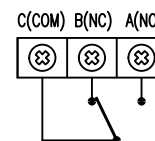


Z004N-DWG-0001-1S

DESIGN DATA

CODE	N/A
UNIT	mm
KIND OF FLUID	—
LIFE TIME OF BELLOWS	100,000 TIMES
LIFE TIME OF CONTACT	500,000 TIMES
INSULATION RESISTANCE	OVER 100Ω AC250V
MAX. PRESSURE	10Kg/Cm ² (1000KPa)
TEMPERATURE	Max 80°C
MOISTURE	Max 80% RH
OUTPUT CONTACT CAPACITY	AC 120V 5A / AC 240V 5A

INTERNAL CIRCUIT



NOTES

REVISION

5	PADDLE	304SS	1		
4	SHAFT	MBsBE2	1		
3	SOCKET	MBsBE2	1		
2	TERMINAL BOX BASE	SS41	1		
1	TERMINAL BOX COVER	ADC	1		
NO	DESCRIPTION	MATERIAL	Q'TY	SPECIFICATION	REMARK

BILL OF MATERIAL

CUSTOMER	—
PROJECT	—
TITLE	PADDLE TYPE FLOW SWITCH SF-4-A-1-A APPROVAL DRAWING
MANUFACTURER	SeoJin Instech Co., Ltd.

SCALE	N/S	ERP CODE	0000	Work Order No.	—	REV.	
DWG NO.	SJ-M006-DWG-AP002						

△					
△					
△					
△					
△	FOR APPROVAL				
REV.	DESCRIPTION	DATE	DESIGNED	REVIEWED	APPROVED