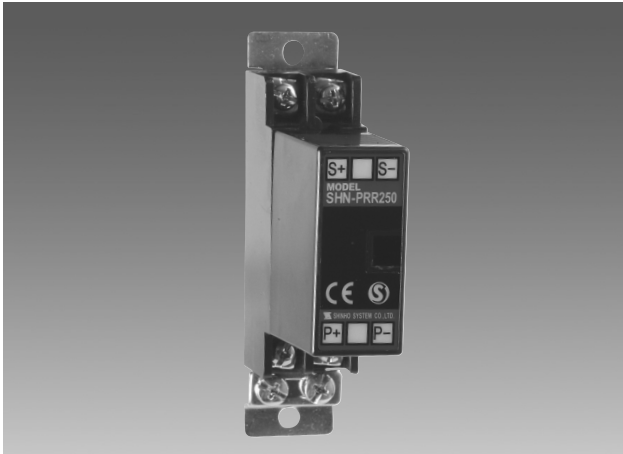


# ARRESTER(for AC power)

SHN-PRR125/250



Power Arrester SHN-PRR is designed for AC power supplies lines.  
This unit is especially beneficial for protecting a instrument from counter electromotive force by inductors and of course normal lightning surge entering through power supply lines.

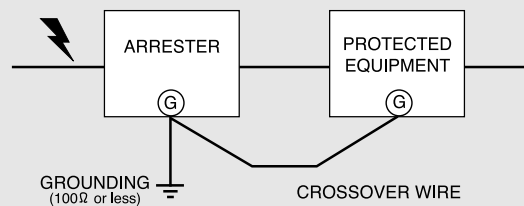
- Applied Technique : Base on ANSI / IEEE Category "A" / "C"

## GENERAL SPECIFICATIONS

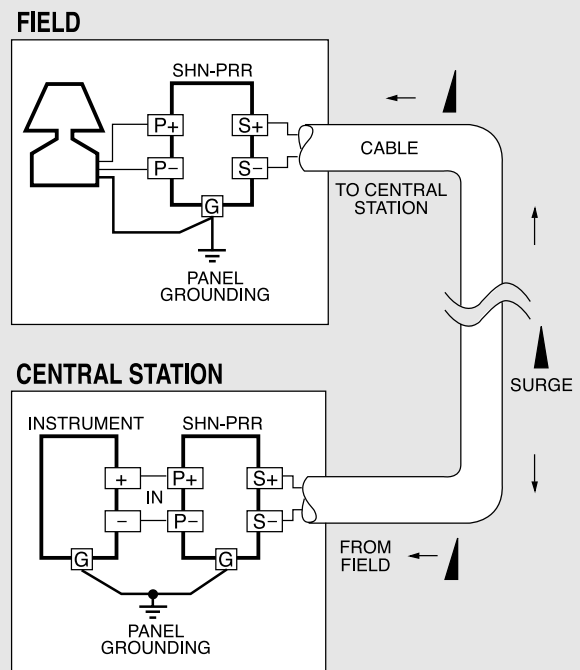
MODEL		SHN-PRR 125	SHN-PRR 250
Input		AC & DC Power	
Discharge	btwn lines	300V or more(peak)	500V or more(peak)
Voltage	btwn lines & GND	500V or more(peak)	700V or more(peak)
Max.Surge	btwn lines	345V or less	600V or less
Voltage	btwn lines	600 or less	840V or less
Response Time		2 nsec or less	
Discharge Current		3KA (8×20) $\mu$ s	
Max. Load Curren		5A	
Internal Series Resistance		Approx. 0.4 $\Omega$ (including return)	
Leakage btwn lines		0.1mA or less(at 150V DC)	0.1mA or less(at 300V DC)
Current btwn lines & GND		0.1mA or less(at 300V DC)	
Max. Line DC Voltage		170V DC	350V DC
Max. Line AC Voltage		120V AC	250V AC
Operating Temperature		-5°C~+60°C	
Operating Humidity		90% RH Max.	
Dimensions		W23.5×H102×D62(mm)	
Weight		140g	
Mounting		Wall Mounting Type	

## GROUNDING

A crossover wire between ARRESTER ground and ground or metallic housing of equipment is required for protection.



## CONNECTION DIAGRAM



## BLOCK DIAGRAM

