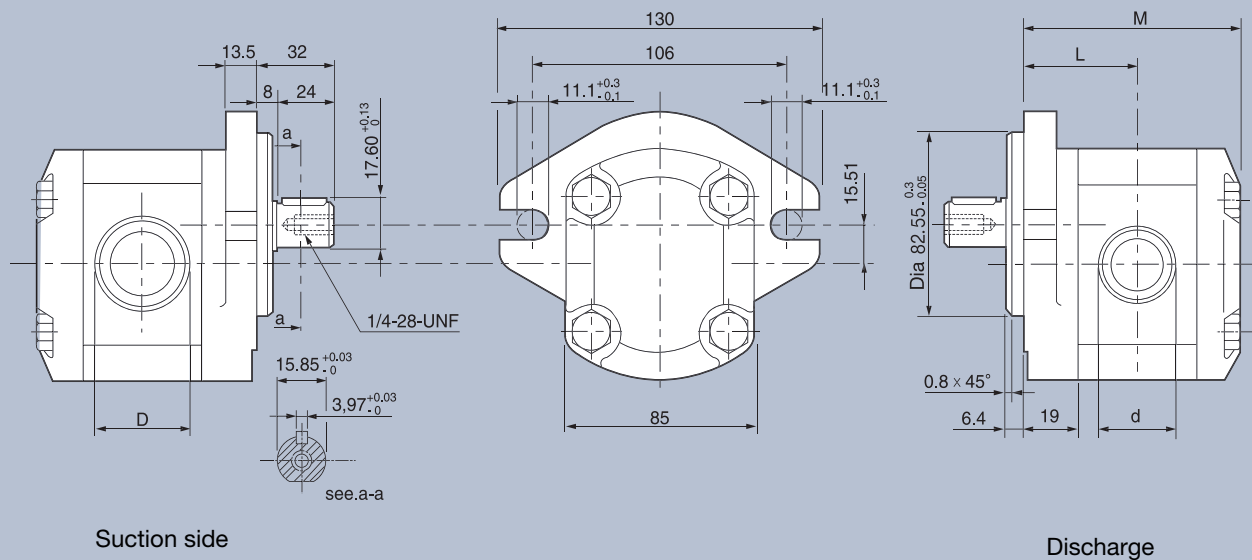


Single Gear Pump

SWG2

Key type of equilibrium



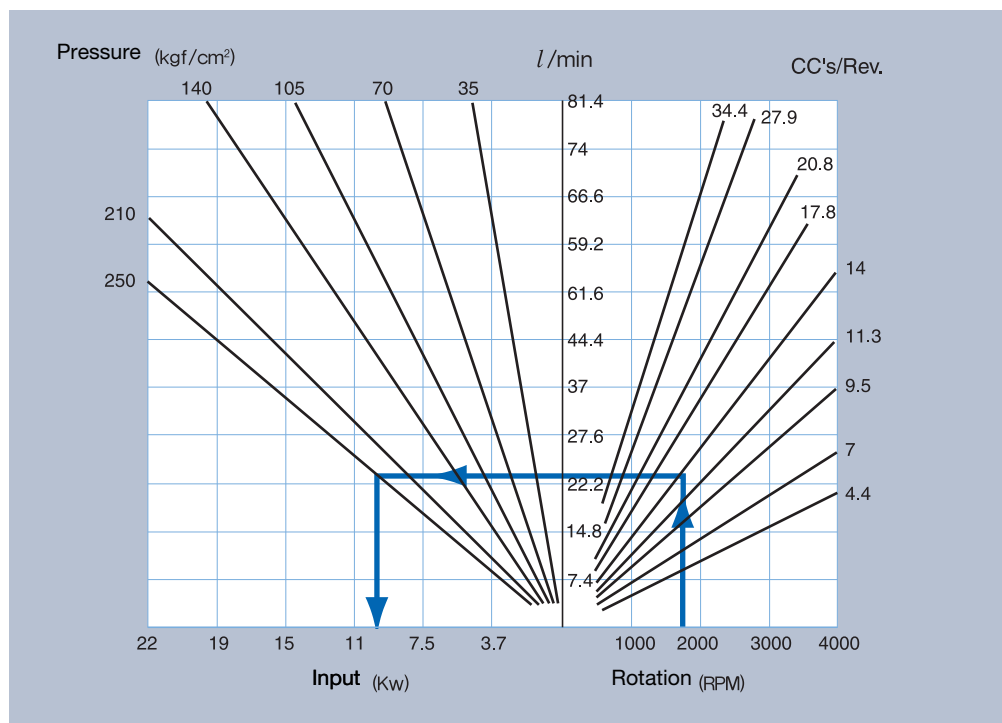
Direction of rotation		Volume cm ³ /r.	Discharge (l /min) 1500r.p.m.	Rated pressure (bar) 1500r.p.m.	Max. Press. (bar) 1500r.p.m.	Max. rotation r.p.m.	Specifications			
R	L						L	M	d	D
SWG2-4.4-R	SWG2-4.4-L	4.4	6.6	250	270	4000	47.5	95	Rc1/2	Rc1/2
SWG2-7-R	SWG2-7-L	7.0	10.4	250	270	4000	47.5	99	Rc1/2	Rc1/2
SWG2-9.5-R	SWG2-9.5-L	9.5	14.2	250	270	4000	49.5	103	Rc1/2	Rc1/2
SWG2-11.3-R	SWG2-11.3-L	11.3	16.9	250	270	4000	51	106	Rc1/2	Rc1/2
SWG2-14-R	SWG2-14-L	14.0	21.1	250	270	4000	53	110	Rc1/2	Rc3/4
SWG2-17.8-R	SWG2-17.8-L	17.8	26.7	230	260	3300	56	116	Rc1/2	Rc3/4
SWG2-20.8-R	SWG2-20.8-L	20.8	31.2	210	230	2800	58.5	121	Rc1/2	Rc3/4
SWG2-27.9-R	SWG2-27.9-L	27.9	41.8	180	200	2100	64	132	Rc1/2	Rc3/4
SWG2-34.4-R	SWG2-34.4-L	34.4	51.7	140	160	2000	69.5	143	Rc1/2	Rc3/4

Single Gear Pump

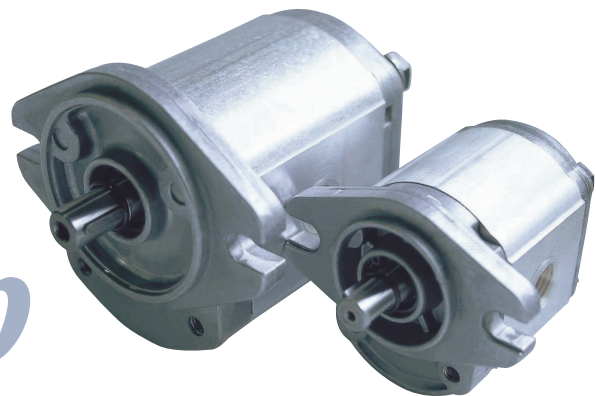
Pump Selection

1. RPM and the pump volume and the point of intersection of the discharge (l / min) to confirm.
2. Use and discharge pressure and the point of intersection of the axis input (Kw) sought.

Example) 14.0 cc volume pump at about 1,750 rpm rotation 24.5 l / min and a discharge, 24.5 MPa {250kgf/cm²} of the 11Kw electric motor is required.



Single Pump



Single Gear Pump

SWG Series Gear Pump How to replace the left and right turn

SINGLE PUMPS

The direction of rotation of the pump shaft is determined by seeing the side, the front side is shown in Flange.

In order to change the direction of rotation of the pump in the direction you want the front Flange is required, follow the instructions below in order to enforce.

- 1) Divide the front Flange (1) and rear Cover (4) from pump.
- 2) Divide the Bushing (2) from the front Flange.
- 3) Drive shaft (3) rotates 180 degrees.
- 4) Bushing (2) mounted to the previous position.
- 5) Flange for the direction you want the front of the rear of the old location Assembles Cover.
- 6) Locate rear Cover (4) rotate 180 degrees on the location of the previous Assembly Front Flange.

