

KMS-2000 Series

Coriolis Mass Flow meter with
Supreme Precision Technology

■ FEATURE

- CE - LVD(2014/35/EC), EMC(2014/30/EU), RoHS(2011/65/EU)
- Design with two curved tubes
- With temperature measurement integrated (with a temperature sensor built in)
- Highly accurate measurement of mass, density and volume
- Applicable to most of gases, liquids and slurry fluids
- Superb stability, accuracy and reproducibility with low flow rate
- Wide range of measurement (500: 1)
- High measurement reliability of liquid $\pm 0.1\%$ (R.D), gas $\pm 0.5\%$ (R.D)
- Customized piping installation length
- Explosion Proof Certification : Ex d IIC T5 / IP67

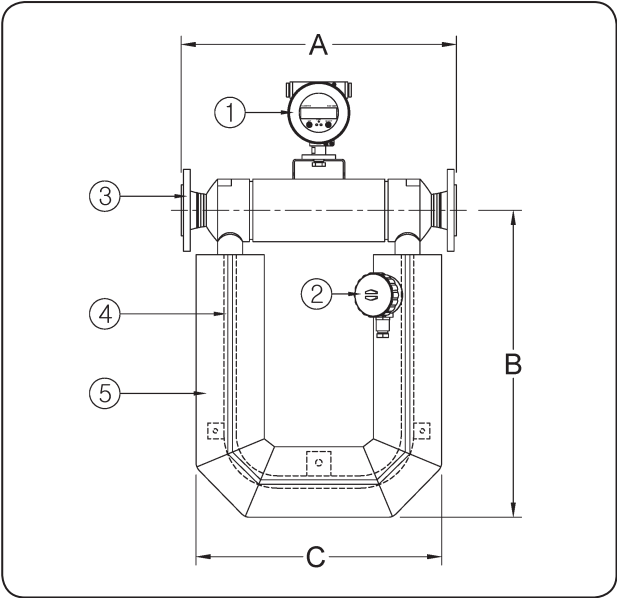
■ APPLICATIONS

- ▶ General industry
 - Cryogenic or high temperature measurement
- ▶ Chemical and Other process industries
 - Concentration and density measurement
 - Batching and mixing in the reactor
- ▶ Food and Beverage industry
 - Quantitative measurement, input, charge
 - Mass flow rate measurement of ice cream and milk (eg inflow of raw milk)
 - Measurement of flow rate, density and specific gravity of brewing process
- ▶ Pharmaceutical industry
 - Quantity distribution, charging, charging
 - Solvent extraction
- ▶ Paper industry
 - Additives, bleaching agents, coloring agents

■ KMS-2000 80A General Specifications

Model Code	KMS-2000 80A
Tube Inner Diameter	80 mm
Process Connection	Flange type - Standard JIS10K RF (Option. ANSI 150#, DIN 16 bar)
Measuring Range	2500 kg/min
Measured Flow	Liquid, Gas, Slurry
Liquid Accuracy	±0.15 % Reading Scale (Rangeability 1:10)
	±0.3 % Reading Scale (Rangeability 1:20)
Gas Accuracy	±0.5 % Reading Scale
Density Accuracy	±0.002 g/cm ³
Fluid Temperature	-200 °C ~ 200 °C
Temperature Accuracy	±1.0 °C ±0.5 % Reading Scale
Max. Pressure	25 MPa
Loss of Pressure	≤ 0.2 MPa
Zero Stability	7.05 kg/h
Repeatability	0.05 %
Power Supply	AC 85-250 V (50~60) Hz DC 24 V – (Option)
Power Consumption	15 VA
Display	OLED Display Flowrate : Mass / Volume Flowrate, Flow Total, Density, Temperature
Output	Analog : DC 4-20 mA / Pulse
	Digital : RS-485 Modbus RTU
Explosion Proof Grade	Ex d IIC T5
Ingress Protection Grade	IP 67

STRUCTURAL DRAWING



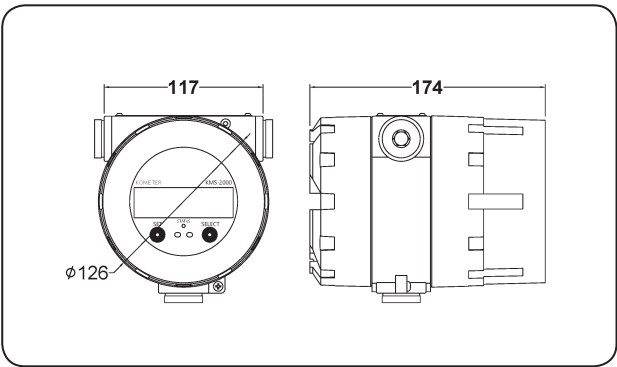
STANDARD MATERIAL

No.	Description	Material	
		Normal	Option
1	Indicator	CAST ALUMINUM	
2	Junction Box	CAST ALUMINUM	
3	Flange	SUS304	316SS / 316LSS
4	Tube	316SS	
5	Housing	SUS304	

FLOW RANGES & DIMENSIONS

Shape	Size		Flow Range (kg/h)		Dimensions (mm)		
			Min.	Max.	A	B	C
Triangle Type	6A	1/4B	10	1200	200	205	240
	15A	1/2B	15	3000	240	265	295
	25A	1B	24	12000	210	450	460
	40A	1-1/2B	60	30000	261	560	570
U-Type	50A	2B	120	60000	556	620	495
	80A	3B	300	150000	830	970	501
	100A	4B	480	240000	997	1032	832

DRAWING (Transmitter)



TRANSMITTER SPECIFICATION

Temp. rating	-30 °C ~ 60 °C
RH	≤95%, non condensed
At Pressure	(86 ~ 106) kPa
Power	AC 110~220V / DC 12~24V
Communication port	RS485 Modbus RTU