

Instrument valve

Model : A080

Spec. sheet no. AD00-08

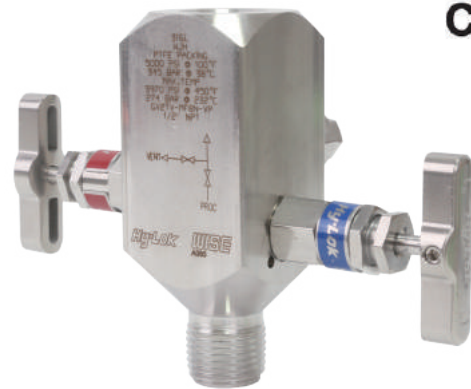
Service intended

It is used for switching flow between one common connection and the other two connections.
It can be used with pressure gauge and pressure transmitter.

Standard features

Max. static pressure up to 41 MPa
Max. working temperature : 232 °C
Packing : PTFE (-54 ~ 232 °C)
Graphite : -54 ~ 648 °C

※ This product's Max. working temperature could be varied depending on its working pressure and temperature.



CRN

Main order

1. Base model

A080 Instrument valve

2. Valve type

- S** Isolation valve
- V** 2-way manifold valve mount type
- W** 2 way manifold valve

3. Gauge connection type

- W** NPT (F)
- M** NPT (M)
- Z** Other

4. Gauge connection size

- 2** 1/4"
- 4** 1/2"
- 5** 3/4"
- 9** Other

5. Process connection type

- W** NPT (F)
- M** NPT (M)
- Z** Other

6. Process connection size

- 2** 1/4"
- 4** 1/2"
- 5** 3/4"
- 9** Other

Sample ordering code

1	2	3	4	5	6	7	8	9	10	11	12
A080	S	W	2	W	2	T	A	1	B	X	1

Ordering information

7. Packing material

- T** PTFE
- G** Graphite
- Z** Other

8. Bleed and plug

- A** None
- B** Bleed
- C** Bleed with plug
- 9** Other

9. Bleed and plug size

- 1** 1/4" NPT (F)
- 2** 1/2" NPT (F)
- 3** No bleed
- Z** Other

10. Material

- | | |
|----------------------|------------------|
| B Hastelloy-C | J Monel |
| H 316SS | Z Inconel |
| L 316L SS | T Other |

11. Unused character

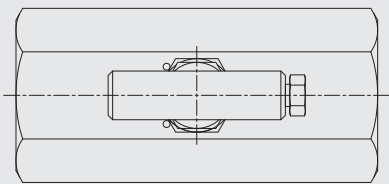
- X** All T bar

12. Unused character

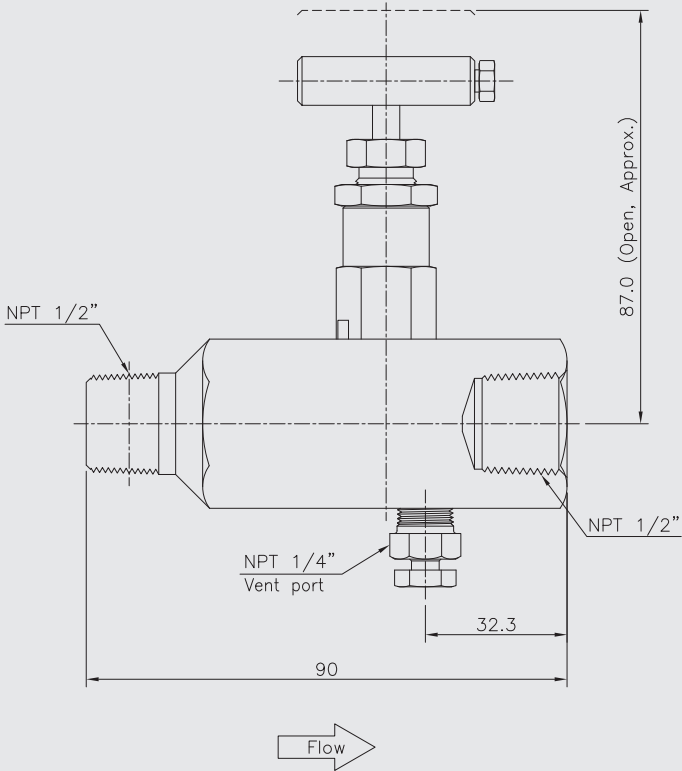
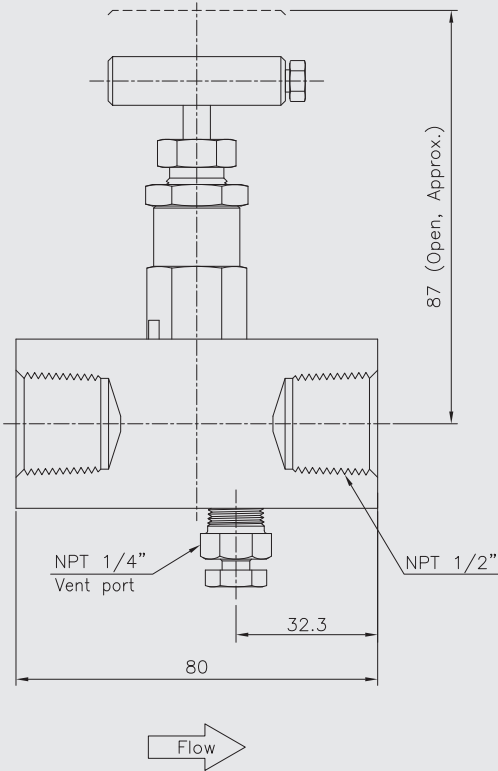
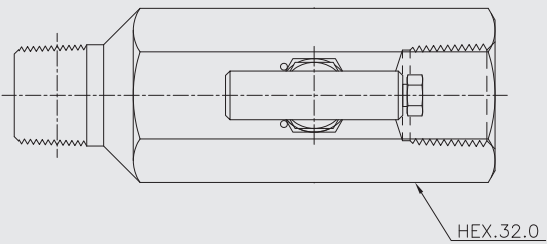
- 1** None

A080 : Type of mounting (1/2)

Code S

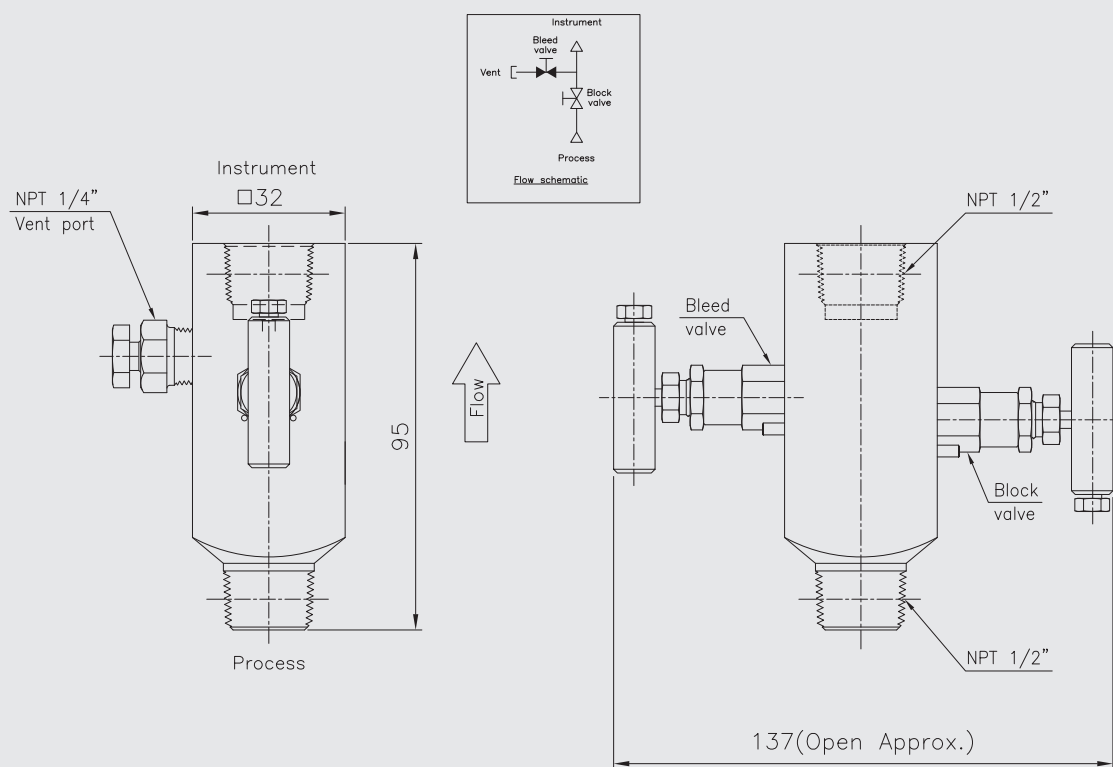


Code S



A080 : Type of mounting (2/2)

Code W



Code V

