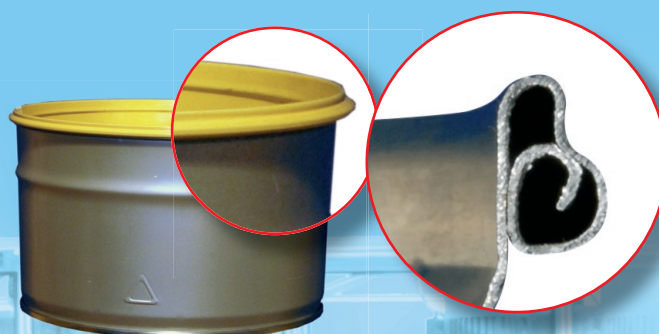


## STATE OF THE ART LINES FOR PAILS WITH LATERAL OPENING

■ HOW TO PRODUCE PAILS WITH LATERAL OPENING  
FROM THE CANBODY MATERIAL?



*Old master profile*



*New master profile*

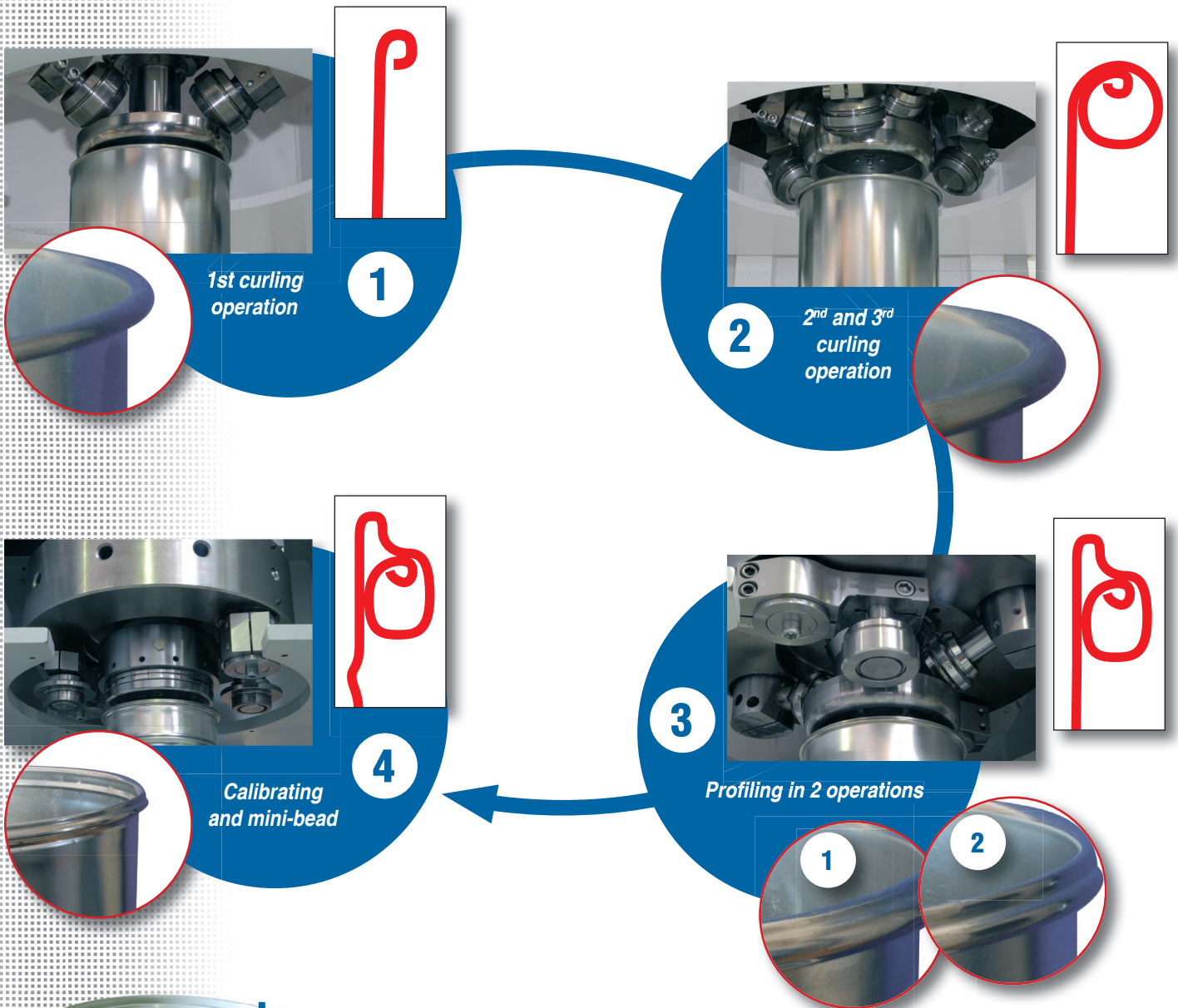
■ CONTINUOUS TECHNICAL INNOVATIONS THROUGH THE PAST YEARS  
ENABLE SABATIER TO OFFER A PROVEN TECHNOLOGY FOR THE  
PRODUCTION OF 2 TO 5 LITRES PAILS WITH A ROTATIONAL SYMMETRY  
PROFILE.



### ■ ADVANTAGES:

- A more resistant profile
- Improved control of the outer dimensions of the profile
- The diameter of the opening is adjustable while producing.

■ 4 OPERATIONS ARE REQUIRED TO MASTER THE FUNCTIONAL DIMENSIONS OF THE PRODUCT.



Mini-bead and calibration station allows the operator to adjust accurately the plug diameter while the machine is running.

By this way, the opening force of the lid can be mastered.

