

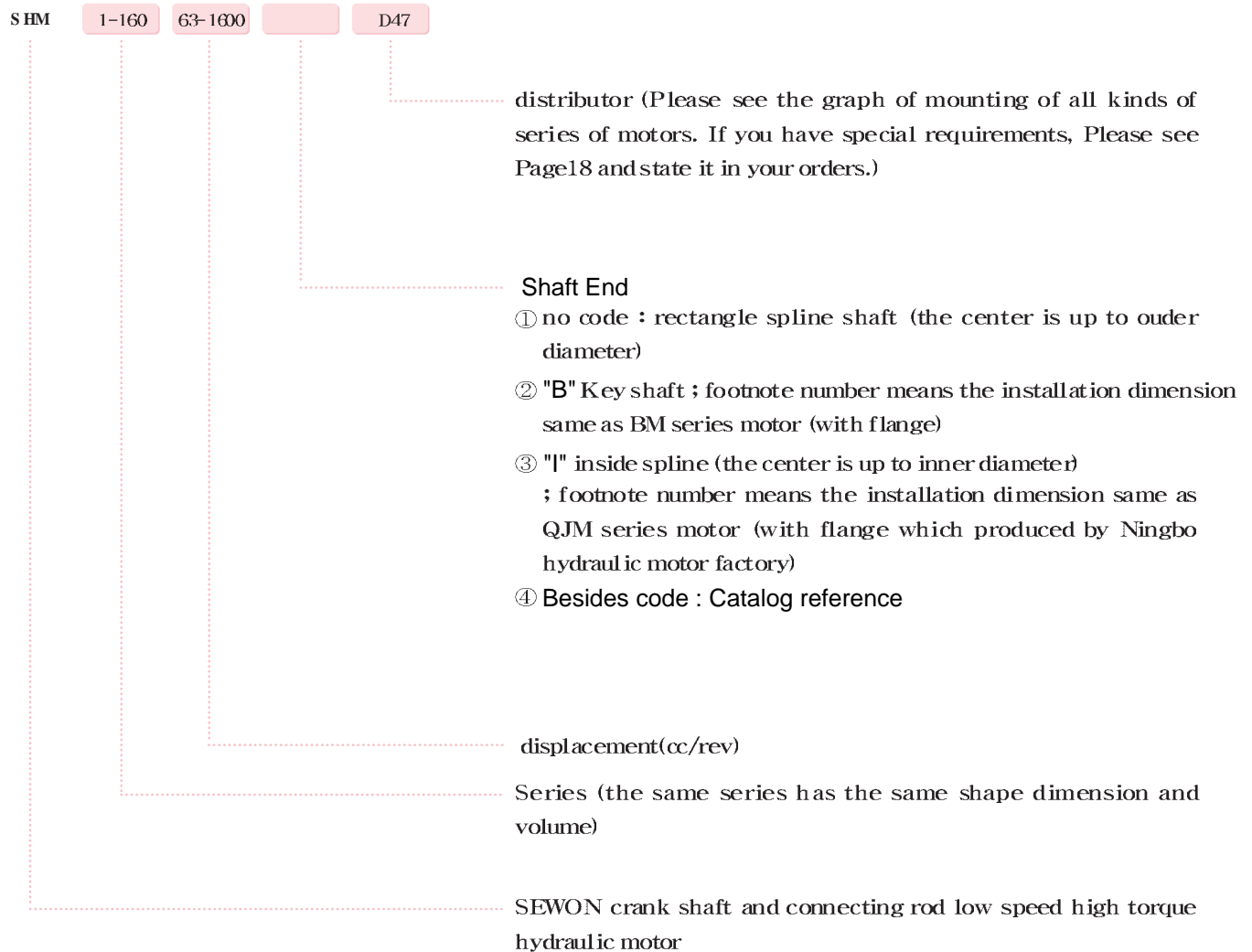


HYDRAULIC MOTORS

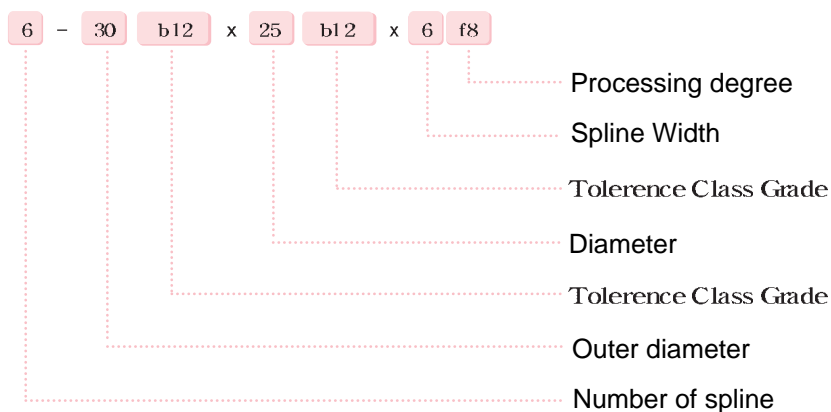


SEWON Hydraulics

Model Number Information



Standard external spline specification



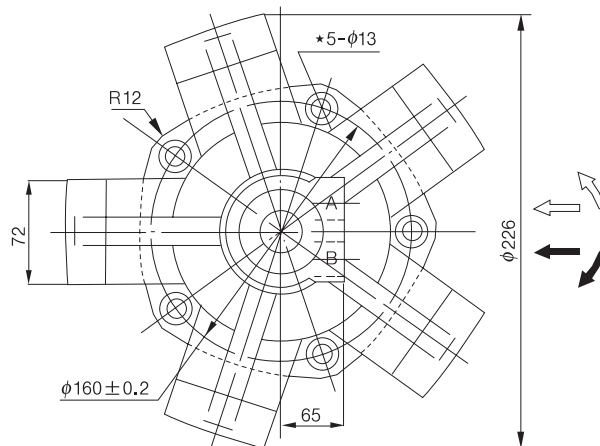
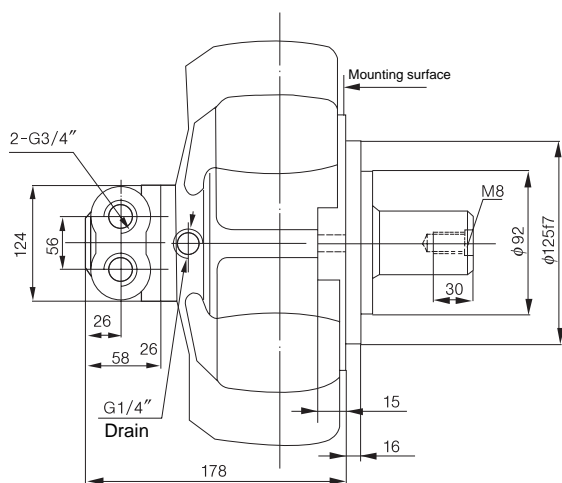
SHM Piston Hydraulic Motor

Technical Specification

TYPE SHM	Displacement (cc/rev)	Pressure (Mpa)		Torque (N.m)		Speed Range (r/min)	Weight (kg)
		Rated Pressure	Max. Pressure	Rated Torque	Theoric Specific Torque		
SHM1-63	64	25	32	225	9.0	15~1500	20
SHM1-80	78	25	32	300	12	15~1250	
SHM1-100	96	25	32	350	14	15~1000	
SHM1-125	126	20	25	380	19	15~1000	
SHM1-160	159	20	25	472	23	15~1000	
SHM2-100	113	25	32	420	18	15~1250	27
SHM2-150	159	25	32	620	25	15~1000	
SHM2-175	180	20	25	526	28	15~1000	
SHM2-200	206	20	25	600	32	8~800	
SHM2-250	235	16	20	607	40	8~630	
SHM2-280	276	16	20	670	44	8~500	
SHM3-175	181	25	32	710	28	8~1000	35
SHM3-200	201	25	32	800	32	8~800	
SHM3-250	254	25	32	949	40	8~630	
SHM3-300	289	20	25	864	46	6~500	
SHM3-350	340	20	25	1040	55	6~400	
SHM3-400	380	16	20	949	63	6~400	
SHM6-400	397	25	32	1483	63	5~630	57.5
SHM6-450	452	25	32	1638	72	5~630	
SHM6-500	491	20	25	1463	78	5~500	
SHM6-600	594	20	25	1775	94	4~500	
SHM6-700	683	16	20	1633	103	4~400	
SHM6-750	754	16	20	1760	110	4~320	94
SHM11-700	682	25	32	2667	114	4~400	
SHM11-800	782	25	32	2959	120	4~400	
SHM11-900	894	25	32	3480	140	4~400	
SHM11-1000	981	20	25	2974	158	3~320	
SHM11-1100	1104	20	25	3336	177	3~320	
SHM11-1200	1234	16	25	3512	187	3~320	
SHM11-1300	1301	16	20	3080	197	3~250	170
SHM16-1400	1413	25	32	5138	210	2~400	
SHM16-1600	1648	20	32	6158	262	2~400	
SHM16-1800	1814	20	25	5433	283	2~320	
SHM16-2000	2034	16	25	6030	323	2~320	
SHM16-2400	2267	16	20	5763	360	2~250	298
SHM31-2500	2553	25	32	9523	405	2~250	
SHM31-2800	2683	25	32	10559	443	1~200	
SHM31-3000	3063	20	25	9135	485	1~200	
SHM31-3150	3218	20	25	9392	500	1~200	
SHM31-3500	3462	20	25	10220	544	1~160	
SHM31-4000	4152	20	25	12481	665	1~160	
SHM31-5000	4828	16	20	12387	825	1~160	700
SHM100-6300	6765	25	32	22916	975	0.5~125	
SHM100-8000	8298	25	32	28744	1223	0.5~125	
SHM100-10000	9982	20	25	31942	1699	0.3~100	1000
SHM160-12500	13333	20	25	39460	1973	0.3~80	
SHM160-16000	16039	20	25	46420	2376	0.2~63	

SEWON Hydraulics

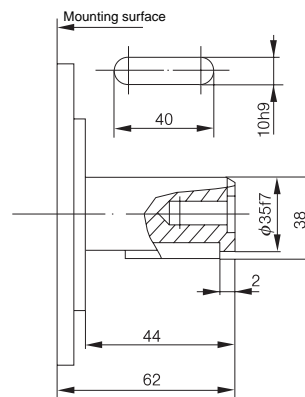
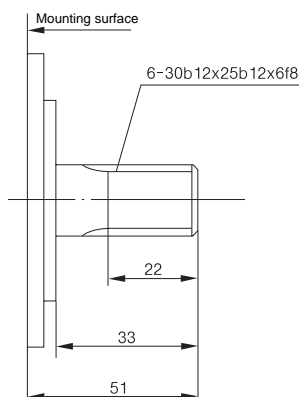
SHM1-63~160 Mounting connection dimension



★ φ 13 mounting holes of five evenly placed.

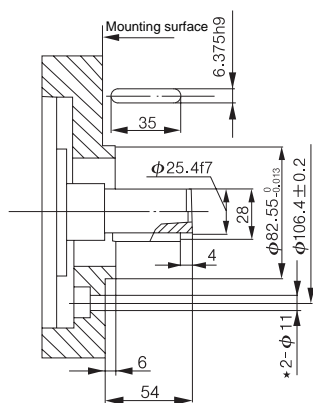
Standard external splines : SHM1-**-**

Standard parallel key : SHM1-**-**B

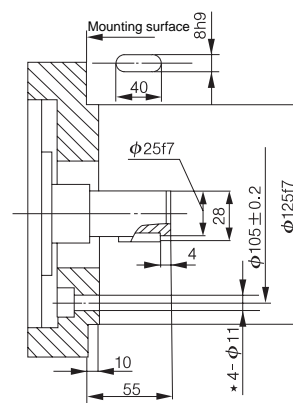


SHM1-**-**B₃

SHM1-**-**B₁



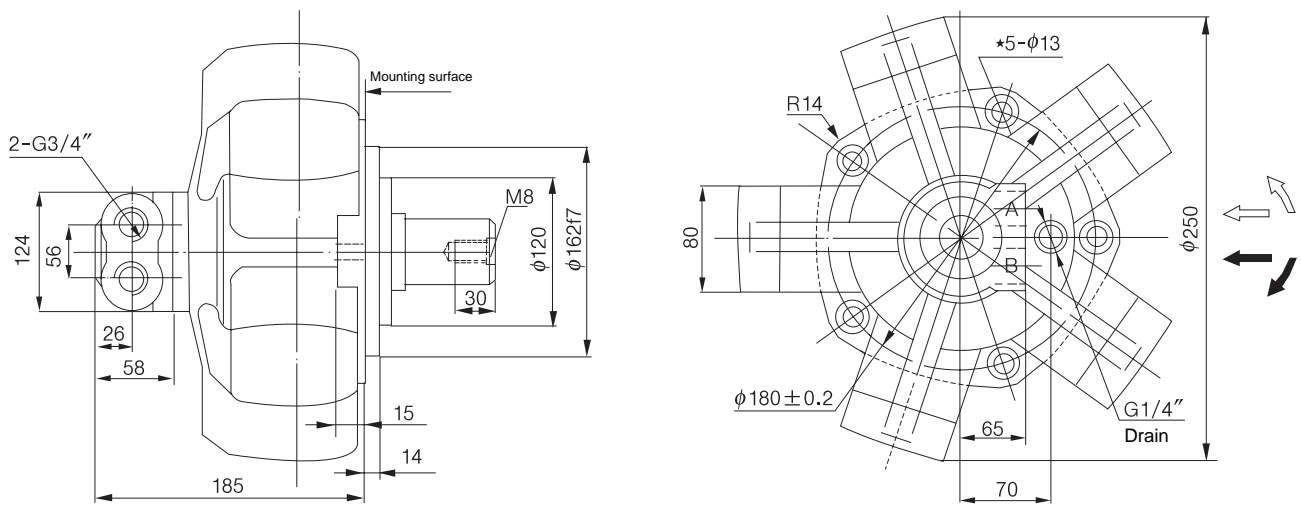
★ φ 11 mounting holes of two evenly placed.



★ φ 11 mounting holes of four evenly placed.

SHM Piston Hydraulic Motor

SHM2-100~250 Mounting connection dimension

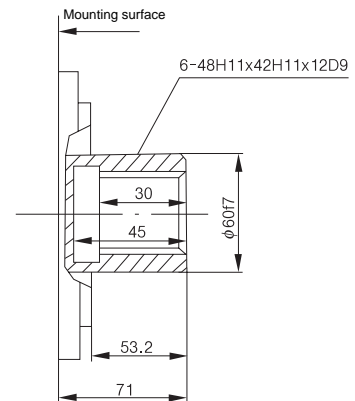
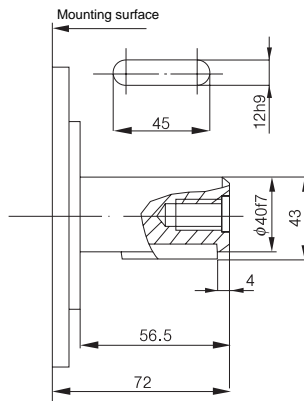
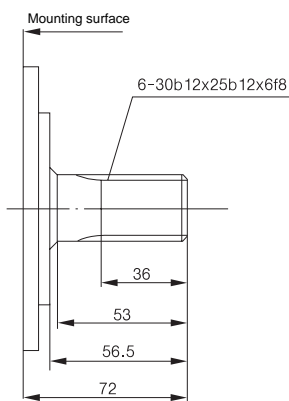


★ $\phi 13$ mounting holes of five evenly placed.

Standard external splines : SHM2-**

Standard parallel key : SHM2-**B

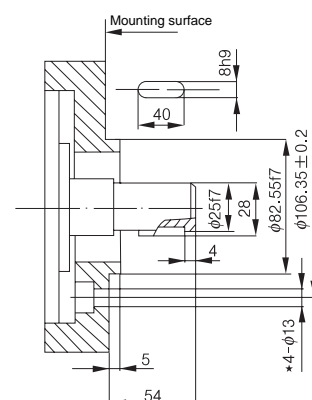
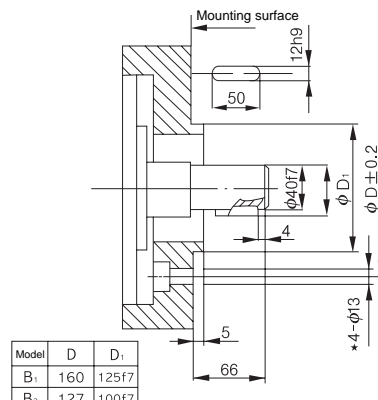
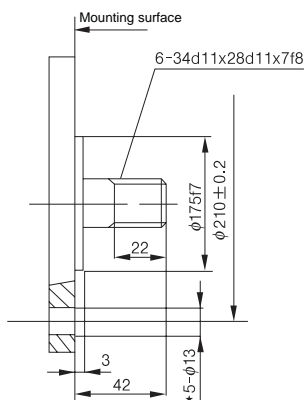
Standard internal splines : SHM2-**I



SHM2-**SL₁

SHM2-**B₁ • B₂

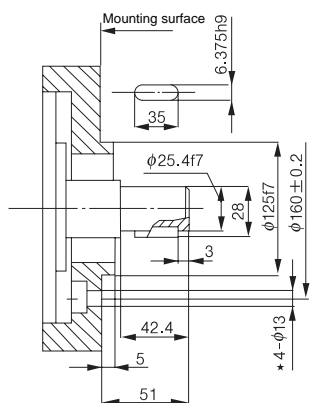
SHM2-**B_{2.1}



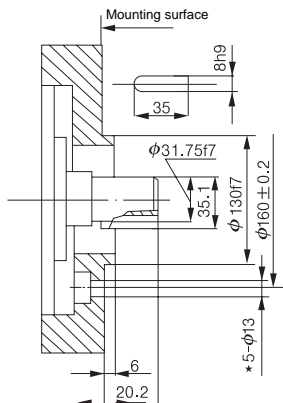
★ $\phi 13$ mounting holes of five evenly placed. ★ $\phi 13$ mounting holes of four evenly placed. ★ $\phi 13$ mounting holes of four evenly placed.

SEWON Hydraulics

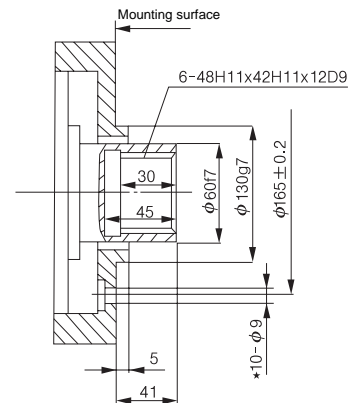
SHM2-**B₃



SHM2-**B₁₄



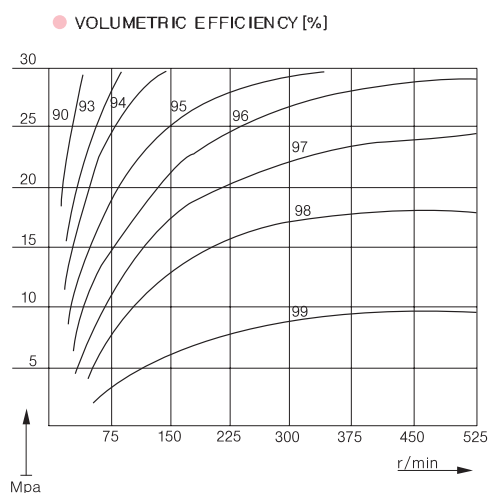
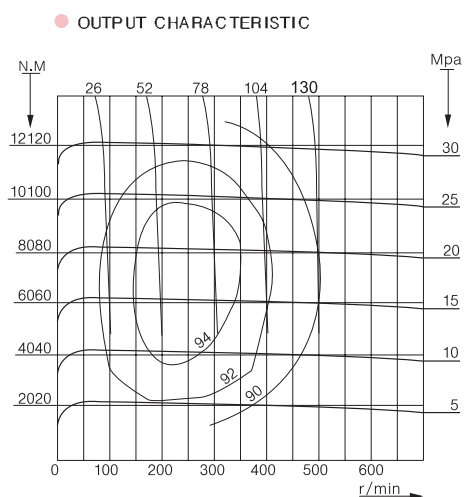
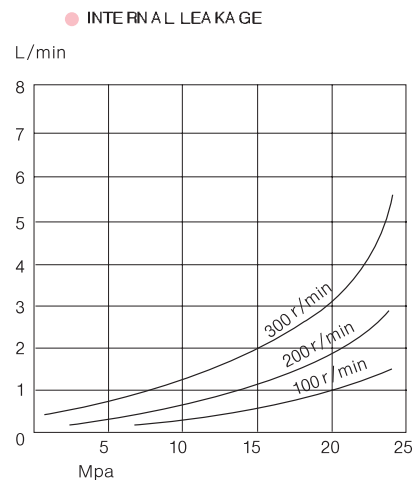
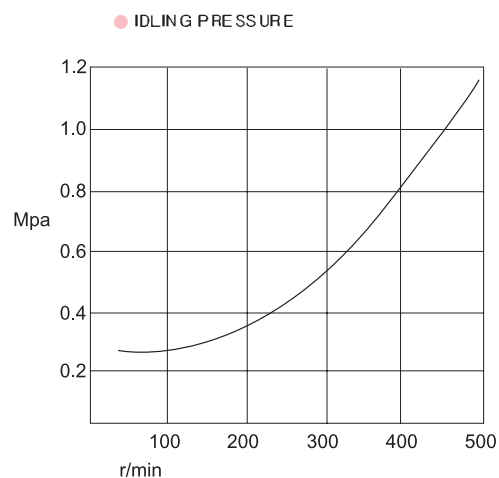
SHM2-**I₀₁ • I₀₂



★ φ13 mounting holes of four evenly placed. ★ φ13 mounting holes of five evenly placed. ★ φ9 mounting holes of ten evenly placed.

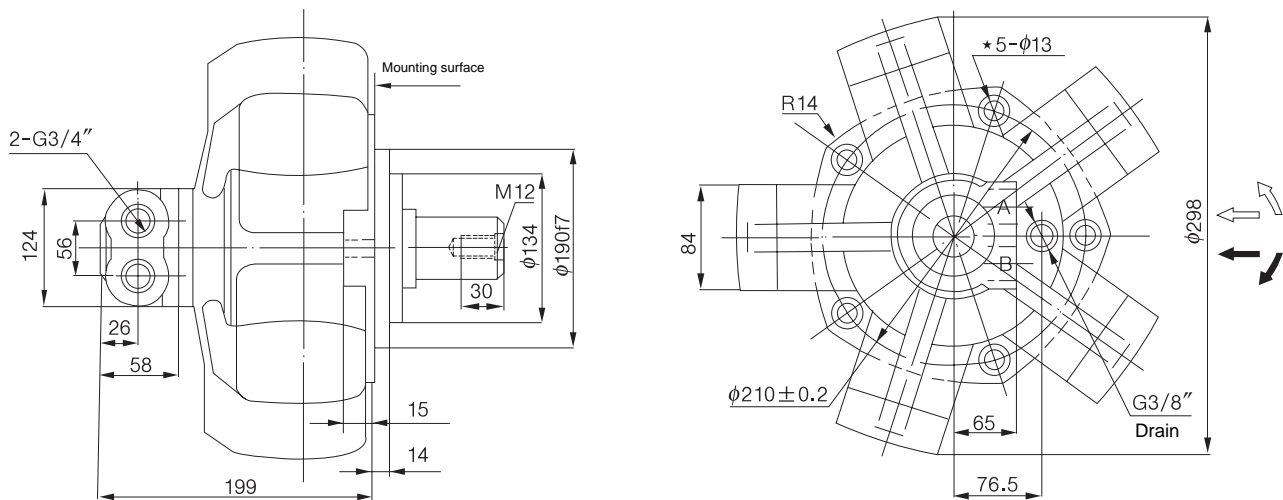
SHM2 Performance Curve

SHM2-250



SHM Piston Hydraulic Motor

SHM3-200~400 Mounting connection dimension

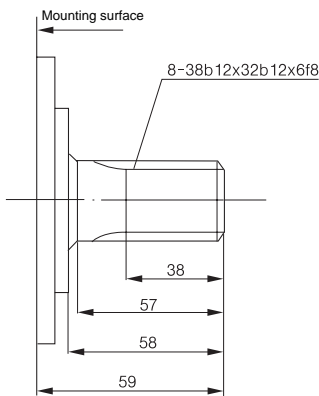


★ $\phi 13$ mounting holes of five evenly placed.

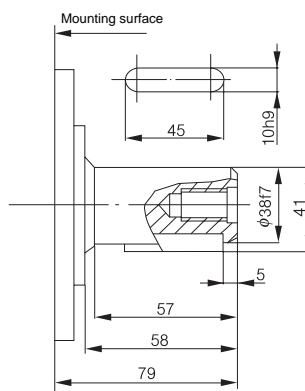
Standard external splines : SHM3-**

Standard parallel key: SHM3-**B

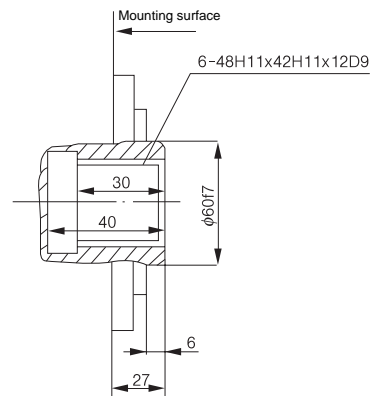
Standard internal splines : SHM3-**I



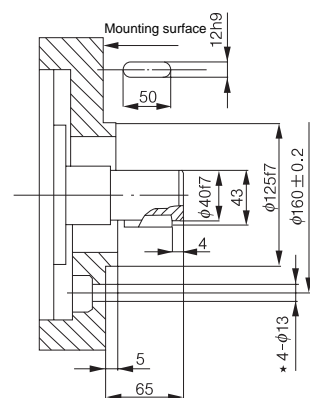
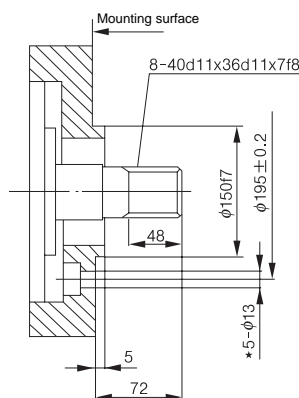
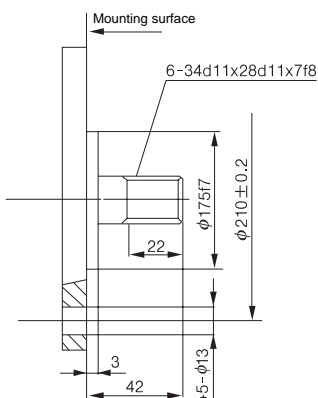
SHM3-**SL₁



SHM3-**SL₂



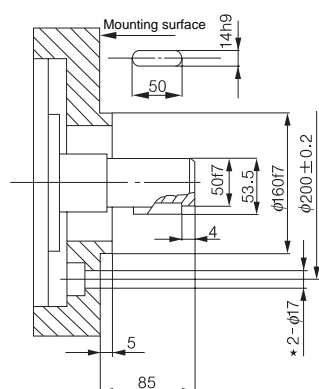
SHM3-**B₁



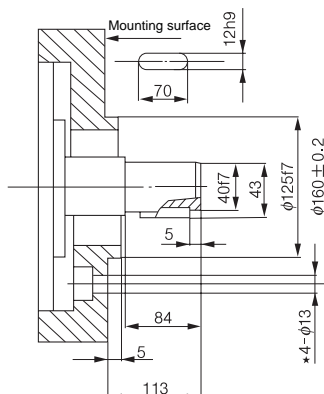
★ $\phi 13$ mounting holes of five evenly placed. ★ $\phi 13$ mounting holes of five evenly placed. ★ $\phi 13$ mounting holes of four evenly placed.

SEWON Hydraulics

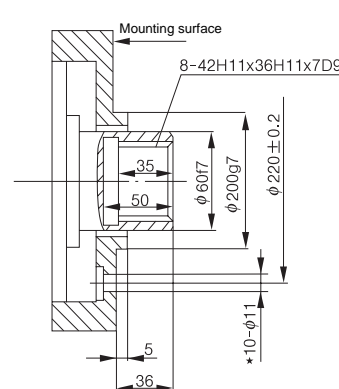
SHM3-**B₂



SHM3-**B₆



SHM3-**I_{1A1}

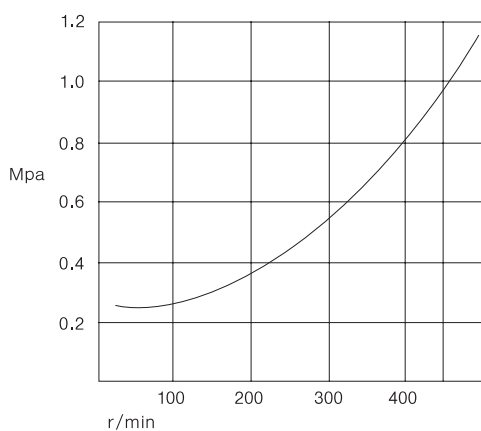


★φ17 mounting holes of two evenly placed. ★φ13 mounting holes of four evenly placed. ★φ11 mounting holes of ten evenly placed.

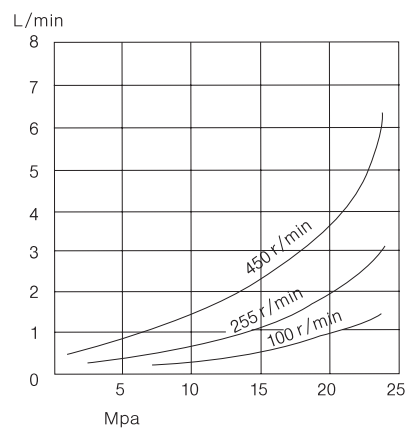
SHM3 Performance Curve

SHM3-300

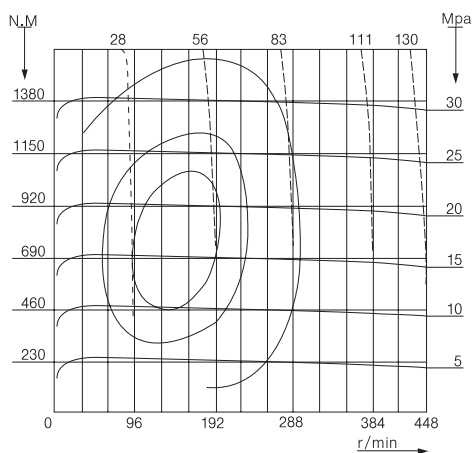
● IDLING PRESSURE



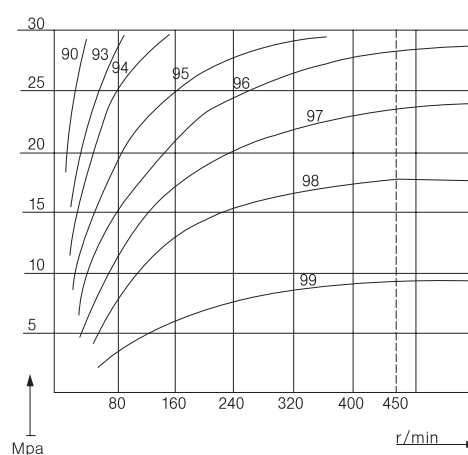
● INTERNAL LEAKAGE



● OUTPUT CHARACTERISTIC

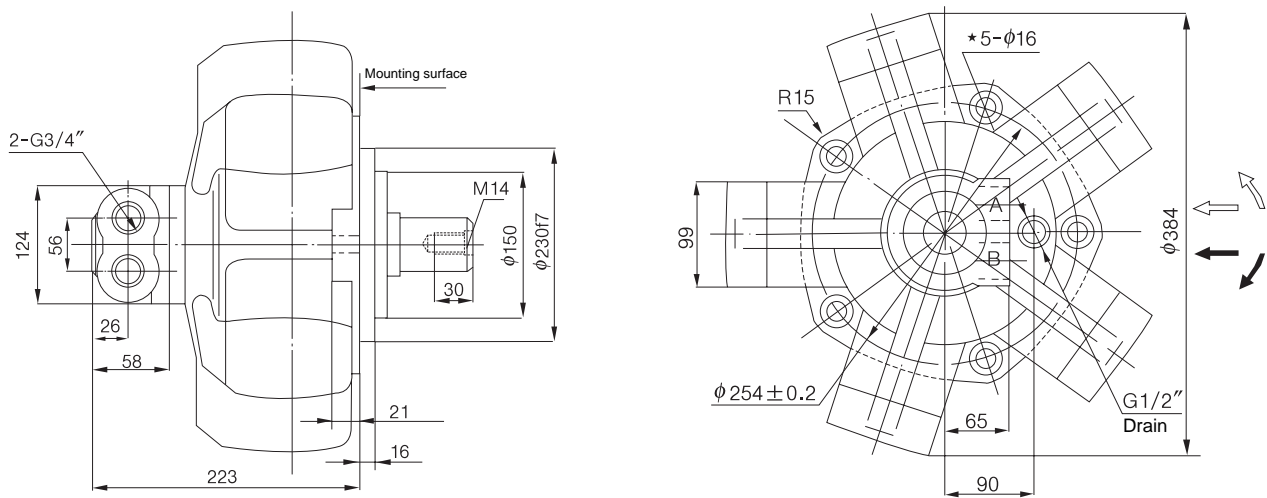


● VOLUMETRIC EFFICIENCY [%]



SHM Piston Hydraulic Motor

SHM6-400~750 Mounting connection dimension

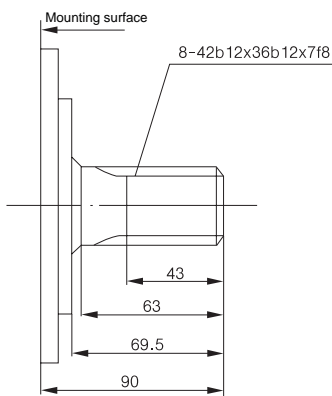


★ $\phi 16$ mounting holes of five evenly placed.

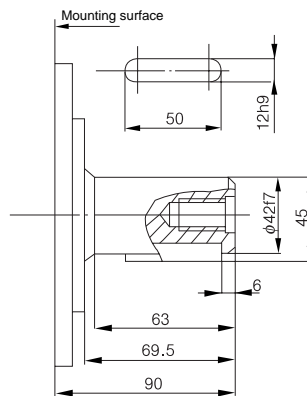
Standard external splines : SHM6-**

Standard parallel key : SHM6-**B

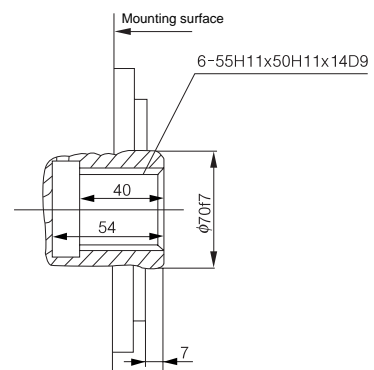
Standard internal splines : SHM6-**I



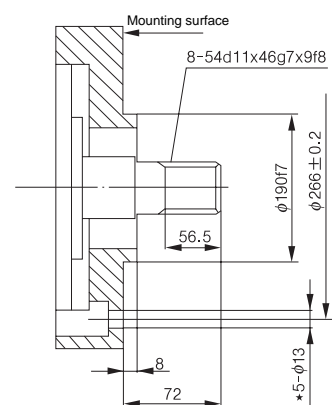
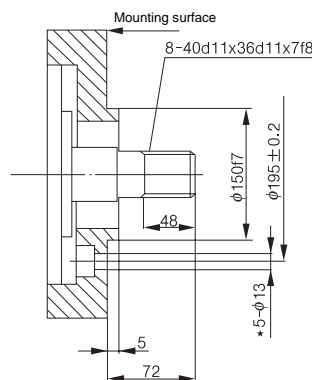
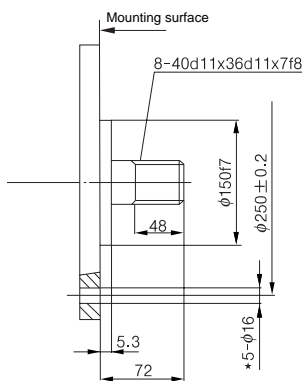
SHM6-**SL₃



SHM6-**SL₂



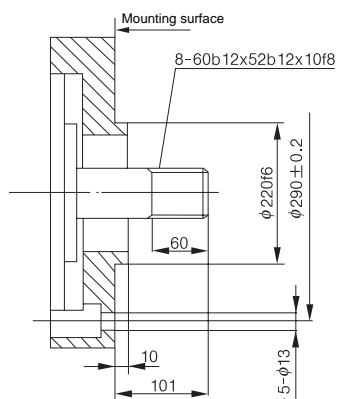
SHM6-**N



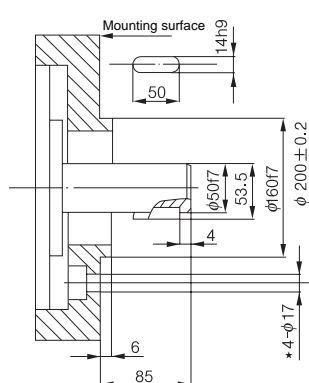
★ $\phi 16$ mounting holes of five evenly placed. ★ $\phi 13$ mounting holes of five evenly placed. ★ $\phi 13$ mounting holes of five evenly placed.

SEWON Hydraulics

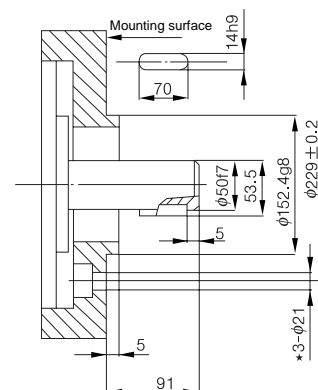
SHM6-**N₁



SHM6-**B₂

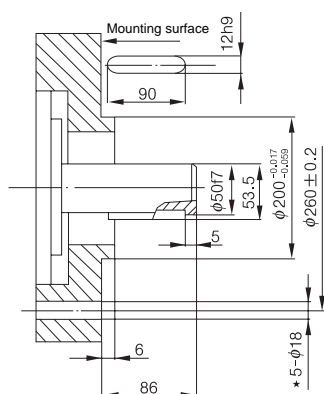


SHM6-**B₄

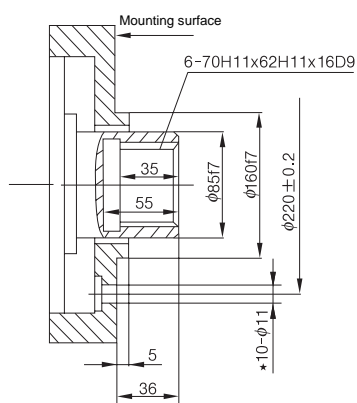


$\star \phi 13$ mounting holes of five evenly placed. $\star \phi 17$ mounting holes of four evenly placed. $\star \phi 21$ mounting holes of three evenly placed.

SHM6-**B₁₃



SHM6-**I₁₁

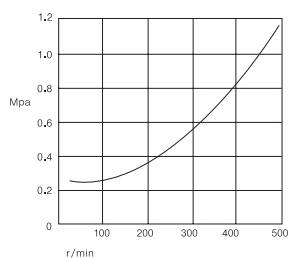


$\star \phi 18$ mounting holes of five evenly placed. $\star \phi 11$ mounting holes of ten evenly placed.

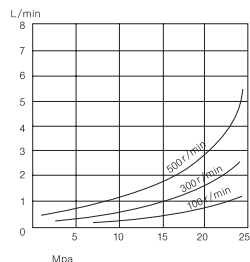
SHM6 Performance Curve

SHM6-500

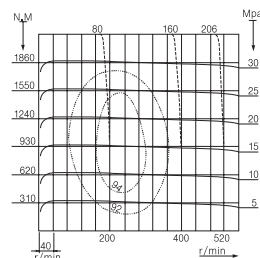
● IDLING PRESSURE



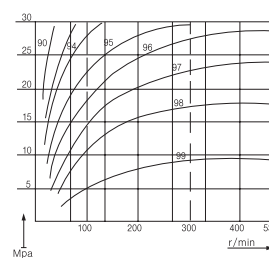
● INTERNAL LEAKAGE



● OUTPUT CHARACTERISTIC

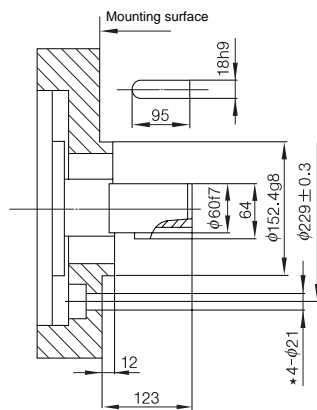


● VOLUMETRIC EFFICIENCY [%]

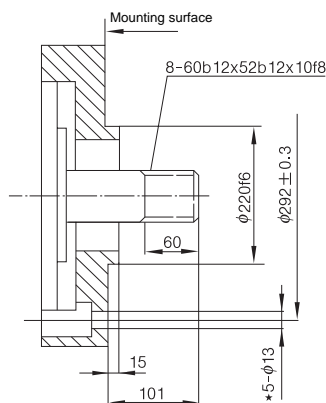


SEWON Hydraulics

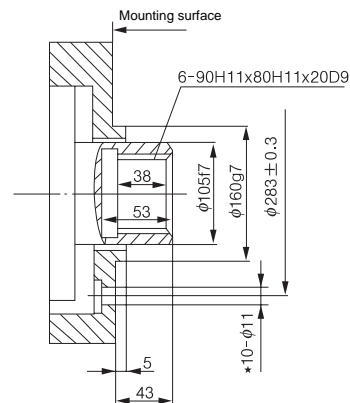
SHM11-**-B₆



SHM11-**-N₁

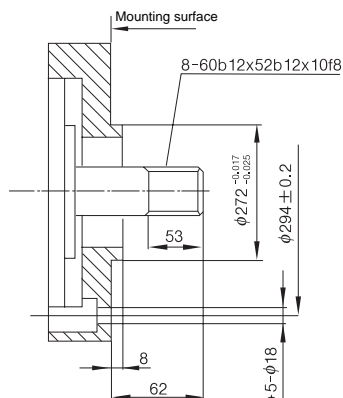


SHM11-**-I₂₁

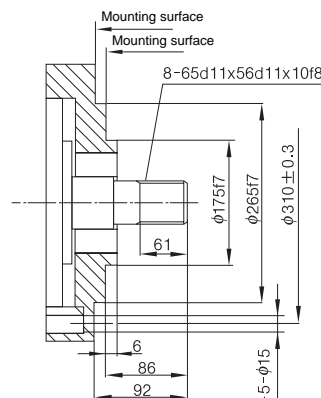


★ $\phi 21$ mounting holes of four evenly placed. ★ $\phi 13$ mounting holes of five evenly placed. ★ $\phi 11$ mounting holes of ten evenly placed.

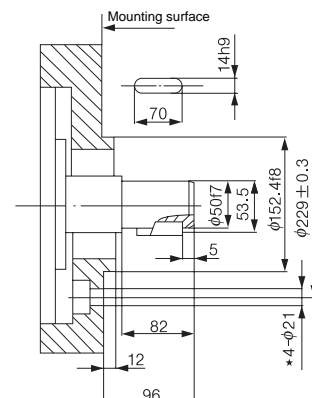
SHM11-**-N



SHM11-**-SL₅



SHM11-**-B₁

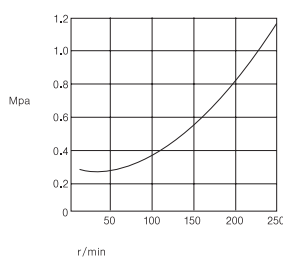


★ $\phi 18$ mounting holes of five evenly placed. ★ $\phi 15$ mounting holes of five evenly placed. ★ $\phi 21$ mounting holes of four evenly placed.

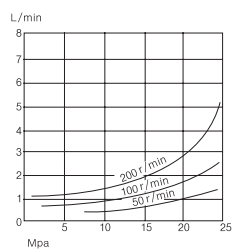
SHM11 Performance Curve

SHM11-800

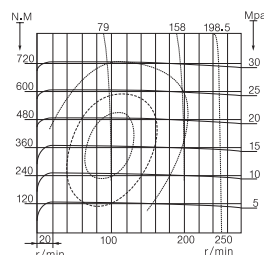
● IDLING PRESSURE



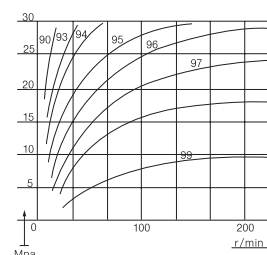
● INTERNAL LEAKAGE



● OUTPUT CHARACTERISTIC

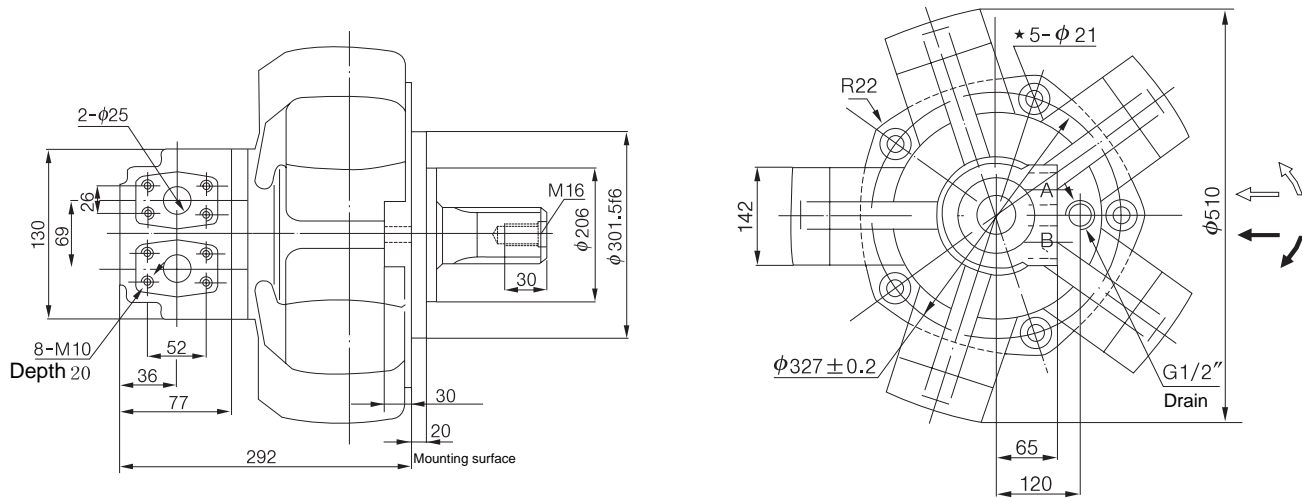


● VOLUMETRIC EFFICIENCY [%]



SHM Piston Hydraulic Motor

SHM16-1400~2400 Mounting connection dimension

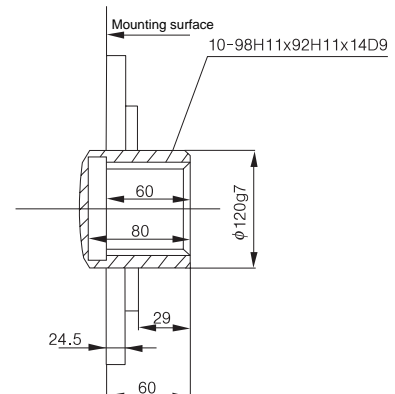
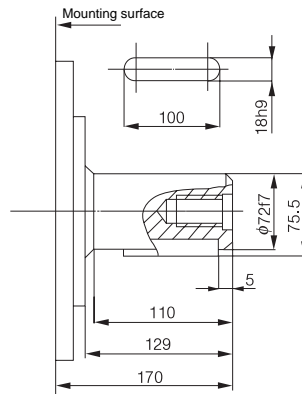
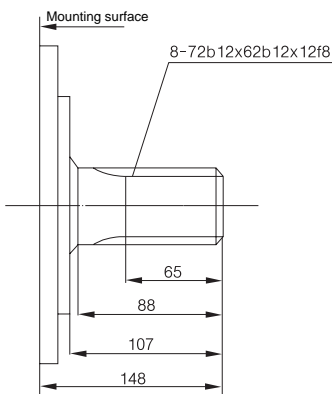


★φ21 mounting holes of five evenly placed.

Standard external splines : SHM16-***

Standard parallel key : SHM16-***B

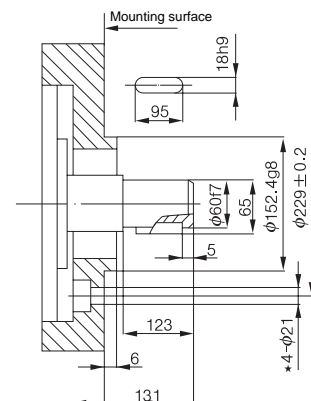
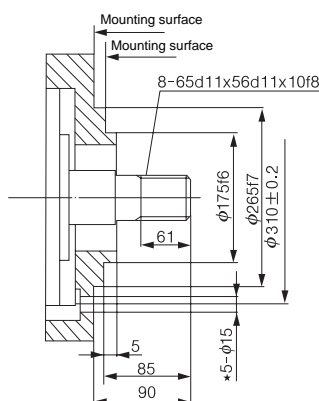
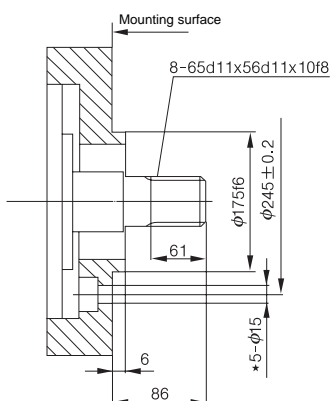
Standard internal splines : SHM16-***I



SHM16-***SM₄

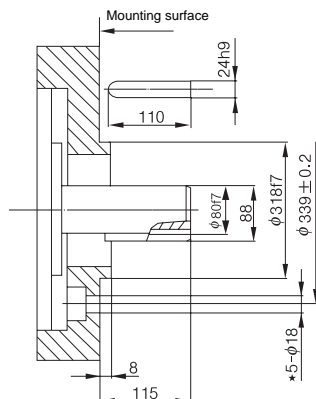
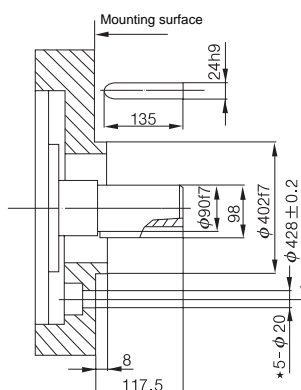
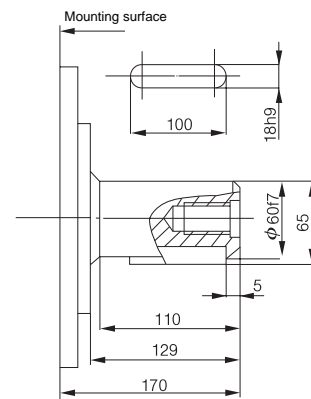
SHM16-***SL₅

SHM16-***B₆

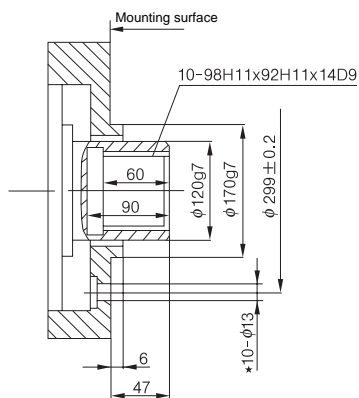
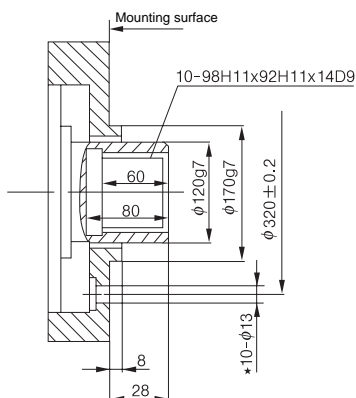


★φ15 mounting holes of five evenly placed.★φ15 mounting holes of five evenly placed.★φ21 mounting holes of four evenly placed.

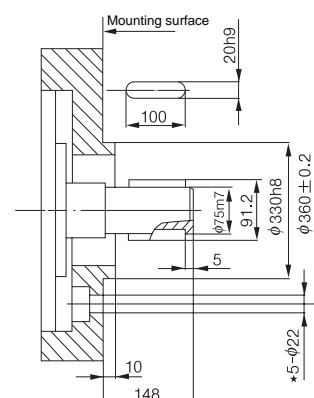
SHM16-**-B7

SHM16-**-B₁₈SHM16-**B₁₉

★ $\phi 18$ mounting holes of five evenly placed. ★ $\phi 20$ mounting holes of five evenly placed.

SHM16-** I₃₂SHM16-**I₄₂

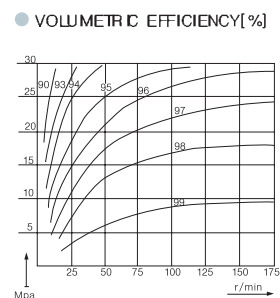
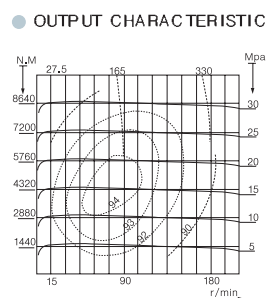
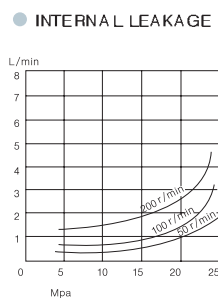
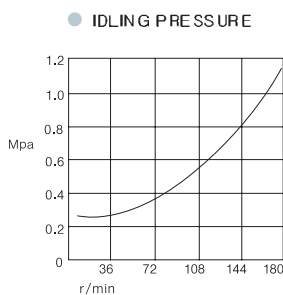
SHM16-**-D



★ $\phi 13$ mounting holes of ten evenly placed. ★ $\phi 13$ mounting holes of ten evenly placed. ★ $\phi 22$ mounting holes of five evenly placed.

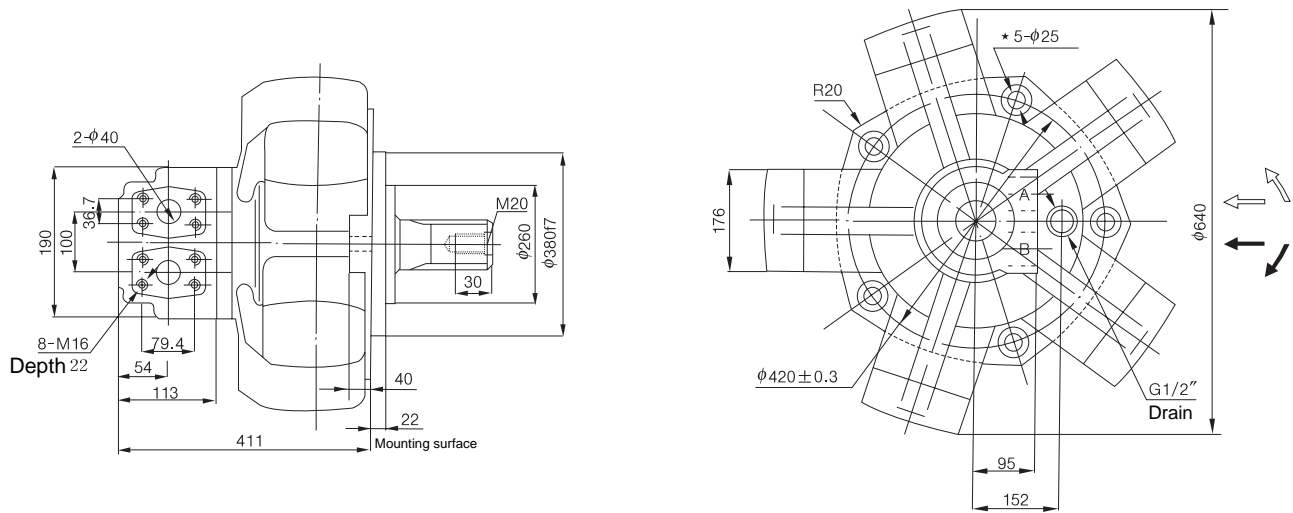
SHM16 Performance Curve

SHM16-1800



SHM Piston Hydraulic Motor

SHM31-2500~5000 Mounting connection dimension

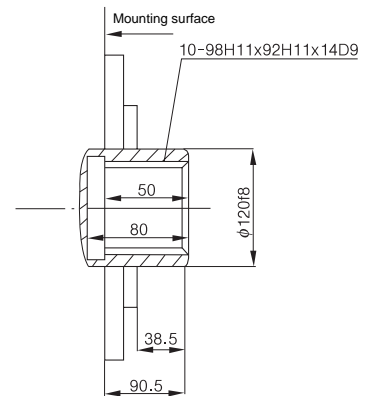
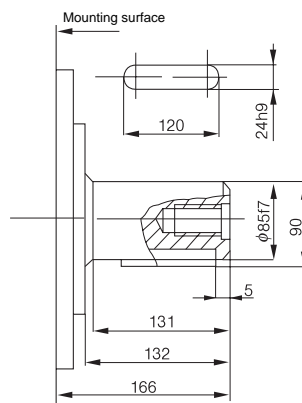
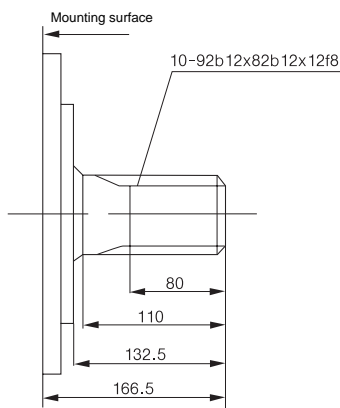


★ $\phi 25$ mounting holes of five evenly placed.

Standard external splines : SHM31 —**

Standard parallel key: SHM31 —**B

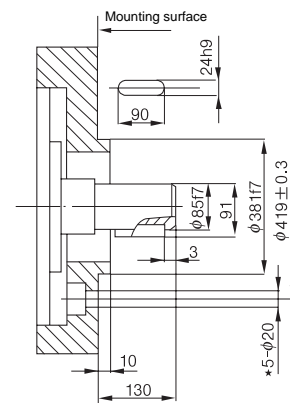
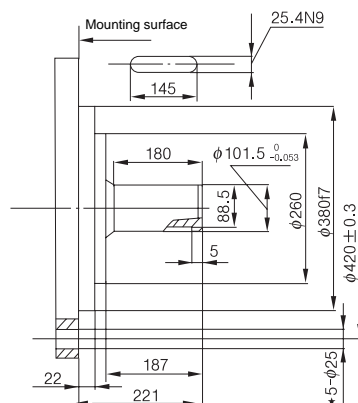
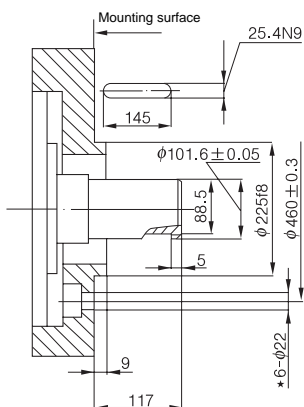
Standard internal splines : SHM31 —**I



SHM31 —**B₆

SHM31 —**B₁₀

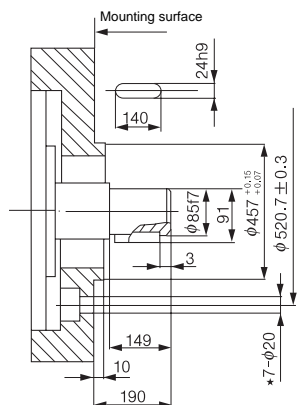
SHM31 —**B₂₁



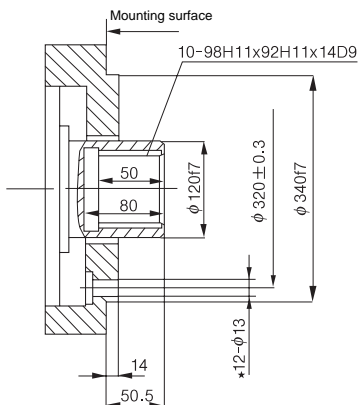
★ $\phi 22$ mounting holes of six evenly placed. ★ $\phi 25$ mounting holes of five evenly placed. ★ $\phi 22$ mounting holes of five evenly placed.

SEWON Hydraulics

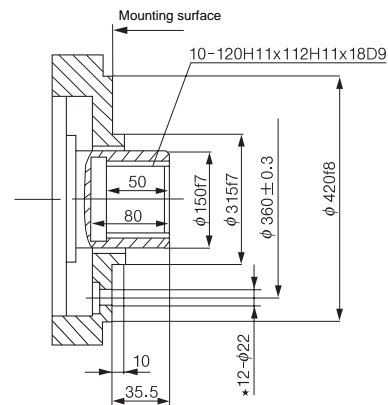
SHM31-**-B₂



SHM31-**-I₃₂



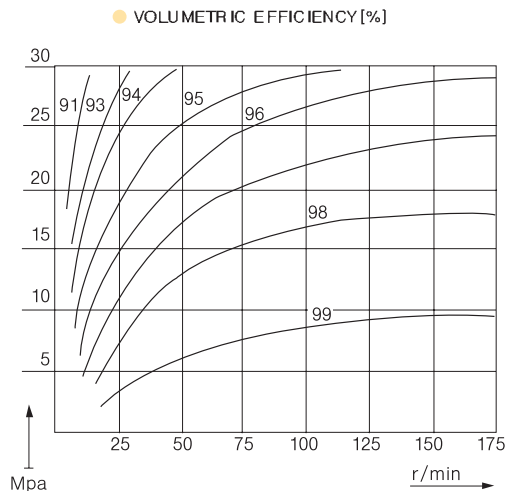
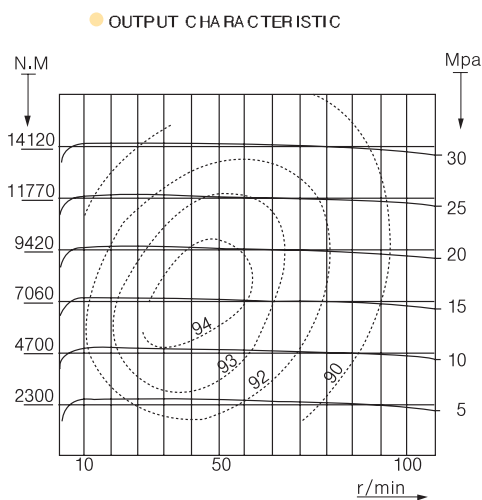
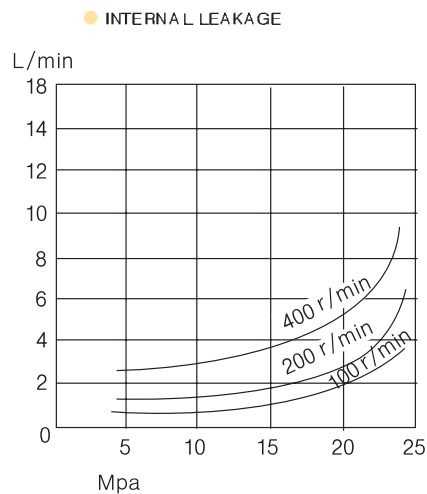
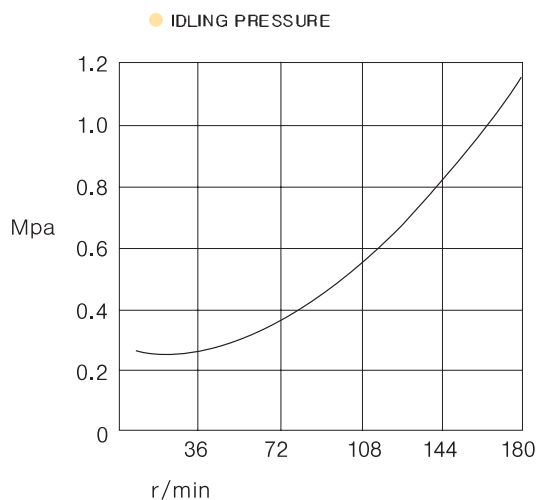
SHM31-**-I₅₂



★ $\phi 20$ mounting holes of seven evenly placed. ★ $\phi 13$ mounting holes of twelve evenly placed. ★ $\phi 22$ mounting holes of twelve evenly placed.

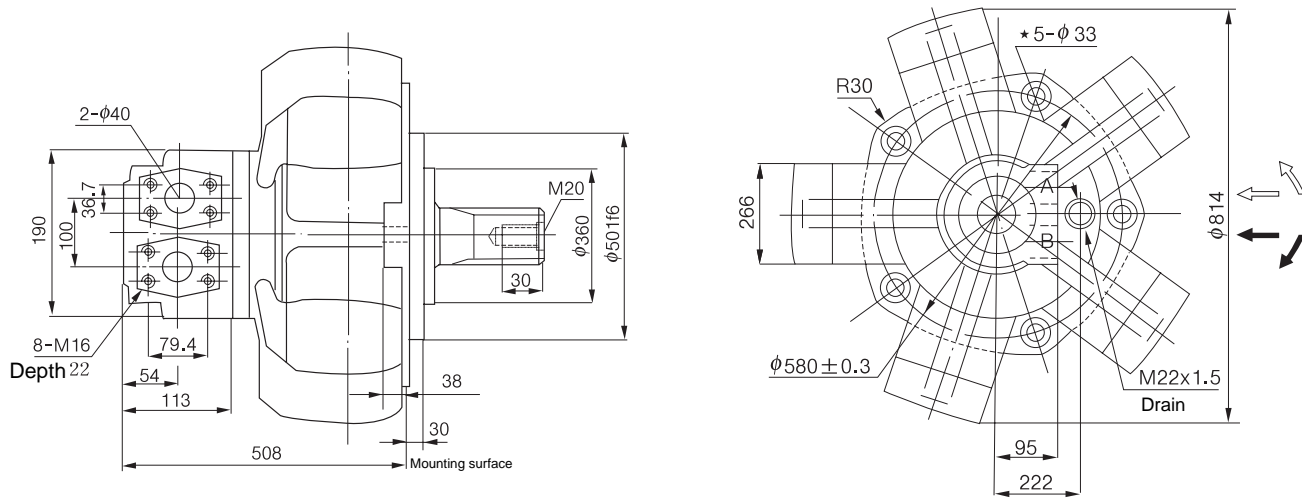
SHM31 Performance Curve

SHM31-3150



SHM Piston Hydraulic Motor

SHM100-6300~10000 Mounting connection dimension

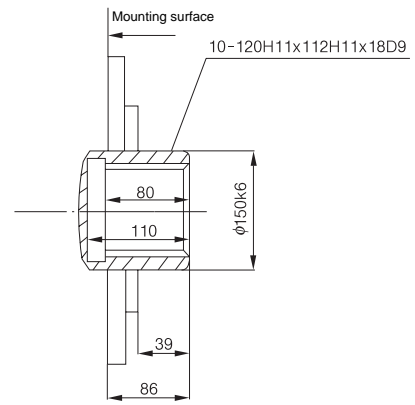
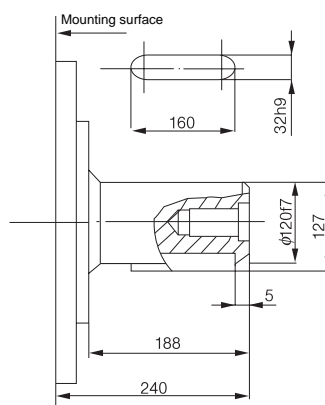
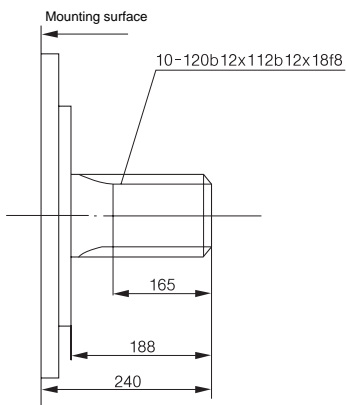


★ $\phi 33$ mounting holes of five evenly placed.

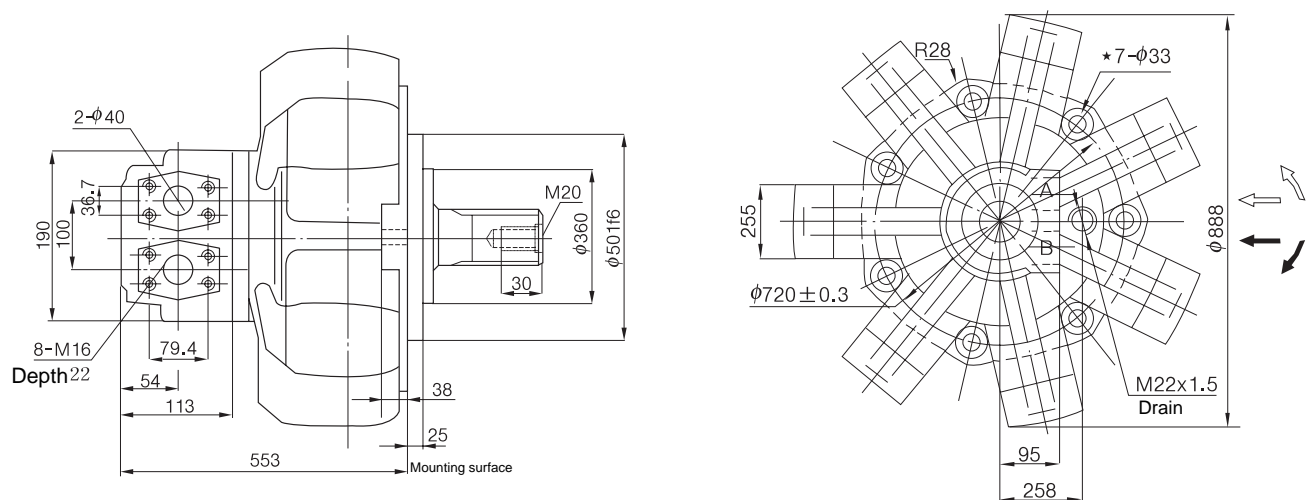
Standard external splines: SHM100-***

Standard parallel key: SHM100-***B

Standard internal splines: SHM100-***I

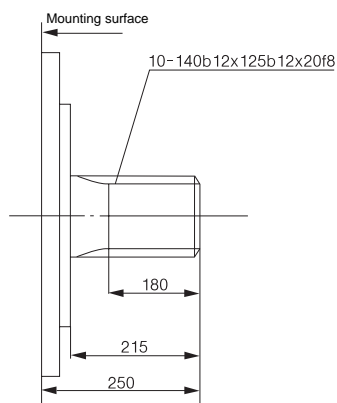


SHM160-12500~16000 Mounting connection dimension

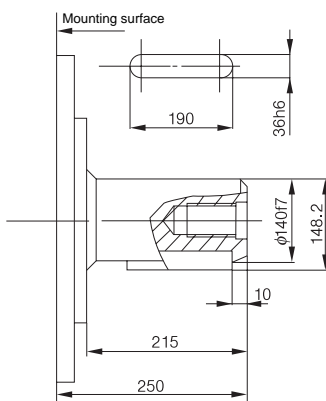


★ $\phi 33$ mounting holes of seven evenly placed.

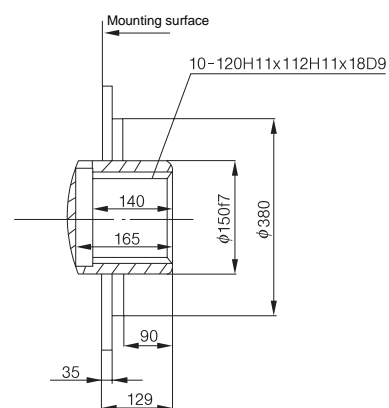
Standard external splines: SHM160-**



Standard parallel key: SHM160-**B



Standard internal splines: SHM160-**I



SHM Piston Hydraulic Motor

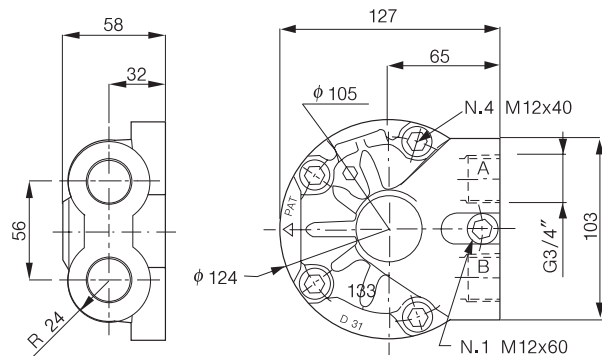
OPTION FOR DISTRIBUTOR

D31

Distributor with 3/4" ports for SHM1, SHM2, SHM3, SHM6 series motors.

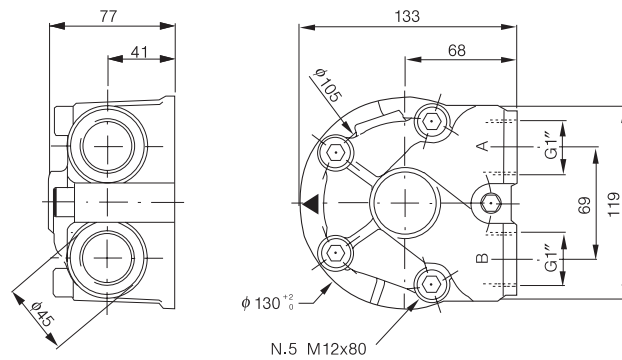
D310

As D31, with 1" ports
Weight : 3kg



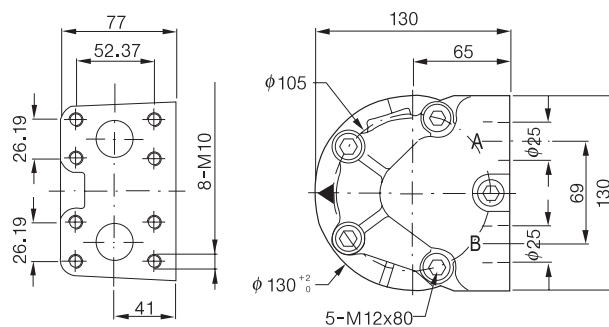
D40

Standard distributor for SHM11, and small motors in the condition of high speed.
Weight : 5kg



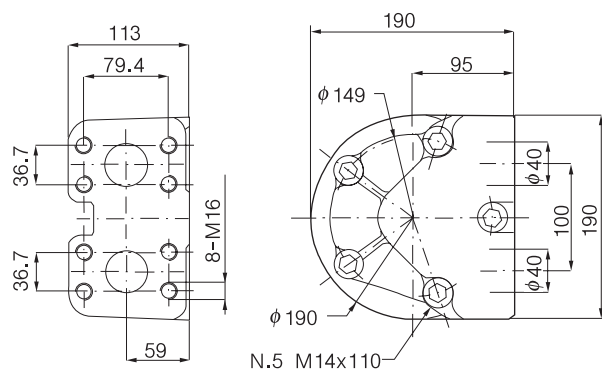
D47

Distributor with 25 flanges for SHM16 series motor.
Weight : 6kg



D90

Standard distributor for SHM31, SHM100, SHM160 series motors.
Weight : 14.5kg

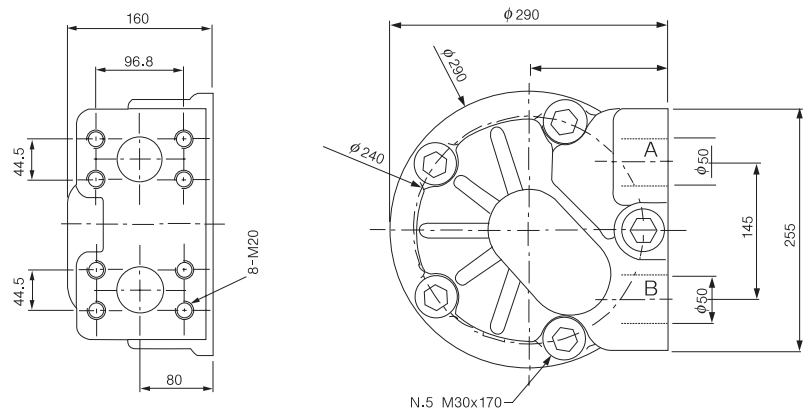


OPTION FOR DISTRIBUTOR

D250

High flow distributor

Weight : 50kg



MECHALICAL TACHOMETER

You can install a tachometer according to customer requirements. (Device for measuring the speed)

