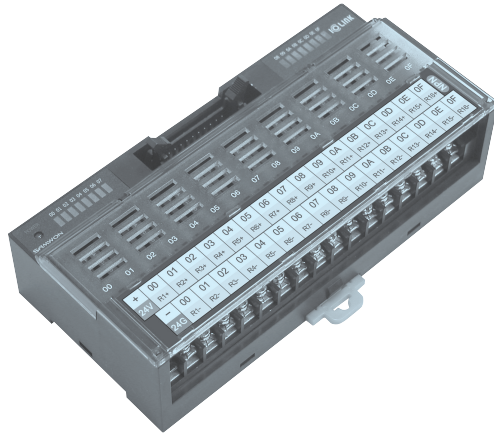


S16C Series 16Points PhotoMOS Relay mounted

User's Guide



Thank you for purchasing product of SAMWON ACT.
Please check model of product that you purchase first, and read this manual prior to use it.

• Caution for Safety

⚠ Caution Case that results in serious damage in human body or equipment, and fire if user handles this equipment wrongly

⚠ Warning Case that results in slight damage in human body or equipment, and fire if user handles this equipment wrongly

⚠ Caution

1. Do Not use other voltage except appointed voltage. It may be the cause of fire or damage of equipment.
2. Use it within nominal voltage and current which are marked on load.
It may be the cause of fire or damage of equipment.
3. Check COMMON polarity of using controller (PLC, etc) first, and then select proper product.
It may be the cause of fire or damage of this equipment and user's.
1) COMMON Polarity of controller is '+' (NPN TYPE) : S16C-NC-202D
2) COMMON Polarity of controller is '-' (PNP TYPE) : S16C-PC-202D
4. Make controller and connection cable between relay boards after checking internal wiring of relay board and PIN (terminal or socket) array of controller if you want to make it for yourself.
It may be the cause of fire, and malfunction or damage of this equipment and user's.

※ The connection cable for PLC of various makers is provided by us. Please refer to the catalogue or contact Head or branch office if you need more detail models and specifications.

⚠ Warning

1. Plug or unplug power line and/or connector for signal after making sure to shut off power so as that it is prevented to be damaged or malfunctioned.
2. Read this user's guide which is attached to product, and check product's performance, specification, operation pattern, signal, and how to handle prior to use. Keep user's guide please.
3. When wiring the terminal block, please tighten it with the specified torque using the appropriate tool.
If it is outside of this range torque, it may cause malfunction due to breakage or looseness of tightening surface terminal.
4. Use removal key which is supplemented for replacement.
Using other tools may be the cause of damage of relay or relay socket.

• Model Selection

Model	Installation Relay	IO Point(s)	Coil Rated voltage	Common		Interface		Dimensions (W * Dmm)	Mounting method
				Coil	Contact	Coil	Contact		
S16C-NC-202D	PANASONIC AQZ202D	16 Point (1a*16)	5~24V DC	NPN \ominus COM	Individual Com. (8P Short bar built)	Connector MIL-C-83503 20Pin	Screw Terminal 7.62Pitch 34Pole	143.6*70.0	DIN Rail (Channel)
S16C-PC-202D				PNP \ominus COM					

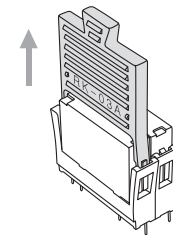
• AQZ202D Specification (Ambient temperature 25°C)

Item				AQZ202D
Input	Input voltage			30V
	Input reverse voltage			5V
	Power dissipation			300mW
	Operate voltage	Typical	1.4V	
		Maximum	4V	
	Turn off voltage	Minimum	0.8V	
Typical		1.3V		
Output	Load voltage (Peak AC)			60V
	Continuous load current (Peak AC)			2.7A
	Peak load current			9.0A
	Power dissipation			1.6W
Transfer characteristics	Switching speed	Turn on time	Typical	5.8ms
			Maximum	10.0ms
		Turn off time	Minimum	0.2ms
			Typical	3.0ms
Total power dissipation				1.6W
I/O isolation voltage				2,500V AC
Country of origin				JAPAN

• Material

Case	Modified PPO
Protective cover	Polycarbonate
P.C.B	Epoxy 1.6t / 2oz
Applicable wire	AWG22~16 (MAX 1.5mm ²)
Terminal Screw	M3 X 6L
Screw torque	7~8Kgf · cm (0.68~0.78N · m)
Ambient temperature	-10°C ~ +50°C (No condensation)

• How to replace relay (Removal Key is embedded in product)

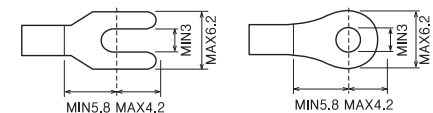


• Accessories

• 8Pole Short bar (2ea)

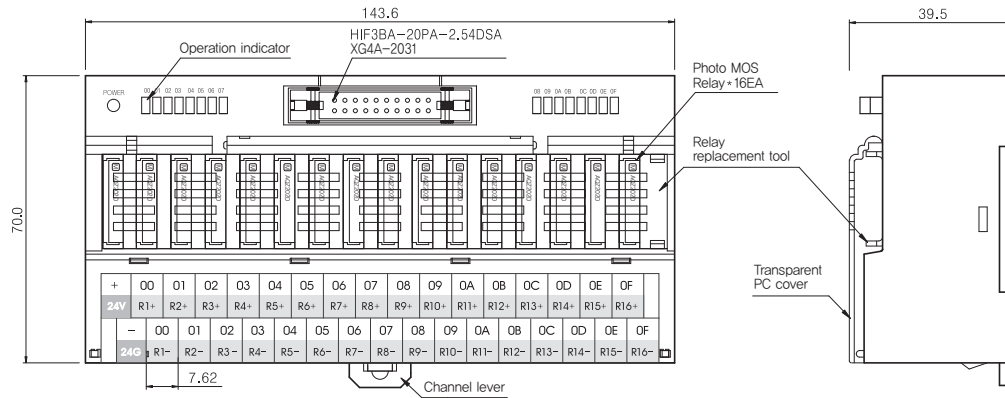


• Applicable crimp terminal



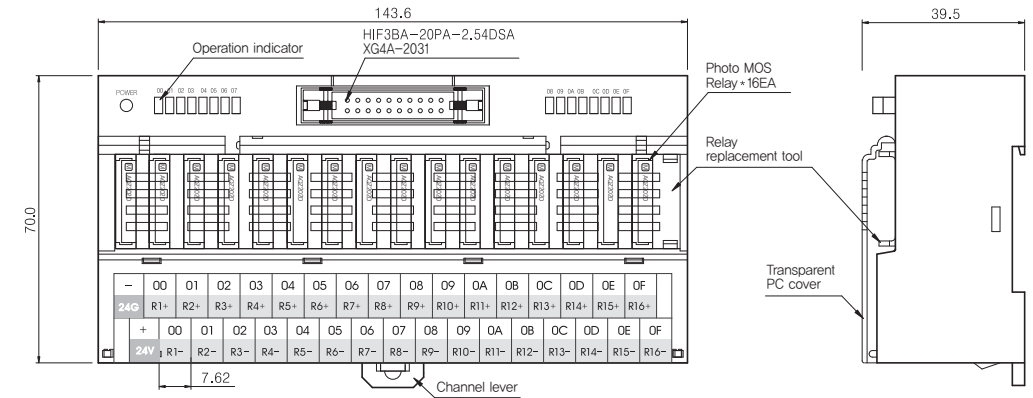
• Dimension

• S16C-NC-202D (NPN) (+COM)



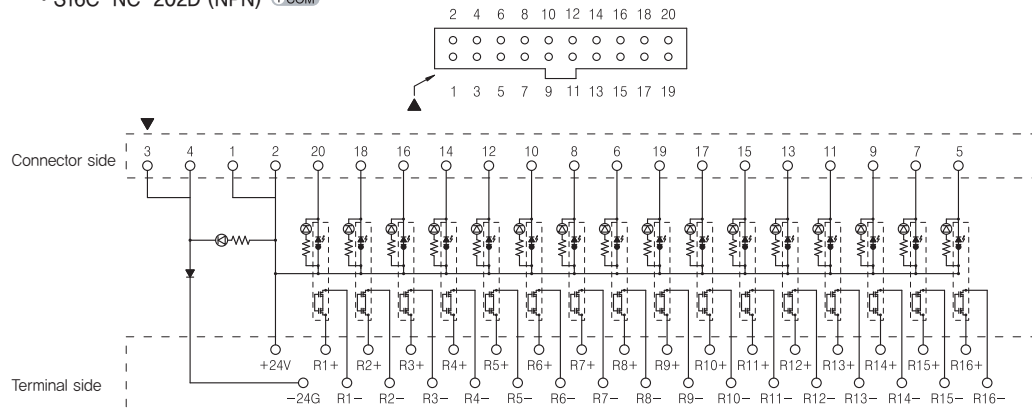
• Dimension

• S16C-PC-202D (PNP) (-COM)



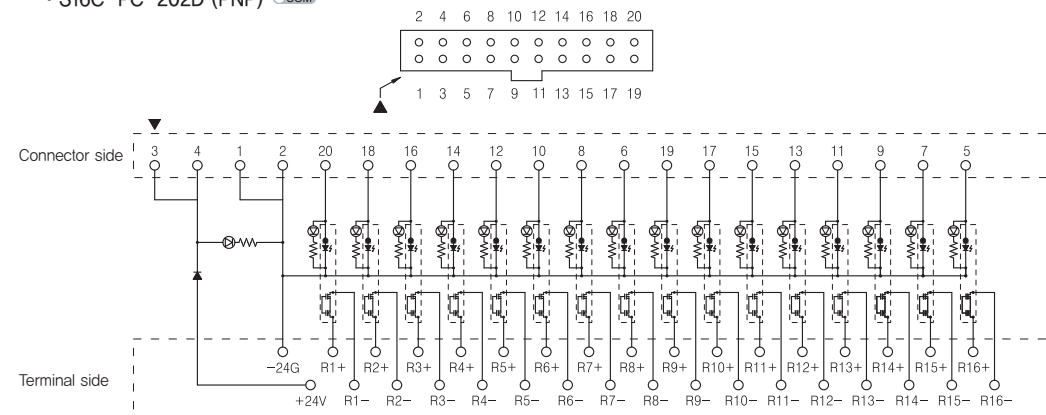
• Wiring Diagram

• S16C-NC-202D (NPN) (+COM)



• Wiring Diagram

• S16C-PC-202D (PNP) (-COM)



※ The above specifications are subject to change without notice.

※ Please contact HQ or branch office where you purchased product for A/S of this product or technique.

Major products

- Relay terminal 1, 2, 4, 6, 8, 16, 32point
- Interface terminal 20, 24, 26, 34, 40, 50, 57, 40 x 2pole
- PLC I/O Connecting cables MITSUBISHI, LSIS, CIMON, OMRON, FUJII, YOKOGAWA, HITACHI, SIEMENS, AB, etc.
- Servo Connecting cables Encoder cable, Power cable, Motion cable / MITSUBISHI, YASKAWA, OMRON, PANASONIC, , LSIS, SAMSUNG, etc.
- Wiring harness / Special cable assembly