

# 1. XG5000 installation

To modify the internal PLC of GIPAM3000, XG5000 program can be installed and LOGIC can be modified by connecting XG5000 and GIPAM3000.

XG5000 installation is as bellows.

STEP1. Download XG5000 software from the LS Electric homepage.

PATH : SUPPORT&SERVICES -> DOWNLOAD CENTER

The screenshot shows the LS ELECTRIC website's 'Support & Services' section. The breadcrumb path is '> Support & Services > Download Center'. The 'Suggested Keyword' bar contains 'PLC', 'HMI', 'HVDC', 'metasol', and 'susol'. The 'Filter by' section on the left includes 'Categories' (Smart Automation Solution, PLC, 3 Depth, 4 Depth) and 'Type' (All, Catalog, Manual, Tech Data, Application, Certification, Software, CAD Data). The 'Results 1 - 10 of 30' section displays three software items: '[PLC] XG5000 V4.50' (414MB), 'XG5000\_V4.30' (355MB), and '[GLOFA-GM] GMWIN' (28MB). The first item is highlighted with a dashed blue box.

1) PATH : SUPPORT&SERVICES -> DOWNLOAD CENTER

2) FILTER

1 DEPTH : Smart Automation selection

2 DEPTH : PLC selection

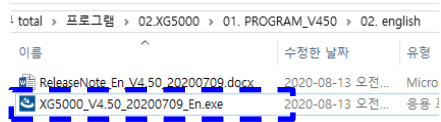
3 DEPTH

-

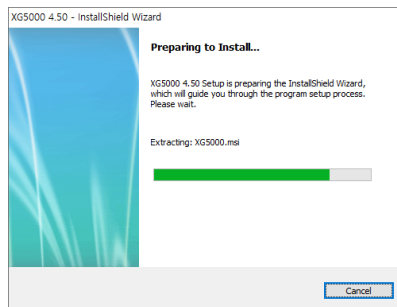
# 1. XG5000 installation

STEP2. install the XG5000 execute file as shown below.

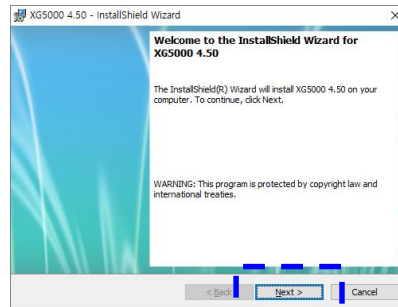
1) DOUBLE CLICK " execute file"



2) When the install starts, you can select the default folder or a specific folder before proceeding with the installation.

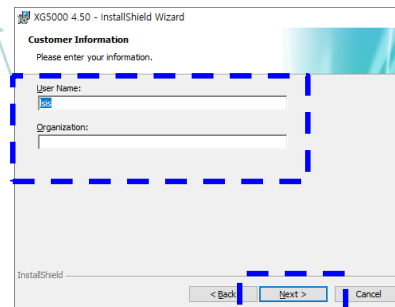


CLICK "Next"

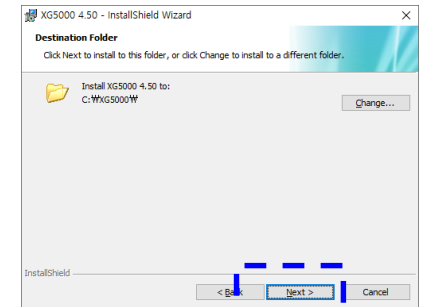


don't  
care

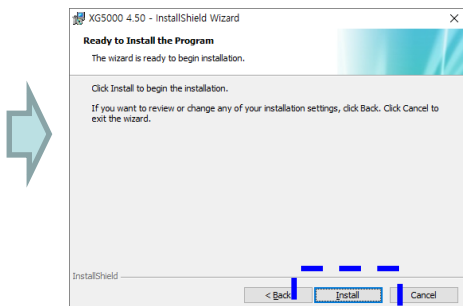
After insert user name and  
org.(don't care) and click " Next"



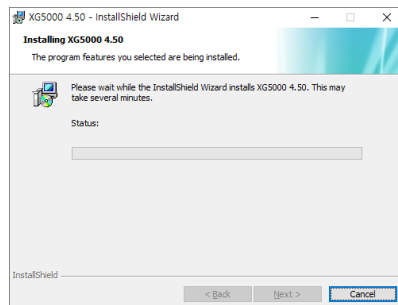
Define " folder"



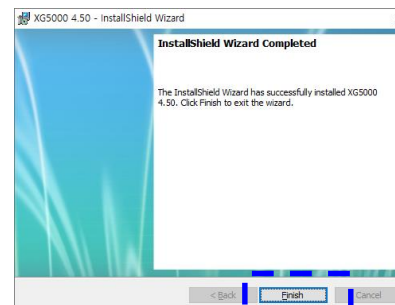
Where install or not



Install processing



Install completion



## 2. GIPAM3000 LOGIC EDIT.

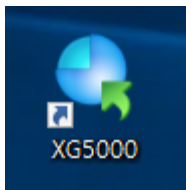
### 1. Open the internal PLC LOGIC of GIPAM3000

\* After XG5000 is installed, the cable (USB 2.0 B TYPE) between the installation PC and the GIPAM3000 device must be connected to edit the internal LOGIC of GIPAM3000.

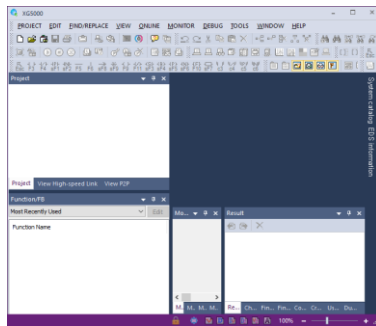
#### STEP1. CABLE Connections Between PC and GIPAM3000

#### STEP2. Run XG5000 installed on your PC.

Double click



Execute XG5000

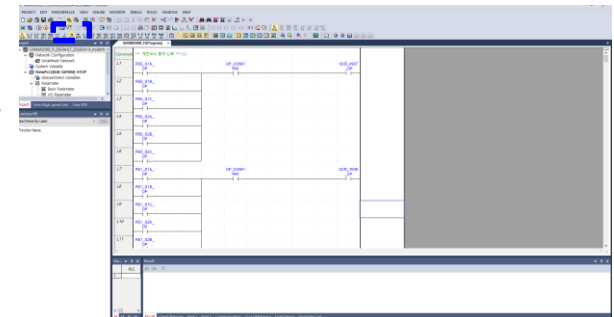
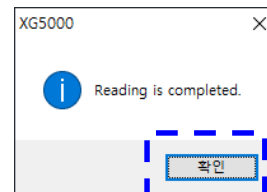
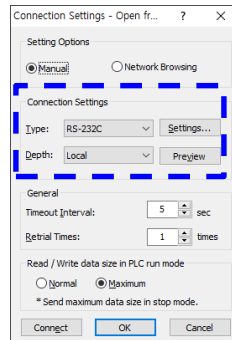
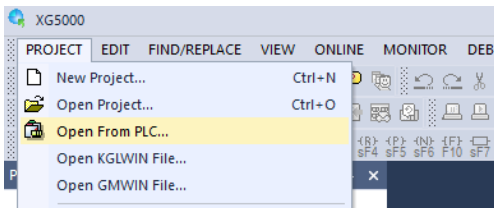


#### STEP3. Import the LOGIC inside the XG5000

Change type **RS232** -> **USB**

And click "OK"

- PROJECT -> OPEN FROM PLC



We can find PLC LOGIC as bellows ( **STOP STATUS** )

## 2. GIPAM3000 LOGIC EDIT

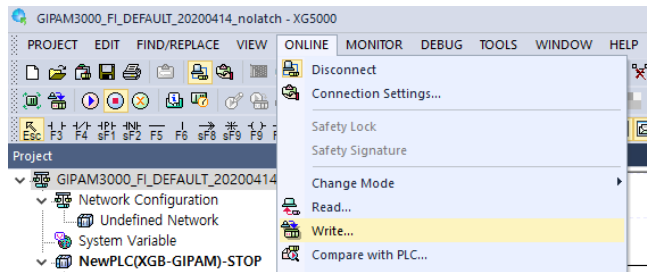
### 2. Write the Modified PLC LOGIC to GIPAM3000

To apply the modified LOGIC to GIPAM3000 after modifying (see XG5000 manual), proceed as follows.

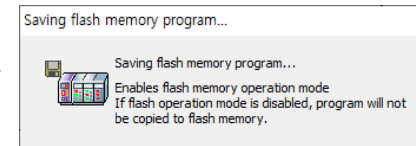
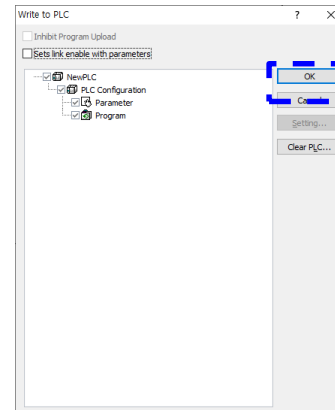
**\* If the DO output is on, DO is turned off during WRITE.**

**(GIPAM3000 internal LOGIC initialized during WRITE.)**

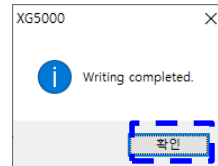
#### STEP1. ONLINE -> WRITE



We can find PLC LOGIC as bellows



COMPLETE



STEP2. You can exit XG5000 after you finish writing the PLC.

## 2. GIPAM3000 LOGIC EDIT

### 4. How to Connect and Monitor XG5000 to GIPAM3000

Methods can be monitored under two conditions as shown below

4.1 When PLC LOGIC is opened from GIPAM3000.

4.2 WRITE after modifying the PLC LOGIC of GIPAM3000

STEP1. MONITOR -> Start Monitoring



Color of side line is changed from green to **blue**

