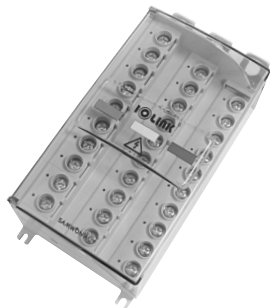


BPD Series Circuit Breaker Directly Connected Type Busbar Type Power Distribution Block

User's Guide



Thank you for purchasing product of SAMWON ACT.
Please check model of product that you purchase first, and read this manual prior to use it.

• Caution for Safety

- ⚠ Caution** Case that results in serious damage in human body or equipment, and fire if user handles this equipment wrongly
- ⚠ Warning** Case that results in slight damage in human body or equipment, and fire if user handles this equipment wrongly

⚠ Caution

1. Do not allow foreign substances such as dust or wire sheath to enter the connection terminals. It may cause damage, fever, and ignition of the main body.
2. When installing or wiring, please cut off the external power supply or circuit breaker first. It may cause electric shock or short circuit accidents.

⚠ Warning

1. Use within the specified temperature range. (-25°C ~ +55°C)
Damage to the outer case may occur.
2. Use within the specified rated voltage and rated current range.
This may result in fire or damage.
3. When wiring, please tighten it with the specified torque using the appropriate tool.
If it is outside of this range torque, it may cause malfunction due to breakage or looseness of tightening surface terminal.

• Model Configuration

Classification	Series
BPD	Busbar Type Power Distribution Block
Classification	Pitch
35	35mm (250A)

BPD 35 - M5 R

Classification	Cable Direction
R	Right
L	Left
Classification	Branch side Terminal Specification
M5	M5 X 10L

• Model Selection

Model	Rated Capacity	Cable Direction	Applicable Frame (LSIS Standard)	Rating (UL 486)	Terminal Screw	Dimensions (W * D mm)	Mounting method
BPD35-M5R	600V 250A	Right	250AF	AGW 22~6	Total 250A or less	105,0	Screw mounting
BPD35-M5L		Left				195,5(226.5) ^(Note)	

(Note) Dimensions in parentheses are the dimensions with bus bar.

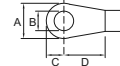
• Rated current for wiring sectional area (UL 486 Table.7)

AWG	16	14	12	10	8	6	4	3	2	1	1/0	2/0	3/0	4/0	250Kcmil
Cross section	1.31	2.08	3.31	5.26	8.37	13.3	21.2	26.7	33.6	42.4	53.5	67.4	85.0	107	127
Rated current	10	15	20	30	50	65	85	100	115	130	150	175	200	230	255

• Characteristics

Dielectric strength	2,500V 1min
Temperature rise	Temperature rise of conductive bracket 45°C or less
Terminal	M5 X 10L
Screw torque	2.2 N · m
Mounting Screw	M4
Ambient temperature	-25°C ~ +55°C (No condensation)

• Applicable crimp terminal



Terminal	A (MIN)	B (MAX)	C (MIN)	D (MIN)
M5	13.0	5.0	9.0	8.7

• Use UL-approved products for crimp terminals.

• Material

Case	Modified PPO
Protective	Polycarbonate
Pin header	Brass / Nickel-Plated

※ The above specifications are subject to change without notice.

※ Please contact HQ or branch office where you purchased product for A/S of this product or technique.

Major products

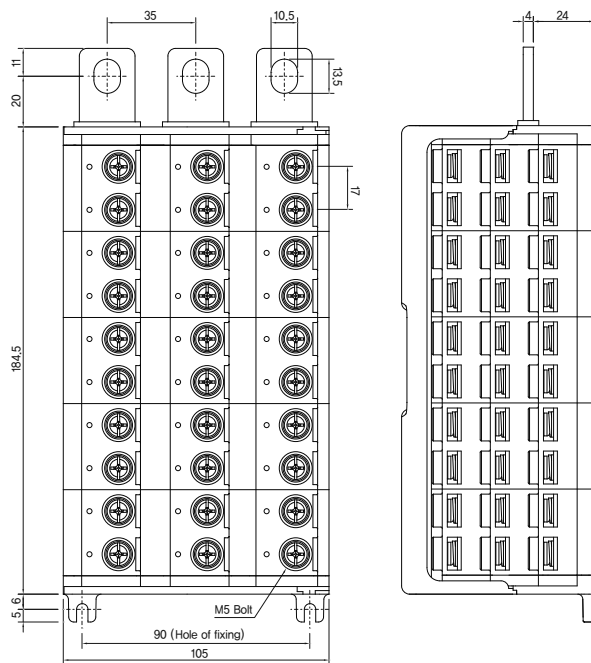
- Relay terminal 1, 2, 4, 6, 8, 16, 32point
- Interface terminal 20, 24, 26, 34, 40, 50, 57, 40 x 2pole
- PLC I/O Connecting cables MITSUBISHI, LSIS, OMRON, FUJII, YOKOGAWA, HITACHI, SIEMENS, AB, etc.
- Servo Connecting cables Encoder cable, Power cable, Motion cable / MITSUBISHI, YASKAWA, OMRON, PANASONIC, LSIS, SAMSUNG, etc.
- Wiring harness / Special cable assembly



삼원ACT(주)
SAMWON ACT Co., Ltd.

■ HQ : 47035, 28, Daedong-ro, Sasang-gu, Busan
TEL : (051)320-7777 FAX : (051)312-2233
■ SEOUL Office : 14353, M Cluster-707, 17, Deogang-ro
104beon-gil, Gwangmyeong-si, Gyeonggi-do
TEL : (02)837-2230 FAX : (02)837-2226

• Dimension
• BPD35-M5R



• BPD35-M5L

