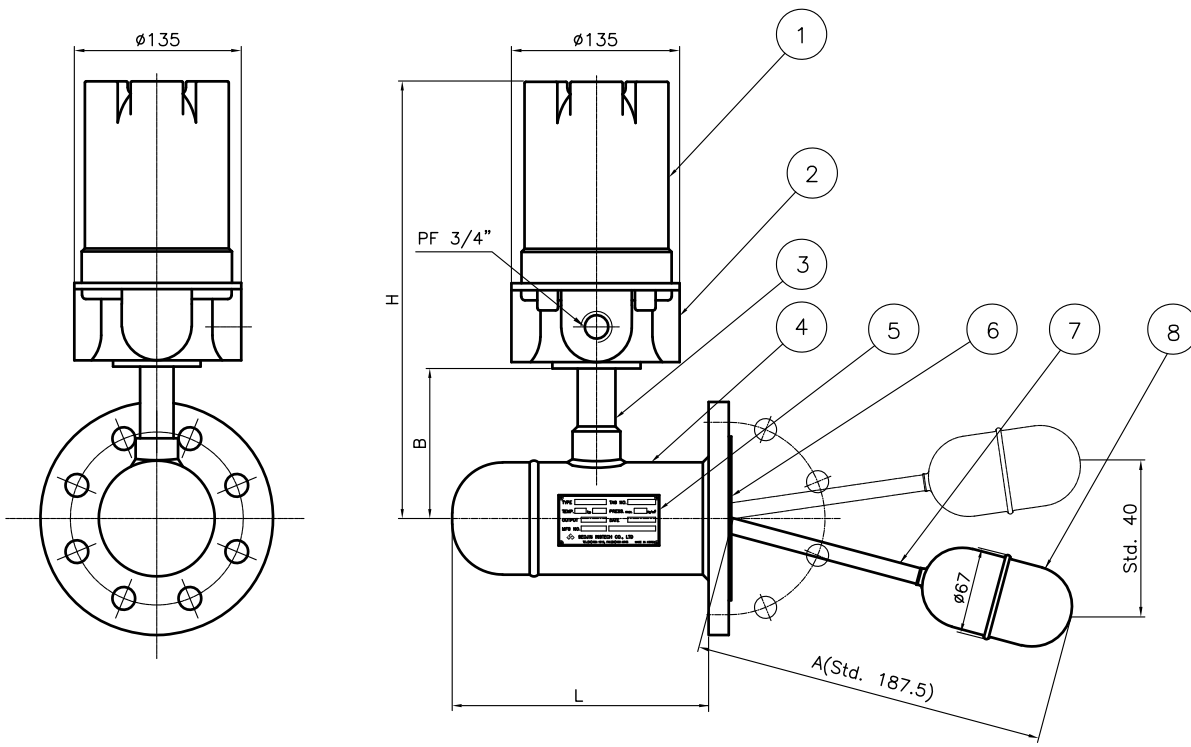
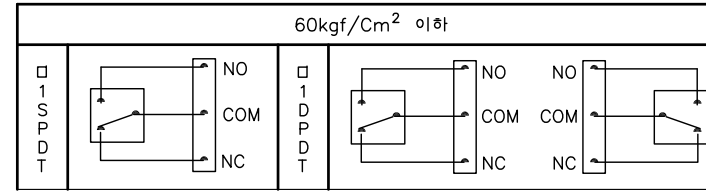


WIRING DIAGRAM



DESIGN DATA

CODE	N/A		
UNIT	mm		
KIND OF FLUID	-		
PRESS.	DESIGN	10(Max.)	Kg/Cm <sup>2</sup>
	OPERATING	-	Kg/Cm <sup>2</sup>
TEMP. (SENSOR)	DESIGN	-25 ~ 150	°C
	OPERATING	-	°C
TEMP. (ELECTRONICS)	DESIGN	-25 ~ 120	°C
	OPERATING	-	°C
CONTACT RATING	250V AC, 10A		
POWER SUPPLY	-		
ENCLOSURE	EXPLOSION PROOF Ex d IIC T6 / IP65		
SP.GR	0.6(Min.)		
OUTPUT	1SPDT		
VISCOSITY	1Pa.s/10P Less		
MOISTURE	Max 80%RH		
FLANGE			

NOTES

REVISION

8	FLOAT ASS'Y		1		
7	FLOAT PIPE		1		
6	FLANGE		1		
5	NAME PLATE	AL	1		
4	BODY ASS'Y		1		
3	CONNECTION PIPE "A"		1		
2	HOUSING	ADC12	1		
1	HOUSING COVER	AC2B	1		

NO	DESCRIPTION	MATERIAL	Q'TY	SPECIFICATION	REMARK
----	-------------	----------	------	---------------	--------

BILL OF MATERIAL

CUSTOMER	-
----------	---

PROJECT	-
---------	---

TITLE	MAGNETIC FLOAT TYPE LEVEL SWITCH SHM-2000 ASSEMBLY DRAWING
-------	--

MANUFACTURER	SeoJin Instech Co., Ltd.
--------------	--------------------------

SCALE	1:1
-------	-----

ERP CODE	0000
----------	------

Work Order No.	-
----------------	---

REV.	△
------	---

DWG NO.	SJ-M012-DWG-AP001
---------	-------------------

△					
△					
△					
△					
△					
△	FOR APPROVAL	2020.12.08	S.J.I.	D.N.	S.H.L.
REV.	DESCRIPTION	DATE	DESIGNED	CHECKED	APPROVED