

SAFETY THERMOSTATS

series
TS

Protection	Gas	Zone	1-2	II2G	Ex db IIB+H ₂ T ₆ ÷T ₅ Gb
	Dusts		21-22	II2D	Ex tb IIIC T ₈₅ °C÷T ₁₀₀ °C Db

Degree of Protection	IP65
----------------------	------

Amb. Temp.	Standard	-20°C	+40°C
	Extended	-50°C	+60°C



Entries Threading	NPT ANSI B1.20
-------------------	----------------

Material	Aluminum light alloy
----------	----------------------

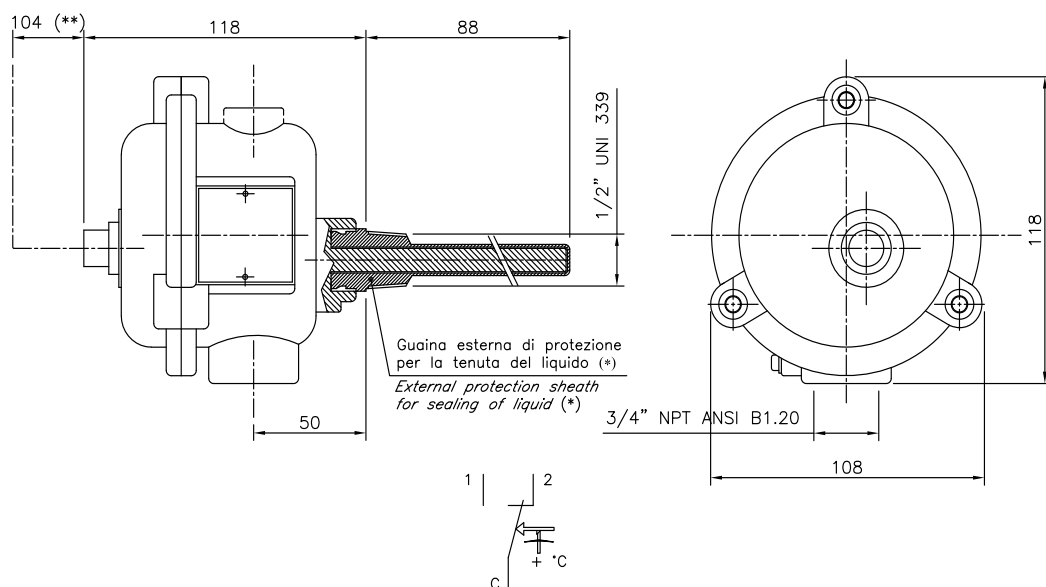
Painting	External Epoxy RAL 7000
----------	-------------------------

Standards and Certificates	Directive 2014/34/EU (ATEX)
	EN 60079-0 • EN 60079-1 EN 60079-31
	CE INERIS 13 ATEX 0039X
	IEC 60079-0 • IEC 60079-1 IEC 60079-31
	IECEx INE 13.0053X

- Thermostat with liquid expansion probe with manual reset and positive safety for capillary breakup.
- Especially suitable for boilers, heating systems and in all applications where it is necessary not to exceed the maximum temperature set.
- Its design allows the rapid replacement of the control unit without having to empty the process fluid containers.
- External sheath in AISI 316L Stainless Steel.
- Plate and external screws in Stainless Steel.

- Options**
- Cable entry: cylindrical threading M25x1,5 (M).
 - Thermostat with automatic reset.

- Control temperature range other than standard.



NOTES

It is recommended to read the installation and maintenance instructions.

The temperature probe is protected by an internal explosionproof sheath as well as by an external watertight sheath which induces a greater thermal inertia of the thermostat that raises the temperature reading of the controlled fluid. It's advisable to carry out tests on the adjustments to minimize this effect.

The Temperature Class T₆/T₈₅°C takes into account an Ambient Temperature (A.T.) up to +40 °C, the Temperature class T₅/T₁₀₀°C an extended A.T. up to +60°C.

(**) Minimum space in mm to remove the case without removing the sheath.

Code	Control Temperature (°C)	Max Bulb Temperature (°C)	Differential ΔT (°C)
TS 100	100°C ^{+0°C} _{-6°C}	125°C	15°C±8°C

Example: TS 100N

Order Coding

Type
TS = safety thermostat

Control Temperature
100 = 100°C

Threading
N = NPT (N)
M = metric (M)