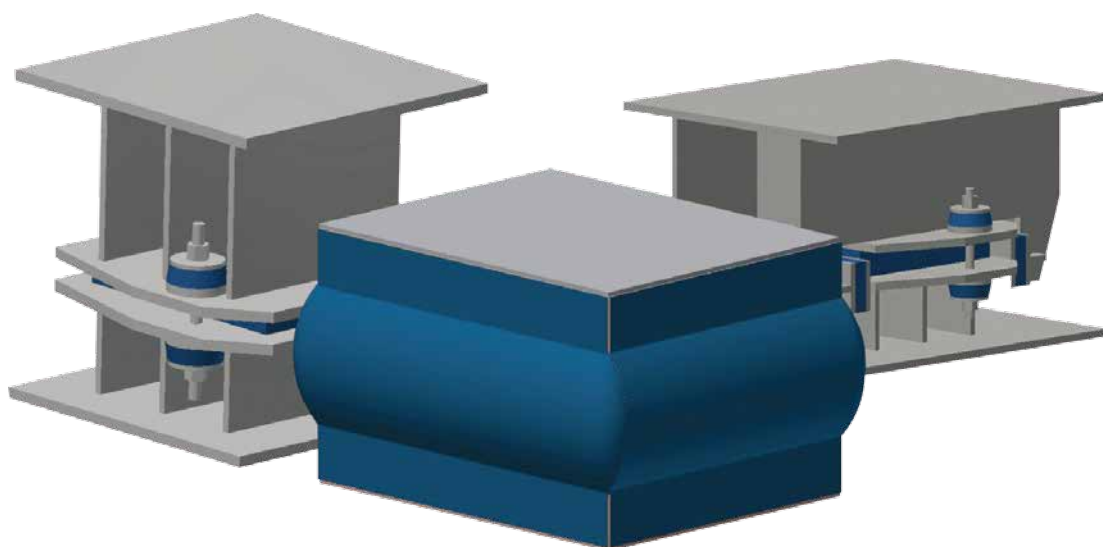




Remitite EB-153

Elastomeric Bearing



www.remitite.com

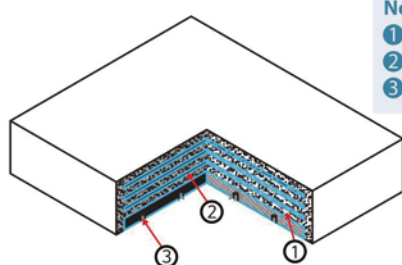
Remitite EB-153

Remitite Elastomeric Bearing

Elastomeric Bearing EB-153 is designed and produced in accordance with the European Standard En 1337-3 as a laminated elastomer consisting of uniquely bonded rubber and shim plates.

EB-153 offers infrastructure shock-absorption and reduction of excessive horizontal forces. It supports weight bearing and verticality movement on super structure in onshore or offshore installations.

EB-153 is covered with J-90 and H-120 class certified EDT-629 material to protect the elastomeric bearing from damage in the event of fire even with temperatures exceeding 1,000°C.



Note
 ① Neoprene shore(Hs A)
 ② Steel
 ③ Tap

Applications

- Effectively respond to any structure because it is rotatable and flexible in all directions.
- Fatigue resistance against cyclic loads is much greater than monolithic metal.

Characteristic

- Laminated structures made of thin rubber and steel sheets.
- Excellent seating capacity, shearing deformation resistance and effective seismic isolator.
- Easy to install, maintain and economical with excellent durability facilitating long term installations.

Bearing Type

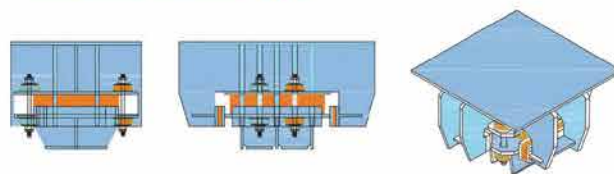
Remi Elastomeric Bearing uses high performance fireproof materials, and is type-classified by the intended direction of movement.

Type

EB-153 has three types of bearing based on directions of movement.

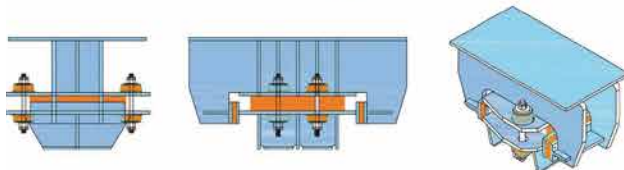
Fixed Structural Type

Effective as a "stopper structure" to restrict both acceleration and direction in a perpendicular bridge.



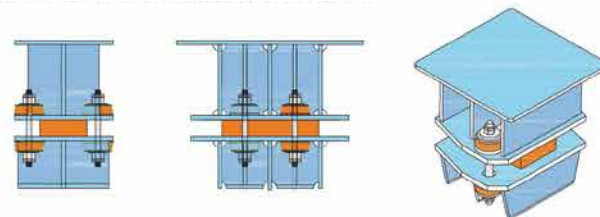
Restraint Structural Type

Restricts acceleration movement and direction in a perpendicular bridge.



Free Structural Type

Movement configurable in any direction desired.



Main Office & Plants

109-30 Yongdeok-ro, 23 Beon-gil, Hallim-myeon, Gimhae-si, Gyeongsangnam-do 50853 Korea
 Tel: +82-55-336-9273/4 Fax: +82-55-336-9275 E-mail: ask@remitite.com



ISO 9001 / ISO 14001 / OHSAS 18001
 Certificated Company

America Office

26818 Lindenwood Creek Lane, Katy, TX
 77494 USA

Singapore Office

12 Hoy Fatt Road #06-01 Singapore 159506