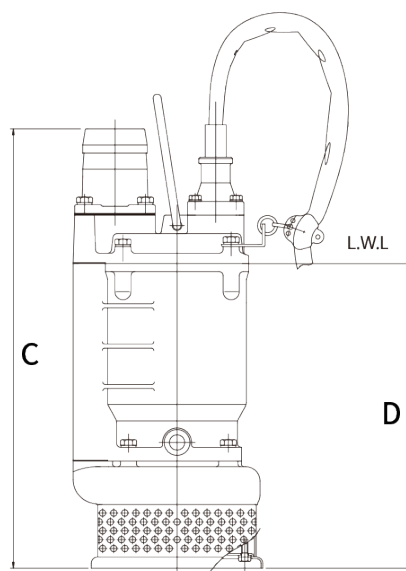
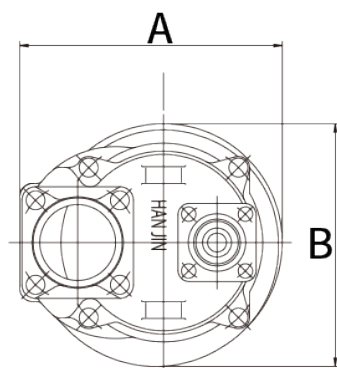


HTV Submersible drainage pump for civil engineering site



APPLICATIONS

- Dewatering water at civil works
- Construction sites of water and wastewater system

- Subway
- Tunnel
- Water supply

ø	MODEL	OUTPUT HEAD (kW)	FLOW (m) (m3/min)	WEIGHT (kg)	DIMENSION(cm)			D (Min. water level) (cm)	
					A	B	C		
50	50HTV0.8-2T	0.75	12	0.14	35	19	18	44	30
	50HTV1.5-2T	1.5	16.5	0.22	49	25	20	50	35
	50HTV2.2-2T	2.2	20	0.27	54	25	20	52.5	35
80	80HTV3.7-2T	3.7	30	0.18	78	29.5	24.5	64.5	41
	80HTV1.5-2T	1.5	8	0.45	49	26.5	20	51.5	35
	80HTV2.2-2T	2.2	10	0.54	54	26.5	20	54	35
	80HTV3.7-2T	3.7	20	0.45	78	31	24.5	65	50
	80HTV5.5-2T	5.5	25	0.54	85	31	25.5	67.5	50

ø	MODEL	OUTPUT HEAD (kW)	FLOW (m) (m3/min)	WEIGHT (kg)	DIMENSION(cm)			D (Min. water level) (cm)	
					A	B	C		
100	100HTV3.7-2T	3.7	10	0.9	78	32.5	24.5	65.5	50
	100HTV5.5-2T	5.5	15	0.9	85	32.5	25.5	69	50
	100HTV7.5-2T	7.5	30	0.7	128	35	30.5	83	57
	100HTV11-2T	11	35	0.9	171	37	32	87.5	60
150	100HTV15-2T	15	40	1.0	177	37	32	87.5	60
	150HTV7.5-2T	7.5	15	1.4	132	38.5	30.5	88	57
	150HTV11-2T	11	20	1.5	173	40.5	32	92.5	60
	150HTV15-2T	15	20	2.2	182	40.5	32	92.5	60

DESCRIPTION			
LIQUID	TYPE	- Fresh water	
		- Wastewater	
	Temp.(°C)	Max.40	
PUMP	CONSTRUCTION	Impeller	- Opened type
		Shaft sealing	Double mechanical seal
		Bearing	63xx ZZ
		Impeller	GCD 450
		Casing	GC 200
MATERIAL		Suction cover	GCD 450
		Mechanical seal	SIC & Ceramic
		Shaft	STS 410
		Motor frame	GC 200

	TYPE	Dry
	POLE	2
	INSULATION	E, B, F
	PHASE	3
	FREQUENCY(Hz)	50, 60
MOTOR	VOLTAGE(V)	220, 380, 440, 460
	POWER(kw)	0.75~15
		- DOL
	STARTING METHOD	- Y-Δ
	LUBRICANT	ISO VG46
MATERIAL	FRAME	GC 200
	POWER CABLE	2 PNCT
DISCHARGE	All except automatic discharge connection	