

## ■ SVP Series Variable Displacement Vane Pumps

### ● STABLE FLOW

Due to use new design "Pressure Balance Mechanism" the outlet flow pressure control systems, the output flow is very stable even in the high pressure ranges.

### ● ENERGY SAVING TYPE

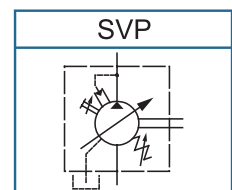
Power loss has been reduced further by application of our highly advanced precision machining technology to assure the same high efficiency performance.

### ● NO VIBRATION AND QUIET

The cam-ring is specifically designed to have a special curve so the noise level dB is very low, even in the high pressure operations.



Graphic Symbol



## ■ Specification

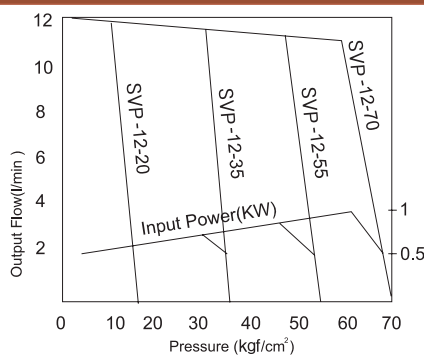
Model Code	Max. Pressure MPa(bar)	Max. Flow rate L/min	Mass kg
SVP-12	7 (70)	12	4.8
SVP-20		20	5.2
SVP-30		30	9.0
SVP-40		40	9.0

## ■ Model Code (Single)

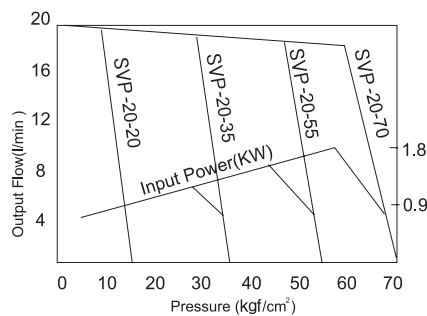
SVP Series Code	-12 Outlet Flow (L/min)	-70 Pres. Adjust Range	-10 Design No.
SVP	12	20 : 8 ~ 20bar	10
	20	35 : 15 ~ 35bar	
	30	55 : 30 ~ 55bar	
	40	70 : 50 ~ 70bar	

## ■ Specification Curve

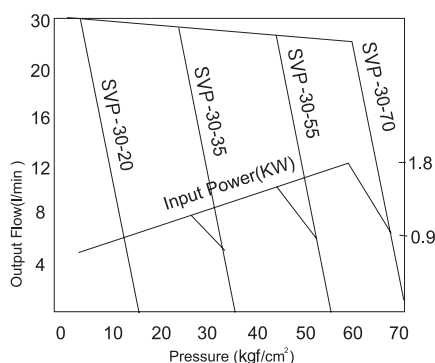
SVP-12



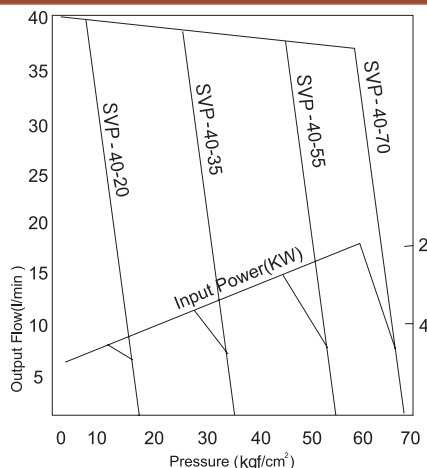
SVP-20



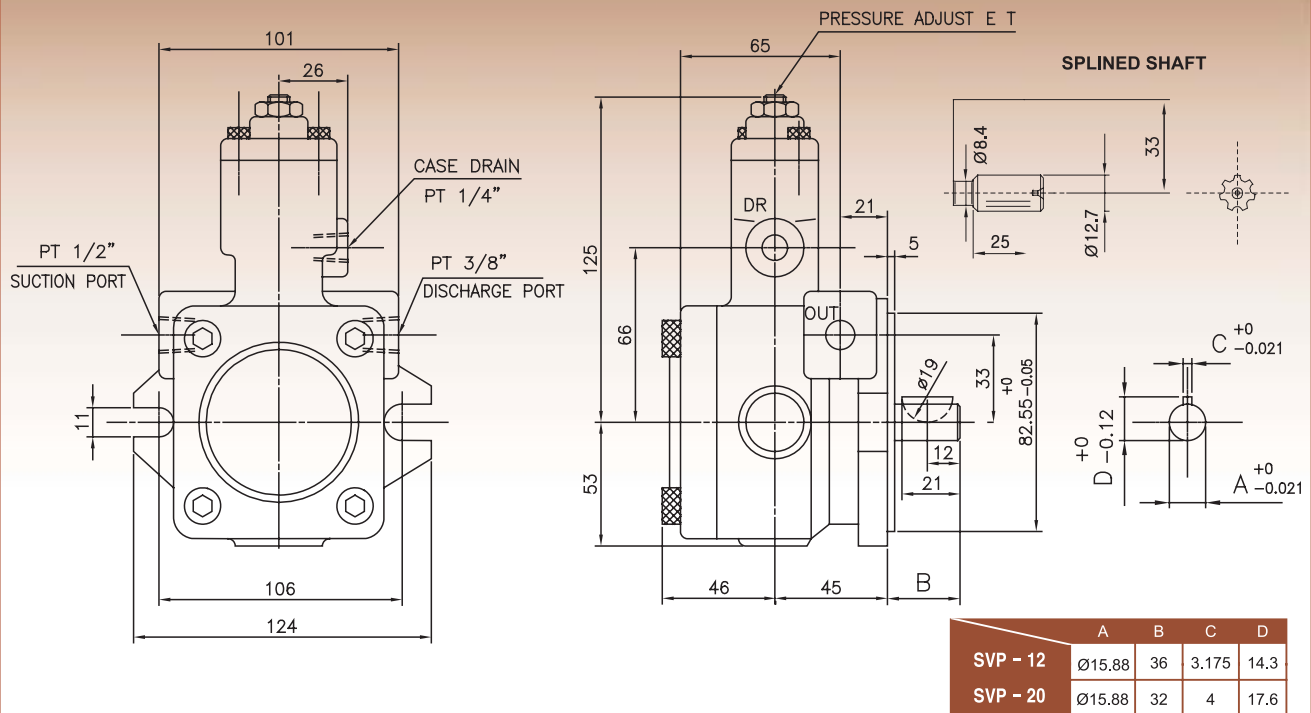
SVP-30



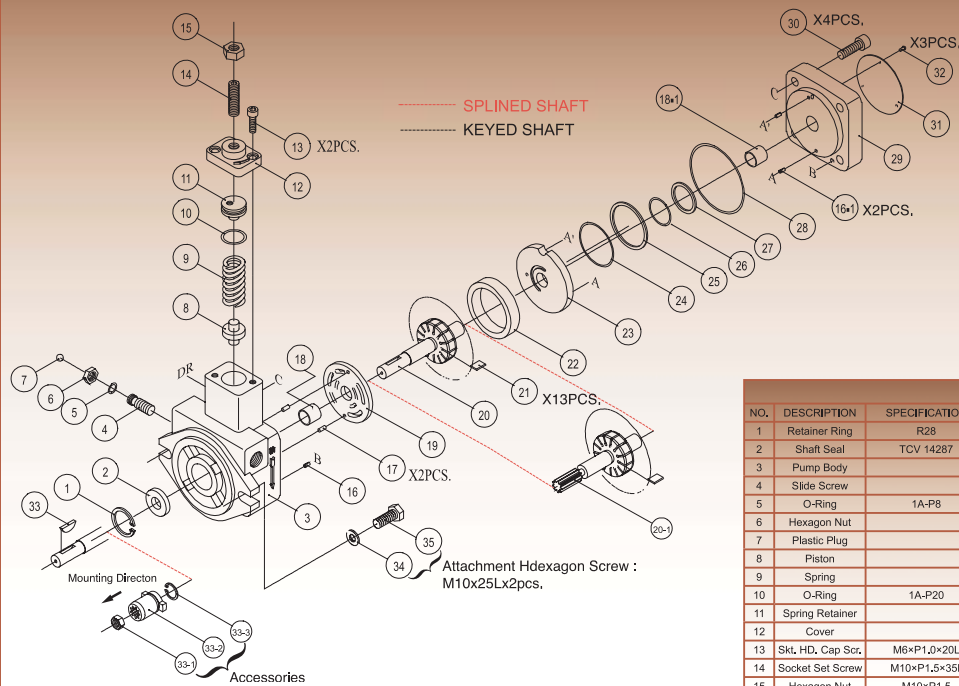
SVP-40



## SVP - 12, 20

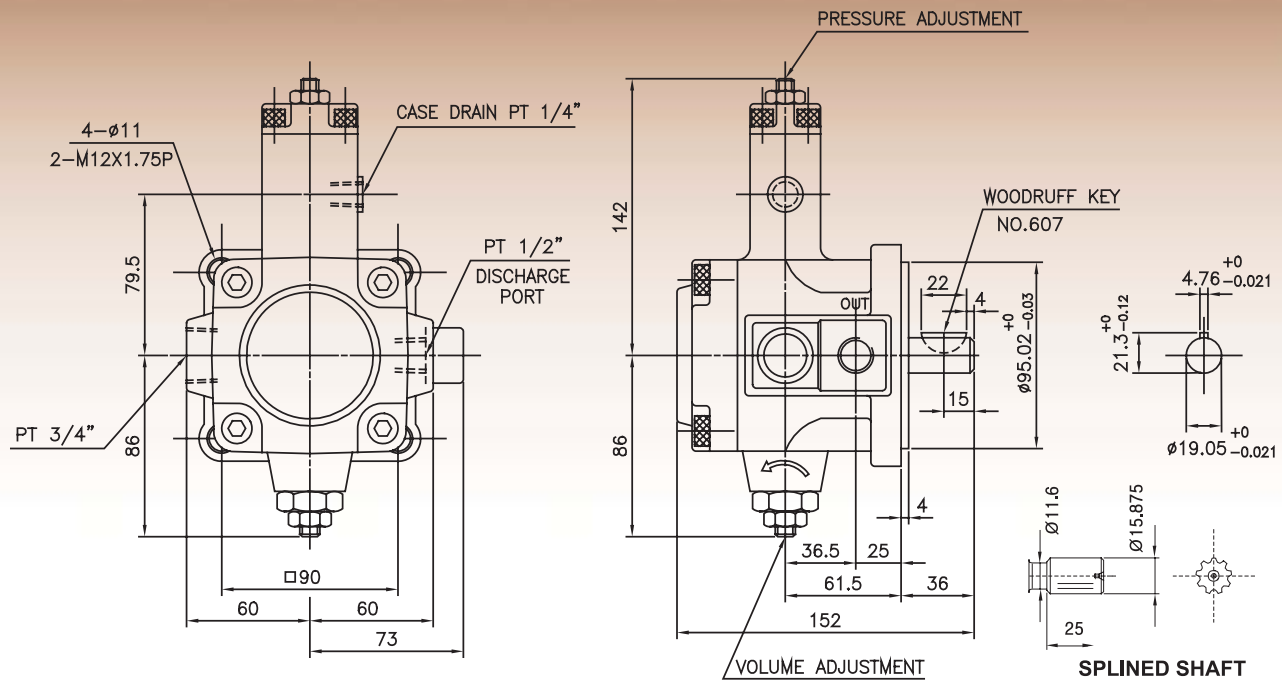


## ASSEMBLY & PARTS LIST

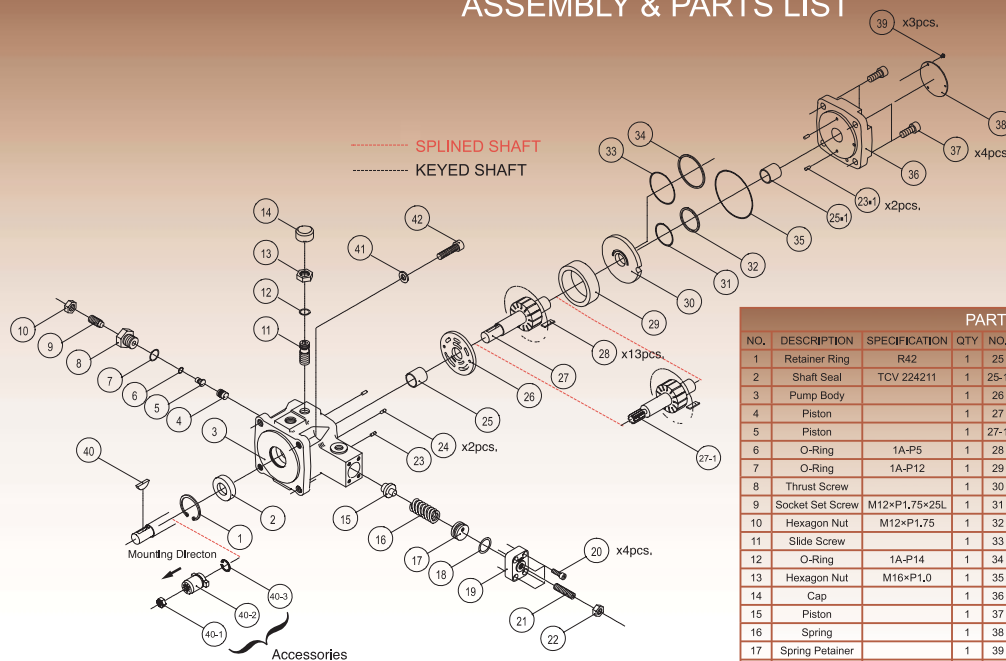


PARTS LIST								
NO.	DESCRIPTION	SPECIFICATION	QTY	NO.	DESCRIPTION	SPECIFICATION	QTY	
1	Retainer Ring	R28	1	20	Rotorshaft		1	
2	Shaft Seal	TCV 14287	1	21	Vaness		13	
3	Pump Body		1	22	Cam Ring		1	
4	Slide Screw		1	23	Thrust Plate		1	
5	O-Ring	1A-P8	1	24	O-Ring	AS568-031	1	
6	Hexagon Nut		1	25	Endless Back-up Ring		1	
7	Plastic Plug		1	26	O-Ring	AS568-023	1	
8	Piston		1	27	Endless Back-up Ring	Keyed Shaft	1	
9	Spring		1	27-1	Endless Back-up Ring	Spined Shaft	1	
10	O-Ring	1A-P20	1	28	O-Ring	1A-S71	1	
11	Spring Retainer		1	29	Cover		1	
12	Cover		1	30	Skt. HD. cap Scr.	M8×P1.25×30L	4	
13	Skt. HD. Cap Scr.	M6×P1.0×20L	2	31	Name Plate		1	
14	Socket Set Screw	M10×P1.5×35L	1	32	Fixing Screw		3	
15	Hexagon Nut	M10×P1.5	1	33	Woodruff Key	NQ.406	1	
16	Spring Pin	ø3 8	1	33-1	Hexagon Nut	M10 X P1.2	1	
16-1	Spring Pin	ø3 8	2	33-2	Coupling		1	
17	Straight Pin	ø3 8	2	33-3	Retainer Ring		1	
18	Engine Bush	DIADO(JAPAN)DD1415	1	34	Washer	M10	2	
18-1	Engine Bush	DIADO(JAPAN)DD1415	1	35	Hexagon Screw	M10×P1.5×25L	2	
19	Port Plate		1	※ 33-1~35 are Accessories.				

## SVP - 30, 40



## ASSEMBLY & PARTS LIST



### PARTS LIST

NO.	DESCRIPTION	SPECIFICATION	QTY	NO.	DESCRIPTION	SPECIFICATION	QTY
1	Retainer Ring	R42	1	25	Engine Bush	DIADO(JAPAN)DD2225	1
2	Shaft Seal	TCV 224211	1	25-1	Engine Bush	DIADO(JAPAN)DD2225	1
3	Pump Body		1	26	Port Plate		1
4	Piston		1	27	Rotorshaft	Keyed Shaft	1
5	Piston		1	27-1	Port Plate	Splined Shaft	1
6	O-Ring	1A-P5	1	28	Vanes		13
7	O-Ring	1A-P12	1	29	Cam Ring		1
8	Thrust Screw		1	30	Thrust Plate		1
9	Socket Set Screw	M12×P1.75×25L	1	31	O-Ring	AS568-030	1
10	Hexagon Nut	M12×P1.75	1	32	Endless Back-up Ring		1
11	Slide Screw		1	33	O-Ring	AS568-035	1
12	O-Ring	1A-P14	1	34	Endless Back-up Ring		1
13	Hexagon Nut	M16×P1.0	1	35	O-Ring	1A-S85	1
14	Cap		1	36	Cover		1
15	Piston		1	37	Skt. HD. cap Scr.	M10×P1.5×25L	4
16	Spring		1	38	Name Plate		1
17	Spring Retainer		1	39	Fixing Screw		3
18	O-Ring	1A-P22A	1	40	Woodruff Key	NO.608	1
19	Cover		1	40-1	Hexagon Nut	M10 X P1.5	
20	Skt. HD. Cap Scr.	M6×P1.0×20L	4	40-2	Coupling		
21	Socket Set Screw	M10×P1.5×35L	1	40-3	Retainer Ring	R24	4
22	Hexagon Nut	M10×P1.5	1	41	Spring Washer	M10	4
23	Spring Pin	ø4×10	1	42	Skt. HD. cap Scr.	M10×P1.5×30L	4
23-1	Spring Pin	ø4×10	2				
24	Spring Pin	ø4×10	2				

※ 40-1~42 are Accessories.