

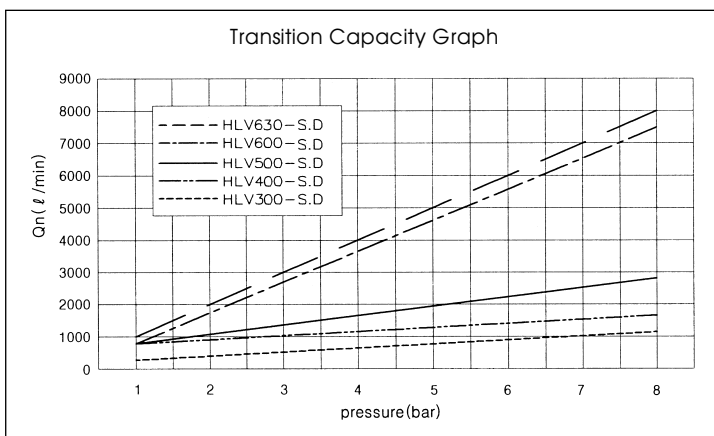
HLV Series

Hand Lever Operated
Spool Valves

- Direct Operation Type
- 5/2, 5/3, 3/2
- 1/8, 1/4, 3/8, 1/2
- High Flow Capacity

SPECIFICATION

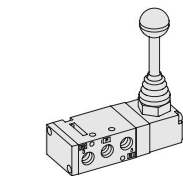
ITEM	FUNCTION	HLV300	HLV400	HLV500	HLV600
			5/2, 5/3-Way	5/2, 5/3, 3/2-Way	
Fluids	Compressed Air & Inert Gases				
Port Size		1/8	1/4	3/8	1/2
Pressure(bar)	0~8.0				
Eff. Sectional Area(mm ²)-5bar		13.5	18.0	35.0	90.0
Ambient & Fluid Temp.	5~60°C (41~140°F)				
Lubrication	Not Required(Use ISO VG32#)				



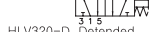
The Material of Parts

- Valve Body : Die-Cast Aluminium
- Spool : Aluminium
- Seals : NBR
- Spring : Stainless
- Lever Parts : Steel, NBR, Plastic

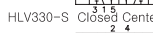
* The specification on each item can be amended without any prenotice to improve a performance.
* The specification on each item can be different from actual specification.



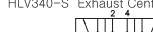
HLV310-S Single Detented



HLV320-D Detented



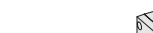
HLV330-S Closed Center



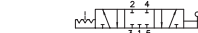
HLV340-S Exhaust Center



HLV350-S Pressure Center



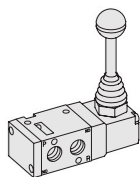
HLV330-D Closed Center



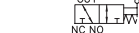
HLV340-D Exhaust Center



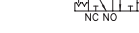
HLV350-D Pressure Center



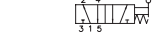
HLV460-S Single OUT



HLV460-D Detented OUT



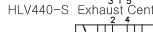
HLV410-S Single



HLV420-D Detented



HLV430-S Closed Center



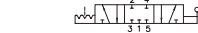
HLV440-S Exhaust Center



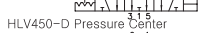
HLV450-S Pressure Center



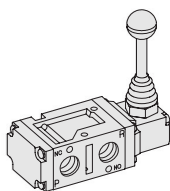
HLV430-D Closed Center



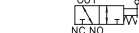
HLV440-D Exhaust Center



HLV450-D Pressure Center



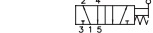
HLV560-S Single OUT



HLV560-D Detented OUT



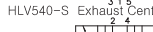
HLV510-S Single



HLV520-D Detented



HLV530-S Closed Center



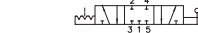
HLV540-S Exhaust Center



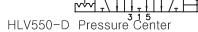
HLV550-S Pressure Center



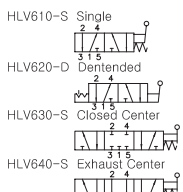
HLV530-D Closed Center



HLV540-D Exhaust Center



HLV550-D Pressure Center



HLV610-S Single



HLV620-D Detented



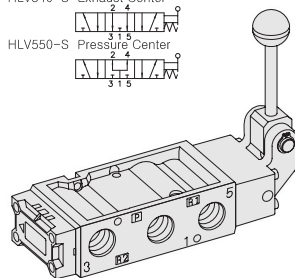
HLV630-S Closed Center



HLV640-S Exhaust Center



HLV650-S Pressure Center



HLV630-D Closed Center



HLV640-D Exhaust Center



HLV650-D Pressure Center



ORDERING NO.

HLV3 1 0 - S

Valve Series

HLV3 :
1/8-Port Body
HLV4 :
1/4-Port Body
HLV5 :
3/8-Port Body
HLV6 :
1/2-Port Body

Function

1	5/2 Single
2	5/2 Double
3	5/3 Closed Center
4	5/3 Open Center
5	5/3 Pressure Center
6	3/2 Normally Closed

Port Size & Thread

0	G
1	NPT

Return Method

S	Single Spring Return
D	Double Detented

