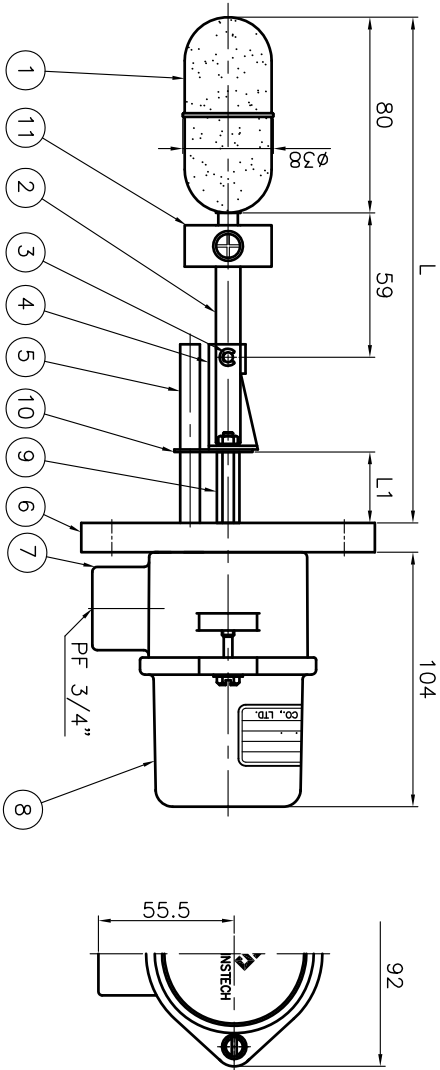


WIRING DIAGRAM



DESIGN DATA

CODE	N/A		
UNIT	mm		
KIND OF FLUID	DESIGN	-	
	OPERATING	5(Max.)	kg/Cm ²
PRESS.	DESIGN	-	kg/Cm ²
	OPERATING	-10 ~ 120	°C
TEMP. (SENSOR)	DESIGN	-	°C
	OPERATING	-10 ~ 120	°C
TEMP. (ELECTRONICS)	DESIGN	-	°C
	OPERATING	-	°C
CONTACT RATING	250V AC, 0.5A		
POWER SUPPLY	-		
ENCLOSURE	WEATHER PROOF		
SP.GR	0.65(Min.)		
OUTPUT	<input type="checkbox"/> 1 SPST	<input type="checkbox"/>	
	<input type="checkbox"/> 1 SPDT	<input type="checkbox"/>	
VISCOSITY	1Pa.s/10P Less		
MOISTURE	Max 80%RH		
TAG NO.	-	-	L1= L-178

NOTES

REVISION

11	BALANCE WEIGHT	304SS	1	
10	PLATE	304SS	1	
9	SPACER BOLT	304SS	2	
8	COVER	ADC 12	1	
7	HOUSING	ADC 12	1	
6	FLANGE	304SS	1	
5	STEM	304SS	1	
4	SUPPORT	304SS	1	
3	PIN	304SS	1	
2	SHAFT	304SS	1	
1	FLOAT	304SS	1	
NO	DESCRIPTION	MATERIAL	QTY	SPECIFICATION
				REMARK

BILL OF MATERIAL

CUSTOMER		-
PROJECT		-
TITLE		Magnetic Float Type Level Switch SFM-16-A-1-A-1-A-1 APPROVAL DRAWING
MANUFACTURER		Seojin Instech Co., Ltd.
SCALE	1:1	REV. 0000
DATE	2024.01.10	REV. 0000
NO.	1	REV. 0000
REV.	0000	REV. 0000