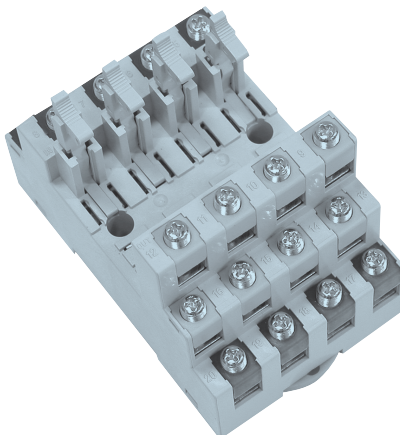


R4W-DC24VC Hybrid 4points Relay Terminal Socket

User's Guide



Thank you for purchasing product of SAMWON ACT.
Please check model of product that you purchase first, and read this manual prior to use it.

● Caution for Safety

⚠ Caution Case that results in serious damage in human body or equipment, and fire if user handles this equipment wrongly

⚠ Warning Case that results in slight damage in human body or equipment, and fire if user handles this equipment wrongly

⚠ Caution

1. Do Not use other voltage except appointed voltage. It may be the cause of fire or damage of equipment.
2. Use it within nominal voltage and current which are marked on load.
It may be the cause of fire or damage of equipment.
3. Check COMMON polarity of using controller (PLC, etc) first, and then select proper product.
It may be the cause of fire or damage of this equipment and user's.
4. Please make sure to check the internal wiring diagram of the relay board and the arrangement of the controller PIN (terminal) when wiring the relay board between the controller (PLC etc.).
It may be the cause of malfunction or damage of this equipment and user's.

※ The connection cable for PLC of various makers is provided by us. Please refer to the catalogue or contact Head or branch office if you need more detail models and specifications.

⚠ Warning

1. Terminal wiring of power line and connector for signal after making sure to shut off power so as that it is prevented to be damaged or malfunctioned.
2. Read this user's guide which is attached to product, and check product's performance, specification, operation pattern, signal, and how to handle prior to use. Keep user's guide please.
3. When wiring the terminal block, please tighten it with the specified torque using the appropriate tool.
If it is outside of this range torque, it may cause malfunction due to breakage or looseness of tightening surface terminal.

● Model Selection

Model	IO Point(s)	Coil Rated voltage	Common		Interface		Dimensions (W×Dmm)	Mounting method
			Coil	Contact	Coil	Contact		
R4W-DC24VC	4Point (1c×4)	24V DC	Individual Power (4P Short bar built)	Individual Com. (4P Short bar built)	Screw Terminal 13.5mm Pitch		55×87.2	Screw mounting/ DIN Rail (Channel)

● Applicable Relay

Division	MODEL	Input voltage	Nominal switching capacity	Reference
Noncontact PhotoMOS Relay	CM-Z202D	5~30VDC	Below 2.7A 60V	Noncontact relay
Noncontact Solid State Relay	CM-G22124	19.2~28.8VDC	2.0A 75~264V AC	
Machinery Contact Relay	AHN12024	24VDC	10A 250V AC 10A 30V DC	High capacity relay terminal
	G2R-1-S DC24V	24VDC		

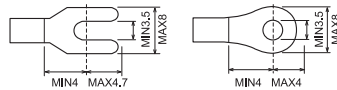
● Rating/Specification

Rated current	10A
Dielectric voltage between terminals	AC2,000V 60Hz / 1min
Insulation resistance	1000MΩ (500V)
Coil surge suppression device	Diode 1A / 700V
Cross connection protecting device	Diode 1A / 700V
Applicable wire	AWG22~16 (MAX / 1.5mm ²)
Terminal Screw	M3.5 × 10L
Screw torque	7~8Kgf · cm (0.68~0.78 N · m)
Ambient temperature	-10℃ ~ +50℃ (No condensation)

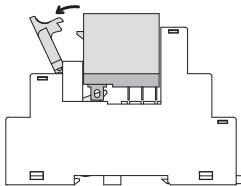
● Material

Case	Modified PPO	
P.C.B	Coil	Epoxy 1.6t
Pin header	Contact	C2680 t0.8 / C2100 t0.3

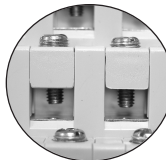
● Applicable crimp terminal



● How to replace relay



● How to use ring crimp terminal



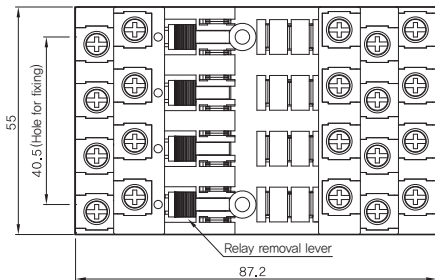
- When the terminal is released, the bolt is coming up by tap of terminal cover. It's Self-up structure.

● Accessories

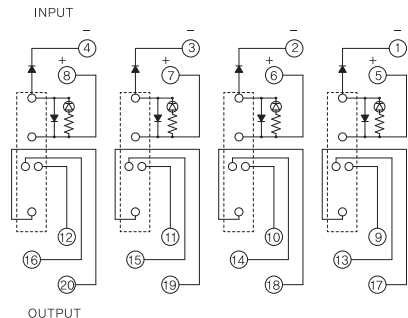
- 4Pole Short bar (4ea)



● Dimension



● Diagram



※ The above specifications are subject to change without notice.

※ Please contact HQ or branch office where you purchased product for A/S of this product or technique.