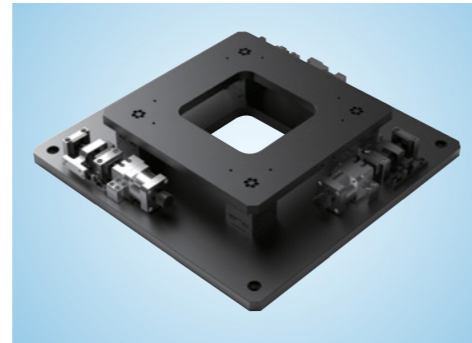
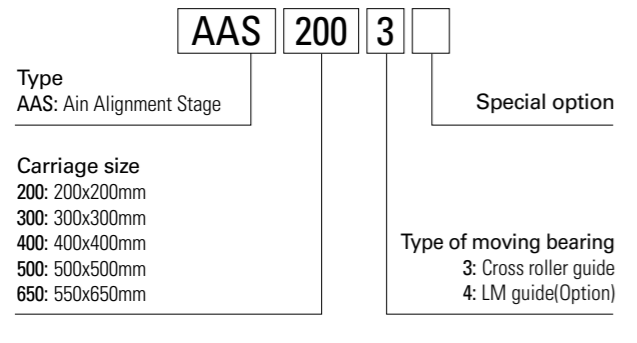


AAS-200 / AAS-300 type

• Examples of model number formation

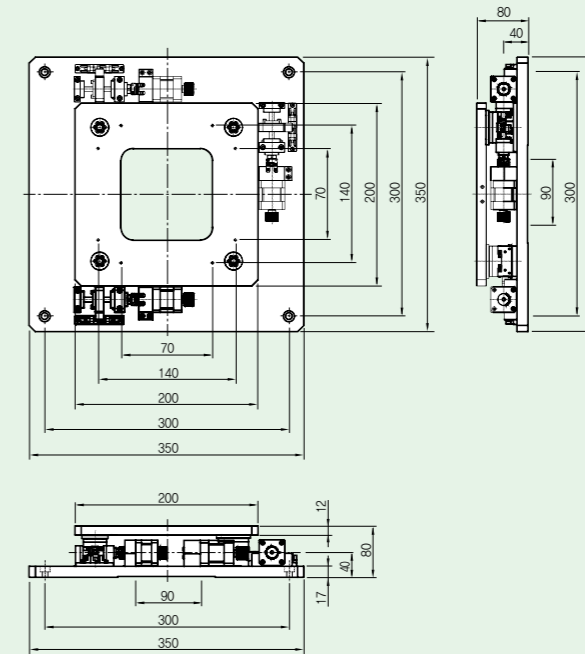


| Specification | Model no. | AAS-200 | AAS-300 |
|----------------------------------|-----------|---|------------------------|
| Table dimension (mm) | | 200x200 | 300x300 |
| Travel range (mm) ⁽¹⁾ | | ±5/±5/±2.5° | ±5/±5/±2.5° |
| Travel guide | | Ballscrew ø8, Lead1, Cross roller guide | |
| Resolution (mm) | | 0.002/Pulse(Full step) | 0.004/Pulse(Full step) |
| Max. speed | | 20mm/sec[5kHz] | |
| Accuracy | | 5µm | 5µm |
| Uni-repeatability | | ±1µm | ±1.5µm |
| Bi-repeatability | | ±2µm | ±3µm |
| Flatness (mm) | | 0.03 | 0.03 |
| Running parallelism (mm) | | 0.02 | 0.02 |
| Straightness (mm) | | 0.01 | 0.01 |
| Load capacity (kg) | | 30 | 50 |
| Material | | Aluminum(Option. SUS) | |
| Weight (kg) | | 15 | 20 |
| Motor model | | PK-545-NB(5P STEP) | |
| Drive model | | DFC5107-P(DC 24V) | |
| Sensor | | 1 Home sensor, 2 Limit sensor | |

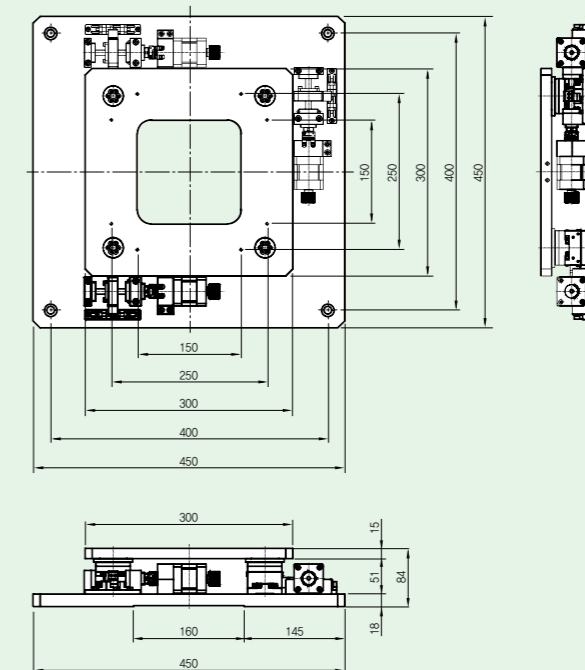
Note (1) Travel range of the rotation angle in the same direction when rotating the value applied.

(2) All products can be changed by customer order. please contact AIN for details.

■ AAS-200

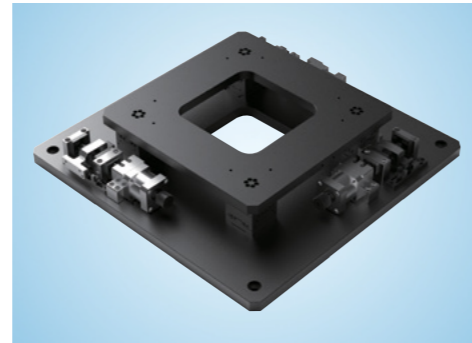
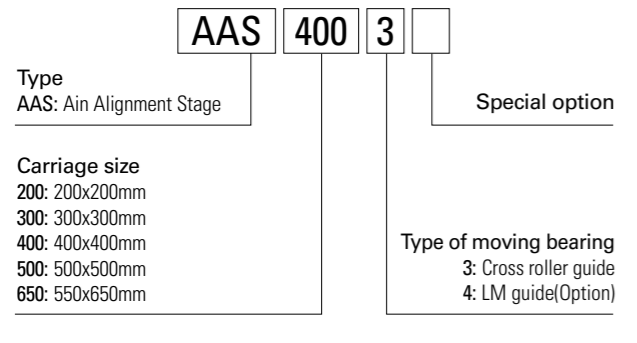


■ AAS-300



AAS-400 / AAS-500 type

• Examples of model number formation

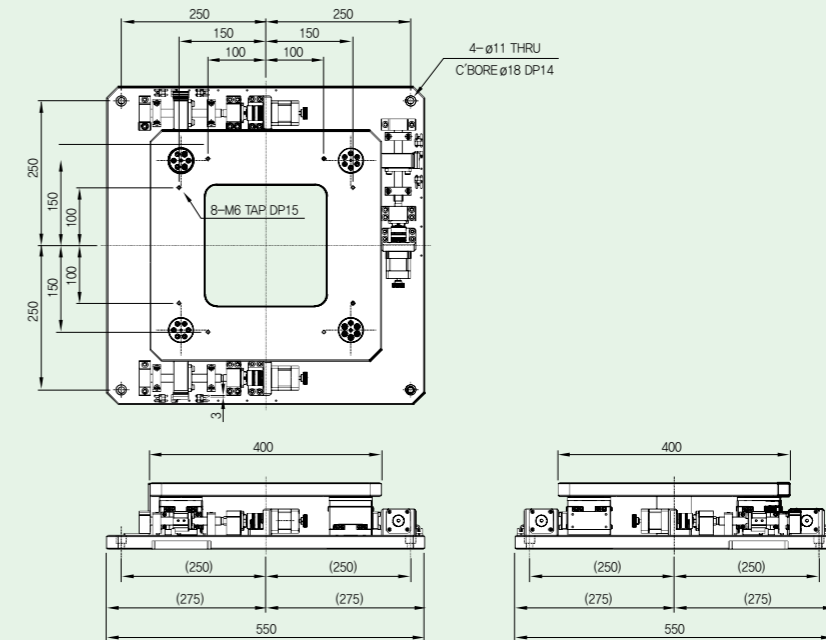


| Specification | Model no. | AAS-400 | AAS-500 |
|----------------------------------|-----------|--|-------------------------------|
| Table dimension (mm) | | 400x400 | 500x500 |
| Travel range (mm) ⁽¹⁾ | | $\pm 10/\pm 10/\pm 2.5^\circ$ | $\pm 20/\pm 20/\pm 2.5^\circ$ |
| Travel guide | | Ball screw $\phi 14$, Lead2, Cross roller guide | |
| Resolution (mm) | | 0.004/Pulse(Full step) | |
| Max. speed | | 40mm/sec[5kHz] | 20mm/sec[5kHz] |
| Accuracy | | 5 μ m | 5 μ m |
| Uni-repeatability | | $\pm 1.5\mu$ m | $\pm 1.5\mu$ m |
| Bi-repeatability | | $\pm 3\mu$ m | $\pm 3\mu$ m |
| Flatness (mm) | | 0.04 | 0.04 |
| Running parallelism (mm) | | 0.03 | 0.01 |
| Straightness (mm) | | 0.015 | 0.015 |
| Load capacity (kg) | | 80 | 80 |
| Material | | Aluminum(Option. SUS) | |
| Weight (kg) | | 40 | 38 |
| Motor model | | PK-545-NB(5P STEP) | |
| Drive model | | DFC5107-P(DC 24V) | |
| Sensor | | 1 Home sensor, 2 Limit sensor | |

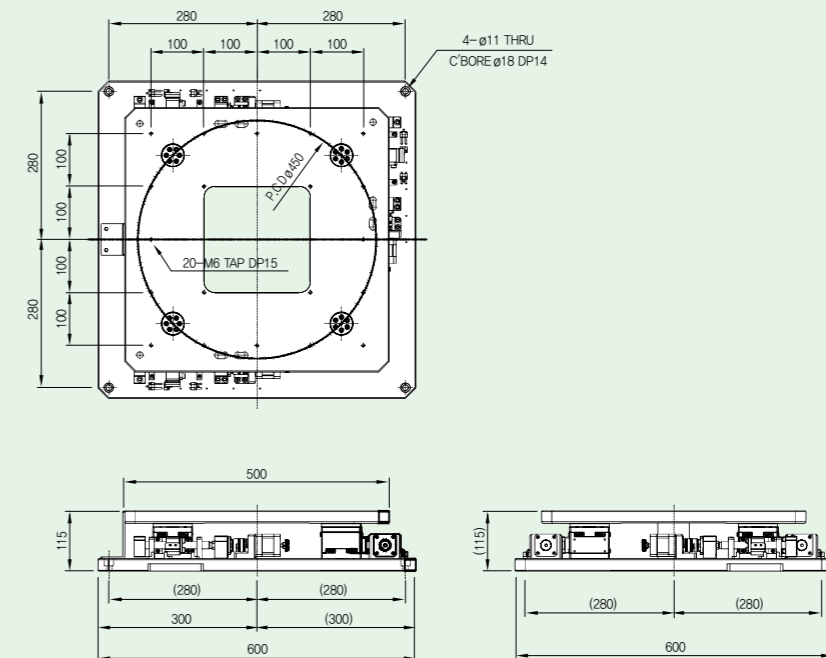
Note (1) Travel range of the rotation angle in the same direction when rotating the value applied.

(2) All products can be changed by customer order. please contact AIN for details.

AAS-400

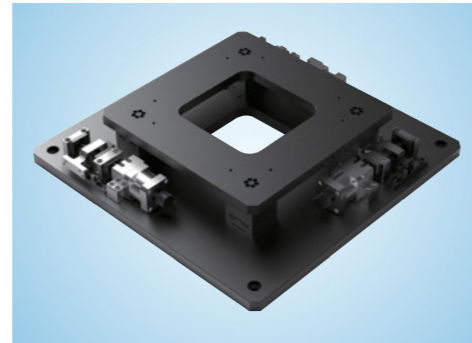
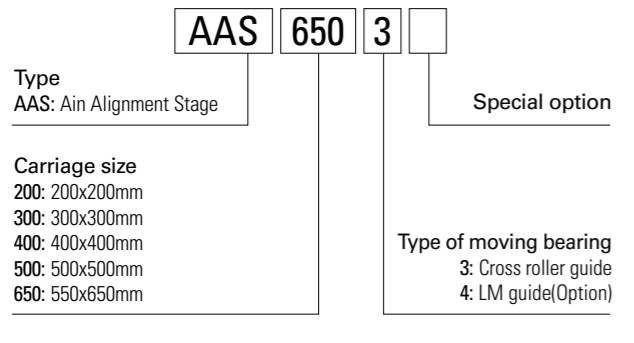


AAS-500



AAS-650 type

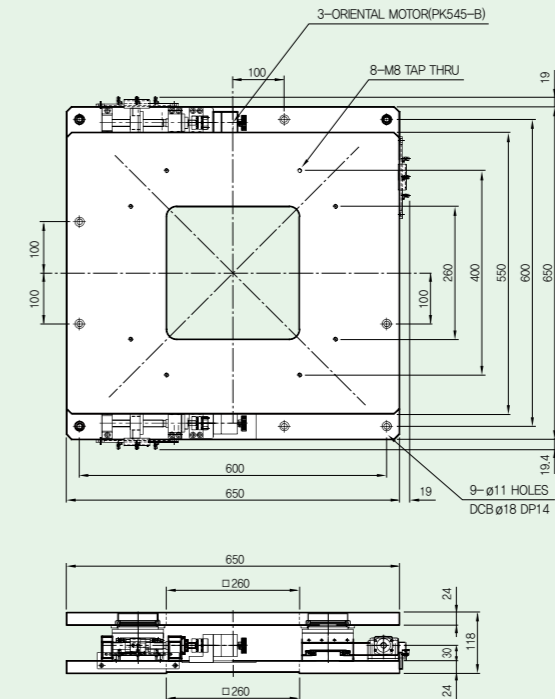
• Examples of model number formation



| Specification | Model no. | AAS-650 |
|----------------------------------|-----------|--|
| Table dimension (mm) | | 550x650 |
| Travel range (mm) ⁽¹⁾ | | ±12.5/±12.5//±2.5° |
| Travel guide | | Ballscrew ø14, Lead2, Cross roller guide |
| Resolution (mm) | | 0.004/Pulse(Full step) |
| Max. speed | | 20mm/sec[5kHz] |
| Accuracy | | 5µm |
| Uni-repeatability | | ±2µm |
| Bi-repeatability | | ±4µm |
| Flatness (mm) | | 0.04 |
| Running parallelism (mm) | | 0.01 |
| Straightness (mm) | | 0.015 |
| Load capacity (kg) | | 80 |
| Material | | Aluminum(Option. SUS) |
| Weight (kg) | | 40 |
| Motor model | | PK-545-NB(5P STEP) |
| Drive model | | DFC5107-P(DC 24V) |
| Sensor | | 1 Home sensor, 2 Limit sensor |

Note (1) Travel range of the rotation angle in the same direction when rotating the value applied.
 (2) All products can be changed by customer order.
 (3) More than dimension of model no. 650 is a customized model, so please contact AIN for details.

■ AAS-650



■ Diagram of connecting wires

