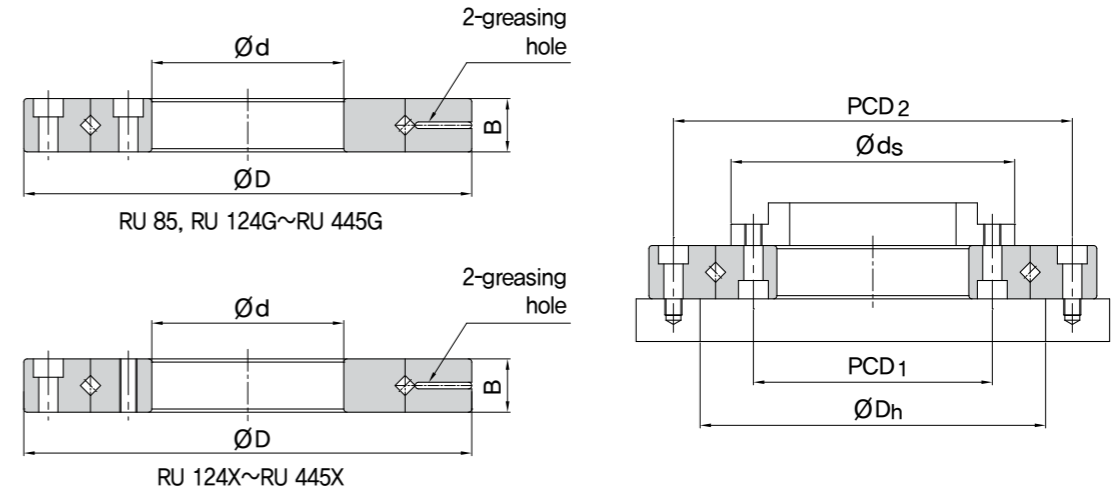
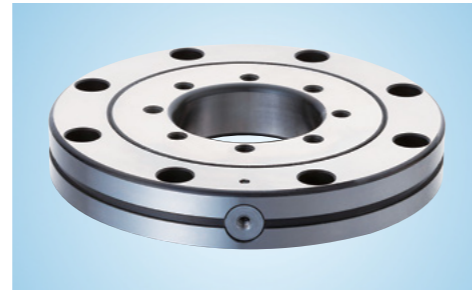
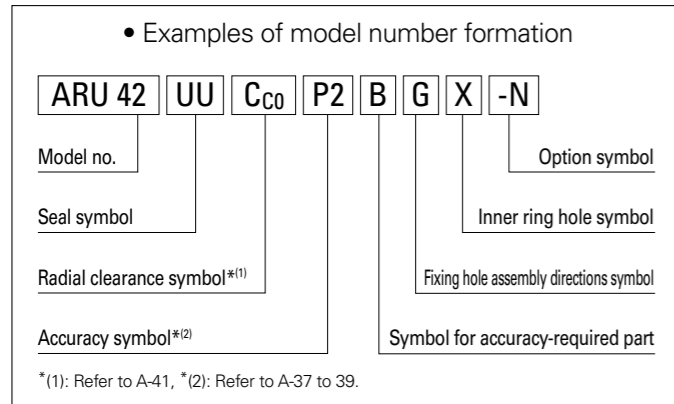


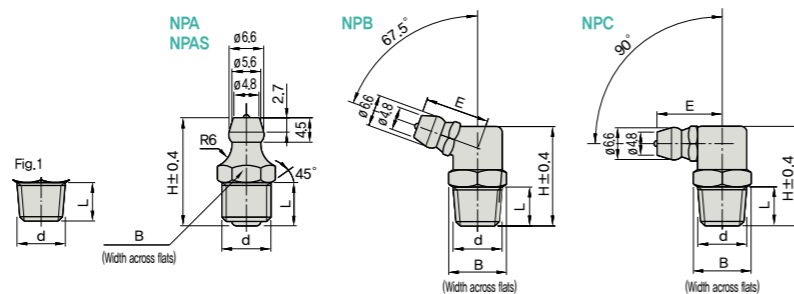
ARU type

Integrated inner and outer rings type



Shaft dia.	Model number	Major dimensions						Shoulder dimensions		Basic load rating (radial)		Weight
		Inner dia. d	Outer dia. D	Roller pitch circle dia. dp	Width B	Greasing hole d ₁	r	d _s	D _h	C kN	C ₀ kN	
20	ARU 42	20	70	41.5	12	3.1	0.6	37	47	7.35	8.35	0.29
35	ARU 66	35	95	66	15	3.1	0.6	59	74	17.5	22.3	0.62
55	ARU 85	55	120	85	15	3.1	0.6	79	93	20.3	29.5	1
80	ARU 124(G)	80	165	124	22	3.1	1	114	134	33.1	50.9	2.6
	ARU 124 X											
90	ARU 148(G)	90	210	147.5	25	3.1	1.5	133	162	49.1	76.8	4.9
	ARU 148 X											

Note) Optional grease nipple available for model RU.(See figure below)
Please indicate with a "-N" at the end of the model number if required.



(Unit: mm)

Fixing hole relationship			
Inner ring		Outer ring	
PCD ₁	Fixing hole	PCD ₂	Fixing hole
28	6-M3 through	57	6- $\varnothing 3.4$ through, $\varnothing 6.5$ counterbore depth 3.3
45	8-M4 through	83	8- $\varnothing 4.5$ through, $\varnothing 8$ counterbore depth 4.4
65	8-M5 through	105	8- $\varnothing 5.5$ through, $\varnothing 9.5$ counterbore depth 5.4
97	10- $\varnothing 5.5$ through, $\varnothing 9.5$ counterbore depth 5.4	148	10- $\varnothing 5.5$ through, $\varnothing 9.5$ counterbore depth 5.4
	10-M5 through		
112	12- $\varnothing 9$ through, $\varnothing 14$ counterbore depth 8.6	187	12- $\varnothing 9$ through, $\varnothing 14$ counterbore depth 8.6
	12-M8 through		

Part no.		d	H	L	E	B
Type	No.					
NPA NPAS	6	M6P \times 0.75	13.5	5	-	7
	6A	M6 \times P1.0	13.5	5	-	7
	1	R(PT)1/8	20(20.5)	9(9.5)	-	10
NPB	2	R(PT)1/4	25	12	-	14
	1	R(PT)1/8	21.5	8	12.5	10
NPC	2	R(PT)1/4	25	11	13.5	14
	1	R(PT)1/8	21.5	8	12.5	10
	2	R(PT)1/4	25	11	14.2	14

Dimensions in () are for GPAS1. <Fig.1> shows thread shapes of GPA1, 2 and GPAS1, 2.

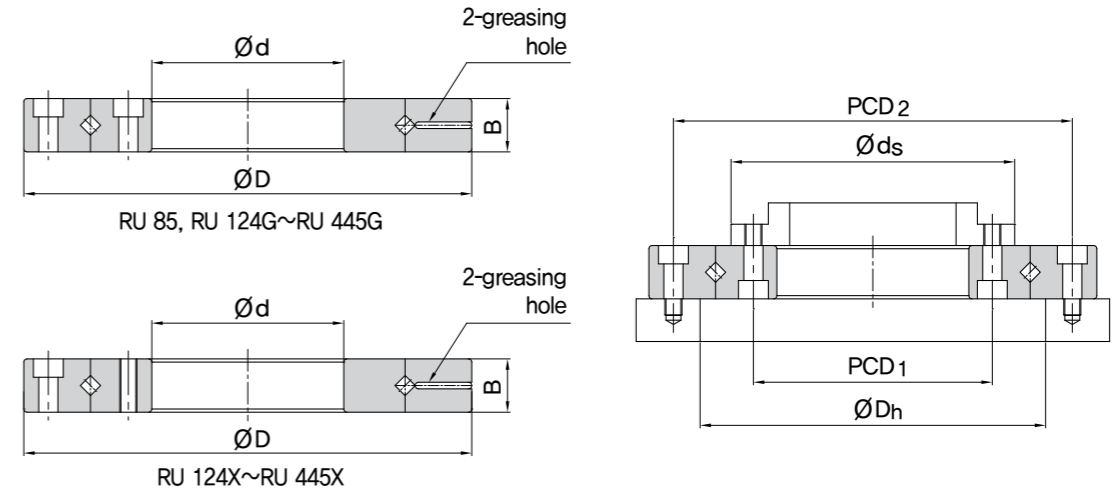
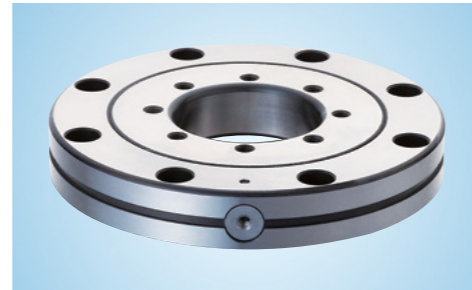
ARU type

Integrated inner and outer rings type

• Examples of model number formation

ARU148	UU	Cc0	P2	B	G	X	-N
Model no.	Seal symbol	Radial clearance symbol*(1)	Accuracy symbol*(2)		Inner ring hole symbol	Fixing hole assembly directions symbol	Option symbol
				Symbol for accuracy-required part			

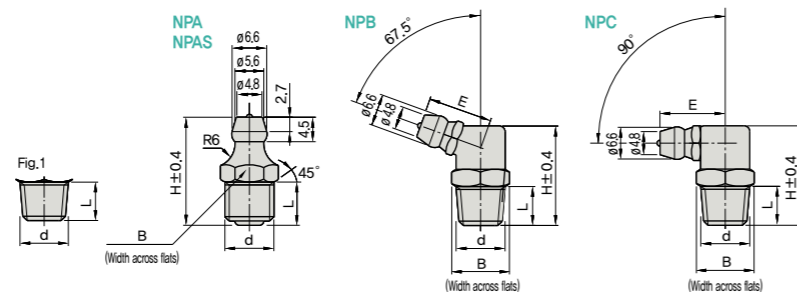
*(1): Refer to A-41, *(2): Refer to A-37 to 39.



Shaft dia.	Model number	Major dimensions						Shoulder dimensions		Basic load rating (radial)		Weight
		Inner dia. d	Outer dia. D	Roller pitch circle dia. dp	Width B	Greasing hole d ₁	r	d _s	D _h	C kN	C ₀ kN	
115	ARU 178(G)	115	240	178	28	3.1	1.5	161	195	80.3	135	6.8
	ARU 178 X											
160	ARU 228(G)	160	295	227.5	35	6	2	208	246	104	173	11.4
	ARU 228 X											
210	ARU 297(G)	210	380	297.3	40	6	2.5	272	320	156	281	21.3
	ARU 297 X											
000	ARUC 000(G)*	Features adjustable according to the specific order.										
	ARUC 000 X *											

Note (1) Optional grease nipple available for model RU.(See figure right side of the page)
Please indicate with a "-N" at the end of the model number if required.

(2) *ARUC type is a customized model, so please contact AIN for details.



(Unit: mm)

Fixing hole relationship			
Inner ring		Outer ring	
PCD ₁	Fixing hole	PCD ₂	Fixing hole
139	12-ø9 through, ø14 counterbore depth 8.6	187	12-ø9 through, ø14 counterbore depth 8.6
	12-M8 through		
184	12-ø9.5 through, ø14 counterbore depth 8.6	217	12-ø9 through, ø14 counterbore depth 8.6
	12-M8 through		
240	12-ø11 through, ø17.5 counterbore depth 10.8	270	12-ø11 through, ø17.5 counterbore depth 10.8
	12-M10 through		
Features adjustable according to the specific order.			

Part no.		d	H	L	E	B
Type	No.					
NPA NPAS	6	M6P×0.75	13.5	5	-	7
	6A	M6×P1.0	13.5	5	-	7
	1	R(PT)1/8	20(20.5)	9(9.5)	-	10
	2	R(PT)1/4	25	12	-	14
NPB	1	R(PT)1/8	21.5	8	12.5	10
	2	R(PT)1/4	25	11	13.5	14
NPC	1	R(PT)1/8	21.5	8	12.5	10
	2	R(PT)1/4	25	11	14.2	14

Dimensions in () are for GPAS1. <Fig.1> shows thread shapes of GPA1, 2 and GPAS1, 2.

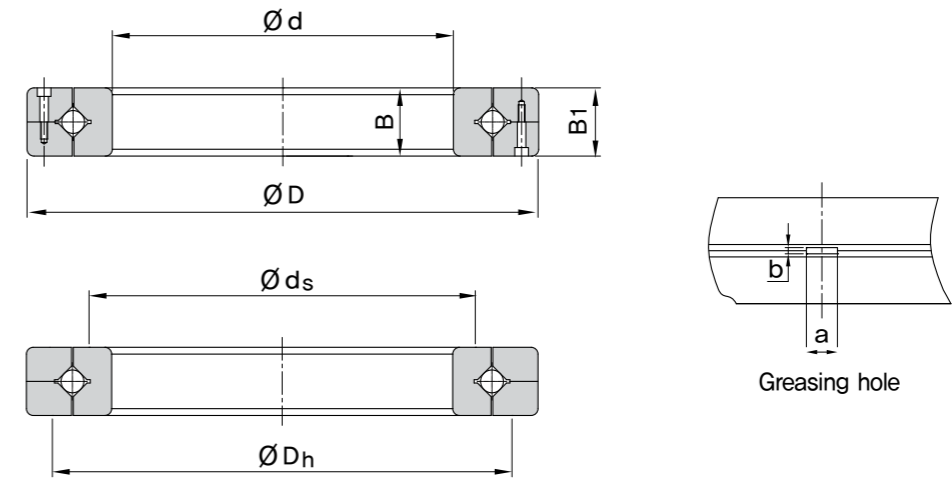
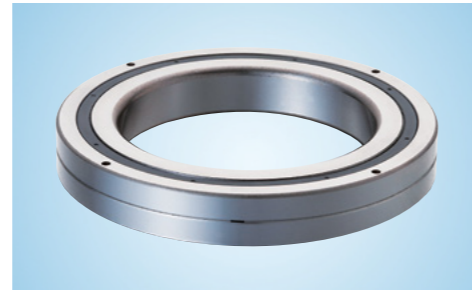
ARB type

Separable inner ring type

• Examples of model number formation

ARB 5013	UU	C _{Co}	P5
Model no.	Seal symbol	Radial clearance symbol ^{*(2)}	Accuracy symbol ^{*(1)}

^{*(1)}: Refer to A-37 to 49., ^{*(2)}: Refer to A-41.



Shaft diameter	Model number	Major			
		Inner diameter d	Outer diameter D	Roller pitch circle diameter dp	Width B B ₁
50	ARB 5013	50	80	64	13
60	ARB 6013	60	90	74	13
70	ARB 7013	70	100	84	13
80	ARB 8016	80	120	98	16
90	ARB 9016	90	130	108	16
100	ARB 10020	100	150	123	20
110	ARB 11020	110	160	133	20
120	ARB 12025	120	180	148	25
130	ARB 13025	130	190	158	25
140	ARB 14025	140	200	168	25

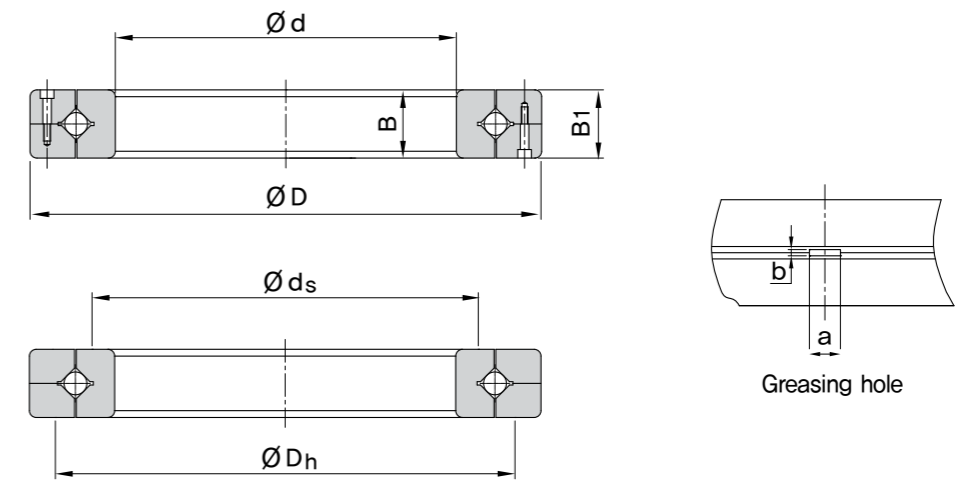
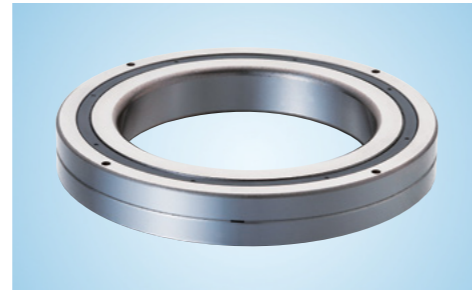
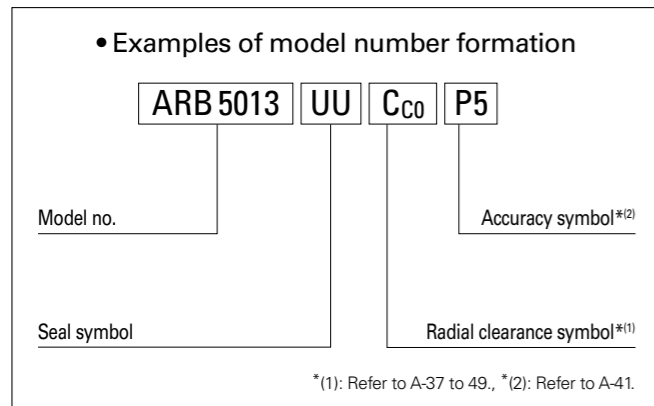
Note (1) The model number of a type with seals attached is RB...UU.
 (2) If a certain level of accuracy is required, this model is used for inner ring rotation.

(Unit: mm)

dimensions			Shoulder dimensions		Basic load rating (radial)		Weight kg
Greasing hole		r	d _s	D _h	C	C ₀	
a	b				kN	kN	
2.5	1.6	1	57.4	72	16.7	20.9	0.27
2.5	1.6	1	68	82	18.0	24.3	0.3
2.5	1.6	1	78	92	19.4	27.7	0.35
3	1.6	1	91	111	30.1	42.1	0.7
3	1.6	1.5	98	118	31.4	45.3	0.75
3.5	1.6	1.5	113	133	33.1	50.9	1.45
3.5	1.6	1.5	120	140	34.0	54	1.56
3.5	2	2	133	164	66.9	100	2.62
3.5	2	2	143	174	69.5	107	2.82
2.5	1.6	1.5	154	185	74.8	121	2.96

ARB type

Separable inner ring type



Shaft diameter	Model number	Major			
		Inner diameter d	Outer diameter D	Roller pitch circle diameter dp	Width B B ₁
150	ARB 15025	150	210	178	25
	ARB 15030	150	230	188	30
160	ARB 16025	160	220	188.6	25
180	ARB 18025	180	240	210	25
190	ARB 19025	190	240	211.9	25
200	ARB 20030	200	280	240	30
	ARB 20035	200	295	247	35
250	ARB 25030	250	330	287.5	30
	ARB 25040	250	355	300.7	40
000	ARB 00000 ⁽³⁾	Features adjustable according to the specific order.			

(Unit: mm)

dimensions			Shoulder dimensions		Basic load rating (radial)		Weight
Greasing hole		r	d _s	D _h	C	C ₀	kg
a	b				kN	kN	
3.5	2	1.5	164	194	76.8	128	3.16
4.5	3	2	173	211	100	156	5.3
3.5	2	2	173	204	81.7	135	3.14
3.5	2	2	195	225	84.0	143	3.44
3.5	1.6	1.5	202	222	84.7	148.2	2.99
4.5	3	2	221	258	114	200	6.7
5	3	2.5	225	270	151	252	9.6
4.5	3	2.5	269	306	126	244	8.1
6	3.5	3	275	326	195	348	14.8
Features adjustable according to the specific order.							

- Note (1) The model number of a type with seals attached is RB...UU.
 (2) If a certain level of accuracy is required, this model is used for inner ring rotation.
 (3) ARBC type is a customized model, so please contact AIN for details.