

New Rotary tiller, AGROS ARseries



Contents

1. Product Line-up_____ 3 - 4

2. Features and Specialty_____ 5 - 15

AR2000 (Small Type- **S)**

AR3000 (Medium Type - **M)**

AR4000 (Semi-Large Type - **SL)**

AR5000 (Large Type - **L)**

AR6000 (Wide Type - **W)**

AR7000 (Super Large Type - **SUPL)**



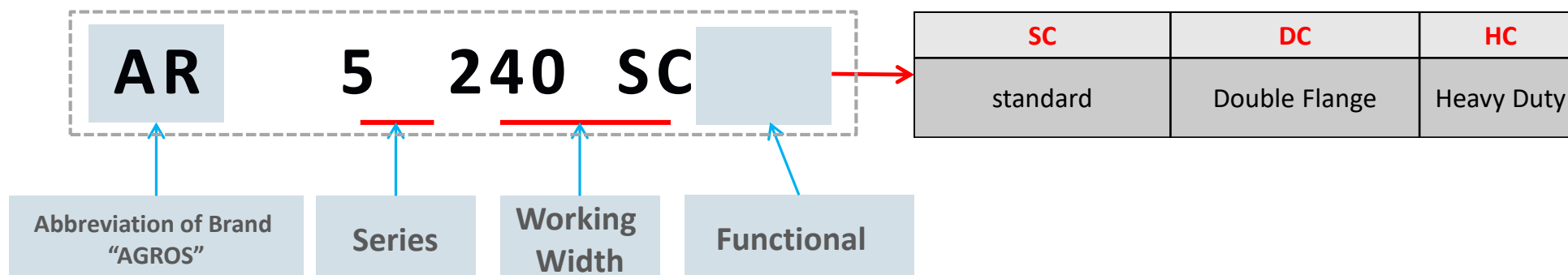
1. Product Line-up

♠ AR : (AGROS) Designation of Rotary Tiller

♠ AR Rotary Tiller Series

Applicable Tractor		Small	Medium	Medium & Semi-Large	Large	Semi-Large Large	Super Large
(HP)		25~50	50~60	55~85	70~120	60~150 마력	110~200 마력
Series		S	M	SL	L	W	SUPL
		2000	3000	4000	5000	6000	7000
General		SC	SC	SC	SC	SC	SC
Reinforcement Type	Double Flange	-	-	DC	DC	DC	DC
	Heavy Duty	-	-	HC	HC	-	-

♠ Name Classification



■ Reinforcement Type [DC, HC] Main Specification

Type	DC	Double Flange	■ 2 Flange (8T x 2 EA)
	HC	Heavy Duty	<ul style="list-style-type: none">■ Double Flange + enhancement of Knife Axle Pipe (Size & Thickness)■ Enhancement of Back Cover Thickness■ Adopting Fixed Cover

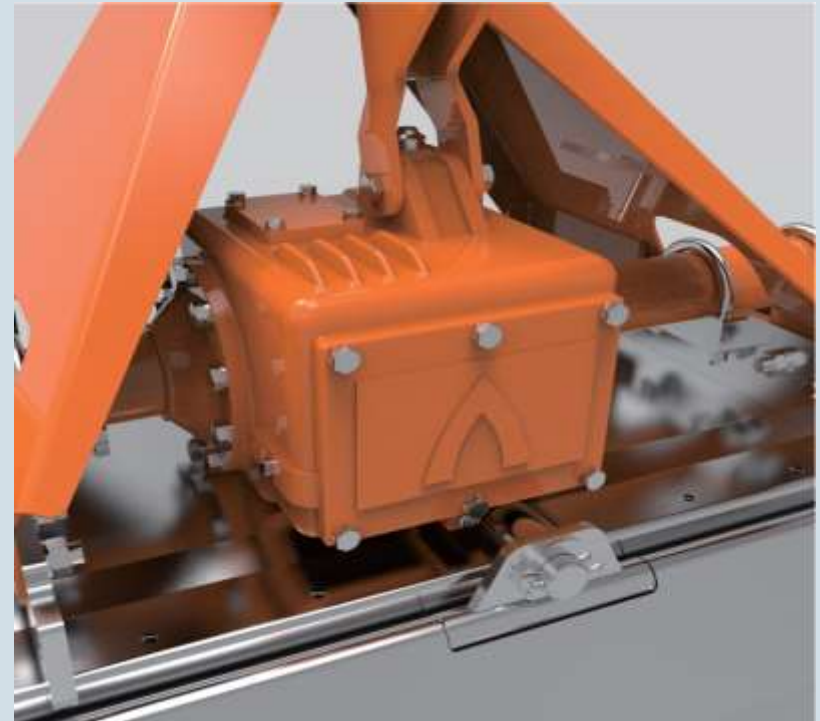
2. Features and Specialty

- **Gear Box**
- **Side Driving Part**
- **Knife Axle Assembly**
- **Main Functional Part**





- ★ Apply Medium Type Gear Box to Small Tiller AR2000 Series (Working Width 140-180cm) (Largest in other same Class)
- ★ Apply Forged Material(w/HT) to Gear and PTO Shaft
- ★ Oil Gauge Type Stopper



- ★ Apply Large Type Gear Box (4-speed transmission) to Medium and Large Tiller to AR3000 / AR4000 (Working Width : 185 – 215cm) (Largest in other same Class and same gear box of Wide Type)
- ★ Front Detachment of PTO Shaft for maintenance convenience
- ★ Bevel Gear Checking Window on Gearbox Top



- ★ Apply Large Type Gear Box (4-speed transmission, Max.150HP) to Medium Tiller AR5000 (Working Width : 215 – 260cm)
- ★ Apply same Gear Box to Wide Type AR6260, 6280, 6300
- ★ Adopt Fixed Front PTO Shaft Assembly
→ Enhance driving safety from Shock and Shake
- ★ Bevel Gear & Oil Gauge Checking Window on Gearbox Top
- ★ Apply Forged material



- ★ Apply High Strength Super Large Type Gear Box (4-speed transmission, Max.200HP) to Super Large Tiller AR7000 (Working Width : 240 – 300cm)
- ★ Adopt Fixed Front PTO Shaft Assembly
→ Enhance driving safety from Shock and Shake
- ★ Bevel Gear & Oil Gauge Checking Window on Gearbox Top
- ★ Apply Forged material

SIDE DRIVING PART

★ Side Plate
: High Tensile strength
Material (All Series)

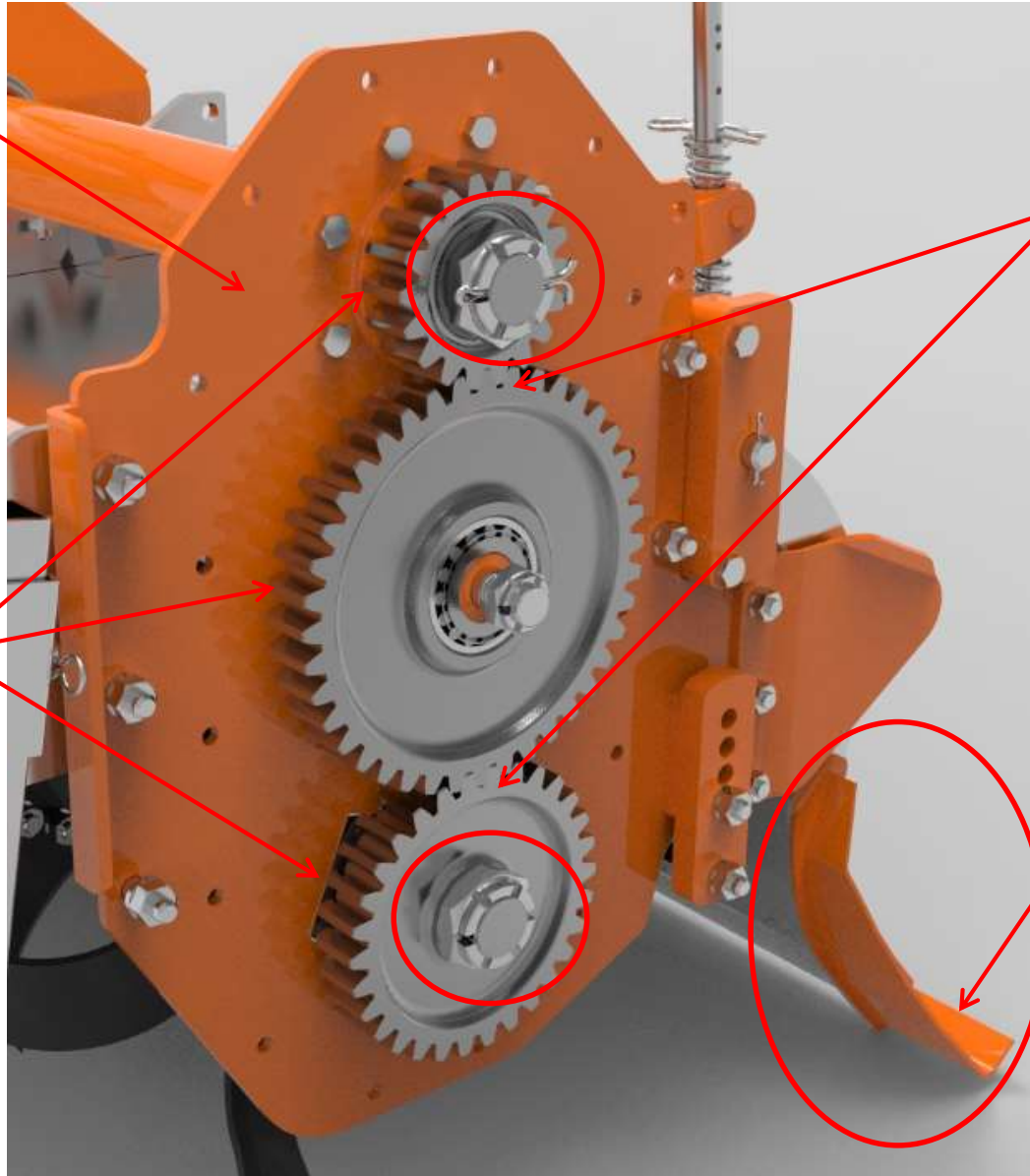
★ Driving Gear :
Forged Special
Material with HT
(All Series)

★ Apply Grooved Nut
to Prevent Loosening
Gear (All Series)

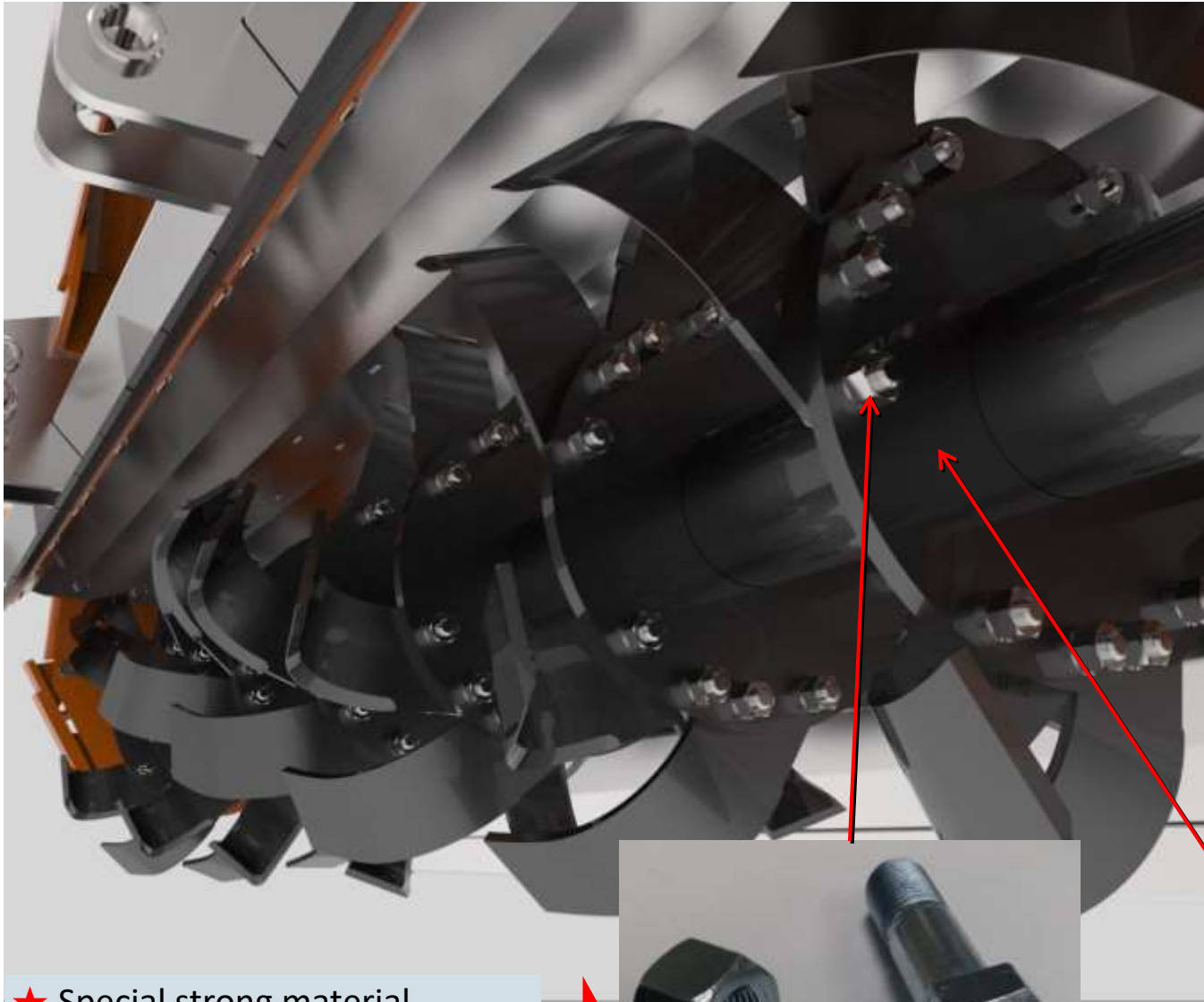
★ Apply
Taper Roller Bearing
to Driving and Middle
Gear (All Series)

★ Elaborate Side Gear
Assembly with
minimizing Backlash

★ Apply
Detachable extendable
back cover with
high tensile
strength material



Blade Axis Assembly



★ Special strong material
for Blade bolt and Nut



★ Apply superior blade
- Minimizing wear and tillage shock
- Increasing working efficiency
20% more than general blade

★ 20degree Blade Arrangement
Enhance tillage depth and
soil discharging

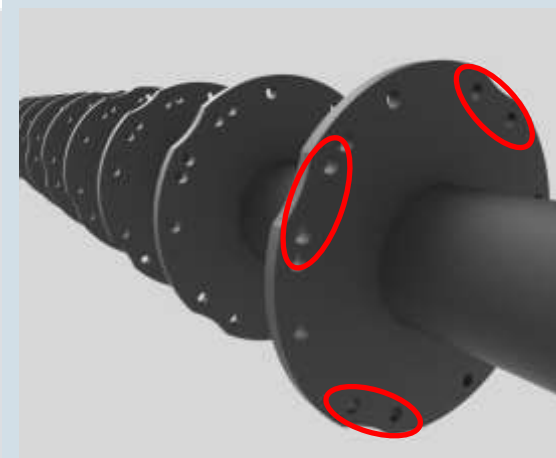
★ Apply High tensile strength
material to Flange and Blade
to prevent bending
(enhanced 30% comparing
with general material)

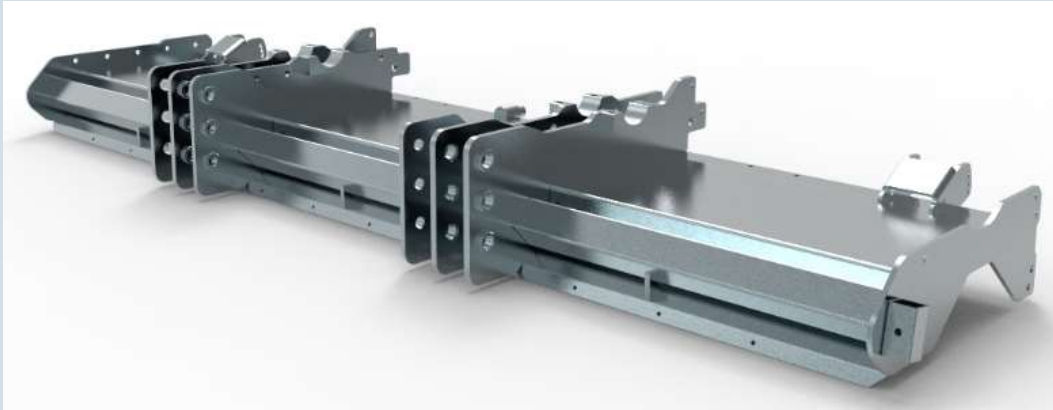




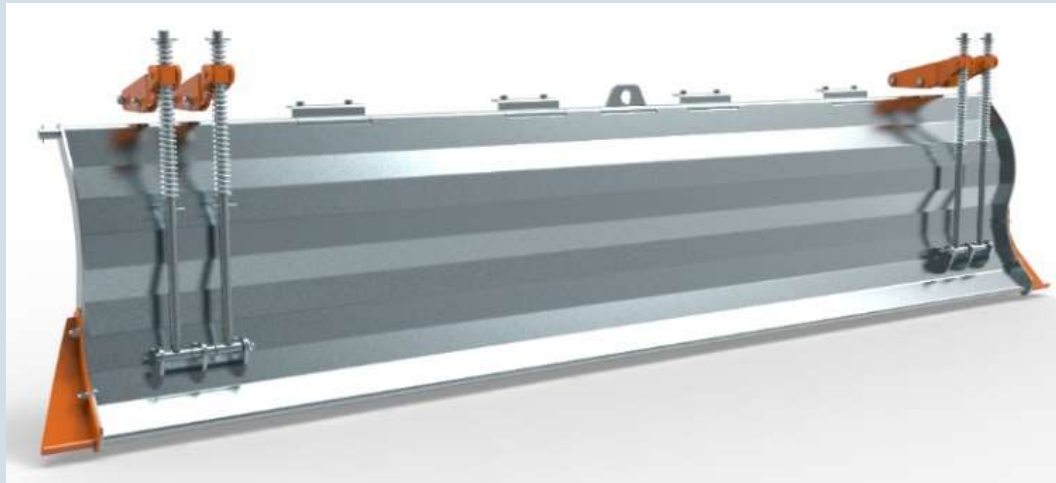
★ **Optional Blade axle by
4 blades / 6 blades**

- 15degree blade arrangement by 15degree
- 4 Blades for wetland and Clay area
- 6 Blades for Rice Field and shallow tillage depth field

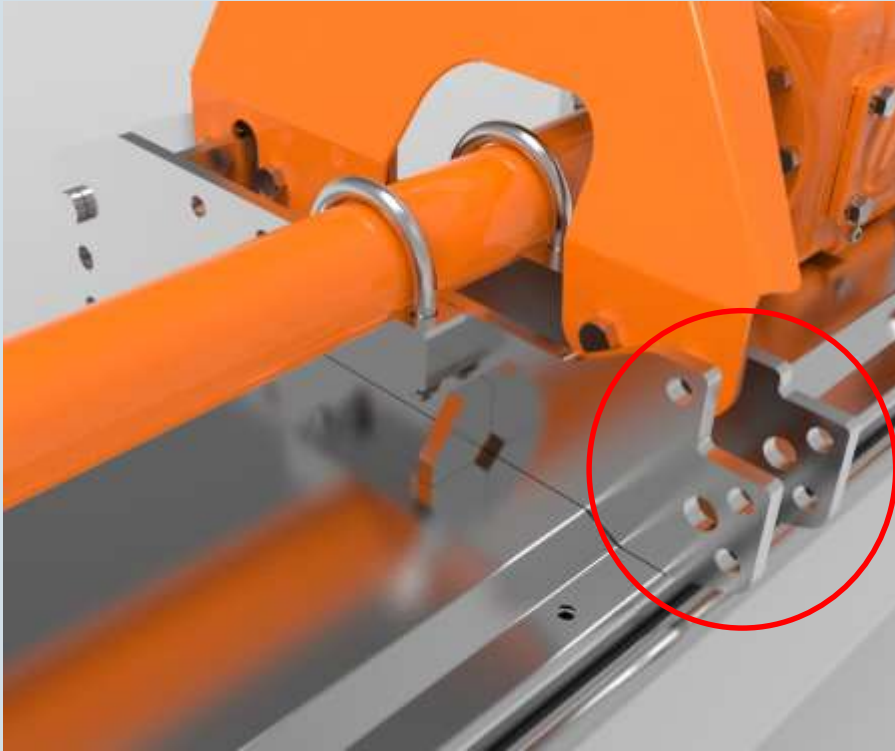




- ★ Apply High Tensile Strength material with Dual Structure main Deck
- ★ Optimized Design for Various Function compatiblensess
 - compatible to Rolling, Fixing, harrow Type
 - various hole for rear frame and other attachment



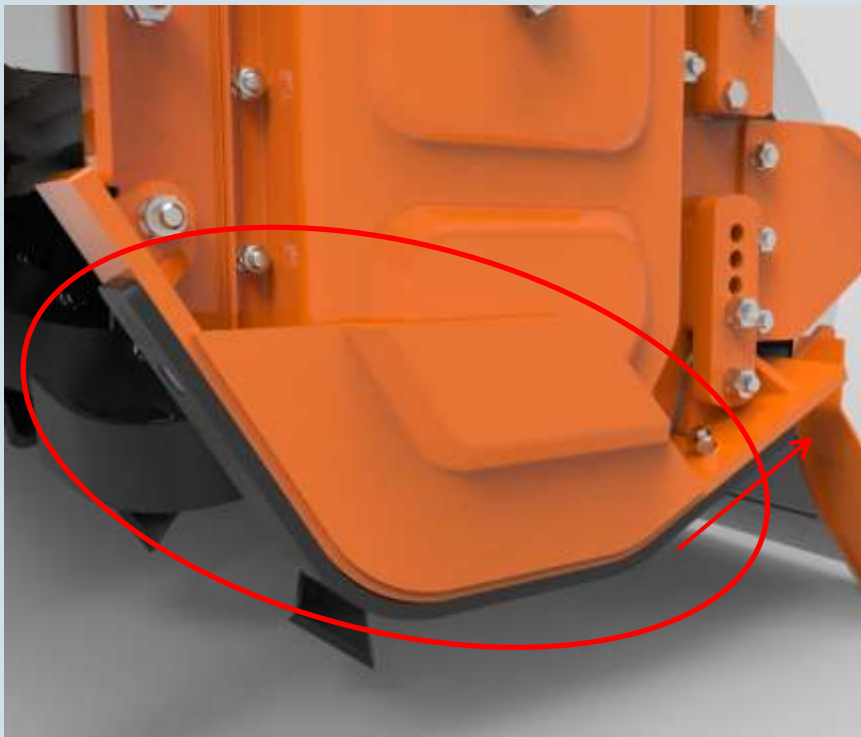
- ★ Rear Cover :
Firmness Structure with High Tensile strength material
- ★ Spring Tension Adjustment
- ★ Detachable side assistance cover
- ★ Various Rear Cover
(Rolling, Fixed, Harrow Type)



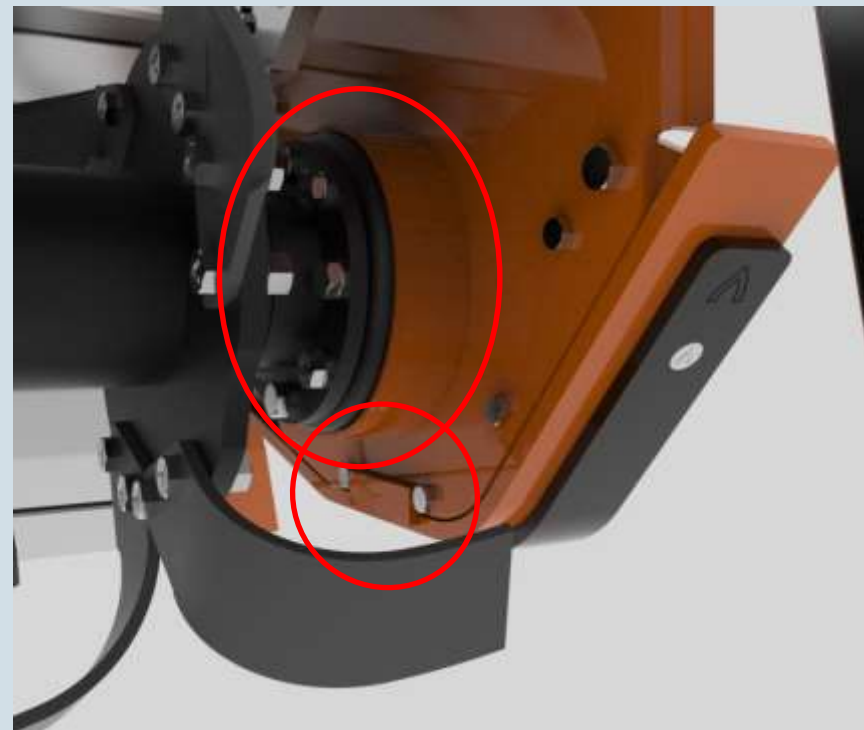
- ★ Super Strength and Durability of Main Deck as applying high tensile strength material and double beam welding
- ★ Versatile hole for other machines and brackets



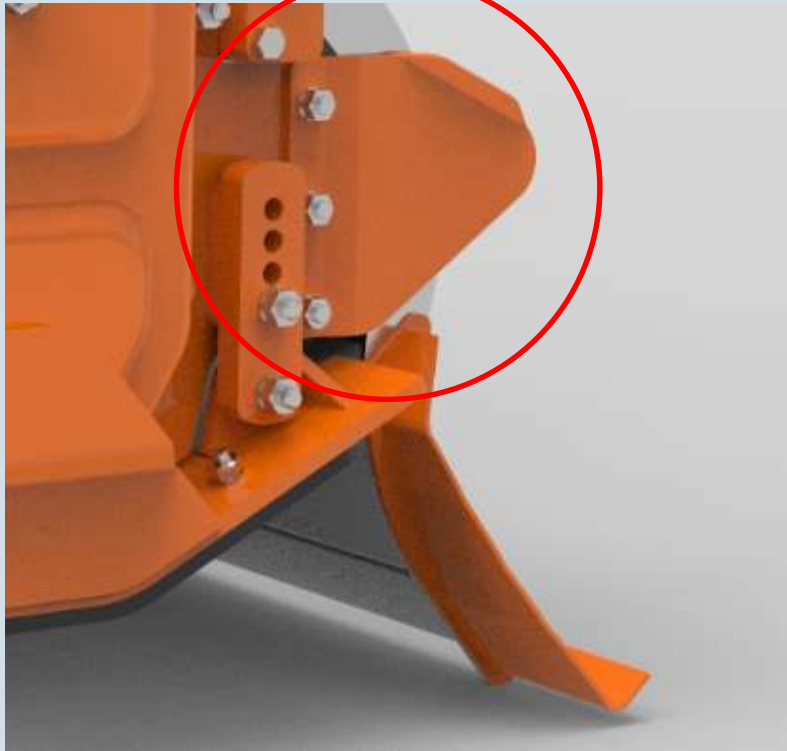
- ★ Triangle Frame Type Top Master with high tensile strength material
- ★ Versatile hole for other machines and brackets



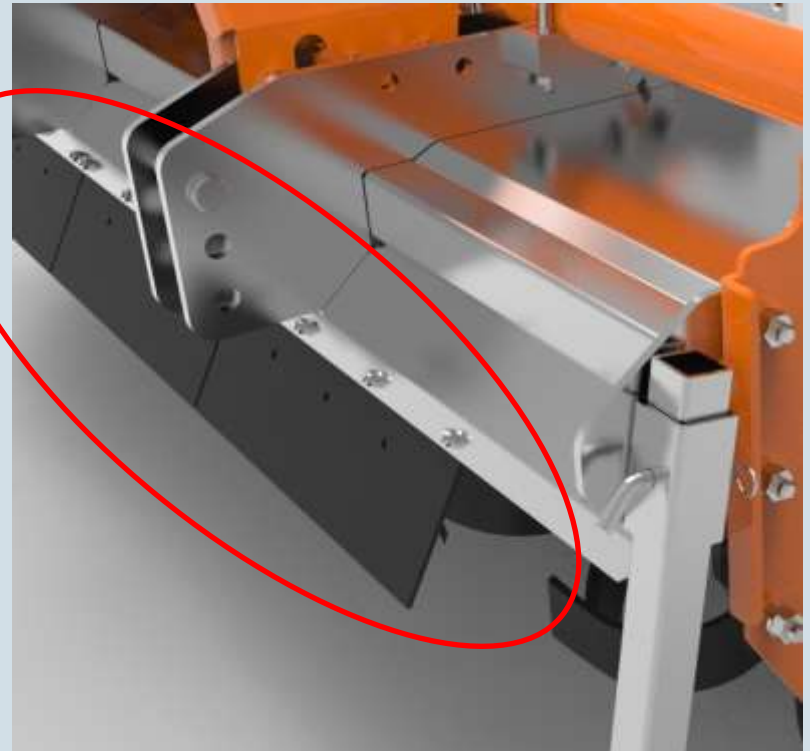
- ★ Side Cover Protecting Plate
- ★ Special Skid Design for deepening tillage
- ★ Additional exchangeable skid plate (material : SUP) to minimize abrasion



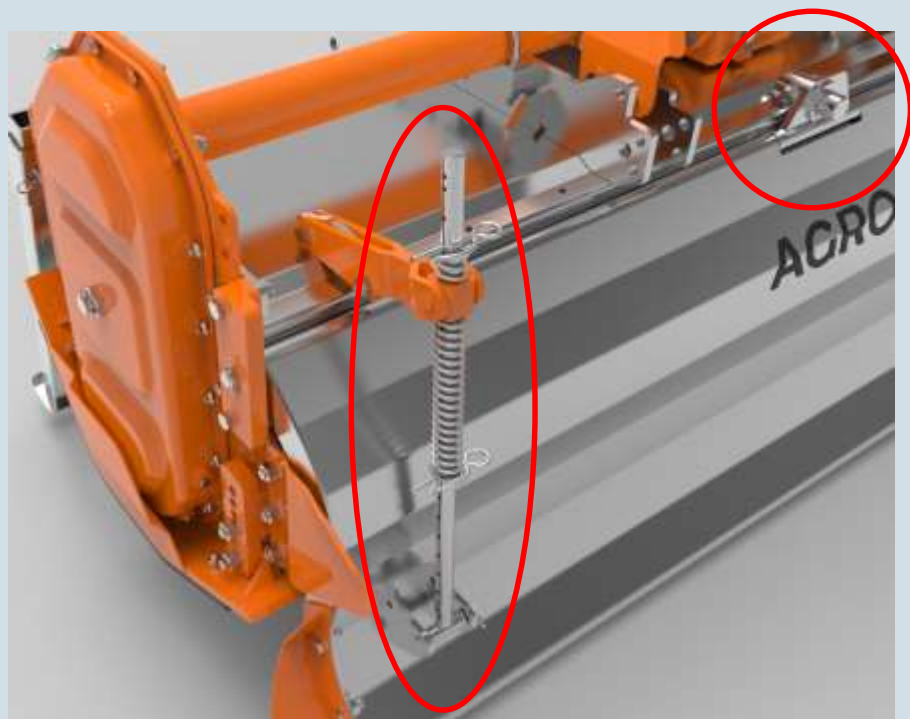
- ★ Apply Skid fixing plate on inner side plate to prevent skid bending to outside during tiller rotation
- ★ Protecting Structure for foreign material as applying dust cover and protecting plate for rotor axle



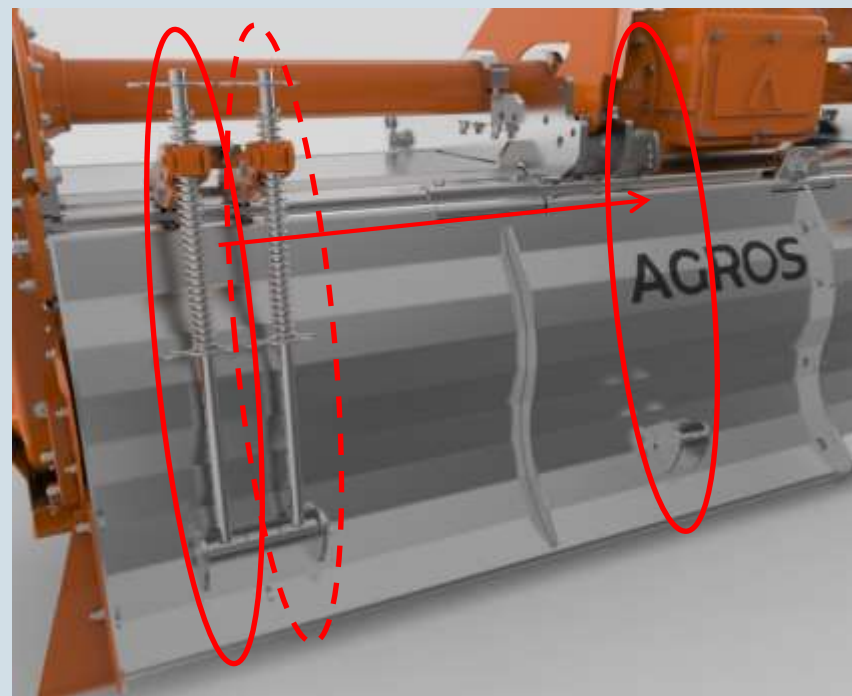
- ★ Side Soil protecting plate for soil breakaway
 - High tensile strength material
 - detachable type



- ★ Apply Rubber plates to prevent Soil Spatter at front
 - Material : Special rubbers which are having high strength and Flexibility
 - detachable type by 3 sections



- ★ Left & Right Rolling type back cover
(material : high tensile strength steel)
- ★ Spring Tension back cover adjustment bar
(assemble type)



- ★ Spring tension Back Cover adjustment bar
- movable mounting type to prevent
interference with other machines
(for Large, Super Large, Wide Type)