



# Flowmeter Product Directory

MODEL : APP



## FEATURES

- 연구실, 각종실험 DATA 측정에 사용한다.
- 접촉부 재질이 비금속이라 내식성이 우수하며 초 순수, 고 순도, 초 순수약액 소 유량 측정에 적합하다.
- 비금속 소재이기 때문에 경량화 되어 있다.
- 용도에 따라 Alarm Switch(On,Off)를 부가 할 수 있다.

## SPECIFICATION

CON`N	SIZE	MAT`L	PRESS.	TEMP.	ACCURACY
SCREW	8A	PVC	MAX 8kgf/cm <sup>2</sup>	MAX 80℃	FS ±1.5%
	10A	TEFLON			
	15A	PE, PP			

## MODEL CODE

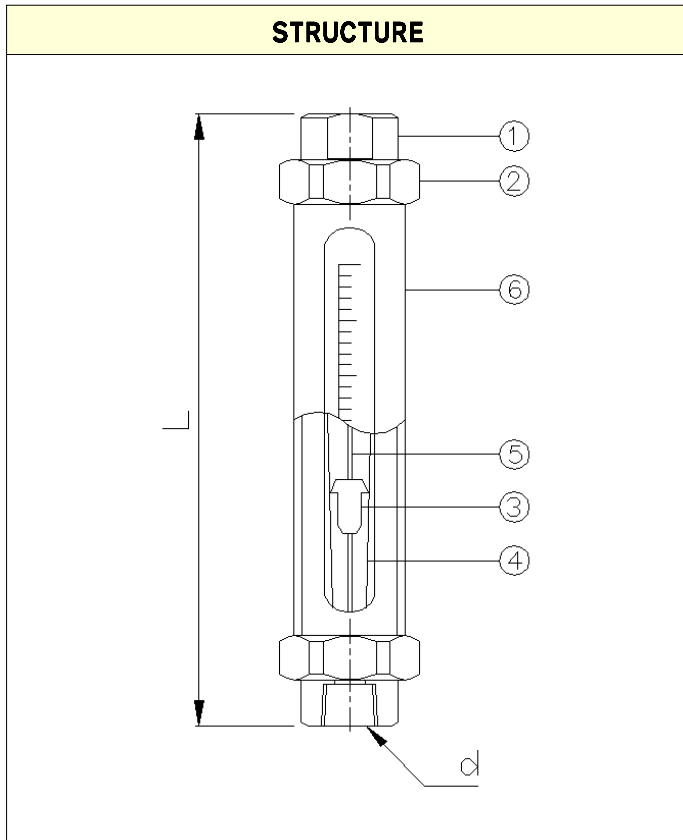
APP	-	<input type="checkbox"/>	-	<input type="checkbox"/>	-	<input type="checkbox"/>	DESCRIPTION
FLOW DIRECTION		1					BOTTOM - TOP
MATERIAL				4			PVC
				5			PTFE
				8			PE
				9			PP
				0			OTHER
CONNECTION						8A	PT 1/4" (male, Female)
						10A	PT 3/8" (male, Female)
						15A	PT 1/2" (male, Female)
						0	OTHER



# Flowmeter Product Directory

MODEL : APP

FLOW RATE						
DIVIDE SIZE(d)		STANDARD	GENERAL		LIMIT	LENGTH
		H <sub>2</sub> O	LIQUID (L/h)	AIR (NL/h)	kgf/cm <sup>2</sup>	L (mm)
8A	1/4B	0.05-0.5 l/min	2-20 } 10-100	30-300	8	220
		0.1-1 l/min		60-600		
		0.15-1.5 l/min		100-1000		
		10-100 l/h		150-1500		
10A	3/8B	0.2-2 l/min	10-100 } 40-400	150-1500	6	220
		0.4-4 l/min		200-2000		
		20-200 l/h		300-3000		260
		30-300 l/h		400-4000		
		40-400 l/h		500-5000		
15A	1/2B	1-10 l/min	40-400 } 100-1000	500-5000	6	220
		50-500 l/h		600-6000		
		80-800 l/h		800-8000		260
		100-1000 l/h		1000-10000		



**PART LIST**

NO	NAME	MATERIAL			
		NO.4	NO.5	NO.8	NO.9
1	Body	PVC	PTFE	PE	PP
2	Joint Nut	AL / SUS304,316			
3	Float	SUS316(L), GLASS, ACETAL, TEFLON			
4	Taper Tube	PYREX GLASS			
5	(Guid Rod)	SUS316(L),TEFLON, PVC			
6	Cover	AL / SUS304,316			