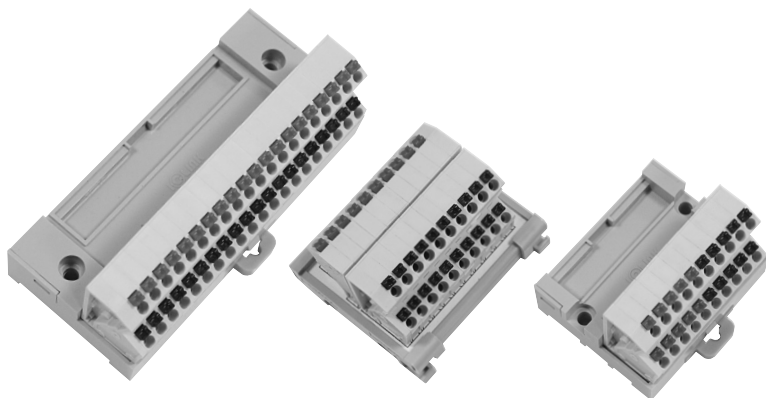


SA-COM Series Push-typed Screwless Terminal Block for Power Common

User's Guide



Thank you for purchasing product of SAMWON ACT.
Please check model of product that you purchase first, and read this manual prior to use it.

• Caution for Safety

⚠ Caution Case that results in serious damage in human body or equipment, and fire if user handles this equipment wrongly

⚠ Warning Case that results in slight damage in human body or equipment, and fire if user handles this equipment wrongly

⚠ Caution

1. When machining and wiring the mounting hole, do not allow foreign matter such as dust or wire covering to enter the connection terminal. Failure to do so may result in damage to the unit, heat, or ignition.
2. Be sure to shut off the power supply from the outside before mounting and wiring.

※ The connection cable for PLC of various makers is provided by us. Please refer to the catalogue or contact Head or branch office if you need more detail models and specifications.

⚠ Warning

1. Use within the specified temperature range. (−10℃ ~ +50℃) Damage to the outer case may occur.
2. Use within the specified rated voltage and rated current range.
This may result in fire or damage to the product.
3. Read this user's guide which is attached to product, and check product's nominal, characteristics, specification, wiring diagram and how to handle prior to use.
4. Please make sure to check the arrangement of the +, − when wiring.
It may be the cause of malfunction or damage of this equipment and user's.

• Model Configuration



- ① Common dedicated Push Type 5.0mm pitch European screwless terminal block
- ② No. of terminal Poles
- ③ Common terminal configuration

• Model Selection

Model	No. of Poles	Common terminal configuration	Dimensions (W * D mm)	Mounting method
SA-COM20	20	Upper row 10P(+)/ Lower row 10P(−) Common	57.5 * 48.0	Screw mounting/ DIN Rail
SA-COM20B		Left side row 10P(+)/ Right side row 10P(−) Common		
SA-COM20D	40(20x2)	Upper terminal block 20P(+) / Lower terminal block 20P(−) Common	63.0 * 56.2	DIN Rail
SA-COM40	40	Upper row 20P(+)/ Lower row 20P(−) Common	107.5 * 48.0	Screw mounting/ DIN Rail
SA-COM40B		Left side row 20P(+)/ Right side row 20P(−) Common		

• Characteristics

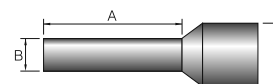
Rated voltage		125V AC / 24V DC
Rated current		10A (Total)
Insulation resistance		100MΩ or above (DC 500V)
Dielectric strength		AC500V 1min
Applicable wire	Single wire	0.5~1.5mm ²
	Twisted wire	UL : 17~22AWG / IEC 1.0mm ²
Wire stripping length		8~9mm
Ambient temperature		-10℃ ~ +50℃ (No condensation)

※ Be sure to use a ferrule or round type terminal when using a stranded wire.

• Material

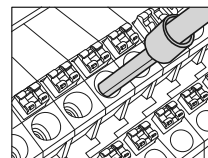
Terminal	PA66
Pin header	Copper, Tin plated
Wire guard	Stainless steel
Cover	Modified PPO
P.C.B	Epoxy 1.6t

• Ferrule Selection

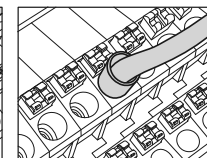


AWG/ (mm ²)	DIN46228	Other	A(mm)	B(mm)	C(mm)
20/0.5	White	White/Orange	10.0	1.3	3.2
18/0.75	Gray	Blue/White	10.0	1.5	3.4
17/1.0	Red	Red/Yellow	10.0	1.7	3.6

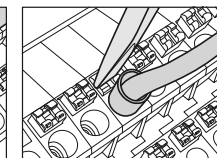
• Method of removal wire



When using a stranded wire, use a ferrule or a round type terminal. In case of a solid wire, use it without crimping tool.



Insert into the terminal block without using a separate tool.



When disconnecting the wires, keep the disconnect button pressed with the driver (− type) and disconnect the wires.

• Appropriate tool

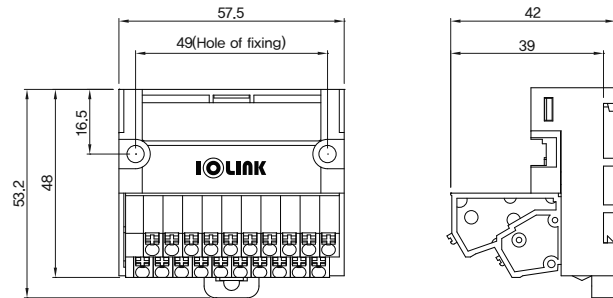
* ⊖ Driver



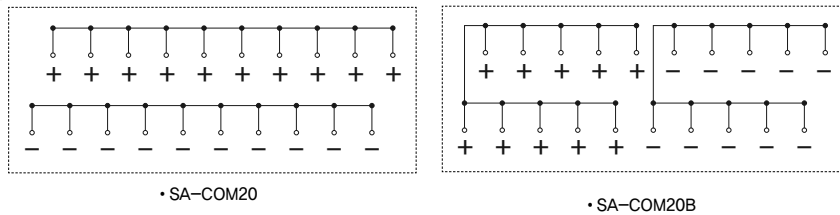
⊖ 2.6mm*0.35t

• SA-COM20
SA-COM20B

• Dimension

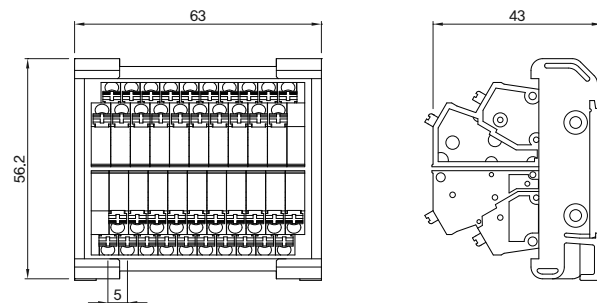


• Diagram

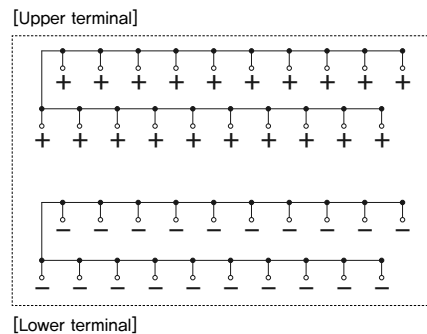


• SA-COM20D

• Dimension

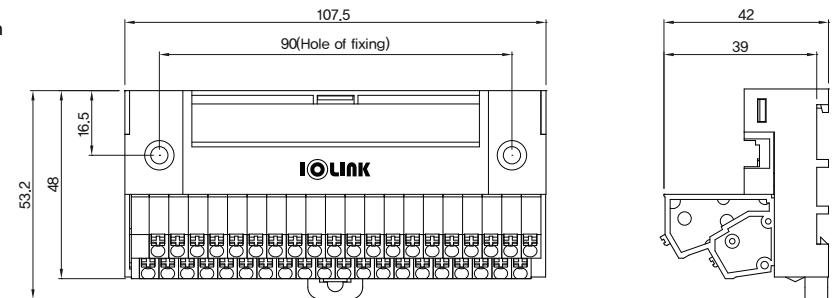


• Diagram



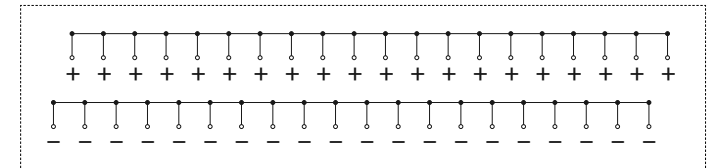
• SA-COM40
SA-COM40B

• Dimension

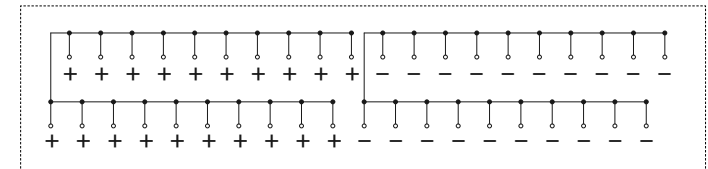


• Diagram

• SA-COM40



• SA-COM40B



※ The above specifications are subject to change without notice.

※ Please contact HQ or branch office where you purchased product for A/S of this product or technique.

Precautions

1. Use within the specified rated voltage and current range.
2. Use in the specified temperature and humidity and avoid using it outdoors.
3. Wire according to the wiring diagram and cut off the power before working.
4. For suitable wire, use solid wire: 0.5~1.5mm² / stranded wire: AWG 17~22, and use the crimp terminal after confirming "Selection of Ferrule".
5. For long-term storage, avoid places with dust or gas or high humidity.
6. Since this product is a resin molded product, do not apply impact.

Major products

- Relay terminal 1, 2, 4, 6, 8, 16, 32point
- Interface terminal 20, 24, 26, 34, 40, 50, 57, 40 x 2pole
- PLC I/O Connecting cables MITSUBISHI, LSIS, CIMON, OMRON, FUJI, YOKOGAWA, HITACHI, SIEMENS, AB, etc.
- Servo Connecting cables Encoder cable, Power cable, Motion cable / MITSUBISHI, YASKAWA, OMRON, PANASONIC, , LSIS, SAMSUNG, etc.
- Wiring harness / Special cable assembly



■ HQ : 47035, 28, Daedong-ro, Sasang-gu, Busan
TEL : (051)320-7777 FAX : (051)312-2233
■ SEOUL Office: 14353, M Cluster-707, 17, Deogan-ro
104beon-gil, Gwangmyeong-si, Gyeonggi-do
TEL : (02)837-2230 FAX : (02)837-2226