

USER'S MANUAL

2 Megapixel IR Bullet Camera (IBZ-S29-04 / IBZ-S29-04-POC)

Before installing and using the camera, please read this instructions thoroughly and keep for reference.

TABLE OF CONTENTS

Table of Contents

Precautions	3
Introduction and Features	4
Dimensions	5
Accessories & Connectors	6
Installation	7
Main Menu	8
Focus	9
Exposure	10
White Balance	12
Image	13
Intelligent	15
Special Function	16
Display	17
Specifications	18

PRECAUTIONS

- **Avoid prolonged use in high temperature and high humidity environment**

Use the product within the operating range specified in the specifications.
Avoid locations where heat is generated, and Install in a well-ventilated place.

- **Do not install the camera in an unstable place**

Confirm that the camera is firmly fixed after installation.
Dropping the product due to poor installation may cause injury.

- **Install the camera away from dusty places**

This may cause product malfunction, poor image quality, fire or electric shock.

- **Do not install the camera under unstable lighting conditions**

It is possible to output an inappropriate image due to severe illumination change or lighting flickering.

- **Do not install the camera near gas or oil leaks**

Use in a place with flammable materials may cause fire.
Also, keep distance from power line cables or use separate metal piping.

- **Do not disassemble the camera or insert foreign objects**

There is no warranty liability for products that user disassembled.

- **Do not drop the camera or shock it**

It may cause malfunction.

- **Never keep the camera directly face to strong light.**

Exposure to strong light such as sunlight may cause light spreading or light blurring. In addition, direct sunlight can damage the image sensor.

- **Prepare for malfunction due to natural disasters**

The grounding work or the installation of the surge protector can minimize damage to the product due to lightning, etc.

- **Be sure to check the specifications of the power supply**

Before connecting the power to the product, make sure that the power supply meets the recommended specifications.

INTRODUCTION & FEATURES

Product Introduction

IBZ-S29-04 is a high-resolution camera that outputs 2 megapixel SDI (Serialized Digital Interface) video and transmits high-definition video over coaxial cable.

It contains high resolution half-inch CMOS image sensor, ISP (Image Signal Processor) and SDI transfer block inside. In addition, because this product has dust-proof, water-proof housing and built-in IR-LED that it can provide clear video even in the outdoor environment or at night. There are two models as follows.

IBZ-S29-04 : DC12V model

IBZ-S29-04-POC : One Cable model

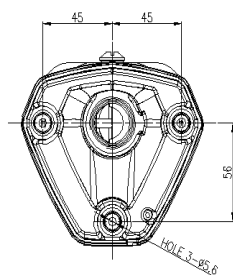
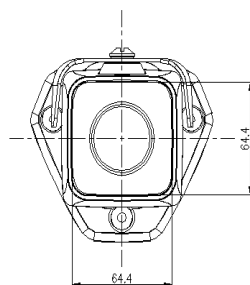
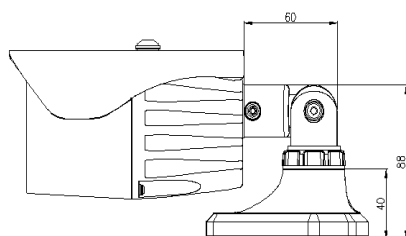
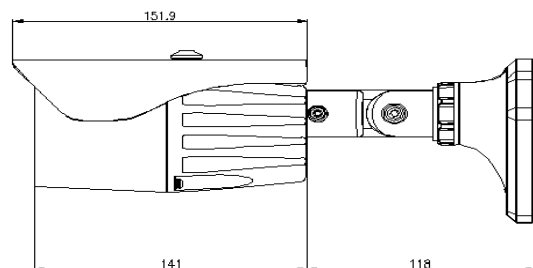
Features

- 1/2", Sony Exmor CMOS sensor
- Built-in 3.6~10mm Motorized varifocal Lens
- Day & Night (ICR)
- 2D + 3D DNR (Digital Noise Reduction)
- D WDR (Digital Wide Dynamic Range)
- Privacy Masking function
- 3-Axis Camera Bracket for easy installation
- IP67, Aluminum Die-casting Housing
- Built-in 4pcs High power IR-LED
- Camera Control through RS-485
- EX-SDI Video Output
- One-Cable function (IBZ-S29-04-POC model only)

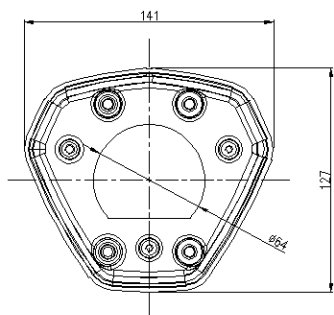
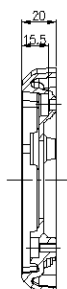
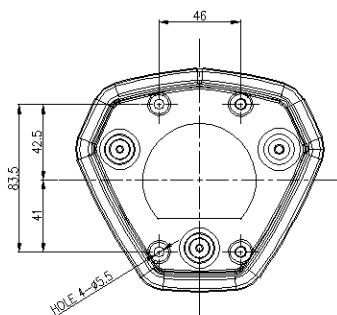
As well as video transmission, power supply to the camera and camera control can be performed via coax cable.

- DC12V Power (IBZ-S29-04)

DIMENSIONS



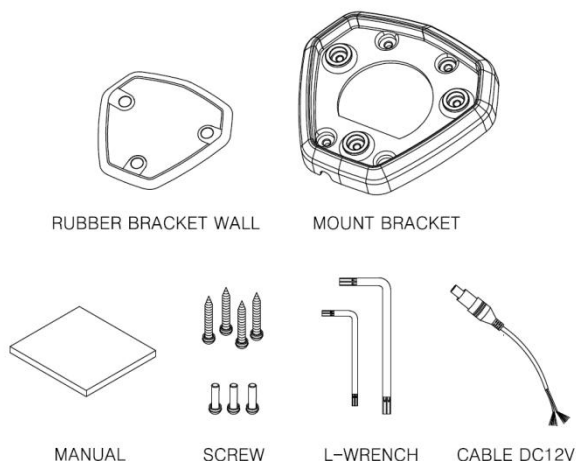
Bracket Pipe Plate



(Unit : mm)

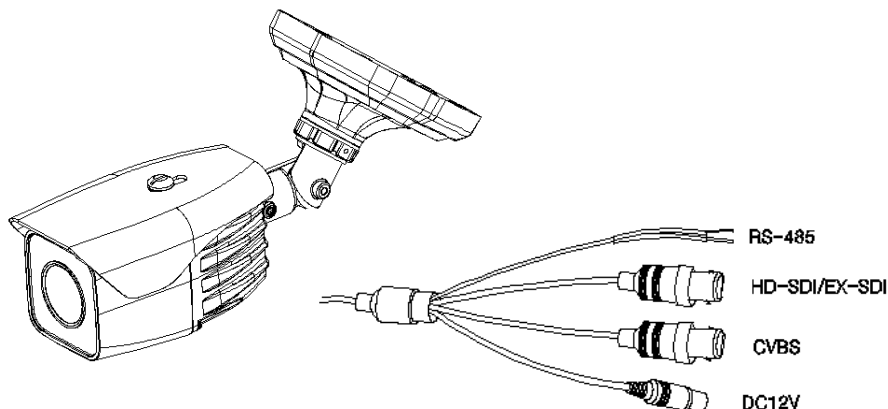
ACCESSORIES & CONNECTORS

ACCESSORIES



CONNECTORS

- BNC connector can be connected to a monitor, DVR or video transmitter.
- If necessary, user can control camera through RS-485 communication
- In case of IBZ-S29-04 model, Connect DC12V to camera.
- In case of IBZ-S29-04-POC, camera power can be supplied through coax cable. In such a case, do not connect DC12V to camera.



INSTALLATION

1. Mounting the Mount Bracket

- Using the supplied 4 screws, mount the mount bracket to wall or ceiling.

2. Mounting the Camera

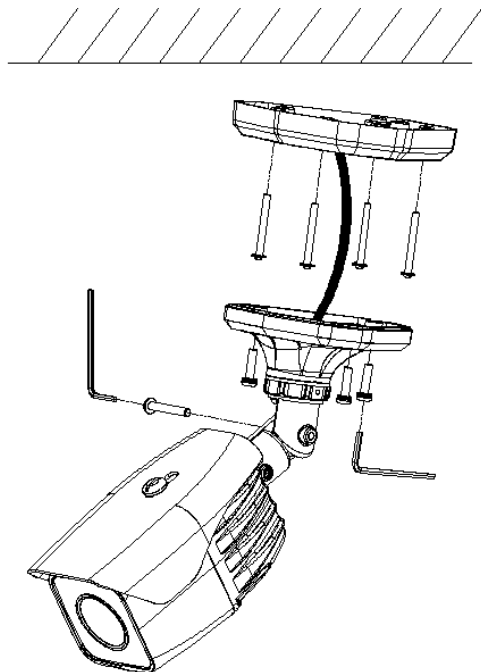
- Using supplied L-wrench, firmly fix the camera to the mount bracket.

3. Supply of power

- Connect DC12V to camera.
- To prevent fire or electric shock, use a reliable power supply.

4. Camera Angle Adjustment

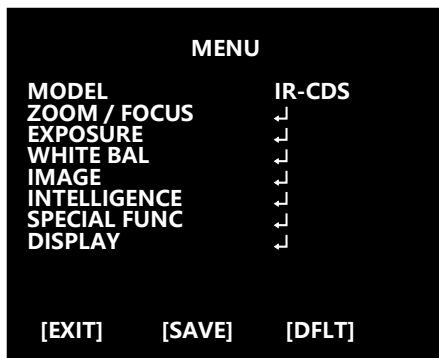
- Adjust the camera direction by turning the pan bracket left or right, the tilt bracket up or down, then fix the screws tight.
- Also, adjust zoom and focus to get the desired angle of view.



MAIN MENU

Camera menu is subject to change without prior notice for the functional upgrade or quality improvement. Also, we may use additional slip sheet for the change. Please check the camera version and the slip sheet if the camera menu and this manual's menu is not matched.

MAIN MENU



The menu consists of the “Main Menu” and “Sub Menu”.

Except MODEL, the rest main menus have associated sub menu.
So, if you select each main menu, associated sub menu is displayed.

If you want save the current settings, select [SAVE]

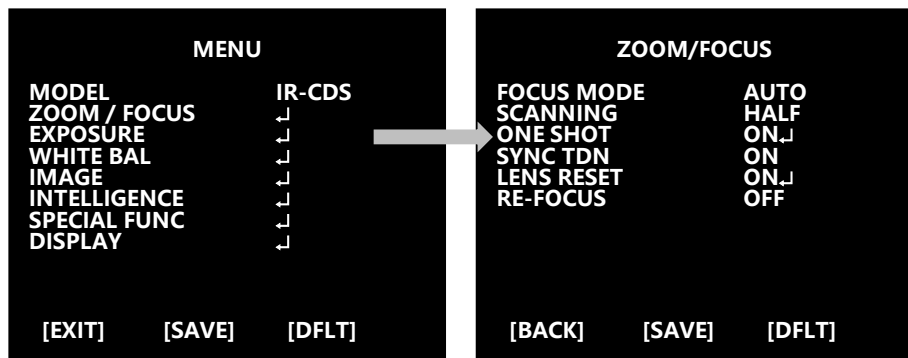
If you do not want save the current settings, select [EXIT]
But, before power off → on, camera will keep the changed current settings.

If you want to restore the default settings, select [DFLT]

◆ MODEL : Please keep “IR-CDS” setting without change

- ▶ D&N, IR-CDS
 - ▷ D&N : Apply to non-IR model only
 - ▷ IR-CDS : Apply to IR model
 - ▷ COLOR : Apply to non TDN model

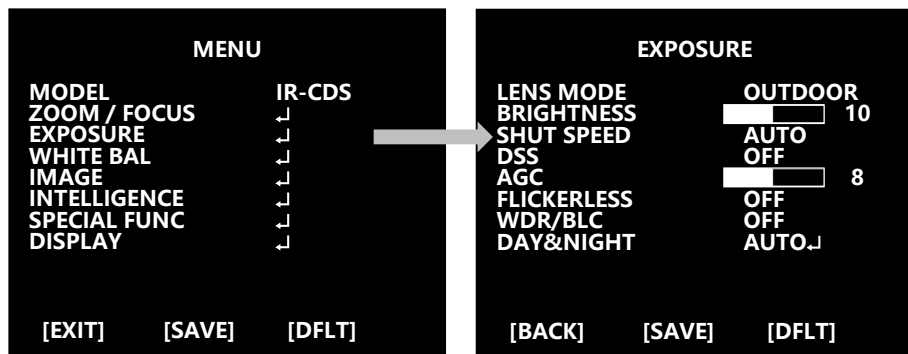
FOCUS



- ◆ FOCUS MODE : Set auto focus mode ► AUTO, MANUAL
- ◆ SCANNING : Set focus scan range ► HALF, FULL
- ◆ ONESHOT : Set readjust focus
 - ON : Pressing the [SET] button more than 3 seconds activates the One-push Auto Focus.
- ◆ SYNC TDN : Performs the One-shot AF when the TDN switched.
- ◆ LENS RESET : Performs the lens initialization.
 - ON : Pressing the [SET] button more than 3 seconds activates the Lens initialization.
- ◆ RE-FOCUS : Set refocusing time interval. ► OFF, ON↵
 - ▷ INTERVAL TIME : 1day ~ 10days

EXPOSURE

EXPOSURE

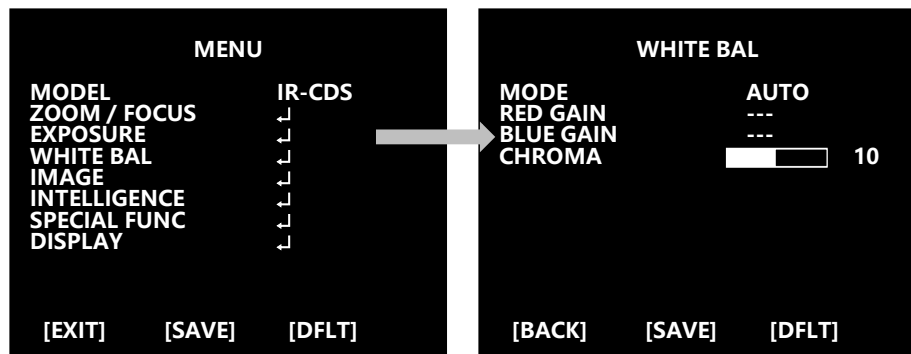


- ◆ LENS MODE : Select LENS mode↵
 - ▷ INDOOR / OUTDOOR / DEBLUR
- ◆ BRIGHTNESS : Set brightness level ▶ 0(dark) ~ 20(bright) steps
- ◆ SHUT SPEED : Set the shutter operation mode ▶ AUTO / MANUAL↵
 - ▷ Manual Shutter Speed
 - * 60/50 fps mode :
1/60(50), 1/100, 1/120, 1/250, 1/500, 1/700, 1/1000, 1/2000, 1/3000,
1/6000, 1/10000, 1/20000, 1/30000, 1/60000 sec
 - * 30/25 fps mode :
1/30(25), 1/60(50), 1/100, 1/120, 1/250, 1/500, 1/700, 1/1000, 1/2000,
1/3000, 1/6000, 1/10000, 1/20000, 1/30000, 1/60000 sec
- ◆ DSS : Set maximum DSS (Digital Slow Shutter) operating range.
 - * 60/50 fps mode ▶ OFF / x2, x4, x8, x16, x32, x64
 - * 30/25 fps mode ▶ OFF / x2, x4, x8, x16, x32
- ◆ AGC : Set Max. Gain level ▶ 0 ~ 10 steps
- ◆ FLICKERLESS : Set Flickerless mode ▶ OFF / ON

- ◆ WDR/BLC : Select WDR(Wide Dynamic Range) or BLC(Back Light compensation)
 - ▶ WDR↓
 - ▷ MODE : Select WDR mode.
 - ▶ LINE, FRAME
 - ▷ LEVEL : Set WDR level.
 - ▶ LOW, MID-LOW, MIDDLE, MID-HIGH, HIGH
 - ※ WDR doesn't work in Manual Shutter Mode.
 - ※ When WDR on, CVBS output is disabled.
 - ▶ BLC↓
 - ▷ POSITION : Adjust the position of BLC target window
 - ▷ SIZE : Adjust the BLC target window size
 - ※ Can't use WDR and BLC at the same time.
(When WDR On, BLC will be Off. And when BLC is On, WDR will be Off)
- ◆ DAY&NIGHT : Select how to judge Day & Night condition.
 - ▶ MODE : Please keep MODEL as "IR-CDS" without change
 - ▷ AUTO
 - ※ Day&Night condition is decided by built-in illumination sensor.
 - ▶ DELAY : 0 ~ 255 sec
 - ▶ THRS : 0 ~ 7
 - ▶ GAP : LOW, MIDDLE, HIGH
 - ▶ ANTI-SAT : Improves light saturation by LED (0~20)
 - ▶ BURST : OFF/ON
 - ▶ POLARITY : Set external Input polarity
(ACTIVE LOW / ACTIVE HIGH)
 - ▷ DAY
 - ※ Regardless of the ambient illumination, camera keeps Day mode.
 - ▷ NIGHT
 - ※ Regardless of the ambient illumination, camera keeps Night mode.
 - ▶ ANTI-SAT : Improves light saturation by LED (0~20)
 - ▶ BURST : OFF/ON

WHITE BALANCE

WHITE BALANCE



◆ AWB : Set WHITE BALANCE mode

► AUTO / ONE PUSH⁴ / MANUAL / INDOOR / OUTDOOR / AUTO-EXT

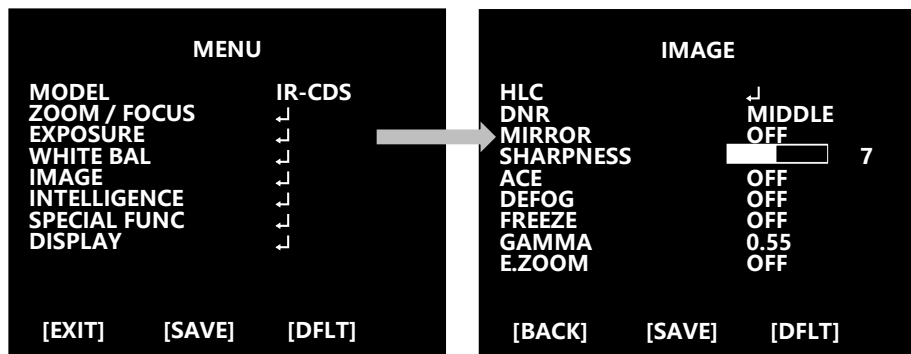
- ▷ AUTO : Automatically adjusts color according to the lighting condition.
- ▷ ONE PUSH : While ONE PUSH pressed, camera runs the white balance working. if ONE PUSH released, camera stops white balance working.
- ▷ MANUAL⁴ : Camera does not perform white balance working. User can increase or decrease "RED GAIN" or "BLUE GAIN" manually.
- ▷ INDOOR : Set color temperature to Indoor light (3700°K)
- ▷ OUTDOOR : Set color temperature to Outdoor light (5100°K)
- ▷ AUTO-EXT : It operates in a wider color temperature range than Auto mode.

◆ RED GAIN : Adjust R gain value ► 0 ~ 20 steps

◆ BLUE GAIN : Adjust B gain value ► 0 ~ 20 steps

◆ CHROMA : Adjust CHROMA gain value ► 0 ~ 20 steps

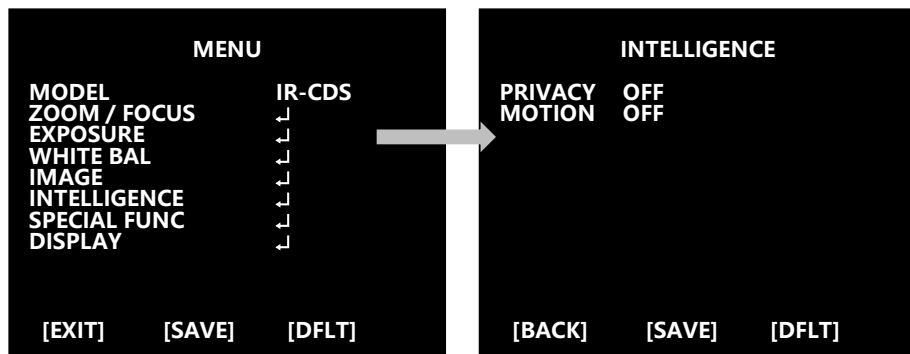
IMAGE



- ◆ **HLC** : Set High Light Compensation.
When camera is shooting extremely bright light source, camera masks the area to prevent saturation on the monitor.
 - ▷ **MODE** : OFF / ON / NIGHT
 - ▷ **LEVEL** : 0 ~ 20 steps
 - ▷ **COLOR** : 0 ~ 13 steps
- ◆ **DNR** : Set the use of Digital Noise Reduction
 - ▶ OFF / LOW / MIDDLE / HIGH / AUTO
- ◆ **MIRROR** : Set mirror or flip image mode
 - ▶ OFF / H / V / H&V
 - ▷ **H** : You can mirror the picture horizontally on the monitor
 - ▷ **V** : You can flip the picture vertically on the monitor
 - ▷ **H&V** : You can execute mirror and flip at the same time.
- ◆ **SHARPNESS** : Adjust sharpness level
 - ▶ 0 ~ 10 steps

- ◆ ACE : Set Adaptive Contrast Enhancement function
 - ▶ OFF / LOW / MIDDLE / HIGH
- ◆ DEFOG : Set Defog function
 - ▶ OFF / ON↵
 - ▷ MODE : AUTO / MANUAL
 - ▷ LEVEL : LOW / MIDDLE / HIGH
- ※ You can not use DEFOG and ACE at the same time
(When ACE On, DEFOG will be Off. Also when DEFOG is On, ACE will be Off)
- ◆ Freeze : This function stops video
 - ▶ OFF / ON
- ◆ GAMMA : Select Gamma
 - ▶ 0.45 / 0.55 / 0.65 / 0.75
- ◆ E.ZOOM
 - ▶ OFF / ON↵
 - ▷ LIMIT : Max x2 ~ x19, x21, x23, x25, x28, x32
 - ▷ POSITION : Select maximum digital zoom magnification.

INTELLIGENCE



◆ **PRIVACY** : You can hide some areas on the screen

▶ **OFF / ON**

- ▷ **MASK#** : Select a number of mask area (1 ~ 24)
- ▷ **MODE** : Enable or disable mask (OFF / ON)
- ▷ **POSITION** : Adjust the position of the mask
- ▷ **SIZE** : Adjust the size of the mask
- ▷ **COLOR** : Select mask color (0 ~ 13)
- ▷ **TRANS** : Select mask transparency level (0 ~ 3)

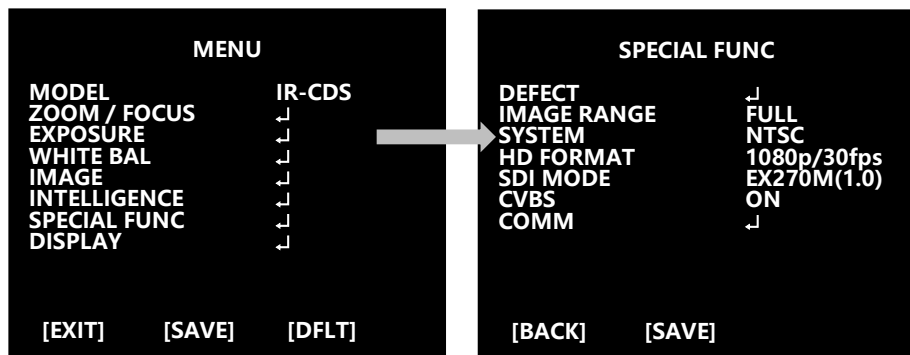
◆ **MOTION** : When there is movement on the screen, camera detects the motion.

▶ **OFF / ON**

- ▷ **AREA#** : You can configure up to 3 areas(1~3) of motion detection
- ▷ **MODE** : OFF / ON (Enable or disable motion detection)
- ▷ **SENSITIVITY** : Set the sensitivity of motion detection (0 ~ 20 steps)
The lower number, the higher sensitivity.
- ▷ **POSITION** : Adjust the position of motion detection area
- ▷ **SIZE** : Adjust the size of motion detection area
- ▷ **INTERVAL TIME** : Set the detection time interval (0 ~ 255sec)
- ▷ **DWELL TIME** : Set the motion alarm duration time (0 ~ 255sec)

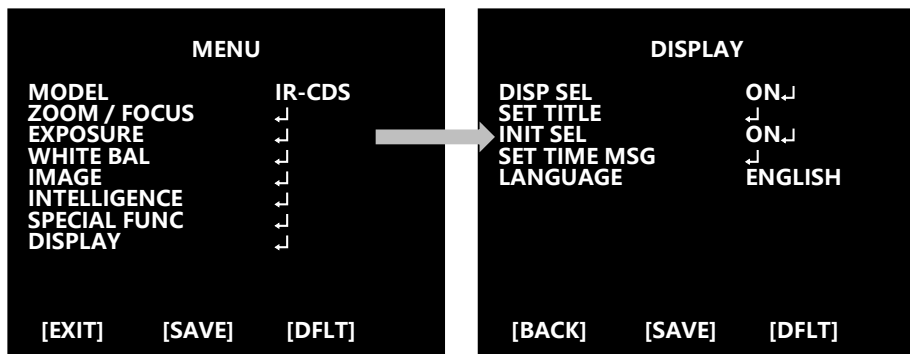
SPECIAL FUNCTION

SPECIAL FUNC



- ◆ DEFECT : Compensates bad pixels on image sensor
- ◆ IMAGE RANGE : Set the bit range of video image
(Full : 100%, Compressed : 75%)
 - ▶ FULL, COMP, USER[Ⓐ]
 - ▷ LEVEL : Set the level of user mode (0 ~ 32)
- ◆ SYSTEM : Select NTSC(30/60fps) or PAL(25/50fps).
- ◆ HD FORMAT : Set digital video output mode
(1080p 60(50)/30(25)fps, 1080i 60(50)fps, 720p 60(50)/30(25)fps)
- ◆ SDI MODE : Select SDI output mode
 - ▶ OFF / HD-SDI / EX-SDI 135M(v2.0) / EX-SDI 135M+(v2.1) / EX-SDI 270M(v1.0)
- ◆ CVBS : Select analog output mode
 - ▶ OFF / ON
- ◆ COMM : Set camera ID, baud rate and protocol
 - ▷ ID : Set camera ID
 - ▶ 1 ~ 255
 - ▷ BAUD RATE : Set the speed of serial communication
 - ▶ 2400 / 4800 / 9600 / 19200 / 38400 / 57600 / 115200bps
 - ▷ PROTOCOL : Select a protocol
 - ▶ VISCA / PELCO-D / PELCO-P / UPDATE

DISPLAY



- ◆ **DISP SEL** : Select items to display on the screen
 - ▶ OFF / ON↵
 - ▷ ID : OFF / ON ▷ TITLE : OFF / ON
 - ▷ ZOOM RATIO : OFF / ON
 - ▷ SYSTEM MSG : OFF / ON
(MD Alarm and Wait message)
- ◆ **SET TITLE** : Configure camera title
(Text edit - max 40 characters are allowed)
- ◆ **INIT SEL** : Select messages to display on the initial screen page
 - ▶ OFF / ON↵
 - ▷ ID : OFF / ON ▷ BAUDRATE : OFF / ON
 - ▷ PROTOCOL : OFF / ON ▷ VERSION : OFF / ON
 - ▷ INIT MSG : OFF / ON
- ◆ **SET INIT MSG** : modify initial message.
(Text edit - max 40 characters are allowed)
- ◆ **LANGUAGE** : Select a language to display
 - ▶ English / Simplified Chinese / Traditional Chinese / Japanese
 - ※ Character Table of Text edit Mode

```

A B C D E F G H I J K L M N O P Q R S T
U V W X Y Z a b c d e f g h i j k l m n
o p q r s t u v w x y z , . ( ) { } [ ]
0 1 2 3 4 5 6 7 8 9 * + - / = ~ ! ? " '
    
```

SPECIFICATIONS

Image Sensor	1/2" Sony Starvis CMOS Sensor
Total Pixels	1,952(H) x 1,113(V) = 2.178M pixels
Active pixels	1,937(H) x 1,097(V) = 2.12M pixels
Lens	Optical 3x, Digital 32x Zoom f = 3.6mm ~ 10mm, F1.5 (wide) ~ F2.8 (tele)
FOV	Horizontal : 100°~43°, Vertical : 55°~25°
IR-LED	High Power IR-LED 4pcs (Up to 50m)
Digital Zoom	2x ~ 32x
Resolution	Digital : 1080p 60(50)/30(25)fps, 1080i 60(50)fps, 720p 60(50)/30(25)fps Analog : 700TVL
Min. illumination	Color(1/30s) : 0.01 lux, BW(1/30s) : 0.002 lux Color DSS(1/1s) : 0.001 lux, BW DSS(1/1s) : 0.0002 lux
Video Output	HD : HD-SDI ^{Note1} , EX-SDI Analog SD : CVBS (※Test purpose only)
S/N Ratio	more than 50dB (AGC off)
Comm. Baudrate	2400 / 4800 / 9600 / 19200 / 38400 / 57600 / 115200
Focusing Mode	Auto / Manual
Shutter Speed	1/30(25) ~ 1/60,000 sec
WDR/BLC	OFF / WDR / BLC
White Balance	Auto / One Push / Manual / Indoor / Outdoor / Auto-Ext
Power Source	DC12V±10%
Power Consumption	DC 12V : MAX 850mA
Storage Temperature	-20℃ ~ +60℃ (Humidity : 0%RH ~ 90%RH)
Operating Temperature	-10℃ ~ +50℃ (Humidity : 0%RH ~ 90%RH)
Weight	1,088g

* Note 1 : HD-SDI signals may not exactly match the standard.

* Note 2 : Design and specifications are subject to change without notice.

P/N :
PRINTED IN KOREA

Distributed by