

Model DBHS Series

S- Beam Load Cell (50kg ~ 1t)

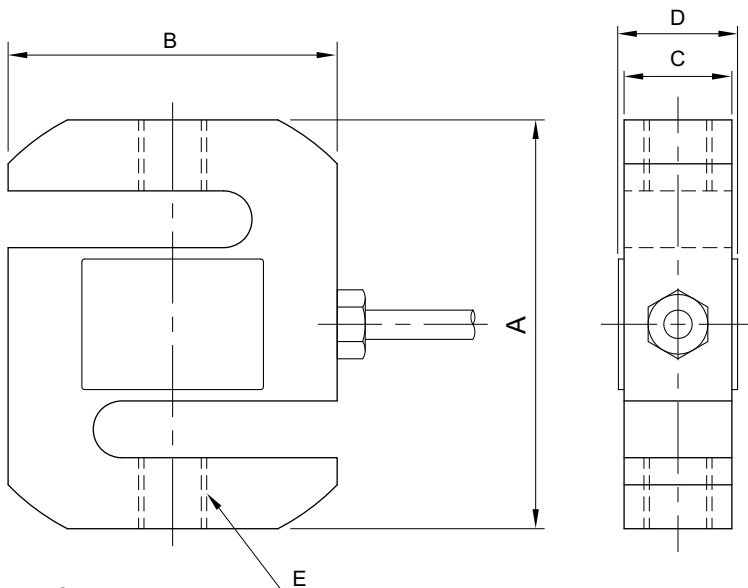
The DBHS S-beam load cell is designed for industrial scale conversion and a variety of process applications.

- Stainless steel construction for high accuracy.
- Fully sealed to IP67



SPECIFICATIONS

MODEL	DBHS
Rated capacity (R.C.)	50, 100, 200, 500kg, 1t
Rated output(R.O.)	2.0mV/V ± 0.5%
Non-linearity	≤0.03% R.O.
Hysteresis	≤0.03% R.O.
Non-repeatability	≤0.02% R.O.
Creep error	≤0.03% in 20min.
Zero balance	≤1% R.O.
Compensated temperature range	-10 ~ 70°C
Operating temperature range	-20 ~ 80°C
Temp. effect on rated output	≤0.03% LOAD/10°C
Temp. effect on zero balance	≤0.03% R.O./10°C
Terminal input resistance	350 Ohms ±3.5 Ohms
Terminal output resistance	350 Ohms ±5 Ohms
Insulation resistance (Min.)	2000 MOhms at 50V DC
Excitation voltage	3~12V(Recommended), 15V(Max.)
Electrical connection	∅5mmx3m(22AWG x 4Core Shielded)
Protection class	meets IP 67
Safe overload	150% R.C
Ultimate overload	300% R.C
Material	Stainless steel(17-4PH)



ORDERING INFORMATION	
DBHS - 200	
MODEL	CAPACITY
DBHS	50, 100, 200, 500kg , 1ton

WIRING INFORMATION	
	RED : EXC. (+)
	GREEN : SIG. (+)
	WHITE : EXC. (-)
	BLUE : SIG. (-)
	BARE : GND.

Dimension-mm

Rated Capacity	A	B	C	D	E	Weight(kg)
50,100kg (490.3N, 980.7N)	63.5	50.8	12.7	19	M6x1P	0.40
200, 500kg (1.961, 4.903kN)	72.0	58.0	19.0	25	M12x1.75P	0.55
1t (9.807kN)	72.0	58.0	25.4	27	M12x1.75P	0.73

* Specifications are subject to change without notice

APR, 2018