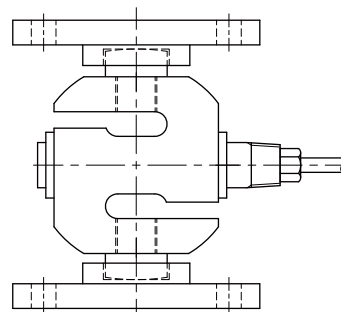
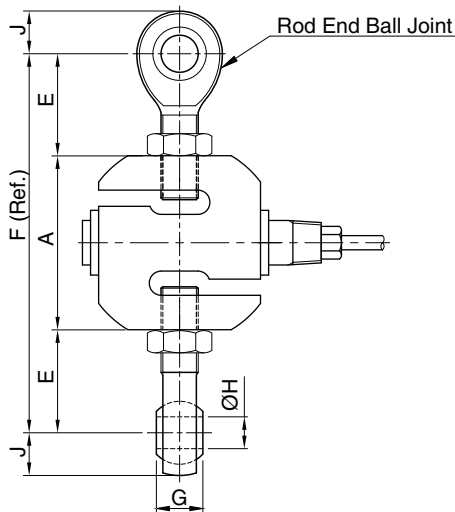
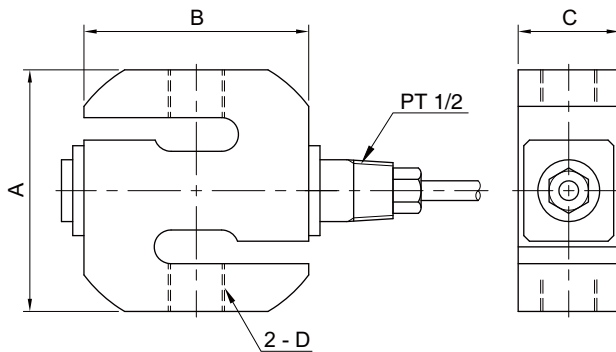


Model DBXE Series

Flameproof type
S-Beam Load Cell (1t ~ 3t)

- KOSHA Approved (Ex d IIB T4)
- 17-4PH stainless steel construction
- high accuracy



Mounting Kit
(BMDX)

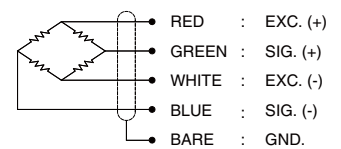
SPECIFICATIONS

| MODEL | DBXE |
|-------------------------------|---------------------------------|
| Rated capacity (R.C.) | 1, 2, 3t |
| Rated output (R.O.) | 1.5mV/V ± 0.005mV/V |
| Non-linearity | ≤ 0.05% R.O. |
| Hysteresis | ≤ 0.05% R.O. |
| Non-repeatability | ≤ 0.03% R.O. |
| Creep error | ≤ 0.03% in 20min. |
| Zero balance | ≤ 1% R.O. |
| Compensated temperature range | -10 ~ 70°C |
| Operating temperature range | -20 ~ 80°C |
| Temp. effect on rated output | ≤ 0.03% LOAD/10°C |
| Temp. effect on zero balance | ≤ 0.03% R.O./10°C |
| Terminal input resistance | 400 Ohms ± 10 Ohms |
| Terminal output resistance | 350 Ohms ± 10 Ohms |
| Insulation resistance (Min.) | 2000 MOhms at 50V DC |
| Excitation voltage | 3~12V(Recommended), 15V(Max.) |
| Electrical connection | ∅7mmx6m(22AWG x 4Core Shielded) |
| Protection class | IP 68 |
| Safe overload | 150% R.C |
| Ultimate overload | 300% R.C |

ORDERING INFORMATION

| | | |
|---------------|---|------------------------|
| DBXE | - | 3T |
| MODEL DBXE | | CAPACITY 1, 2, 3ton |

WIRING INFORMATION



FLAMEPROOF
Ex d IIB T4 / KOSHA

Dimension-mm

| Rated Capacity | A | B | C | D | E | F | G | H | J | Rod End Ball Joint | Weight(kg) |
|----------------|-----|----|----|-----------|----|-----|----|----|----|--------------------|------------|
| 1t (9.807kN) | 80 | 72 | 34 | M12x1.75P | 41 | 162 | 16 | 12 | 16 | SRDB-2 | 1.6 |
| 2t (19.61kN) | 90 | 80 | 36 | M20x1.5P | 55 | 200 | 25 | 20 | 26 | SRDB-3 | 2.0 |
| 3t (29.42kN) | 106 | 90 | 38 | M24x2P | 55 | 216 | 28 | 22 | 32 | SRDB-4 | 2.6 |

* Specifications are subject to change without notice

APR, 2018