

Model CDES Series

Tension & Compression
Low Profile Load Cell (50kg ~ 2t)

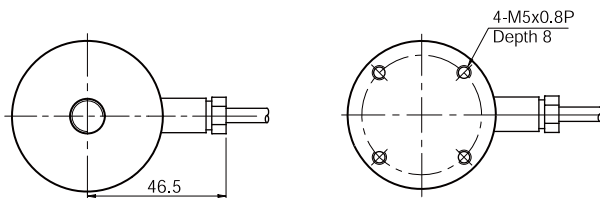


The model CDES miniature type is designed for low profile tension and compression service. Its compact size makes the cell ideal for a wide range of applications including testing & weighing systems.

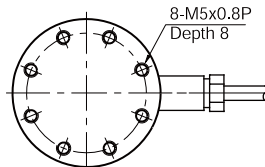
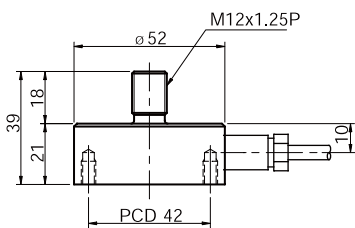
- 17-4PH Stainless steel construction
- Fully welded seal with stainless steel cover for hostile environment applications.
- Compact size with low profile.

SPECIFICATIONS

MODEL	CDES
Rated capacity (R.C.)	50, 100, 200, 500, 1000, 2000kg
Rated output(R.O.)	2.0mV/V ± 0.25%
Non-linearity	≤0.1% R.O.
Hysteresis	≤0.1% R.O.
Non-repeatability	≤0.1% R.O.
Creep error	≤0.03% in 20min.
Zero balance	≤1% R.O.
Compensated temperature range	-10 ~ 70°C
Operating temperature range	-20 ~ 80°C
Temp. effect on rated output	≤0.05% LOAD/10°C
Temp. effect on zero balance	≤0.05% R.O./10°C
Terminal input resistance	700 Ohms ± 10 Ohms
Terminal output resistance	700 Ohms ± 10 Ohms
Insulation resistance (Min.)	2000 MOhms at 50V DC
Excitation voltage	3~12V(Recommended), 15V(Max.)
Electrical connection	Ø5mmx3m(22AWG x 4Core Shielded)
Protection class	meets IP 67
Safe overload	150% R.C
Ultimate overload	300% R.C

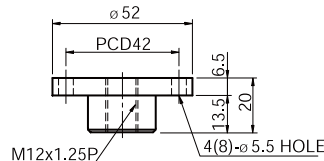
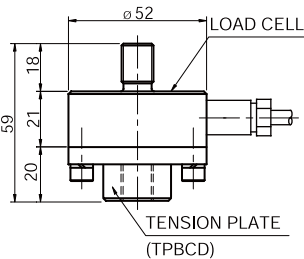


Bottom View
(50 ~1000kg)

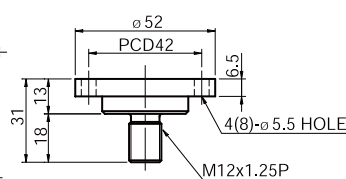
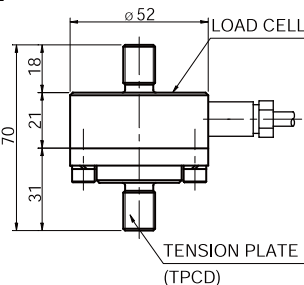


Bottom View
(2t)

Tension Plate : TPBCD



Tension Plate : TPCD

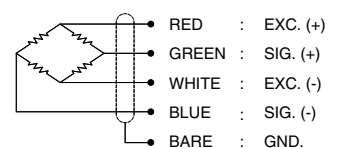


ORDERING INFORMATION

Load Cell	CDES - 2T	
	MODEL	CAPACITY
	CDES	50, 100, 200, 500kg, 1, 2ton

Tension Plate	TPCD - 2T	
	MODEL	CAPACITY
	TPCD TPBCD	50, 100, 200, 500kg, 1, 2ton

WIRING INFORMATION



* Specifications are subject to change without notice

APR, 2018