

Model OBBL Series

Bending Beam Type Load Cell
(20kg ~ 200kg)

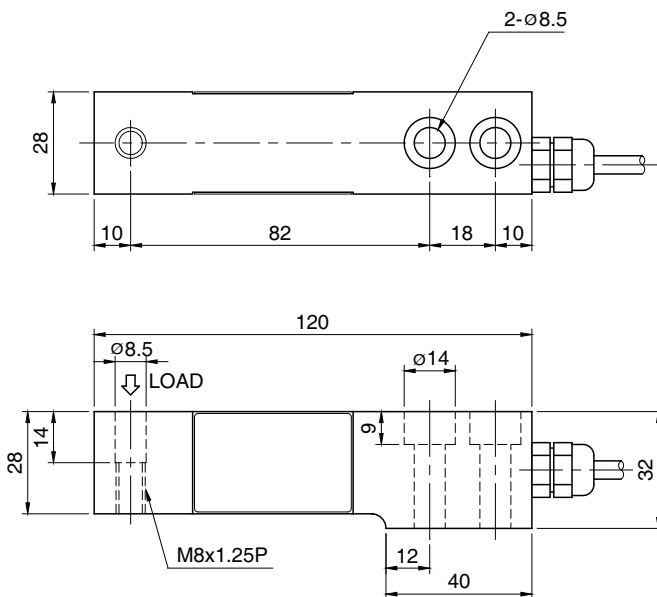
The OBBL series single ended bending beam load cell is designed for tension or compression loading applications.

- Aluminum alloy
- High accuracy & Low cost



SPECIFICATIONS

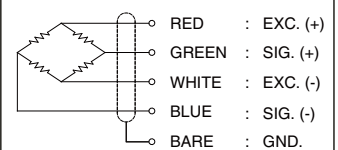
| MODEL | OBBL |
|-------------------------------|---------------------------------|
| Rated capacity (R.C.) | 20, 50, 100, 200kg |
| Rated output(R.O.) | 2.0mV/V ± 0.25% |
| Non-linearity | ≤0.03% R.O. |
| Hysteresis | ≤0.02% R.O. |
| Non-repeatability | ≤0.02% R.O. |
| Creep error | ≤0.03% in 20min. |
| Zero balance | ≤1% R.O. |
| Compensated temperature range | -10 ~ 70°C |
| Operating temperature range | -20 ~ 80°C |
| Temp. effect on rated output | ≤0.03% LOAD/10°C |
| Temp. effect on zero balance | ≤0.03% R.O./10°C |
| Terminal input resistance | 430 Ohms ± 20 Ohms |
| Terminal output resistance | 350 Ohms ± 5 Ohms |
| Insulation resistance (Min.) | 2000 MOhms at 50V DC |
| Excitation voltage | 3~12V(Recommended), 15V(Max.) |
| Electrical connection | ø5mmx3m(22AWG x 4Core Shielded) |
| Protection class | meets IP 65 |
| Safe overload | 150% R.C |
| Ultimate overload | 300% R.C |



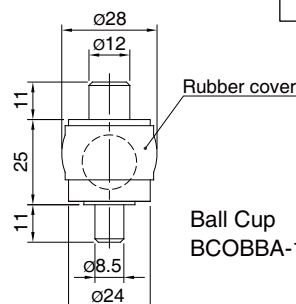
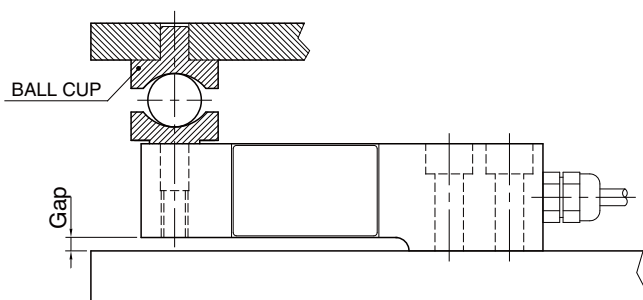
ORDERING INFORMATION

OBBL - 50
 MODEL CAPACITY
 OBBL 20, 50, 100, 200kg

WIRING INFORMATION



Installation



* Specifications are subject to change without notice

APR, 2018