

Single Point

BCH

Rated Capacity | 500(kg) / 1, 1.5, 2, 2.5(t)

Material | Aluminum

사용용도 | Large Bench, Platform

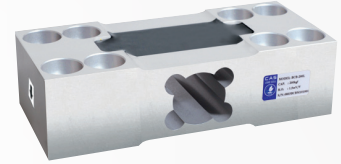


BCB

Rated Capacity | 200, 300, 350, 400, 500, 600, 700, 750, 800, 1000(kg)

Material | Aluminum

사용용도 | Large Bench, Platform



Bending & Shear Beam

BS

Rated Capacity | 250, 500(kg) / 1, 2, 3, 5, 10(t)

Material | Nickel Plated Steel

사용용도 | Platform, Tank



BSA

Rated Capacity | 250, 500(kg) / 1, 2, 3, 5(t)

Material | Nickel Plated Steel

사용용도 | Hopper, Tank, Platform



BSB

Rated Capacity | 250, 500(kg) / 1, 2, 3, 5, 10(t)

Material | Nickel Plated Steel

사용용도 | Hopper, Tank, Platform



BSS

Rated Capacity | 500(kg) / 1, 2, 3, 5(t)

Material | Nickel Plated Steel

사용용도 | Hopper, Tank, Platform

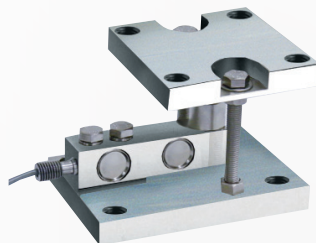


MEK-A/B/S

Rated Capacity | 500(kg) / 1, 2, 3, 5(t)

Material | Nickel Plated Steel

사용용도 | Hopper, Tank



HBS

Rated Capacity | 10, 20, 50, 100, 200, 500(kg) / 1, 2(t)

Material | Stainless Steel

사용용도 | Hopper, Tank, Platform

